



ADDOWN REALTY

— Connecting You To Your Perfect Property —



EARTHY LIVING

This 3 BHK apartment property integrates natural and convenient living, surrounded by essential facilities and green landscapes.

# STUPENDOUS ELEVATION



A well-addressed holistic life amidst greenery, buildings that fulfill dreams of abode of luxury and convenience. Built on an elevation accentuating views and life.

# CONVIVIAL EVENINGS


Choose abode offerings spaces for celebrations, bonding, and socializing with views that please the soul and guests. Sufficient lighting and ventilation make for pleasant memories.





# ENDEARING GALLERIES

Balconies for every apartment enable a salubrious lifestyle with views stretching as far as the eyes go. Commodious balconies provide space for balconies to bloom.



# AMENITIES



DROP OFF  
ZONE



WATERFALL WALL  
WITH LILY POND



MULTIPURPOSE  
HALL



GYMNASIUM



COMMON  
PLOT



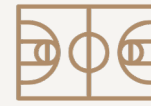
CLUB  
HOUSE



LIBRARY &  
READING LOUNGE



INDOOR  
GAMES



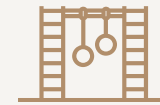
MULTIPURPOSE  
COURT



COVERED  
WALKWAY



BOX  
CRICKET



CHILDREN  
PLAY AREA



BANQUET  
HALL



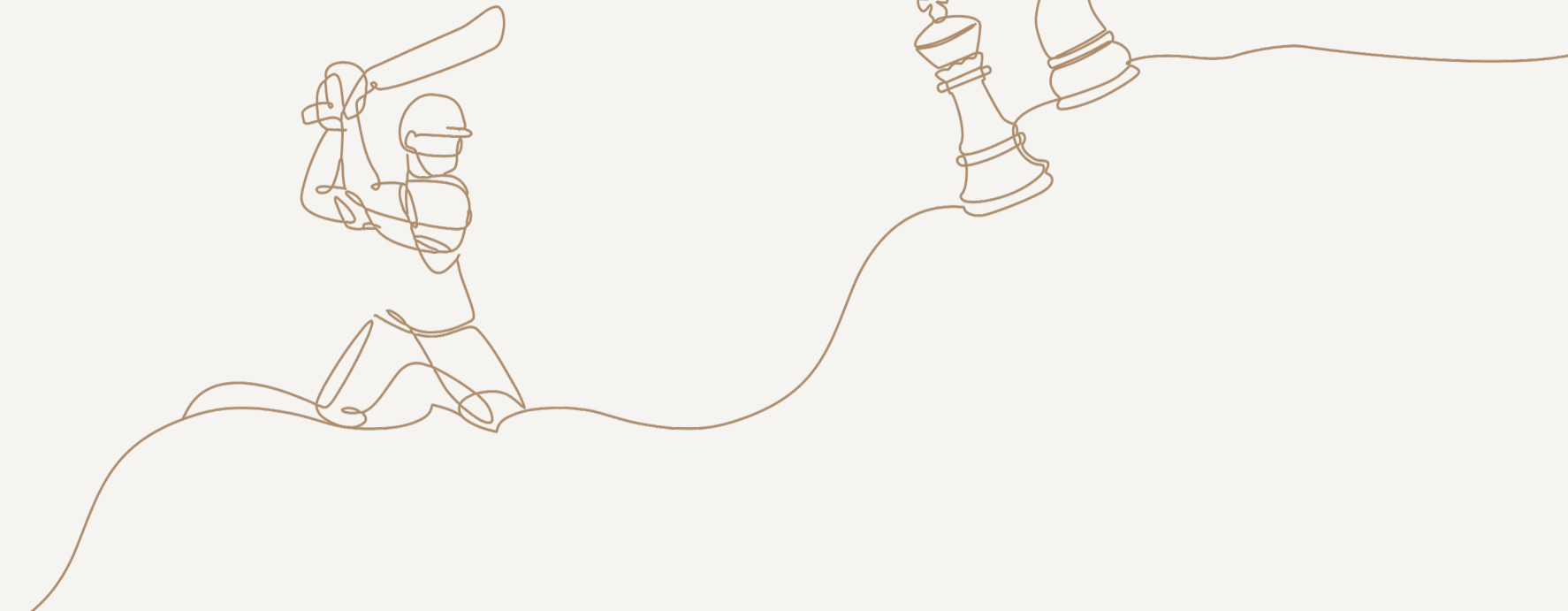
TODDLER  
PLAY AREA



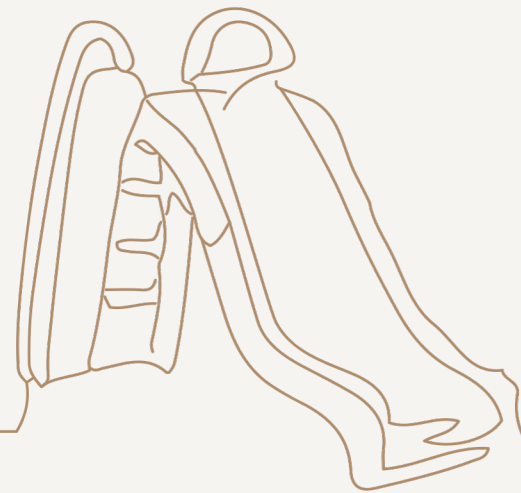
HOME  
THEATER



WOODEN DECK  
SEMI OPEN



# INDULGENT AMENITIES

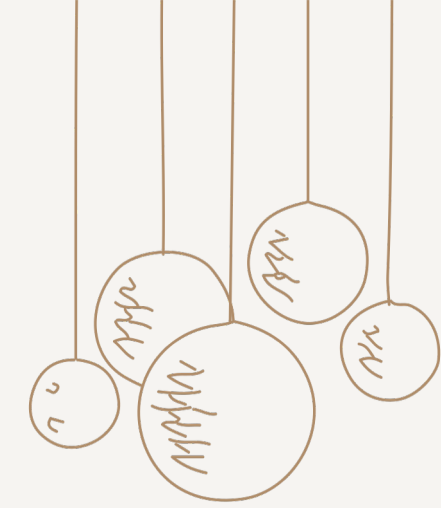


Amenities like Children's Play Area and Gymnasium keep the adults and children engaged and energized throughout the day with the convenience of in-house amenities.

# LUSH LANDSCAPES

Rich with greenery and brimming with life, the spaces for socializing get everybody together, forgoing formalities and bringing friends and family closer than ever.





# GENEROUS FOYERS

Spacious and grand foyer spaces make entrances an elegant affair making way for an immaculate welcome. Expansive high-ceiling foyers enhance the living experience with their aesthetics.



# GROUND FLOOR



- |                      |                       |                   |                           |                              |                        |
|----------------------|-----------------------|-------------------|---------------------------|------------------------------|------------------------|
| 1. HOME THEATRE      | 4. WATER FEATURE WALL | 7. ENTRANCE FOYER | 10. STORE                 | 13. CELEBRATION LAWN         | 16. BANQUET HALL       |
| 2. MULTIPURPOSE HALL | 5. CHILDREN PLAY AREA | 8. METER ROOM     | 11. WOODEN DECK SEMI OPEN | 14. LIBRARY & READING LOUNGE | 17. TODDLER AREA       |
| 3. COVERED WALKWAY   | 6. GYM                | 9. ADMIN OFFICE   | 12. CLUB HOUSE            | 15. INDOOR GAMES             | 18. MULTIPURPOSE COURT |
|                      |                       |                   |                           |                              | 19. BOX CRICKET        |

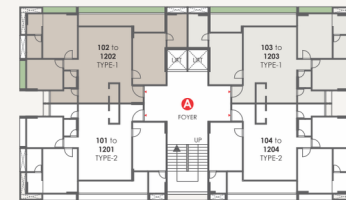
# TYPICAL FLOOR

(1<sup>ST</sup> TO 12<sup>TH</sup> FLOOR)



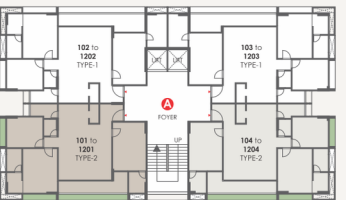
# TYPE - 1

(BLOCK - A & B)  
(3 BHK)



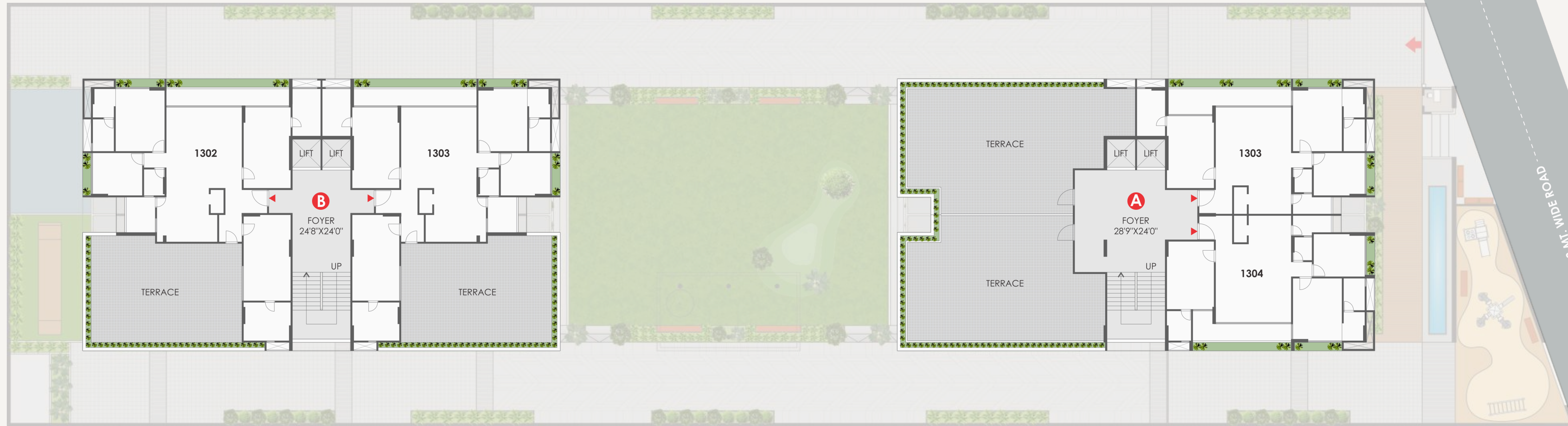
# TYPE - 2

(BLOCK - A & B)  
(3 BHK)



# PENTHOUSE

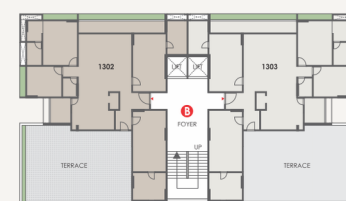
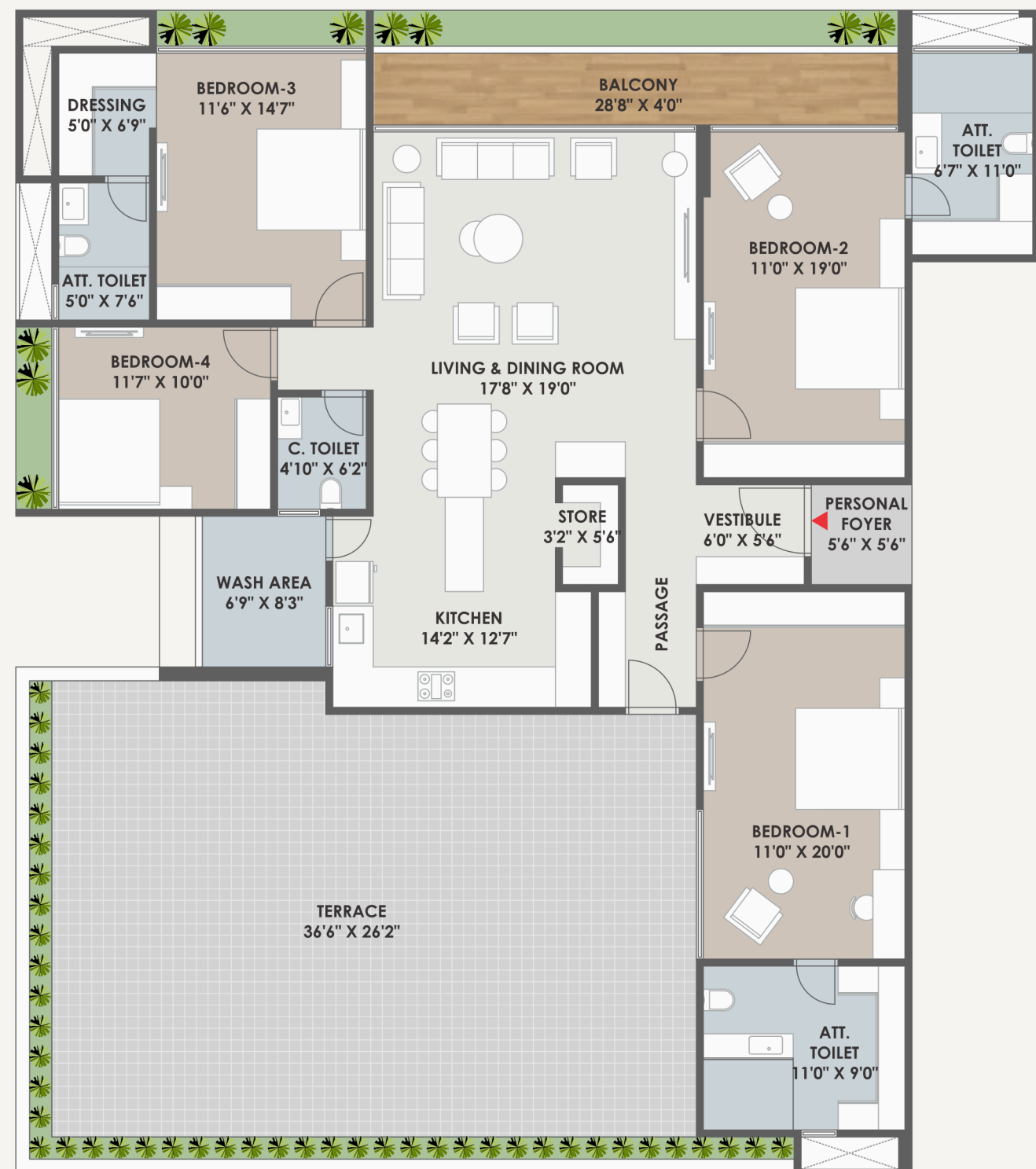
(13<sup>TH</sup> FLOOR)



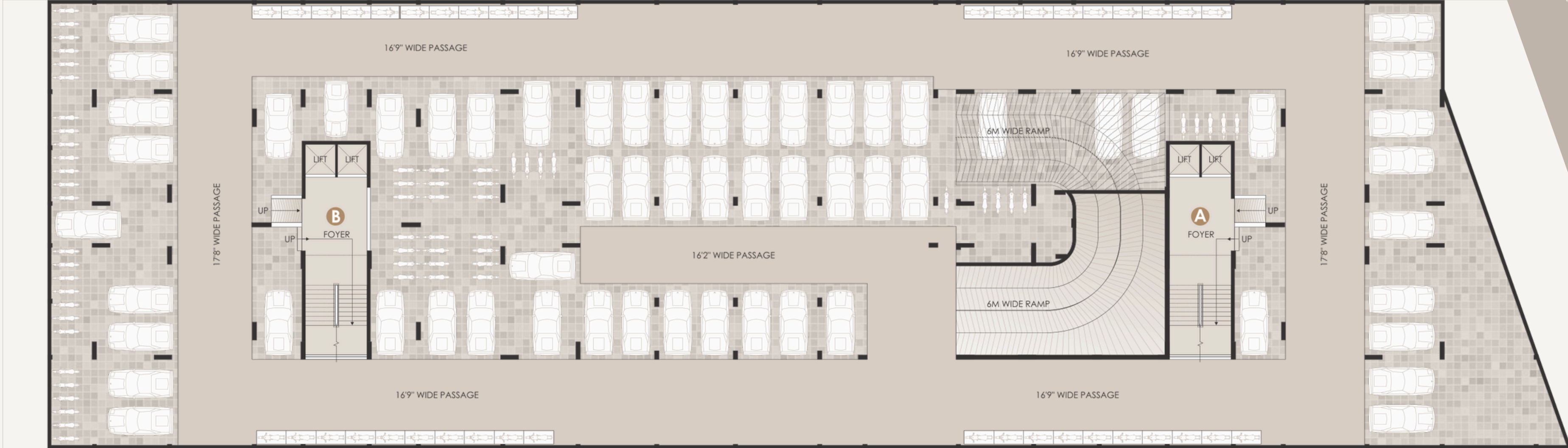
18 MT. WIDE ROAD

# PENTHOUSE

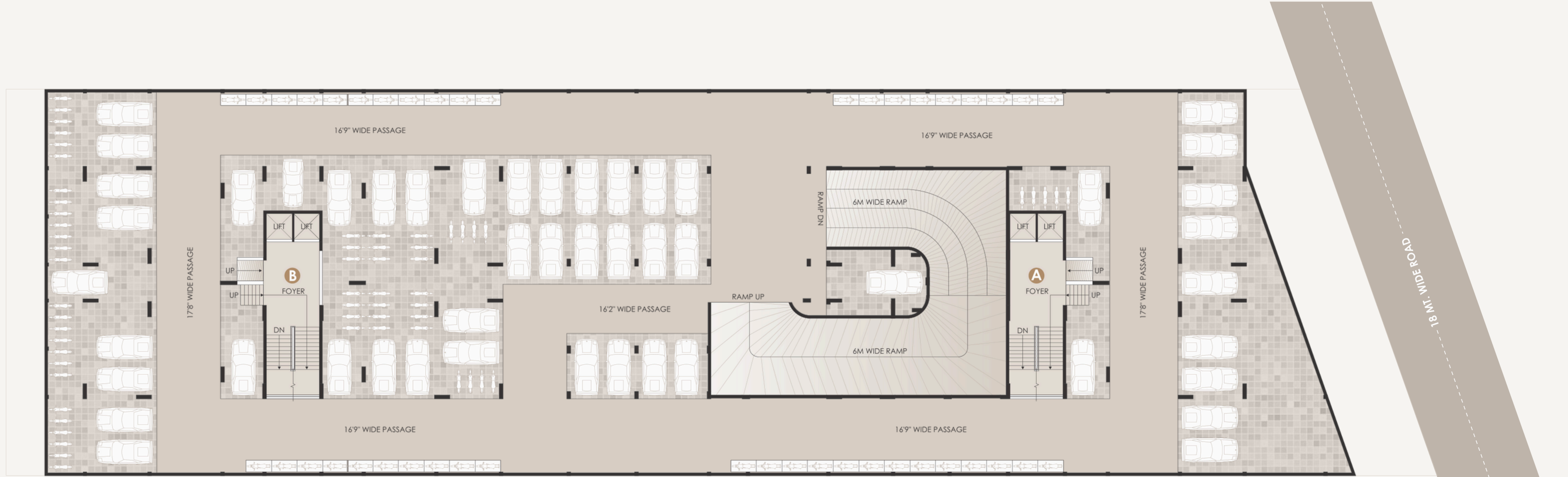
(BLOCK - B)  
(4 BHK)



# BASEMENT - 1



# BASEMENT - 2



# SPECIFICATIONS

## STRUCTURE

- Earthquake resistant RCC frame structure.

## FLOORING

- Good quality vitrified tiles in entire apartment.
- China mosaic for heat reflection & water proofing treatment in terrace.

## KITCHEN

- Granite top platform with S.S. sink.
- Designer glazed tiles dado up to lintel level.

## WALL FINISH

- Internal single coat mala plaster with putty finish.
- External double coat sand face plaster or texture with acrylic paint.

## ELECTRIFICATION

- Concealed copper wiring with modular switches &
- Sufficient number of points with MCB distribution panel.
- AC & Geyser points.

## DOORS & WINDOWS

- Decorative main door with wooden frame.
- All door frames are wooden & good quality fittings.
- Anodized or powder coated aluminum sliding window with stone seal.

## TOILET/PLUMBING

- Designer glazed tiles up to lintel level.
- Premium quality bath fittings & sanitary wares.



## Notes

- Changes in elevation shall not be allowed to be done by members of society. All the government & semi-government charges like stamp duty, GST and any other tax by state or central government shall be borne by members. Legal documentation charges and Advance maintenance shall be borne by the members separately.
- All the rights reserved by a developer to make any changes in the layout plan, exterior elevation, dimension and other details there is to comply with statutory regulation shall be binding to all the members. Any additional liabilities due to changes in the by laws shall be borne by members. This brochure is just for an easy presentation of the project and should not be treated as a legal document. Subject to Ahmedabad jurisdiction.
- All pictures of amenities are for imagination only.