



ADDOWN REALTY  
— Connecting You To Your Perfect Property —

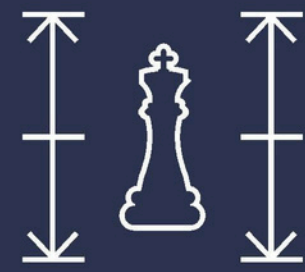
“  
Dedicated entirely to  
*Luxurious* living  
”

## ELYSIAN ELEVATION

A Premium Project with several amenities and features that makes every day a delight and peacefulness.



# AMENITIES



## DOUBLE STOREY CLUB HOUSE

Our double storey clubhouse, which can be utilized for socializing and celebrating with friends and family, doubles the enjoyment.



## GYM

A gym means you have access to tons of equipment, allowing you to keep your routine fresh and exciting.



## STUNNING MULTIPURPOSE HALL & THEATER SCREEN WITH PROJECTOR

A beautiful multipurpose space that can accommodate all of your needs.  
Whether you want to mark a happy moment or a large celebration,  
we have everything you need.



# AMENITIES



## PARTY FUNCTION AREA ON TERRACE

Our stunning terrace may be your new destination for all of your special occasions. They are nicely planted areas with artificial lawn.



## EACH FLAT BALCONY FACING GARDEN VIEW

Common plot, which match the rich scenery of Divya Heights, will increase your home's mobility.



## FIVE LIFTS AT EACH BLOCK

Each block has 4 Personal lifts and 1 Service lift.  
Enjoy a more opulent and liberated lifestyle with more space and possibilities.



## GROUND FLOOR INDOOR PLAY AREA

Play mind-refreshing games in the evenings. This adult and child-friendly indoor play area helps you bond better with your family and fill your time with entertainment, health, and happiness.



# AMENITIES



## EACH FLAT PERSONAL FOYER

The amount of room set aside for residents defines luxury. Every property has its own lobby, allowing residents to live in a spacious and opulent environment.



## BOX CRICKET PITCH

With our in-house cricket pitch, you can make your days healthier by filling them with laughter and friendly competition.



## AIRY LIVING ROOM

You start feeling the luxury the moment you open the door to your home and enter in lavish and spacious living room.

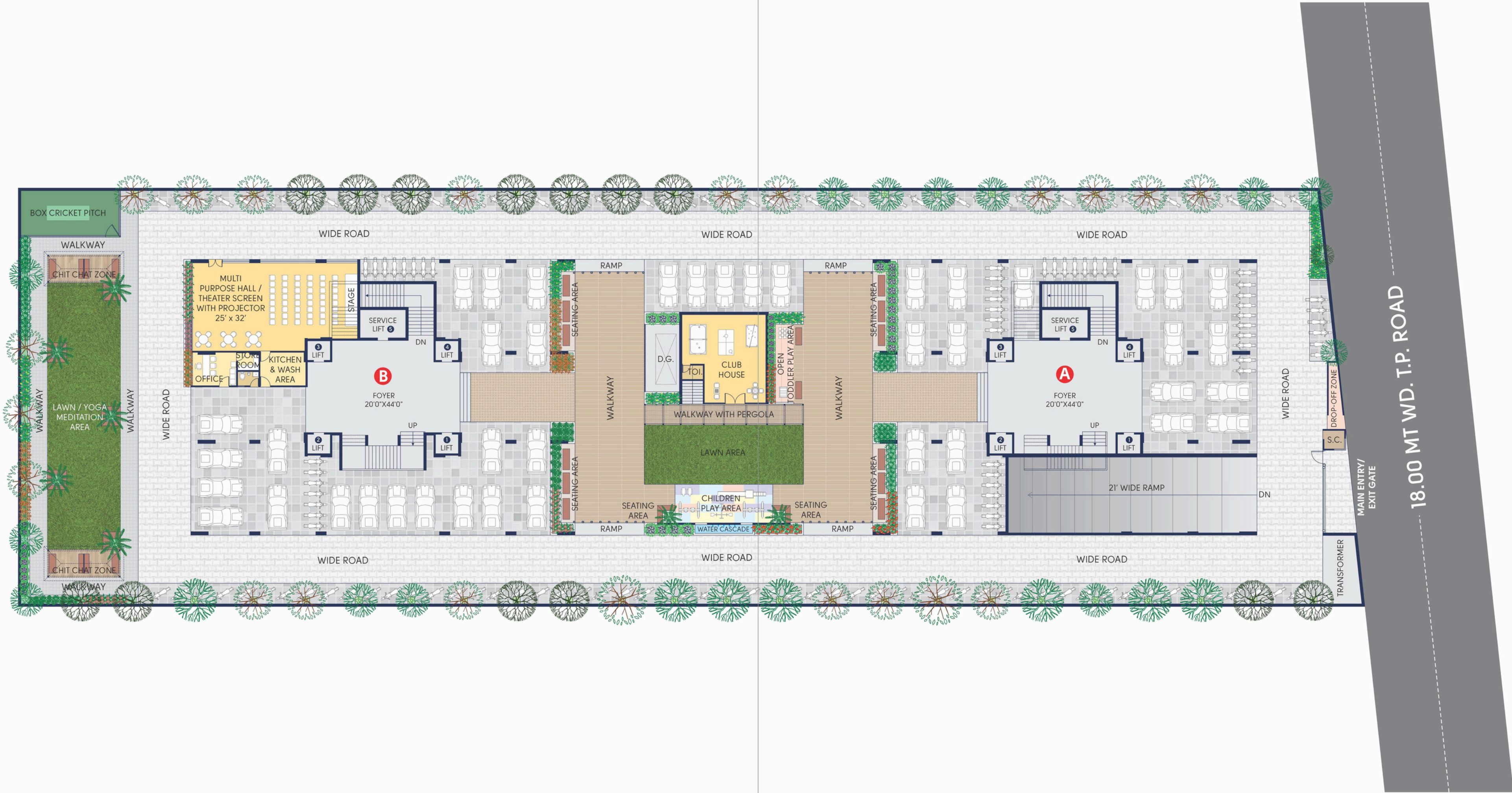


## PLEASANT ENTRANCE

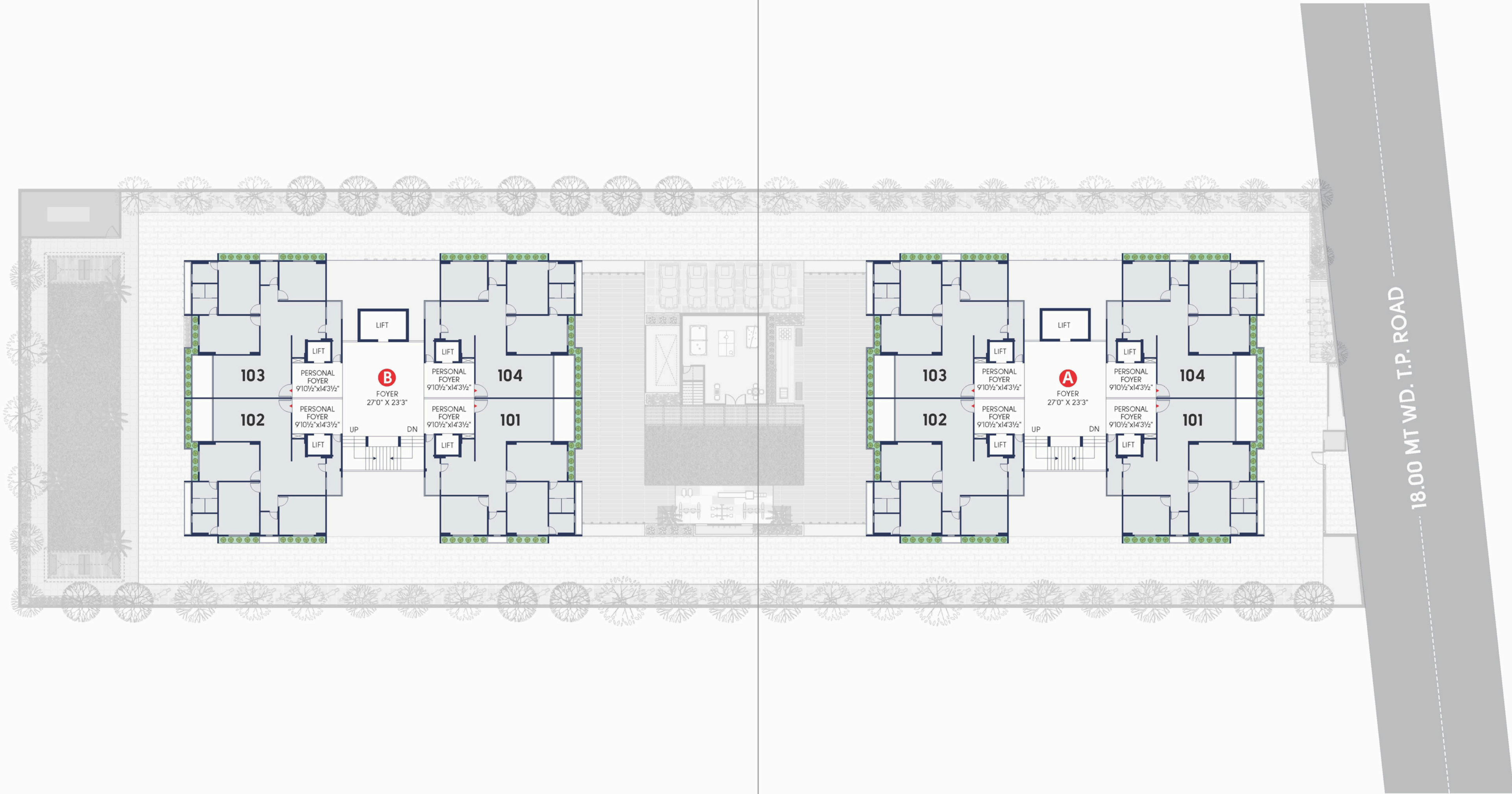
Every lifestyle begins with an entryway. Hence, we created a pleasing entry vista to depict the joyous and blessed existence that awaits one inside.



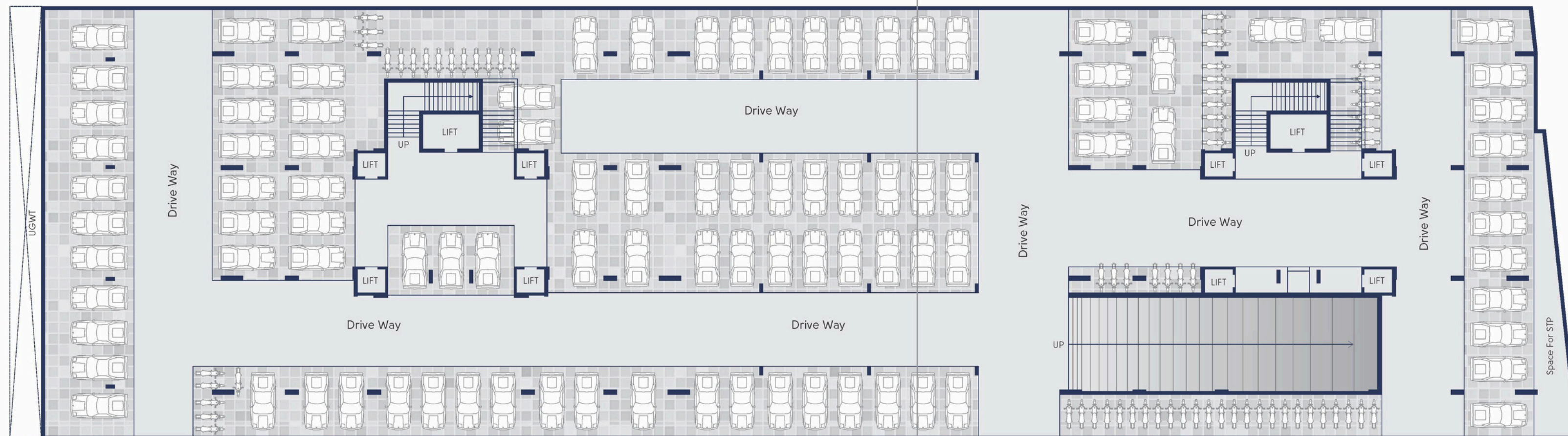
GROUND FLOOR



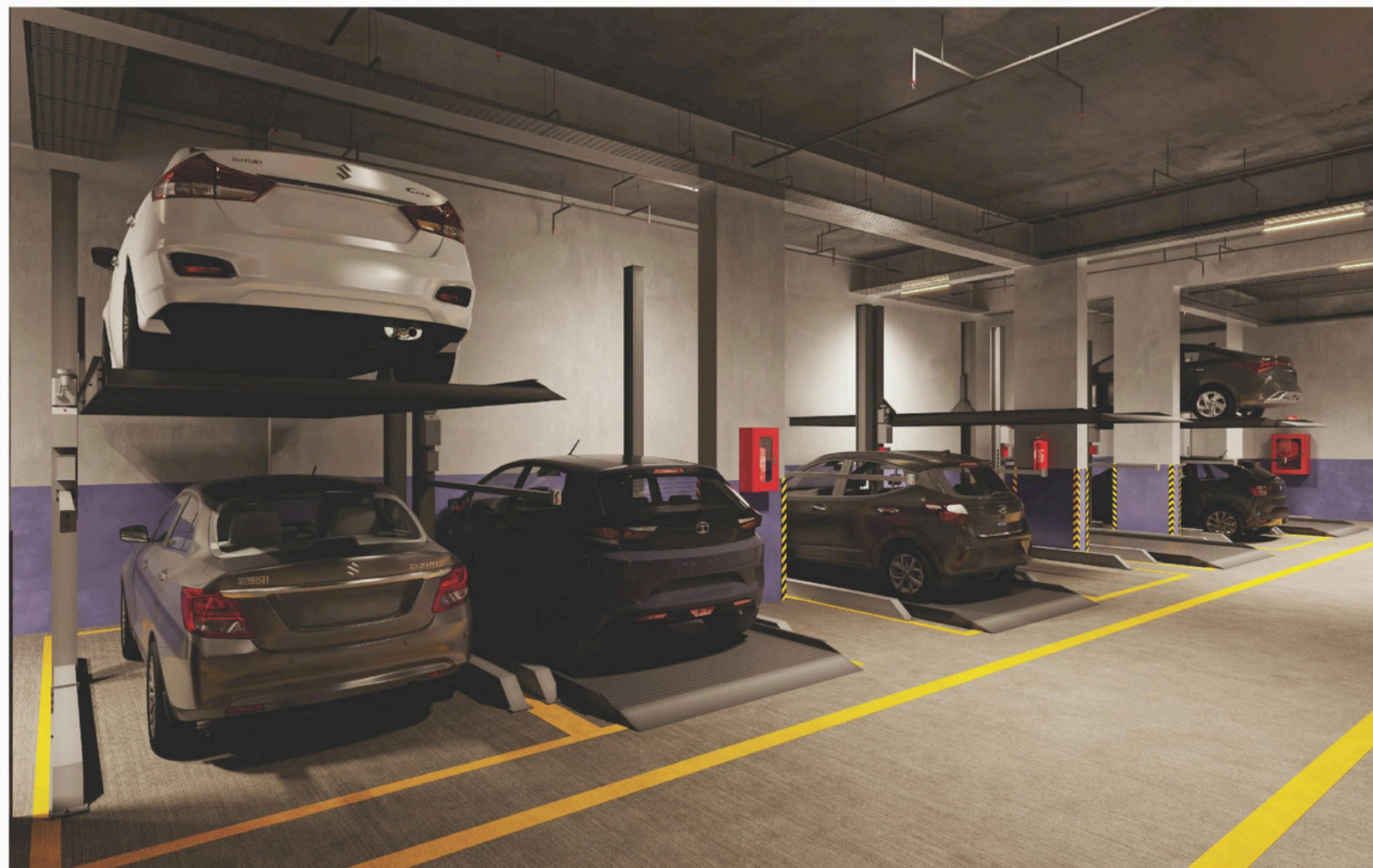
TYPICAL FLOOR



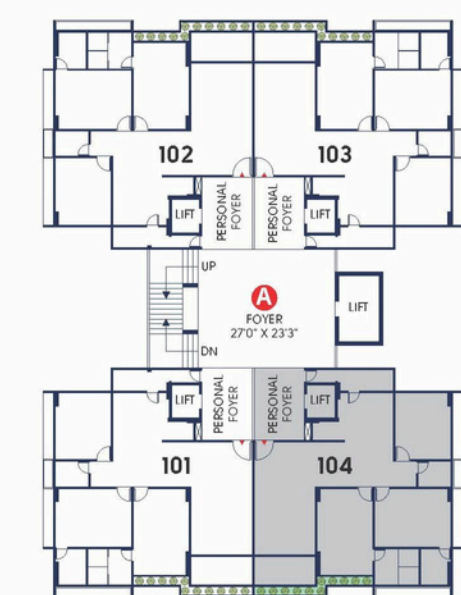
# BASEMENT FLOOR



18.00 MT WD. T.P. ROAD



**UNIT PLAN**  
BLOCK - A&B



## ARTISTIC ARCHITECTURE

Divya Heights projects a splendid exterior design and exemplary architecture. Inspired by the best, it is built on a model to provide sustainability and be efficient. A cheerful children's area and other zestful facilities.

