

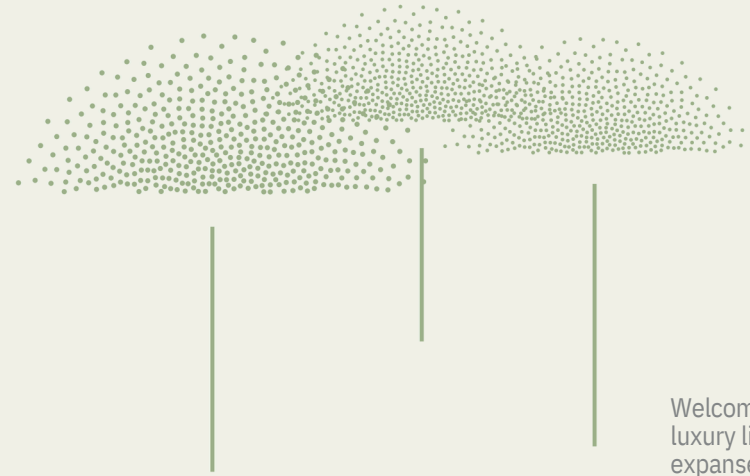


**ADDOWN REALTY**  
— Connecting You To Your Perfect Property —

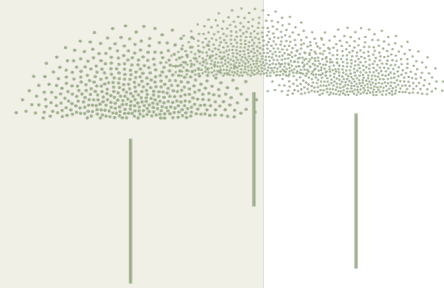


ENDLESS  
SKIES IN  
YOUR ARMS

WELCOME TO YOUR  
PRIVATE HAVEN  
AMIDST THE  
ENDLESS EXPANSE  
OF THE SKY



Welcome to SKYLINE, where the boundaries of luxury living are redefined amidst the endless expanse of the sky and the overlooking the golf course. Perched at the center of Shantigram, this exclusive high-end residence transcends traditional notions of opulence, offering discerning individuals a sanctuary of unparalleled grandeur and sophistication. With breathtaking views stretching as far as the eye can see, and a host of personalized services designed to elevate every aspect of daily life, SKYLINE epitomizes the pinnacle of golf living.



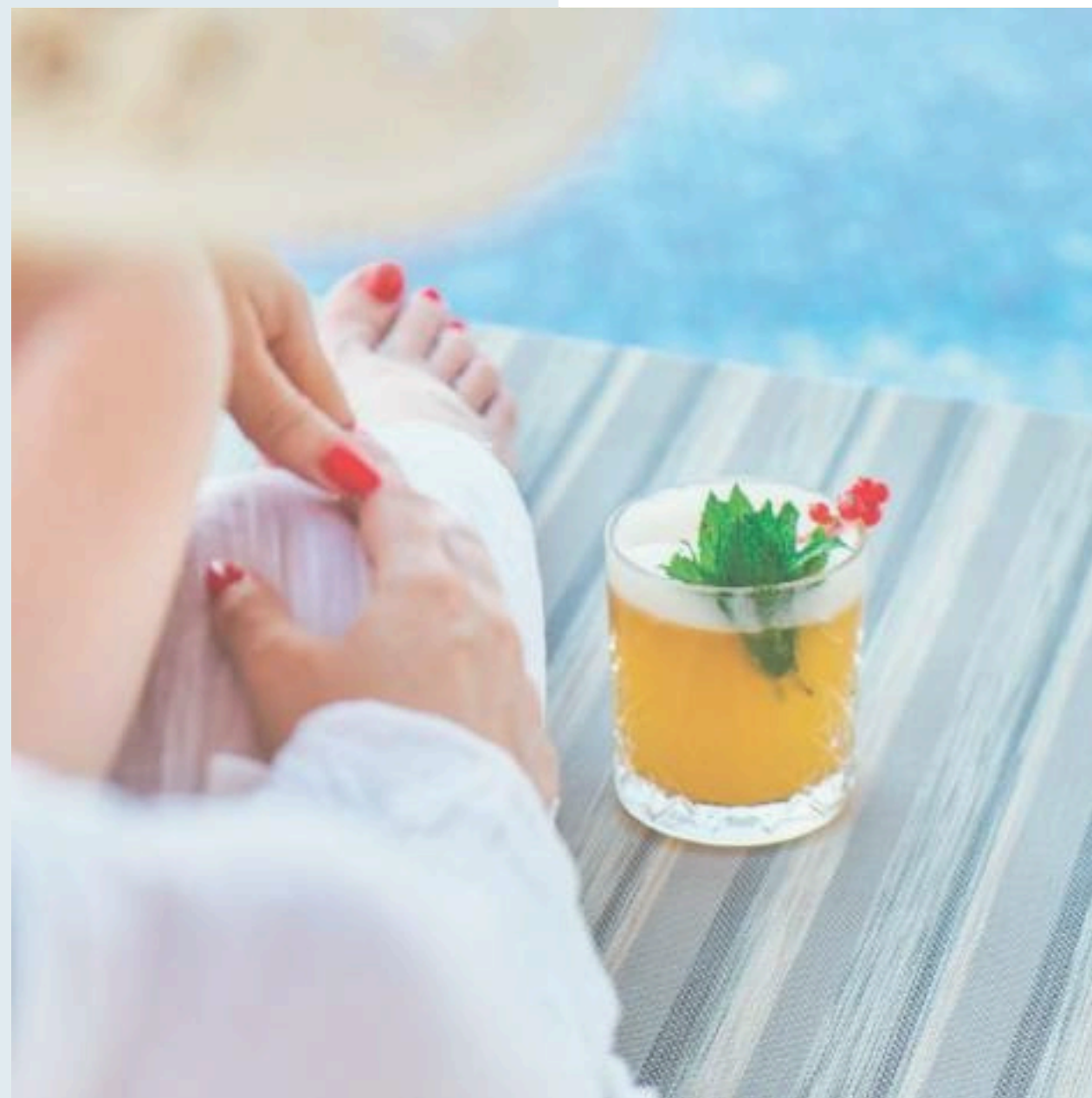
MESMERIZING  
GREENS BENEATH  
YOUR FEET



4 BHK GOLF LIVING

EXCEPTION ON  
EVERY  
GLIMPSE  
REMARKABLE ON  
EVERY EXPERIENCE

NOT JUST A SPACE..  
A ENTICING ICON  
TO DWELL IN.



FOR THE ONES  
WHO CHOOSE  
BEYOND DESIRES...

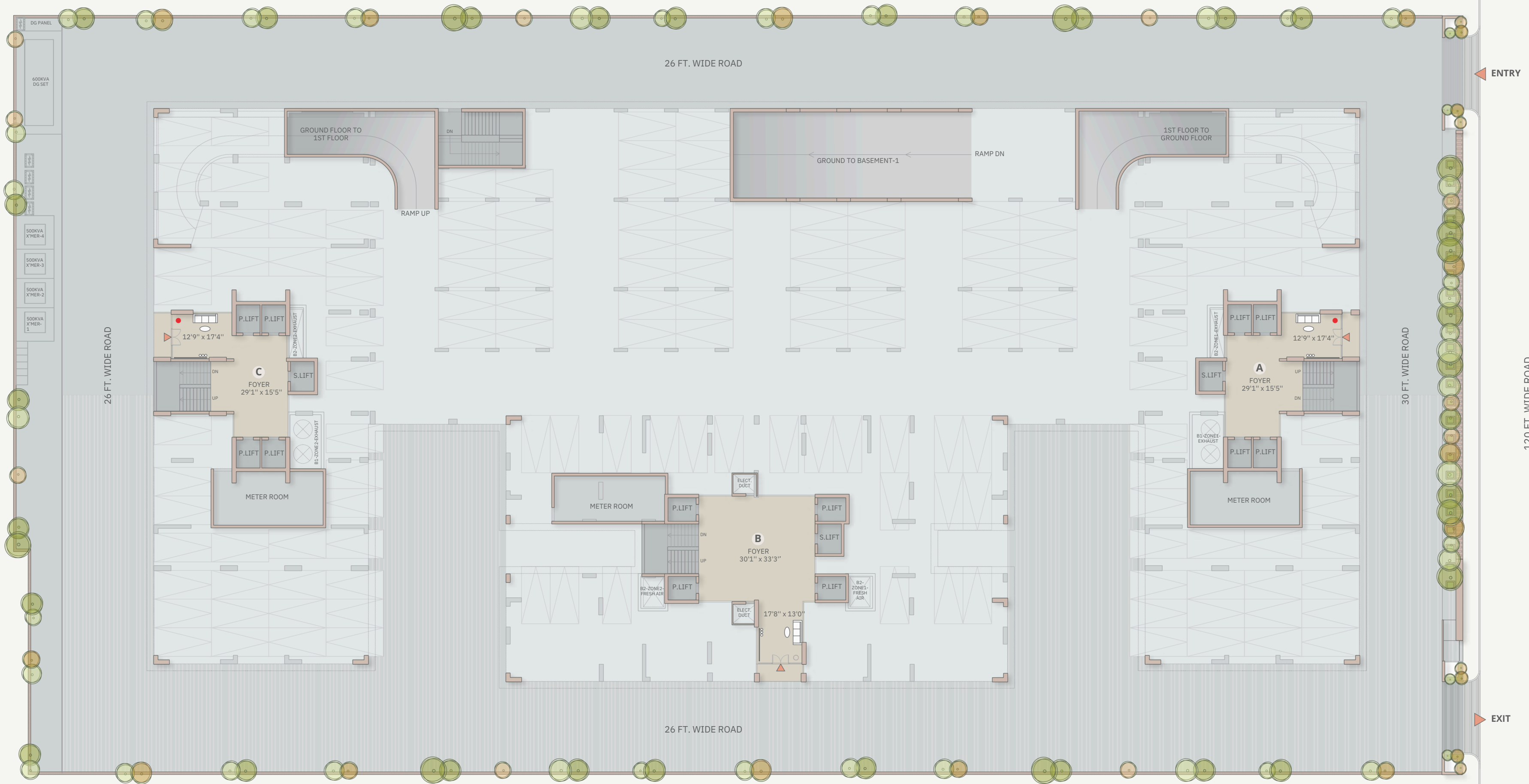




ABSOLUTE SOPHISTICATION



TIMELESS  
EXCELLENCE



  
 GROUND FLOOR PLAN



# TYPICAL FLOOR PLAN

2nd to 21st floor

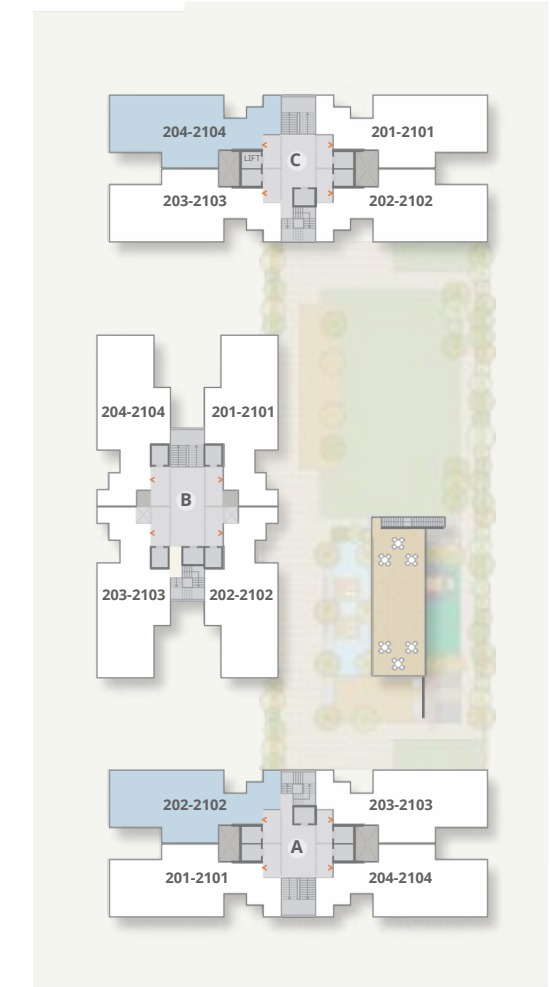
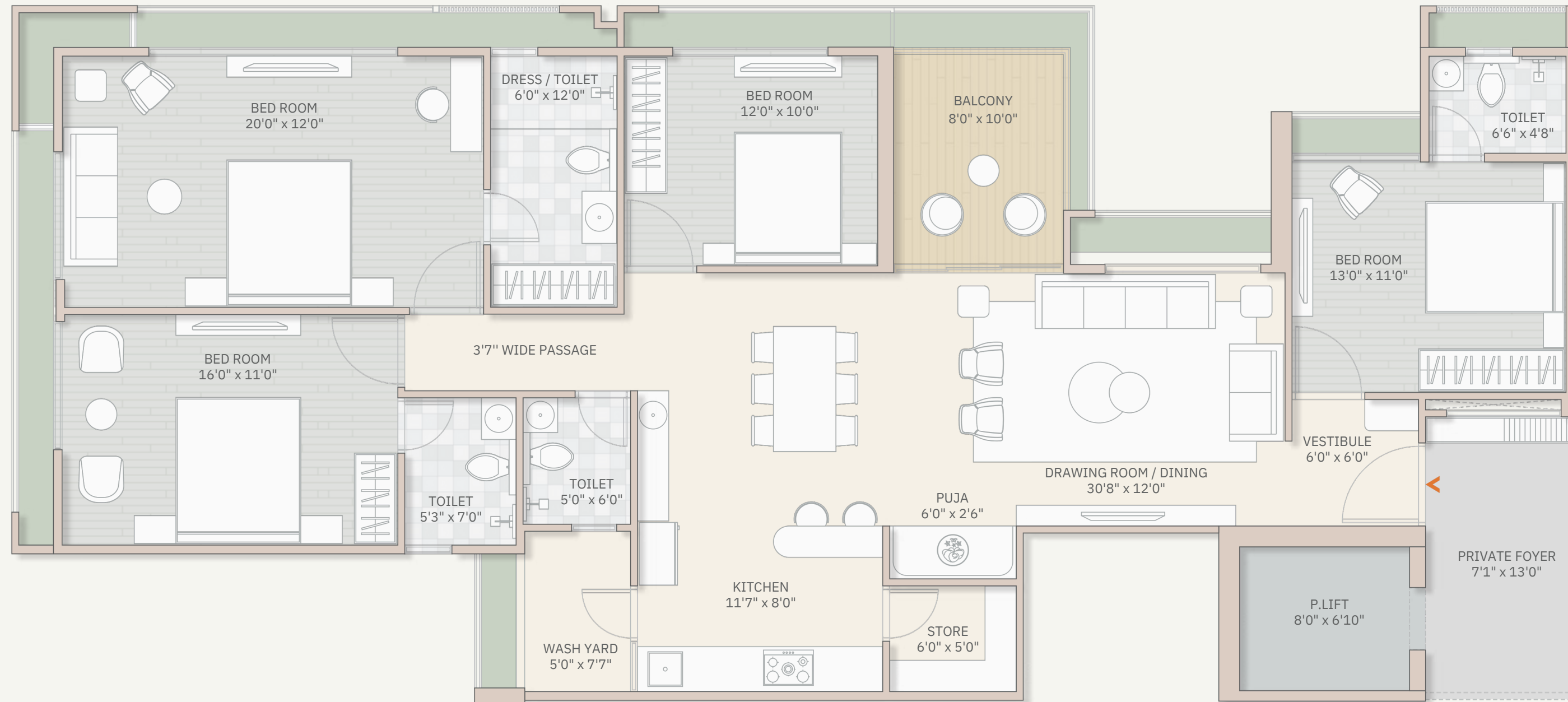


A PRIVATE OASIS  
OF LUXURY









TYPICAL UNIT PLAN



## SPECIFICATIONS

### WALL FINISH

---

- Internal Smooth Finish Plaster With Double Coat Birla Putty.
- Face Plaster Or Texture With Acrylic Paint.

### DOOR

---

- Main Door - Decorative Main Door With Wooden Frame.

### KITCHEN

---

- Granite or Vitrified Platform With Stainless Steel Sink
- Designer Glaze Tile Dedo Upto Lintel Level.

### ELECTRIFICATION

---

- ISI Modular Switches.
- ISI Wires.
- Distribution Board With MCB For Safety And Protection.

### DEVELOPERS NOTE

- All rights reserved by the developers for alteration / modification / improvement in specification and changes in dimensions and planning shall be binding to all.
- All architectural and interior views in the brochure are computer graphics simulated interpretation of the actual project.
- The brochure is just for an easy presentation of the project and should not be treated as a legal document.
- Electrical charges, Legal charges, AUDA any other facility charges shall be borne by purchasers.
- Stamp duty, registration fees, all taxes and cess shall be borne by purchasers.
- Payment should be in favour of Shilp Shantigram LLP.
- In the interest of continual developments in the design and quality of construction, the developer reserves all rights to make any changes in the scheme including and not limited to technical specifications, design, planning, layout and all purchasers shall abide by such changes.
- Changes / alterations of any nature including elevation, exterior colour scheme, balcony grill or any other changes affecting the overall design concept and outlook of the scheme are strictly NOT PERMITTED during or after the completion of the scheme.
- Any RCC member (Beam, Column, Slab) must not be damaged during the interior work of purchasers.
- Subject to Ahmedabad Jurisdiction only.

### FLOORING

---

- Vitrified Tile Flooring In Entire Apartment.

### WINDOWS

---

- Sliding Aluminium Window Section With Anodized Or Powder Coated.

### TOILET

---

- Designer Ceramic Or Glaze Tile Upto Lintel Level.
- CP Fittings - Chrome Plated Branded Bathroom Fittings.