

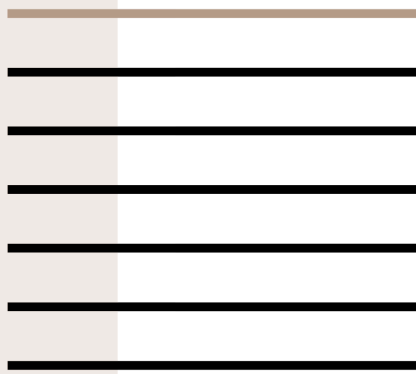


**ADDOWN REALTY**  
— Connecting You To Your Perfect Property —



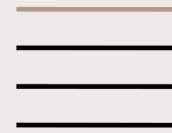
**3BHK**

APARTMENTS  
RETAIL SHOPS





GRAND WELCOME  
ENTRANCE LOUNGE



VERTICAL  
AMENITIES



100%  
LIFE-STYLED TERRACE



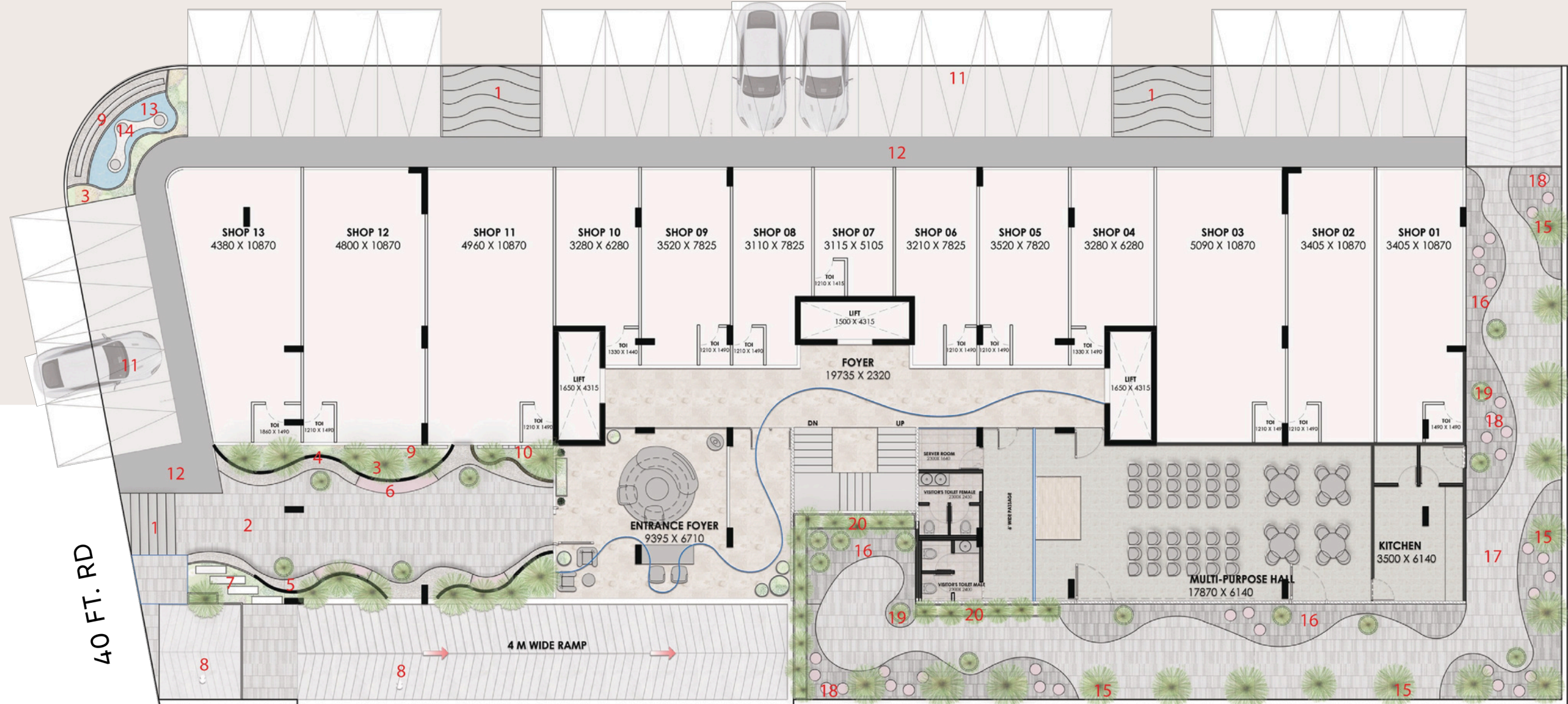
GRADEN &  
LAKE FACING

# L LIFESTYLE FEATURES

FIRST TIME IN AHMEDABAD

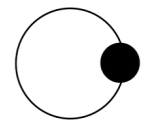
# MASTER PLAN - GROUND FLOOR

40 FT. RD



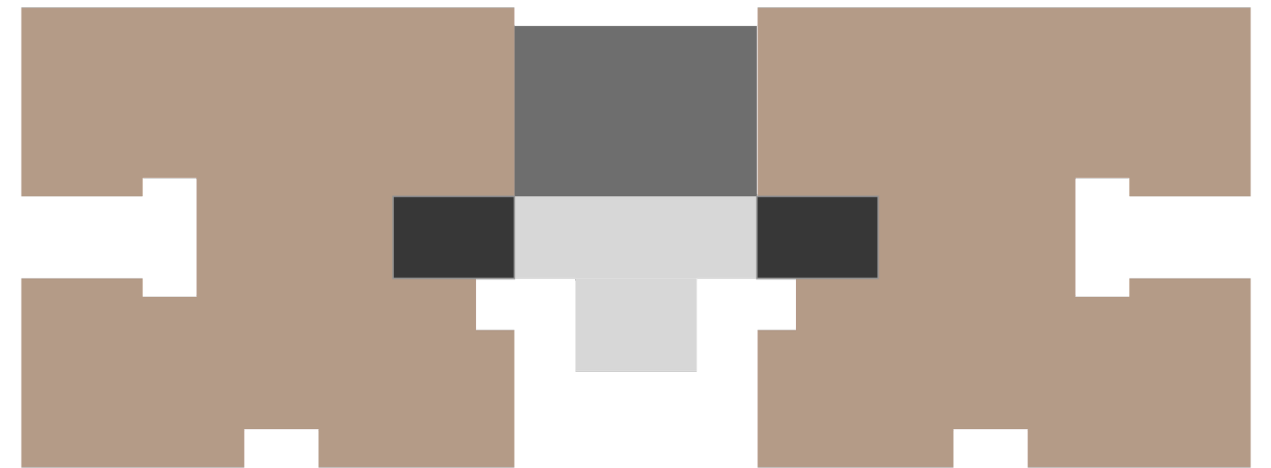
## LEGENDS

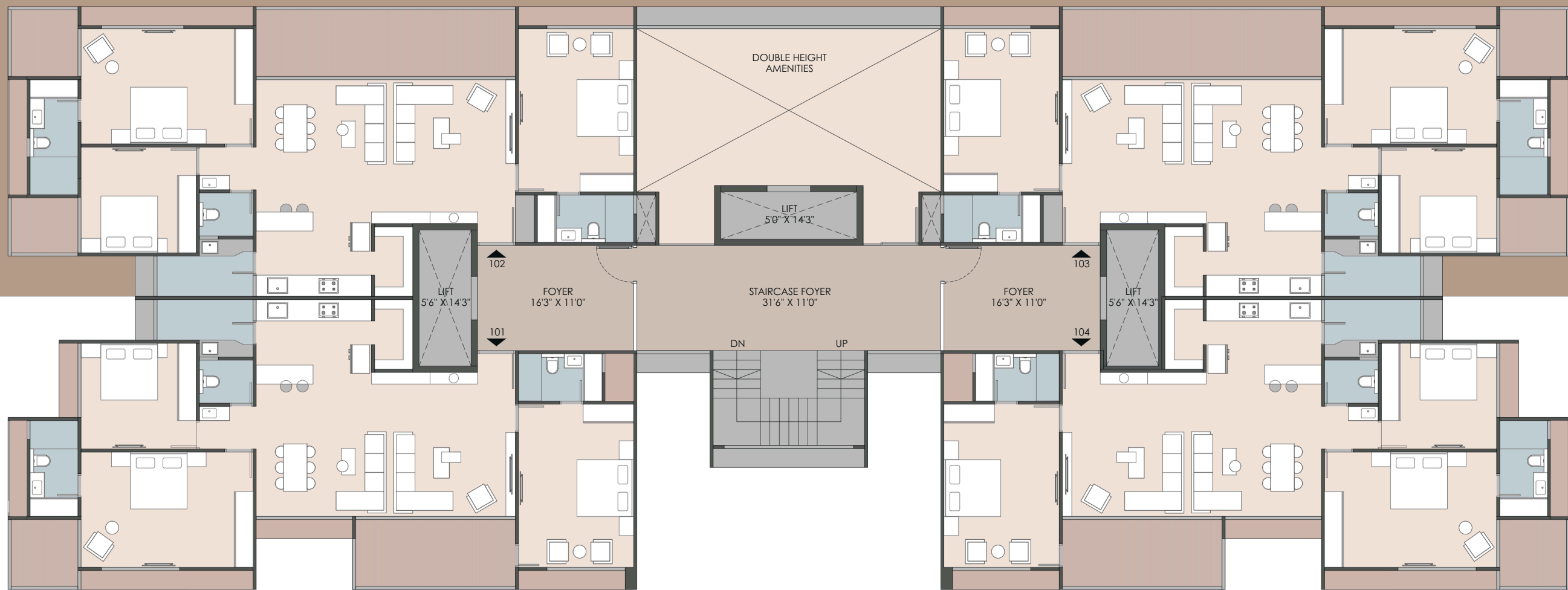
- |                               |                     |                |                        |
|-------------------------------|---------------------|----------------|------------------------|
| 1) Entry                      | 6) Seating          | 11) Parking    | 16) Flooring pattern 1 |
| 2) Entry portal               | 7) Stepping Stones  | 12) Passage    | 17) Flooring pattern 2 |
| 3) Shrub Bed                  | 8) Ramp to basement | 13) Water body | 18) Moveable seats     |
| 4) Wooden slats as per design | 9) Name plate       | 14) Sculpture  | 19) Moveable pots      |
| 5) Grit bed                   | 10) Letter box      | 15) Tree bed   | 20) Planter box        |



# 2 UNIT SIZE VARIANTS

- 7 FLOORS LOW-RISE WITH BASEMENT PARKING
- 700+ SQ. FT. COMMON FOYER
- 4 UNITS PER FLOOR
- 2 SIDE VENTILLATED COMMON FOYERS
- VASTU-COMPLAINT DESIGN
- GREEN BUILDING CERTIFICATION
- SERVICE LIFT FOR AMENITIES





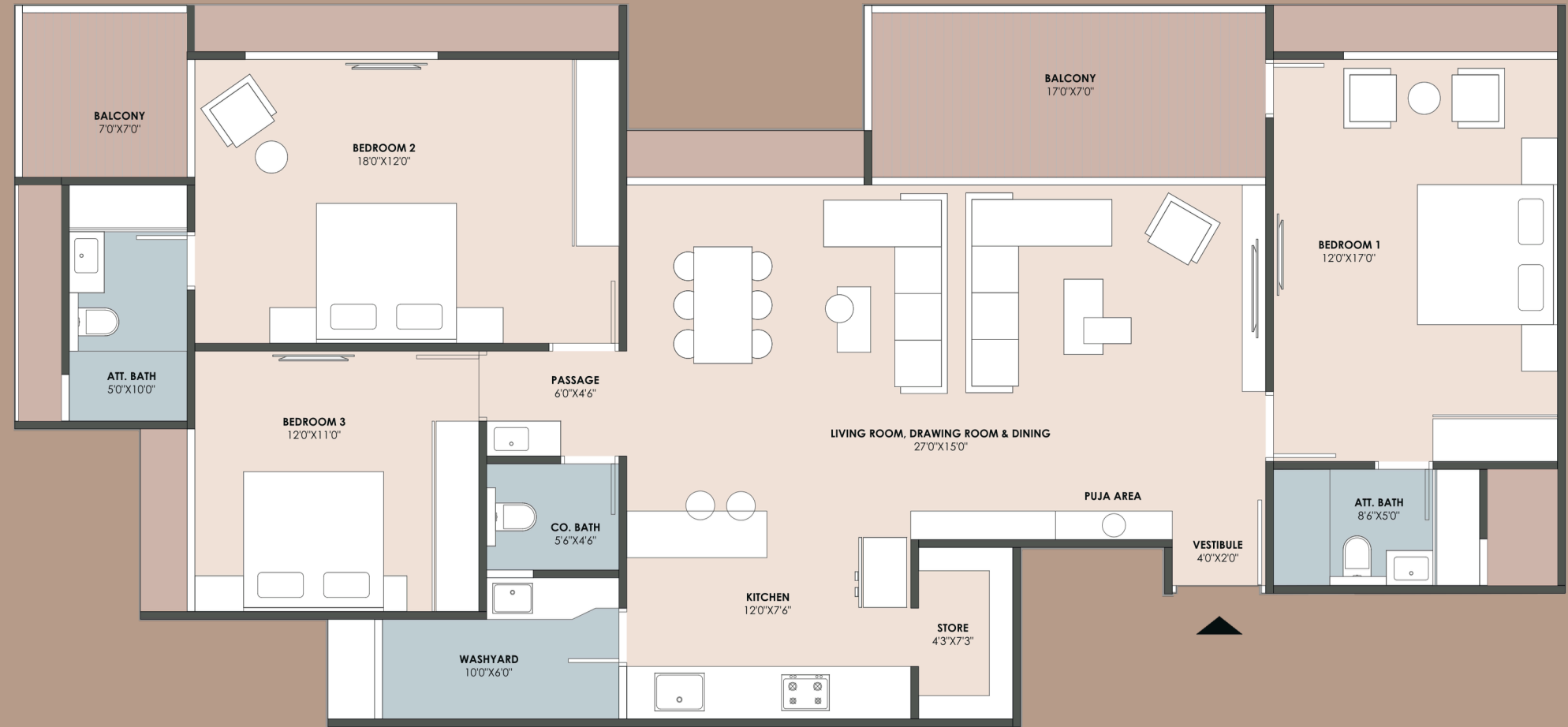
MASTER BLOCK PLAN - RESIDENTIAL

# UNIQUE UNIT FEATURES

- 3 BALCONIES
- 27 FEET LONG CENTRAL BALCONY
- ALL BEDROOMS WITH BALCONY ACCESS
- 2 FULL-SIZE MASTER BEDROOMS WITH DRESS-TOILET
- ALL BEDROOMS OPEN-FACING WITH FULL-SIZE INFINITY WINDOWS
- SEPARATE KITCHEN WITH SERVICE PLATFORM
- SEPARATE STOREROOM



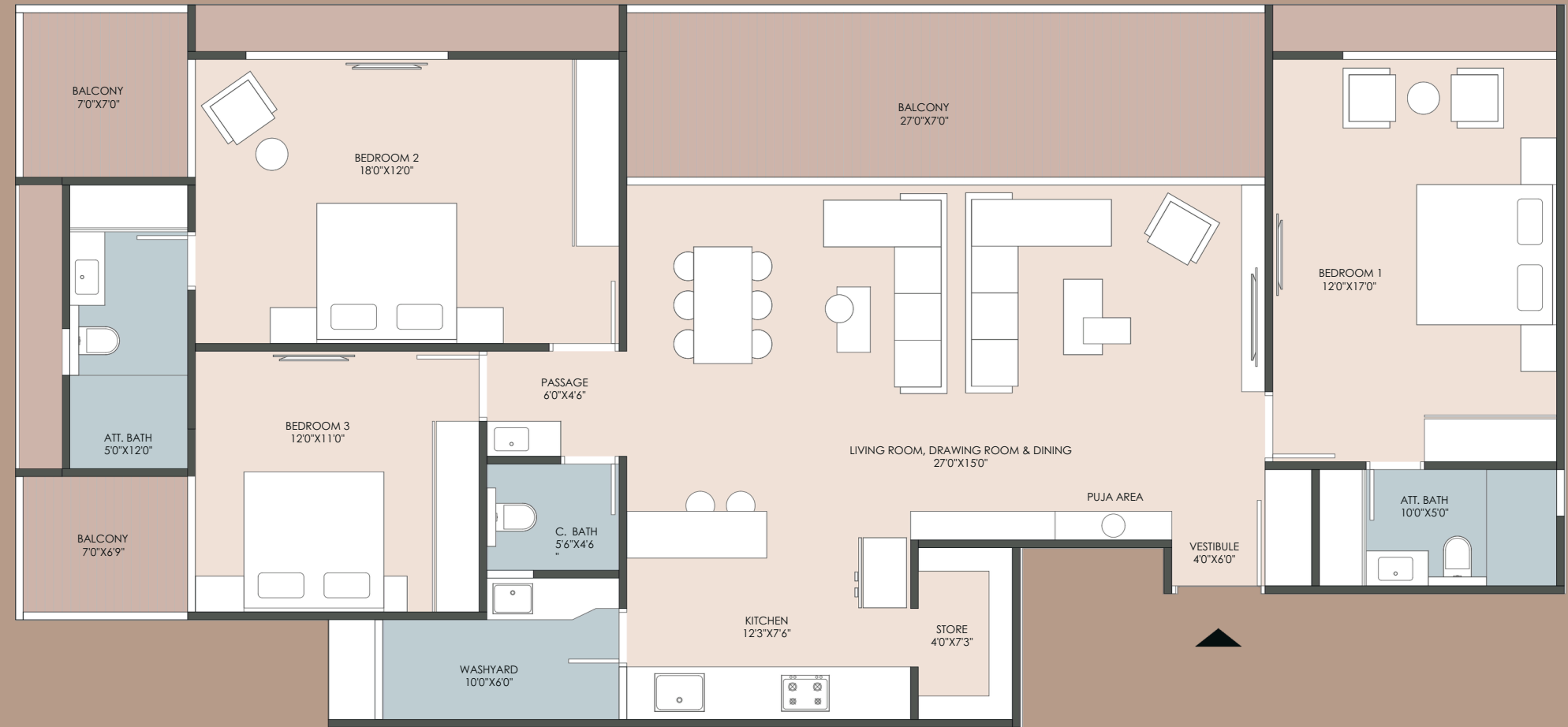
**303 SQ. YD**  
S.BUILT AREA



KEY PLAN



**339 SQ. YD**  
S.BUILT AREA



KEY PLAN



# TERRACE GARDEN

## FLOOR PLAN

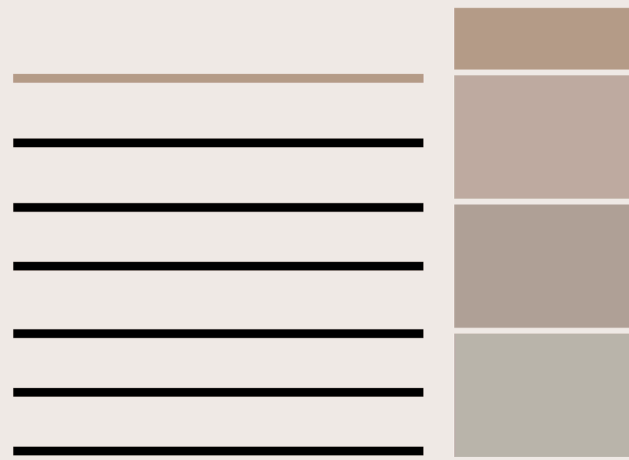


### LEGENDS

- |                        |                              |                   |                |
|------------------------|------------------------------|-------------------|----------------|
| 1) Jhula Court         | 6) EPDM flooring             | 11) Bonfire space | 16) Swing deck |
| 2) Movable Seating     | 7) Play equipments           | 12) Seating area  | 17) Stone      |
| 3) Planter             | 8) Elevated deck area        | 13) Swing portal  | 18) Toilet     |
| 4) Movable pots        | 9) Yoga and event deck       | 14) Ports         | 19) Lawn       |
| 5) Stairs to staircase | 10) Outdoor kitchen platform | 15) Pergola       |                |

# VERTICAL AMENITIES

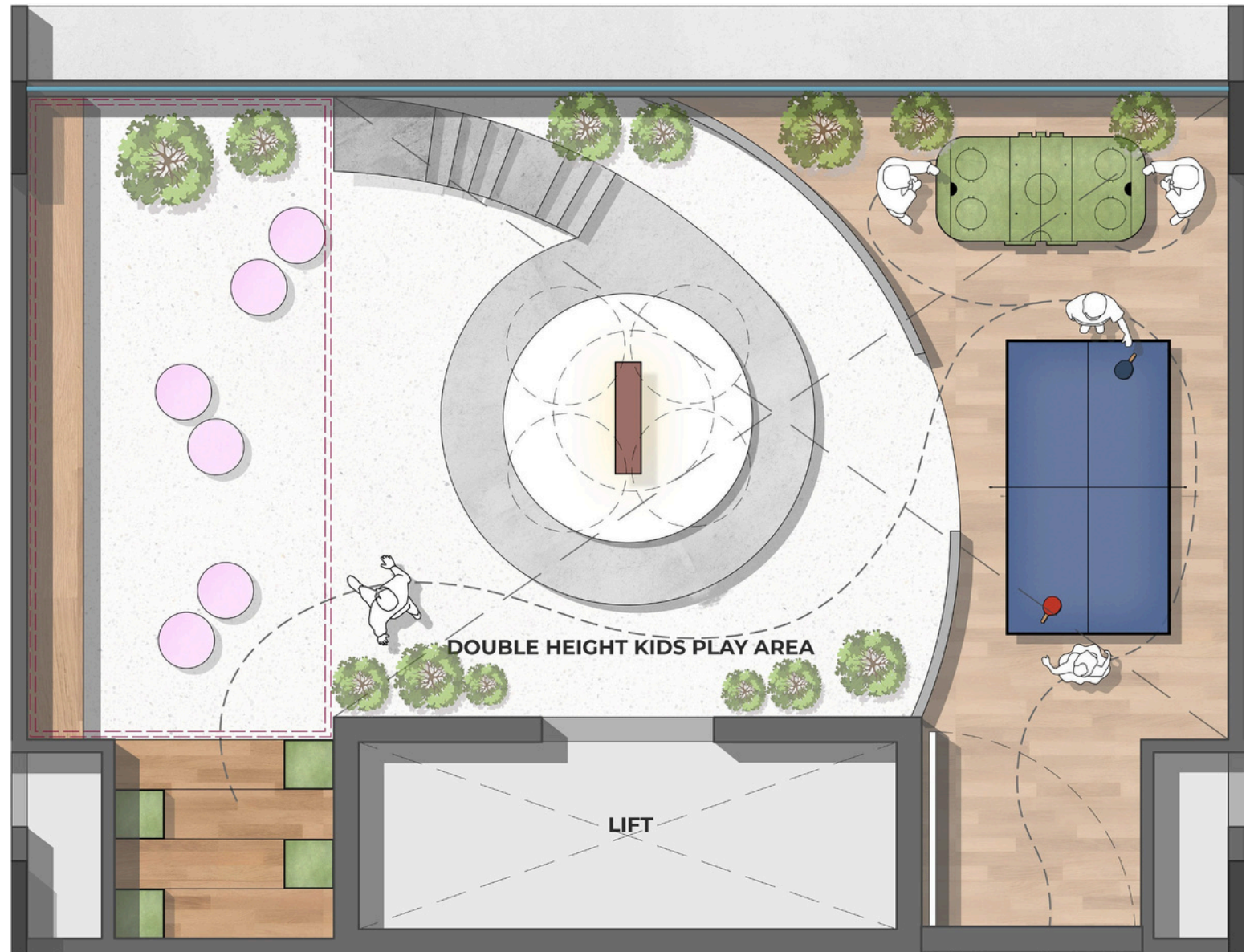
FLOOR PLAN



DOUBLE HEIGHT  
VERTICLE AMENITIES

## LEVEL 1

FLOOR 1 - INDOOR GAMES / CHILDREN PLAYING



# VERTICAL AMENITIES

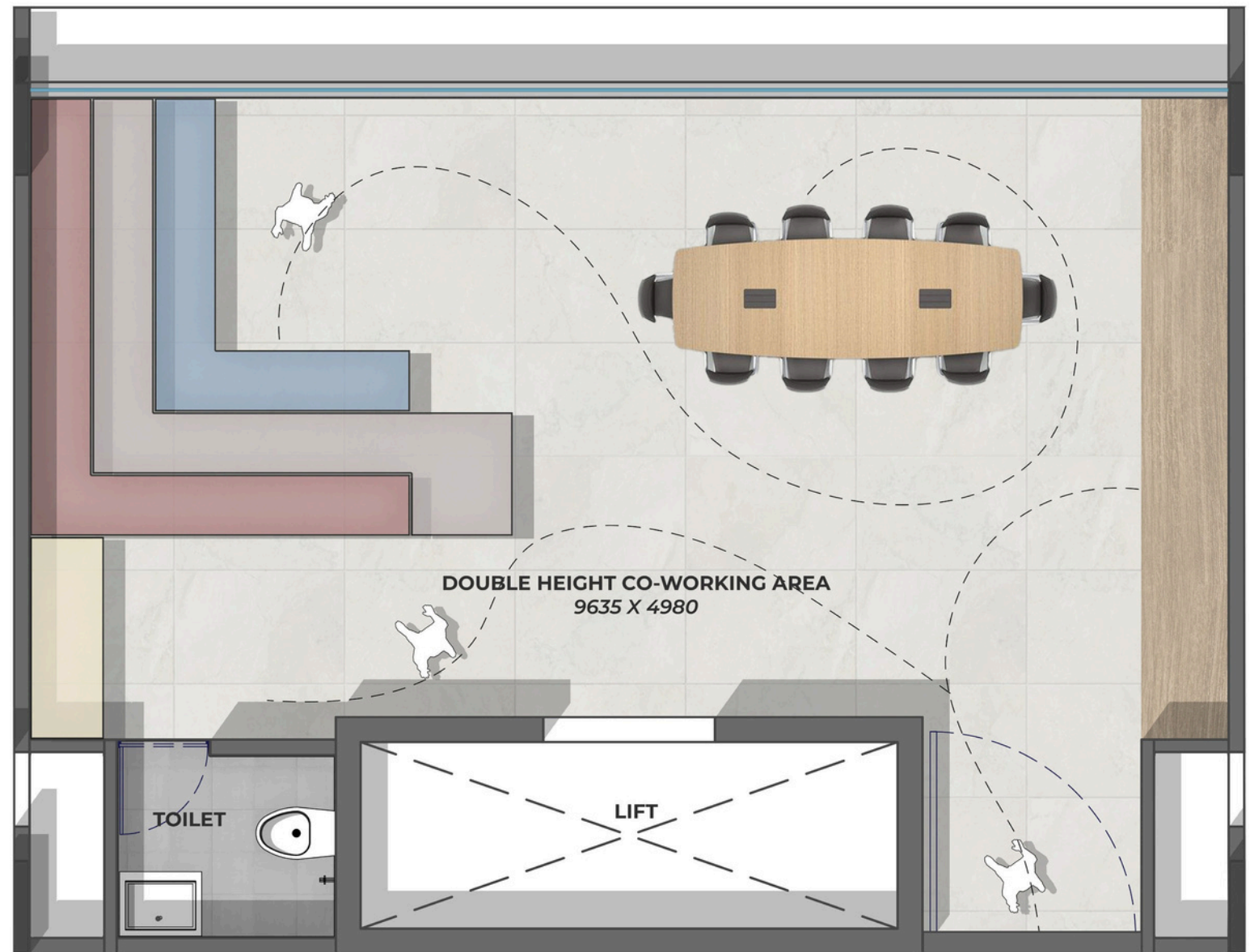
FLOOR PLAN



DOUBLE HEIGHT  
VERTICLE AMENITIES

## LEVEL 2

### FLOOR 3 - CO-WORKING



# VERTICAL AMENITIES

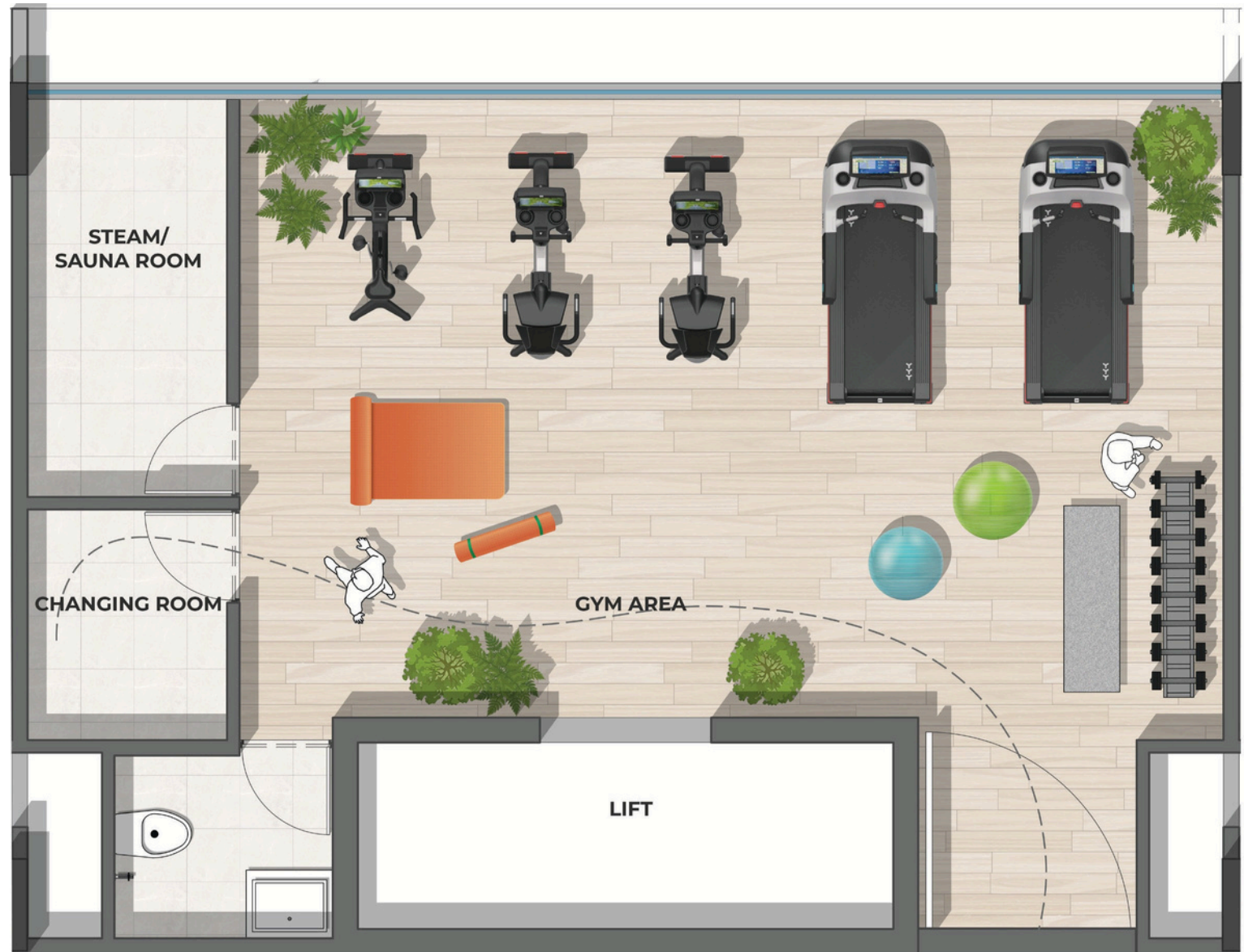
FLOOR PLAN



DOUBLE HEIGHT  
VERTICLE AMENITIES

## LEVEL 3

FLOOR 5 - Double Heighted Gym



# VERTICAL AMENITIES

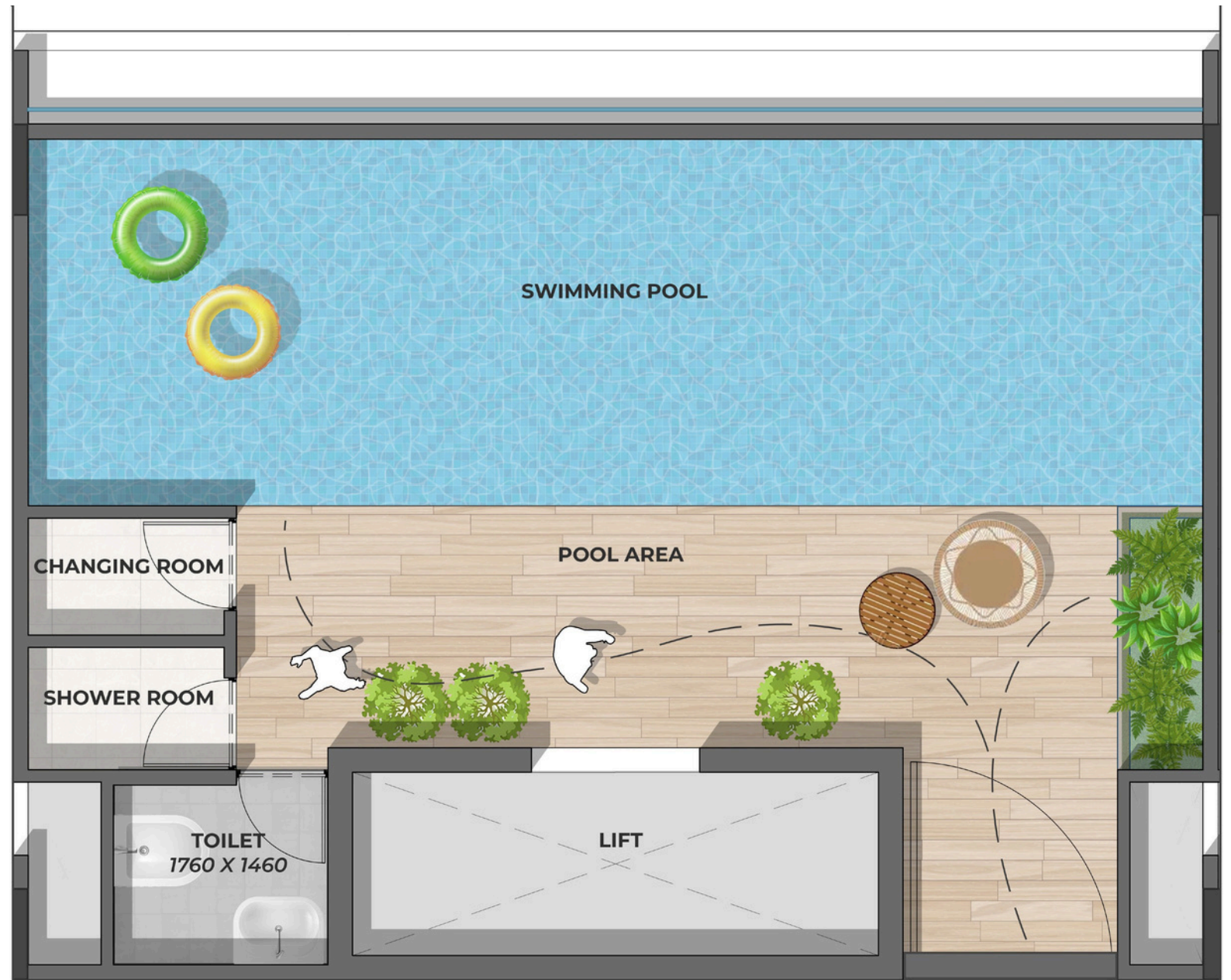
FLOOR PLAN



DOUBLE HEIGHT  
VERTICLE AMENITIES

## LEVEL 4

FLOOR 7 - SWIMMING POOL



# AMENITIES

## FITNESS AND WELLNESS



INDOOR GYM WITH ZUMBA SPACE



YOGA DECK



ZUMBA SPACE



STEAM/SAUNA BATH SPACE

## RECREATION AND LEISURE



INFINITY SWIMMING POOL



INDOOR GAME ZONE



CHILDREN PLAY AREA



BANQUET HALL



OPEN THEATRE SCREEN



BONFIRE SPACE

## OUTDOOR AND NATURE



TERRACE GARDEN



DESIGNER GAZEBO



LAKE FACING DECK SEATINGS



MOVEABLE GROUP SIT-OUTS



BARBEQUE PLATFORM



SWING PORTAL



PERGOLAS

## SOCIAL AND COMMUNITY SPACES



SENIOR CITIZEN SIT-OUTS



OUTDOOR KITCHEN PLATFORM

## ENTRANCE AND RECEPTION



DESIGNER ENTRANCE FOYER



WAITING LOUNGE WITH RECEPTION

# FACILITIES

## PARKING AND TRANSPORTATION



BASEMENT PARKING [2 ALLOTTED]



VISITOR'S PARKING



DROP-OFF ZONE



NO VEHICLE ZONE



EV CHARGING POINT

## COMMUNITY AND SOCIETY SERVICES



M | F COMMON WASHROOM



SOCIETY OFFICE



SOCIETY STORE ROOM

## SECURITY



SECURITY CABIN



CCTV CAMERA



BOOM BARRIER

## INFRASTRUCTURE AND UTILITIES



RCC PAVED INTERNAL ROADS



AUTOMATIC HIGH-SPEED LIFTS



SOLAR PANELS



24X7 WATER SUPPLY



GAS PIPELINE



POWER BACK-UP FOR COMMON AREA



HANDICAP FRIENDLY INFRASTRUCTURE