



ADDOWN REALTY

— Connecting You To Your Perfect Property —

A photograph of a modern garden. In the center, a tall palm tree stands under a wooden pergola with a curved, lattice-like structure. The pergola is made of dark wood and has a series of horizontal slats. In the background, a multi-story building with balconies is visible. The sky is clear and blue. The overall scene is bright and sunny.

The Journey SO FAR

We know your journey. Your pursuits have built your stature. A stature raised with perseverance, farsighted vision, well-deserved achievements, & blessings of your ancestors. You laid out your own silver platter and now is the time to add a new milestone to your journey. A new home. A home that is a reflection of your eminence, your endeavours, the fruit of your sweet labour.

Alaya Belmonte, 3BHK elite residential apartments are designed for you to cherish a magnificent life & a worthy lifestyle.

A well-crafted LIFE

A Worthy lifestyle is where you celebrate every moment, every day.
A life, curated for you and your family to feel the comfort of a home and
the exclusivity of an unparalleled lifestyle.

Alaya Belmonte, are exquisitely designed 3 BHK residences that evoke
eminence. A residential project, with ample open spaces, landscaped
gardens, and aesthetically pleasing common spaces. From a Yoga Room
to the celebrations hall, we have integrated many meaningful modern
amenities; the key to a content and a joyful life.





The Belmonte EXPERIENCE


Multipurpose Hall

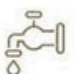

Well-Designed
Entrance Foyer


Walking Track

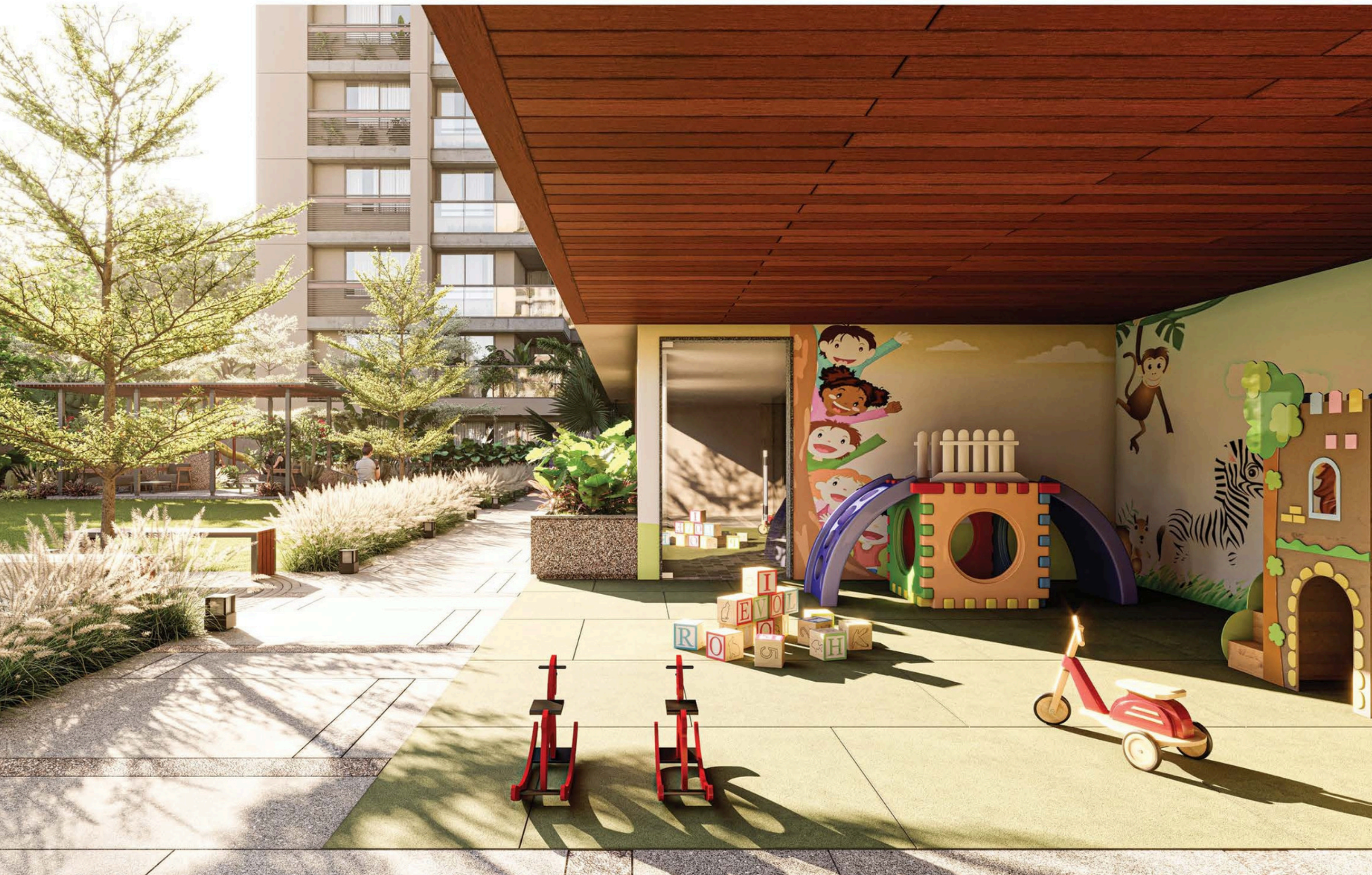

Allotted Parking


Kids Play Area


Indoor Games

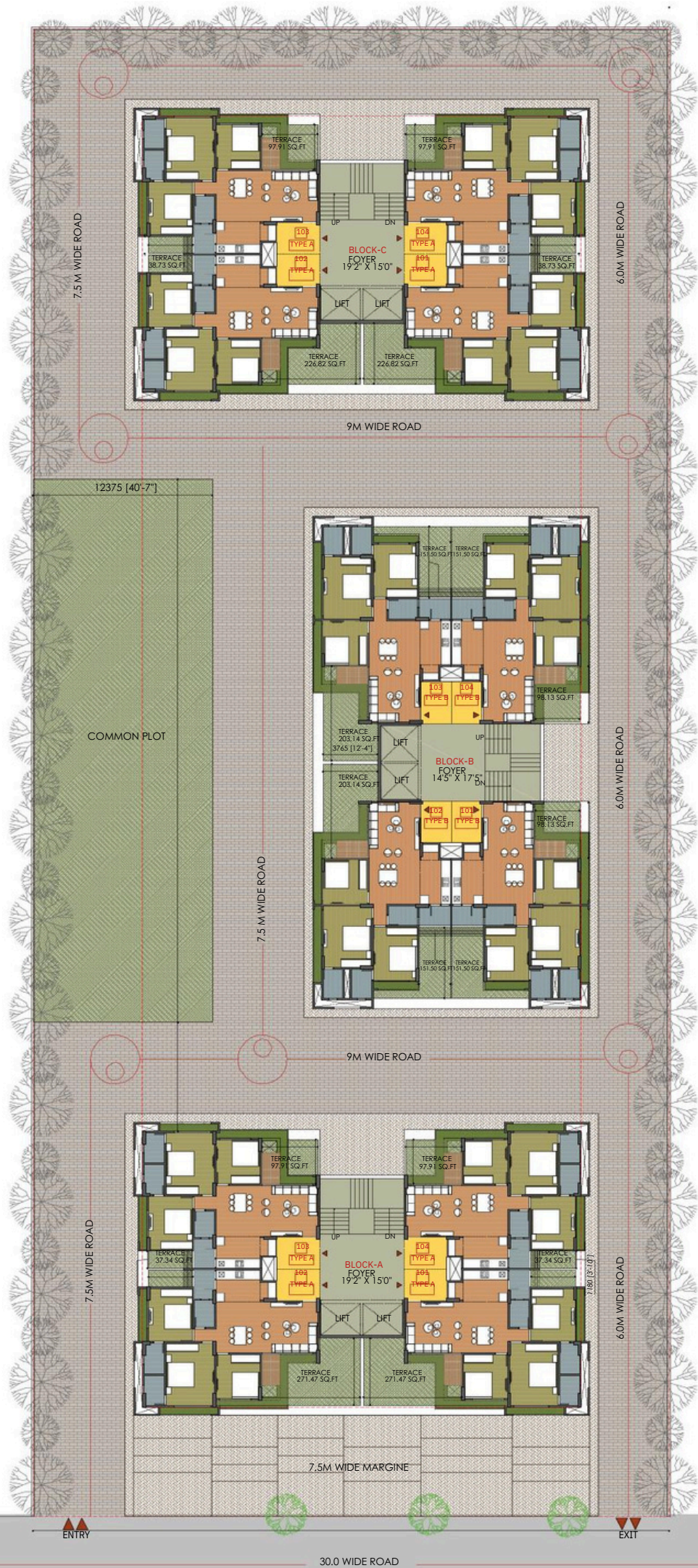

24 Hour
Water Supply


24x7 Security





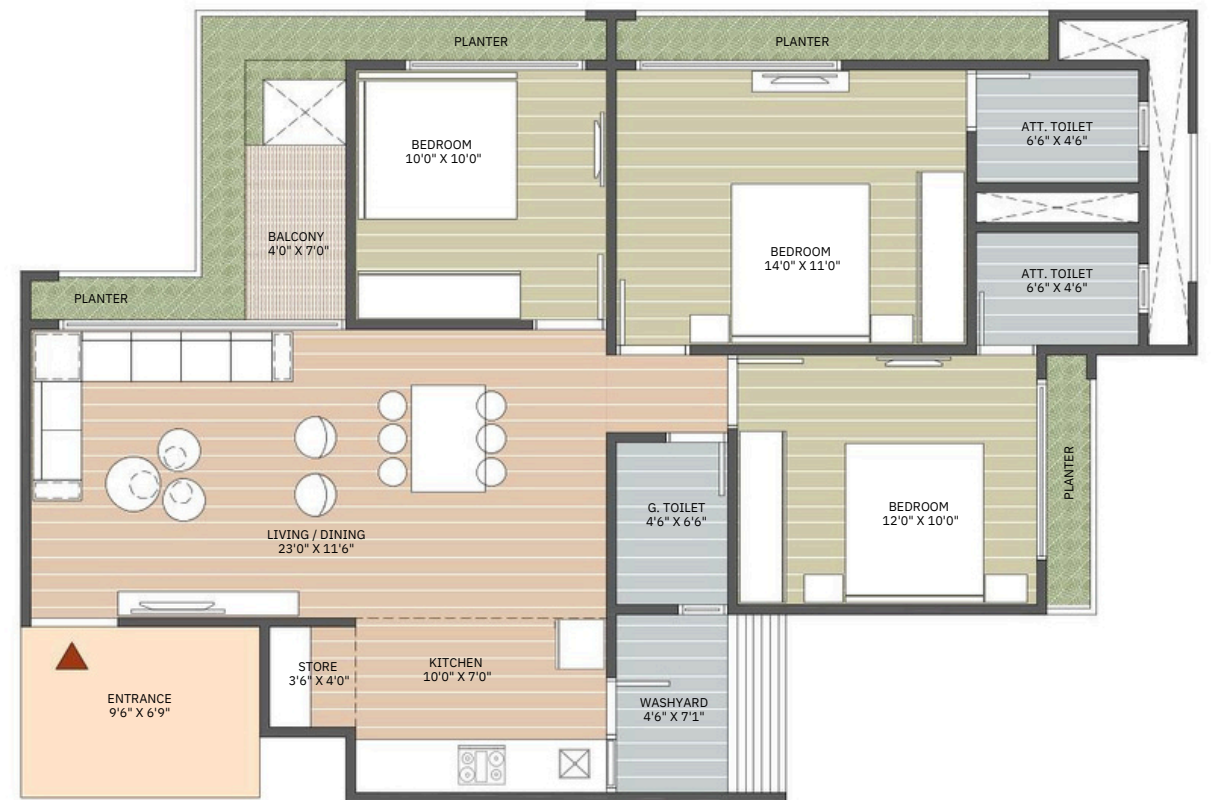
First floor



3BHK (Type-A)

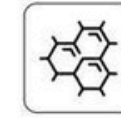


3BHK (Type-B)



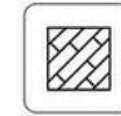


SPECIFICATION



STRUCTURE

Earthquake resistant
R.C.C. frame structure



FLOORING

Vitrified tiles in all bedrooms, kitchen,
living and dining area
Ceramic tiles in all bathrooms
Kota stone or similar in wash areas



KITCHEN

Polished natural granite platforms
Stainless steel kitchen sink
Glazed ceramic tile dado up to
the lintel level on walls above
the platform



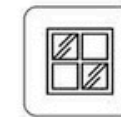
WALL FINISH

Interior walls are plastered and
putty finished
Exterior walls are painted with
acrylic base paint



ELECTRIFICATION

Concealed PVC conduits with PVC
insulated ISI grade copper wiring
Adequate points for lighting and power
Decorative modular switches with
MCB distribution board
Air-conditioning points only in all bedrooms
Geyser points in all bathrooms
Provisions for DTH and broadband
internet connection



FRAMINGS

Flush doors with wooden framing in
all bedrooms
Powder coated/anodized aluminium
sliding windows with stone jambs



BATHROOMS/TOILETS

Glazed ceramic tiles dado on
the wall up to lintel level
High quality sanitaryware and
plumbing fixtures