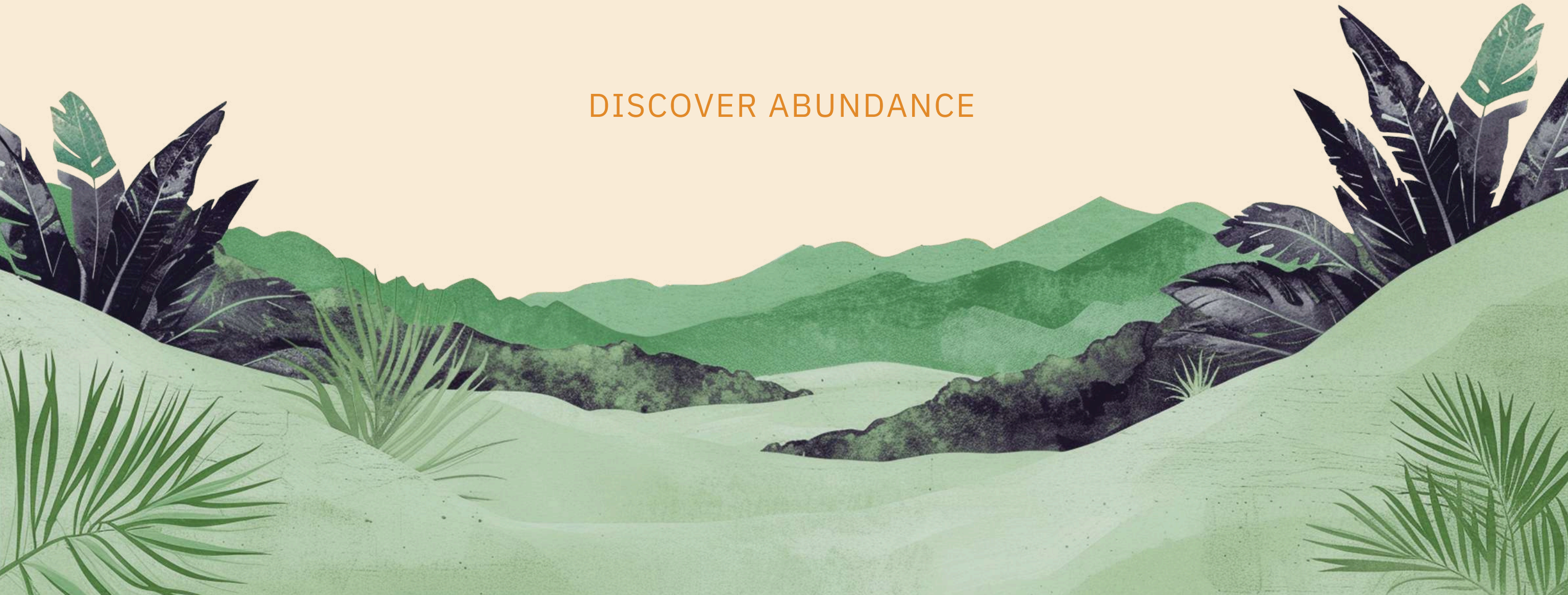




ADDOWN REALTY
— Connecting You To Your Perfect Property —

DISCOVER ABUNDANCE



An illustration on the left side of the page features a large, textured orange sun in the upper left corner, with a trail of small orange dots falling from its base. Below the sun are several potted plants in various styles of pots (white, orange, and terracotta). The plants include a tall palm-like plant, a smaller leafy plant, and a small succulent. The background behind the plants consists of vertical stripes in shades of light green and white.

Abundant Life

Of Peace & Elegance

The residences at Anantara Alora-spanning luxurious 3BHK & 4BHK layouts-are sanctuaries of peace and elegance. Each home is a canvas of modern aesthetics, smart home features, and premium finishes. Spacious interiors are complemented by private balconies, offering personal retreats that open up to breathtaking views. These homes are designed not just for living but for experiencing life's abundance in every moment.

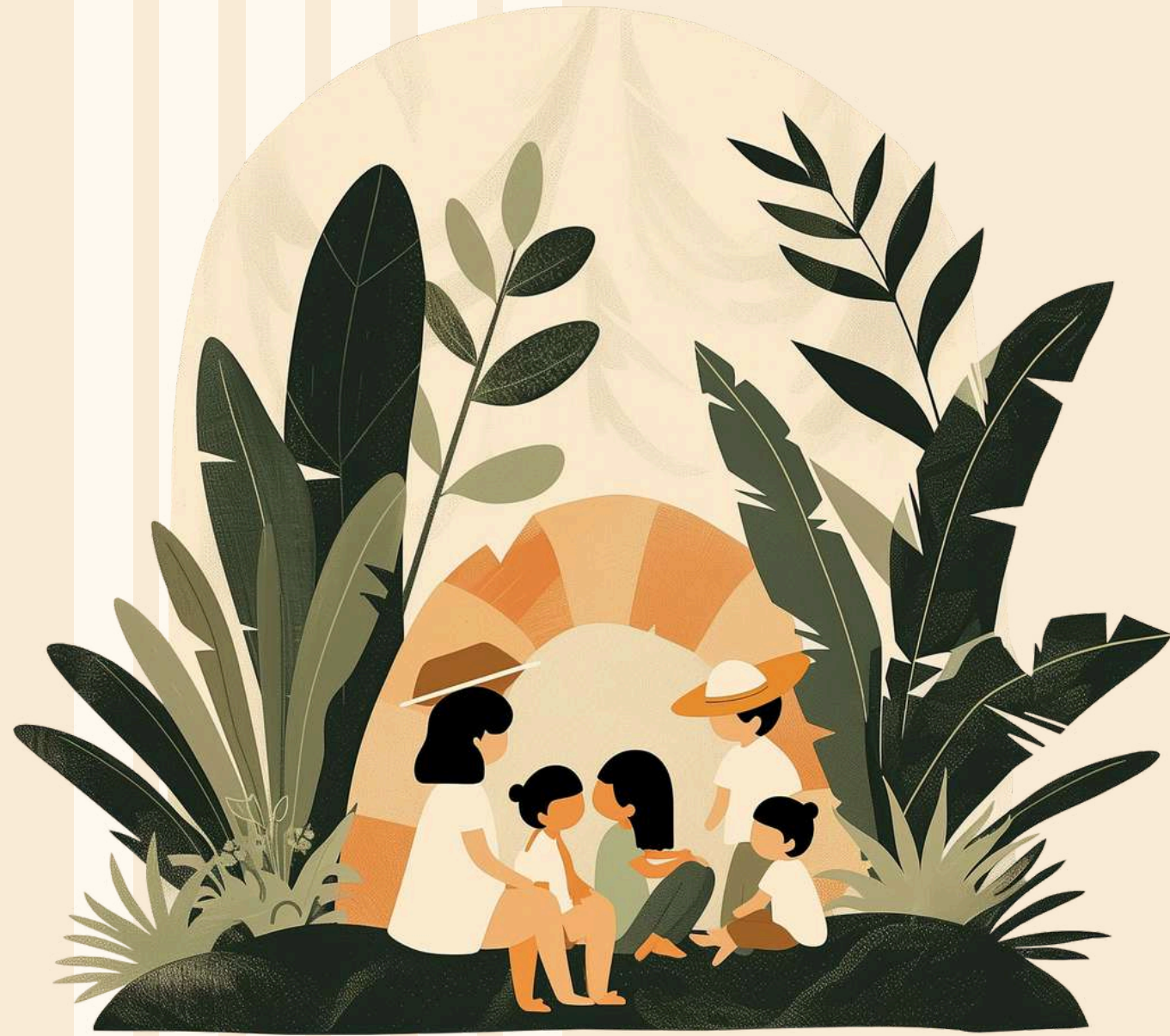
21 Storeys

3 Towers

240 Abodes

12 Penthouses





Abundant Opportunities

To Dive & Unwind

Outdoors



*Urban Forest
Landscaping*



*Children's
Play Area*



*Senior Citizen
Sitouts*



Indoors



*Multi-Purpose
Lounge*



*Indoor Games
Area*



Gymnasium



Underwater



Mini Water Park



Swimming Pool



Jacuzzi





Abundant Care For Huffing & Puffing

Anantara Alora embraces the love for our furry family members with a specially designed pet care room. This exclusive space features a luxurious pet spa, complete with premium pet care essentials, ensuring your beloved pets receive the pampering and care they deserve. It's a testament to our commitment to providing a holistic living experience for all residents, tail-waggers included!



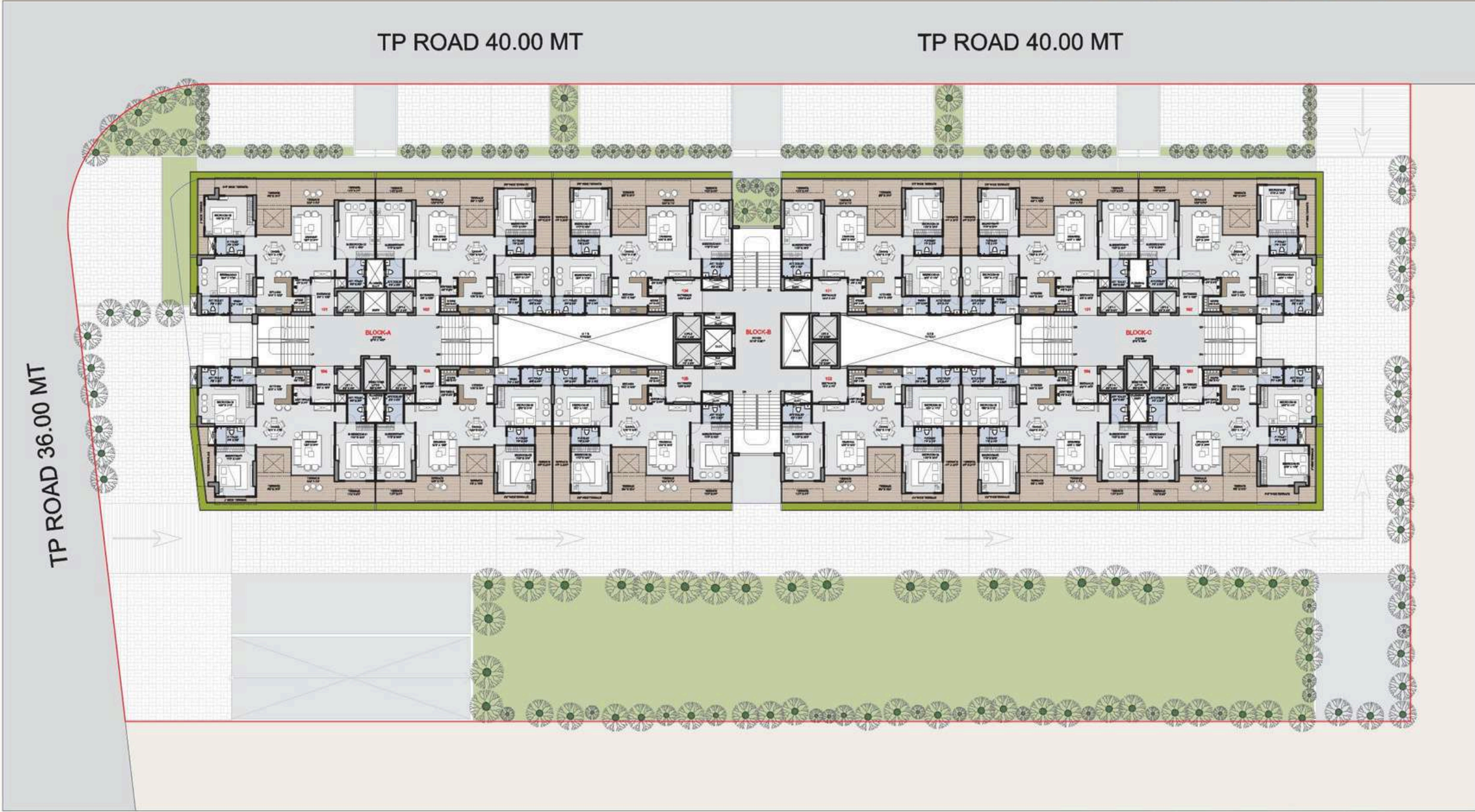


Abundant Spaces To Live & Thrive

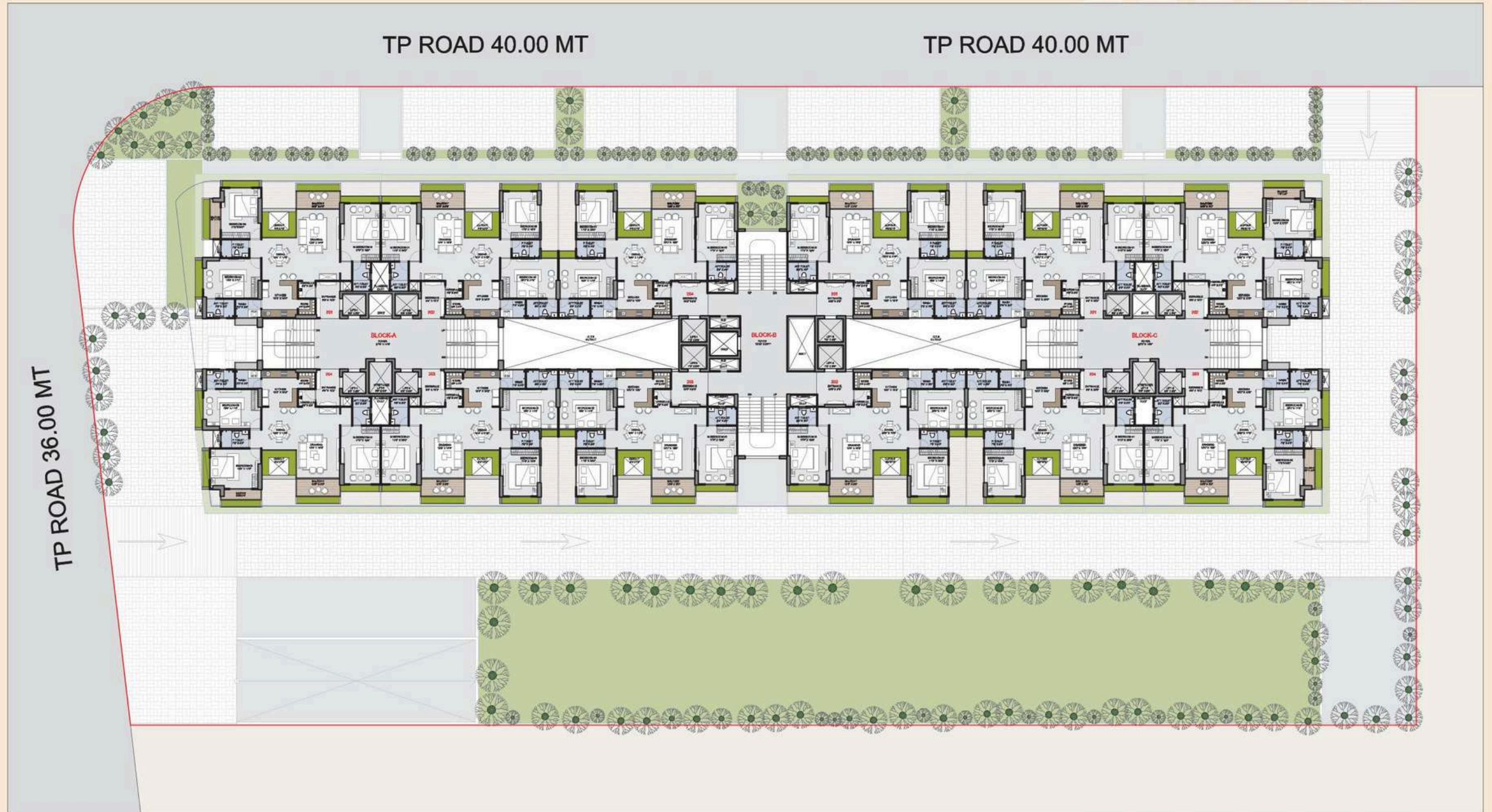
Anantara Alora, strategically located between Science City and Shilaj Circle, boasts a prime 2 road corner plot with access to 40m and 36m roads. Surrounded by the R3 Low-Rise Zone, it offers tranquil living. The spacious 3 BHK residences feature 2 master bedrooms with attached bathrooms, private lift openings, and vestibules. Drawing, dining, and kitchen areas are bathed in natural light. All apartments have either road-facing or common plot-facing views and east-west entry. Additional amenities include 3-level basement parking, dual staircases, stretcher elevator, and courtyard-shaped balconies. Luxurious duplexes on the 21st and 22nd floors elevate living standards, ensuring opulent and sophisticated lifestyles.



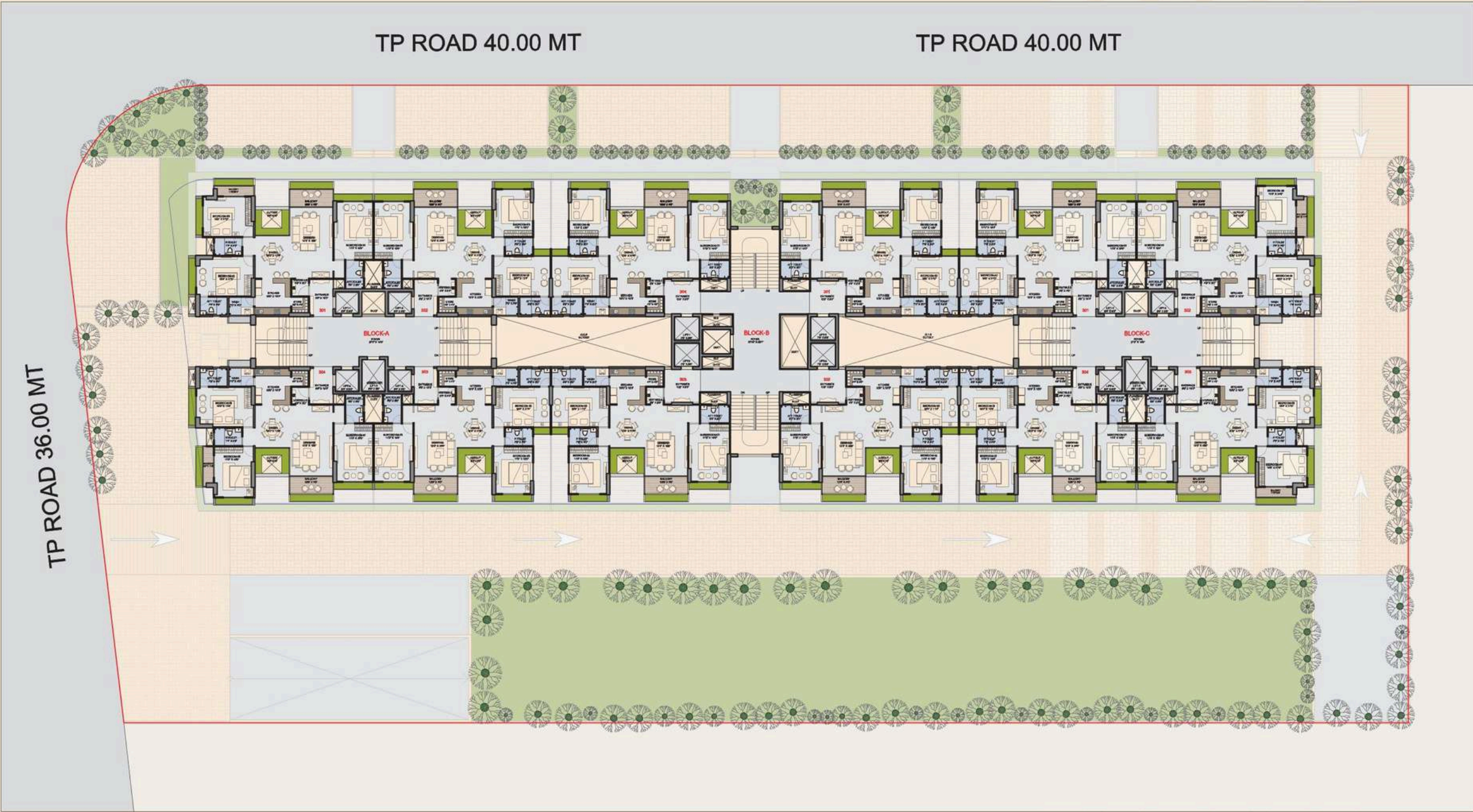
First Floor Layout



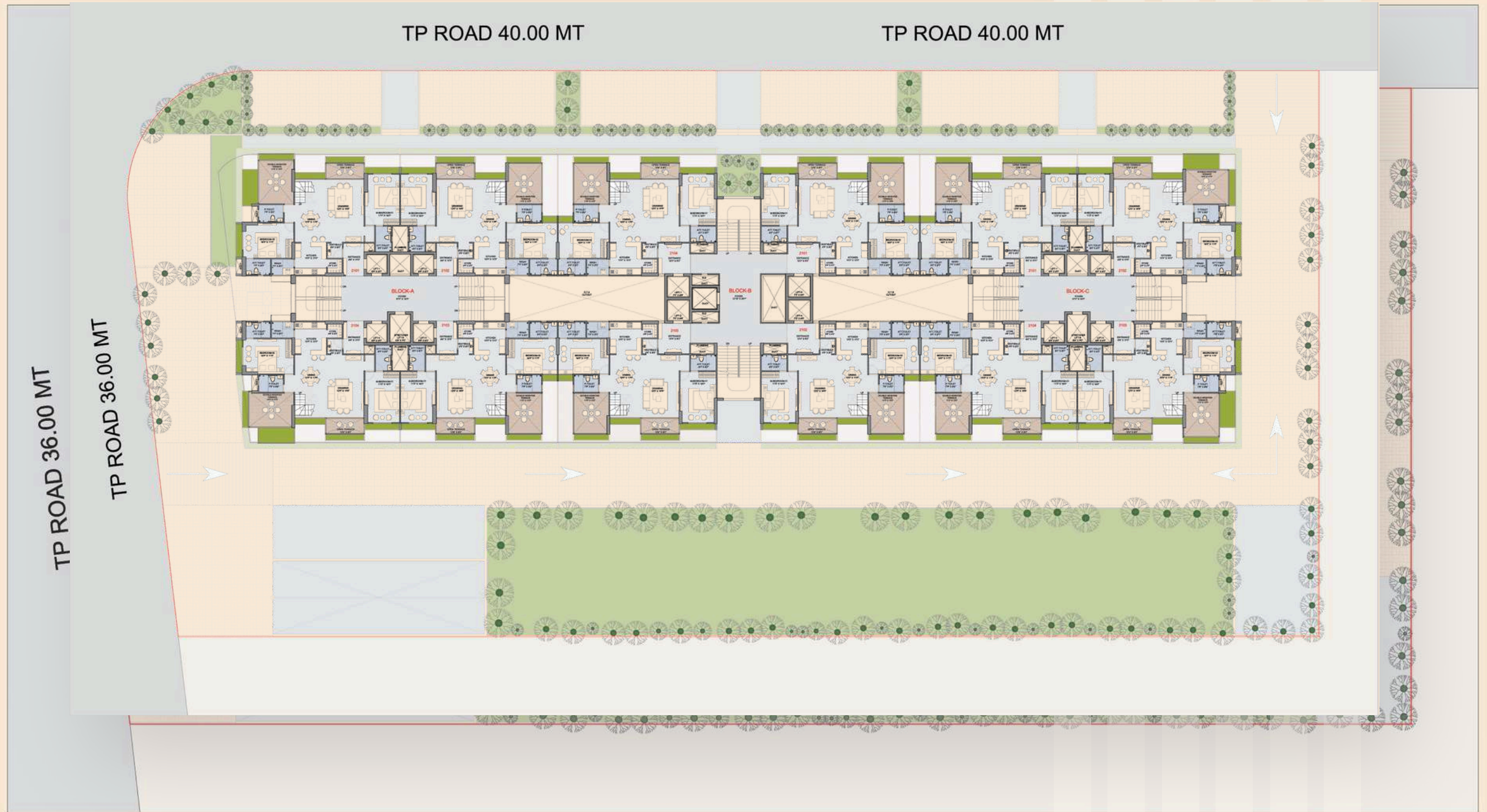
Typical Floor Layout (Type - 01) (Even Floor)



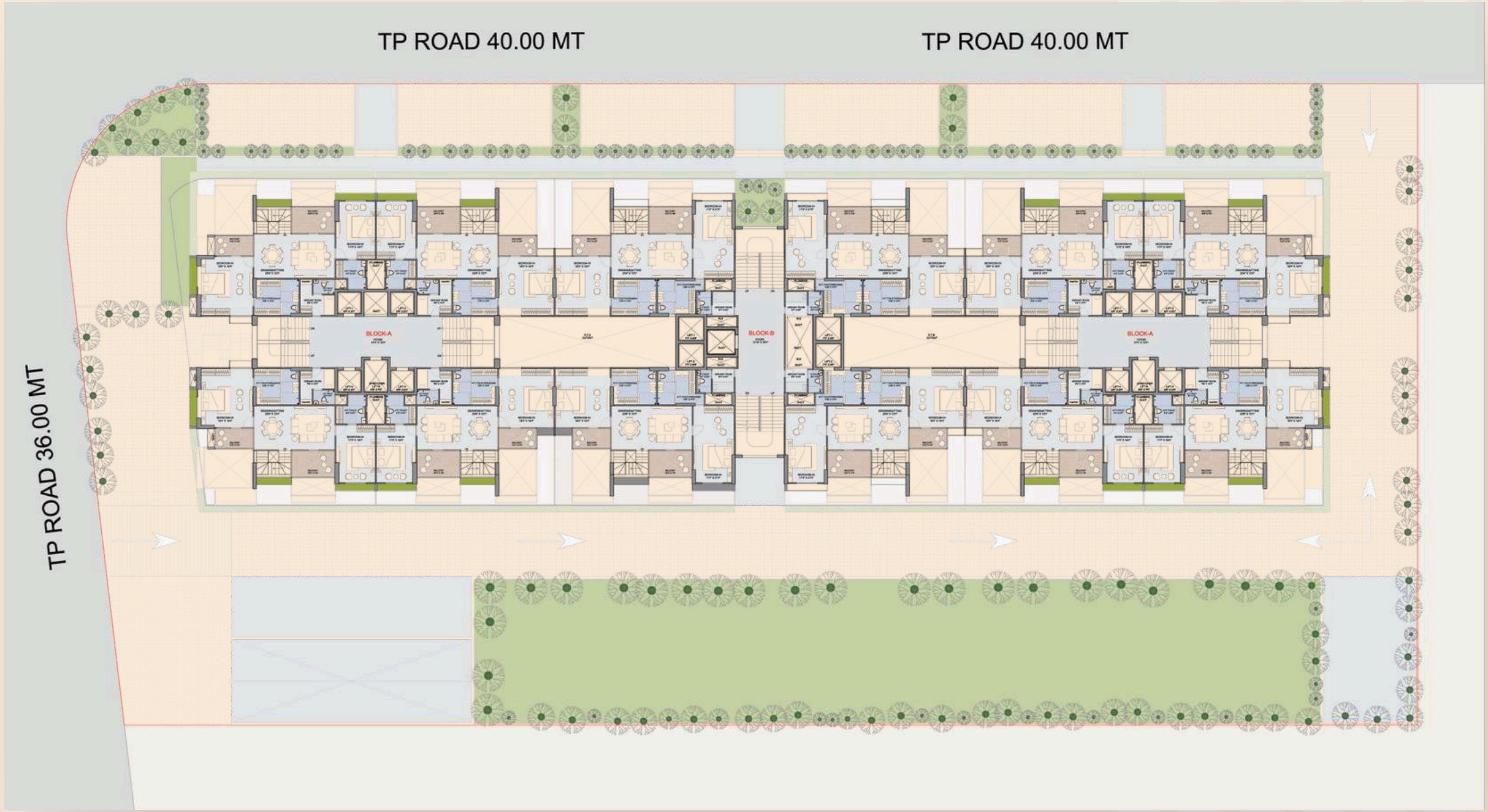
(Type - 02) (Odd Floor)



21st Floor Layout (Lower Penthouse)



22nd Floor Layout (Upper Penthouse)





Block - A Unit 104

3 BHK | First Floor





Block - A Unit - 103

3 BHK | First Floor



Block - B Unit - 103

3 BHK | First Floor





Block - C Unit - 103

3 BHK | First Floor





Block - A Unit - 204

3 BHK
Typical Even No. Floor





Block - A Unit - 203

3 BHK
Typical Odd No. Floor





Block - B Unit - 203

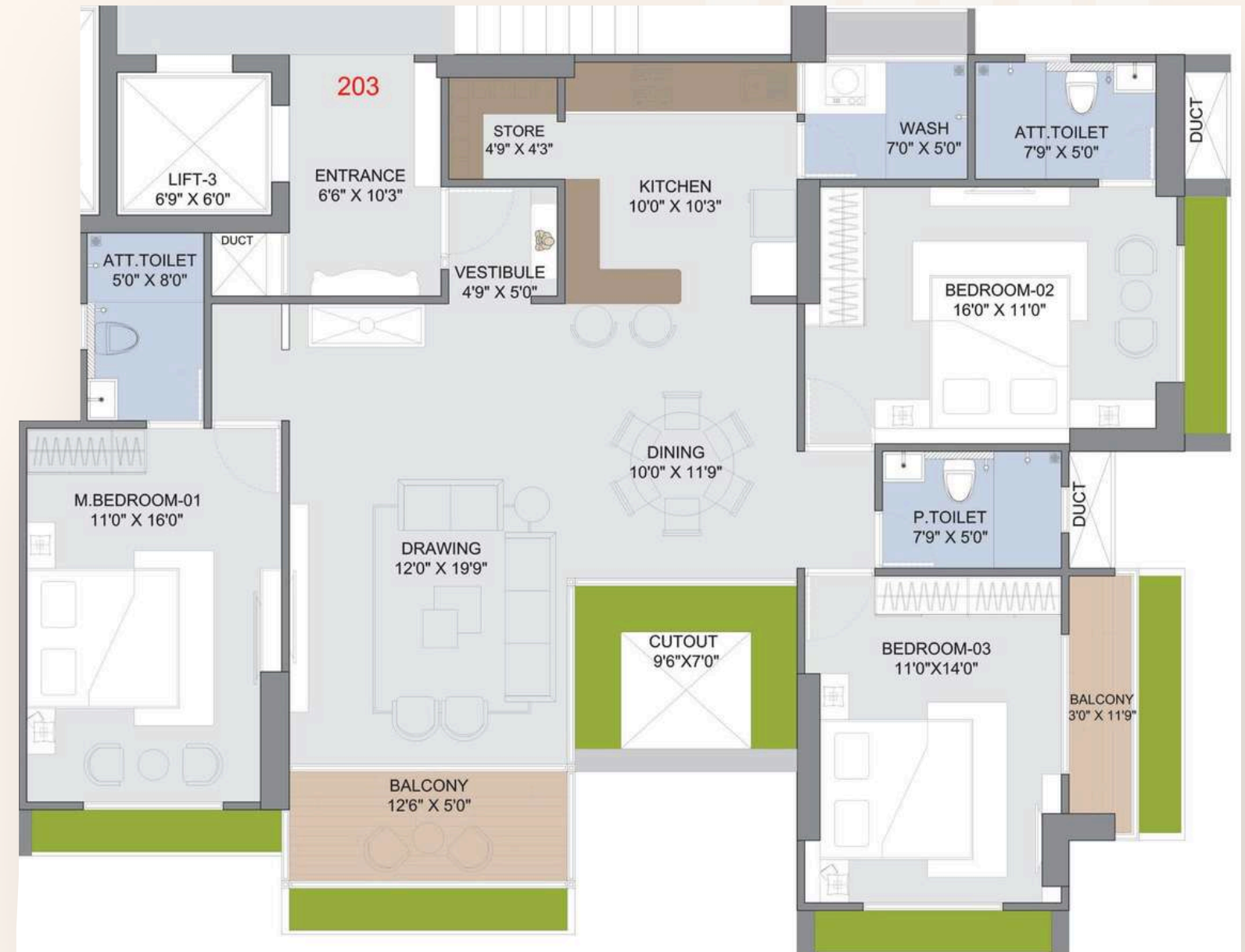
3 BHK
Typical Odd No. Floor





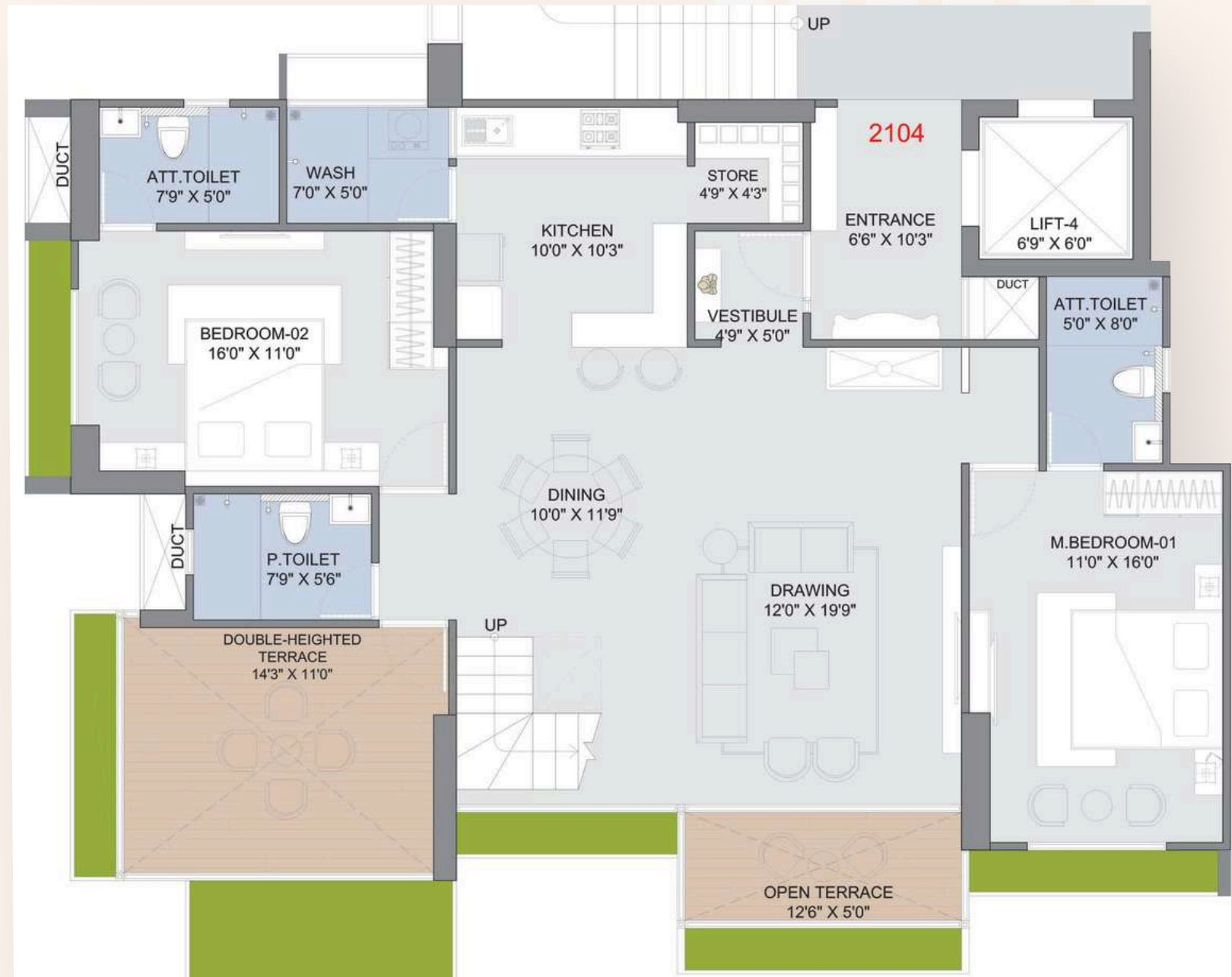
Block - C Unit - 203

3 BHK
Typical Odd No. Floor



Block - A Unit - 2104

4 BHK | Lower Penthouse



Block - A Unit - 2204

4 BHK | Upper Penthouse





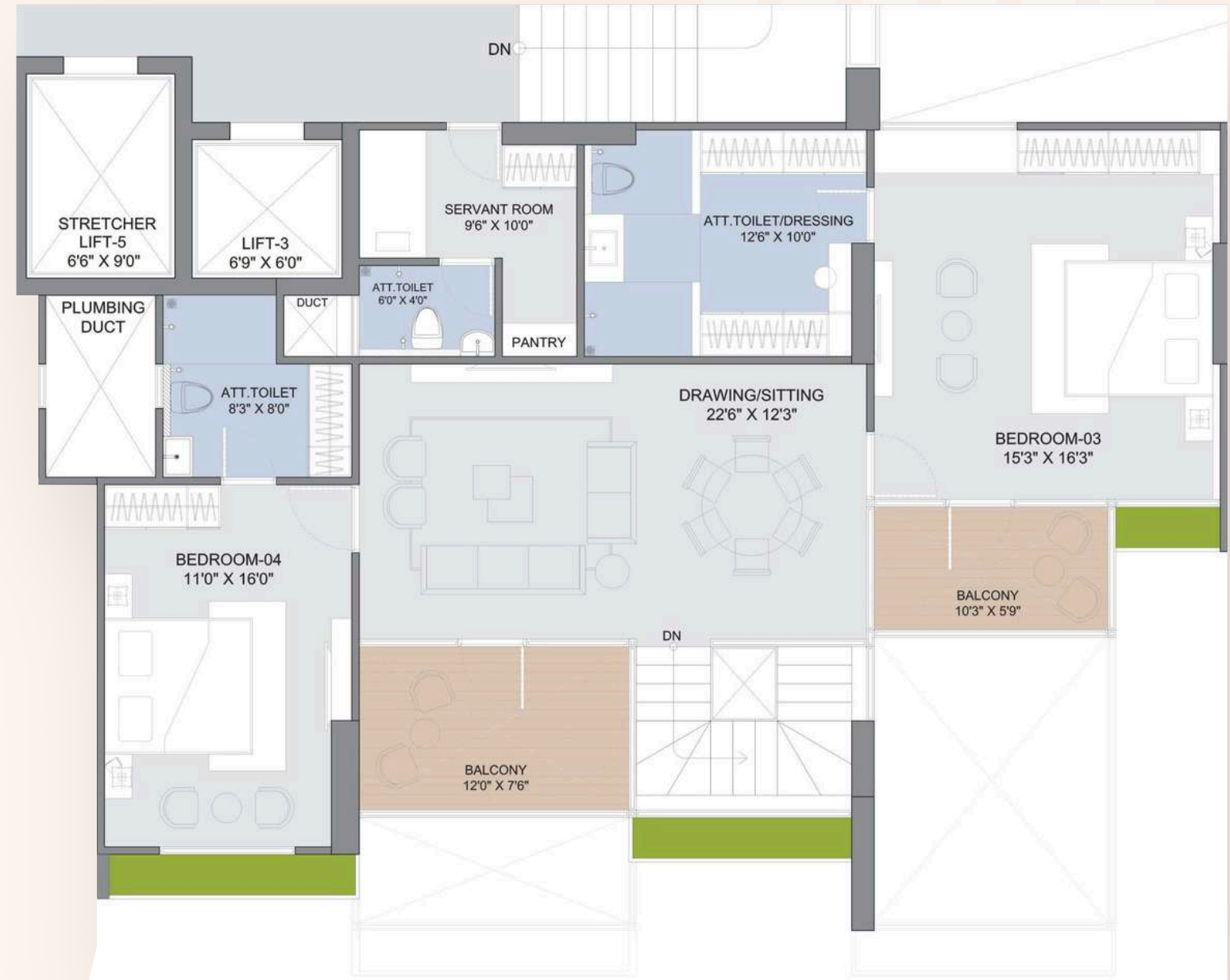
Block - A Unit - 2103

4 BHK | Lower Penthouse



Block - A Unit - 2203

4 BHK | Upper Penthouse



Block - B Unit - 2103

4 BHK | Lower Penthouse



Block - B Unit - 2203

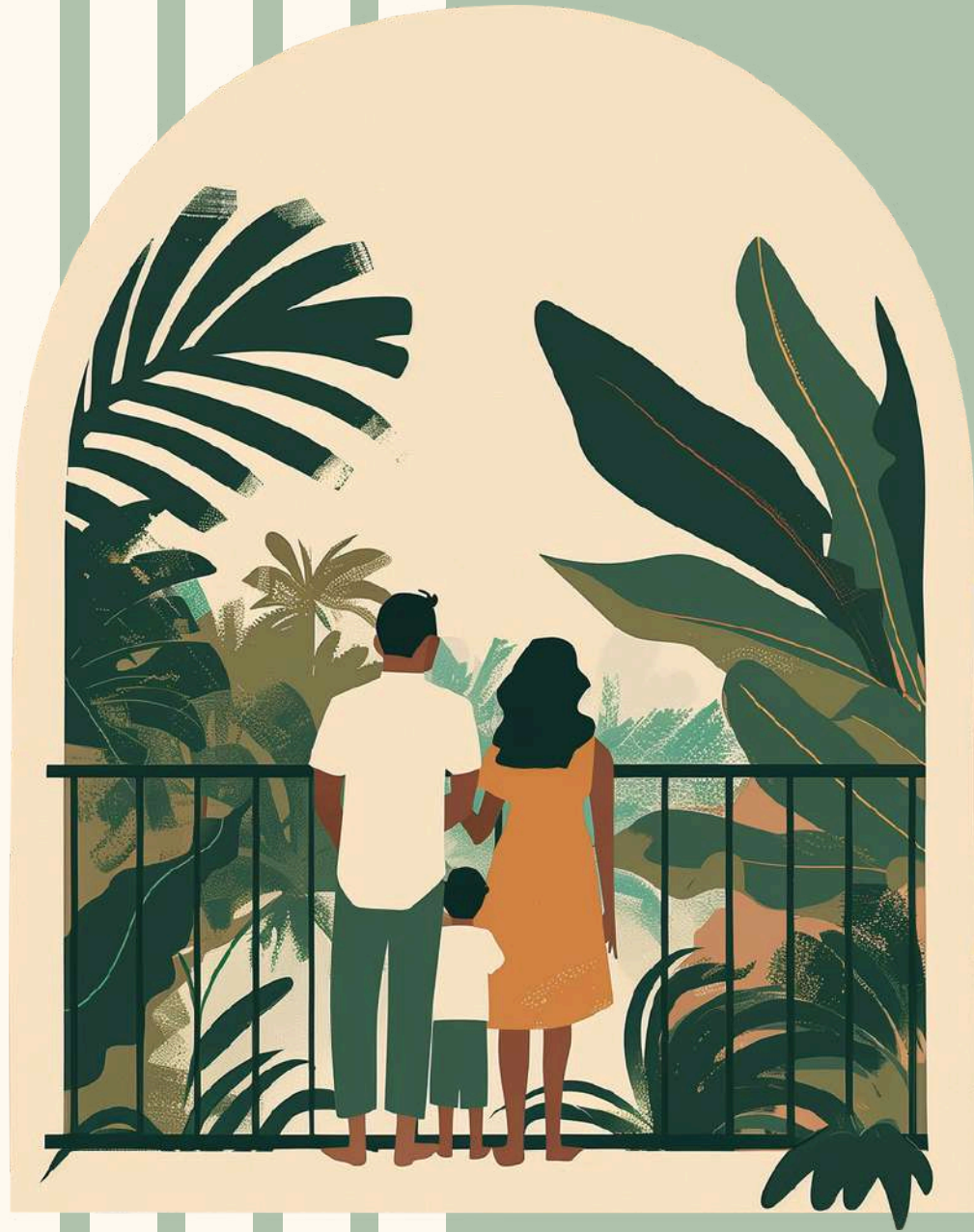
4 BHK | Upper Penthouse





Abundant Accessibility To Connect & Collaborate

Located strategically between Shilaj Circle and Science City, the Science Park area of Ahmedabad is rapidly emerging as a premium residential and commercial hub. This upcoming locale is distinguished not only by its prime location but also by the promise of significant rate appreciation, making it a savvy investment for prospective homeowners and investors alike. Its strategic positioning ensures seamless connectivity to major landmarks and essential services, blending the tranquility of suburban life with the convenience of urban accessibility. With three ongoing projects in the vicinity and more slated for the future, A. Shridhar Group is committed to developing this area just as they uplifted Shilaj.



Abundant Personalization

For Today & Tomorrow



At A. Shridhar, our mission is to infuse abundant personalization into every project. Founded to set a benchmark in Ahmedabad's construction industry, we stand on ethics, quality, and transparency. With over two decades of experience in land and infrastructure development, we bring technical, strategic, and commercial expertise to each endeavor. Our unwavering commitment to on-time delivery, transparency, and customer satisfaction drives us. Every A. Shridhar project is fueled by innovation and built on powerful values, ensuring a personal touch and excellence in every venture.

