



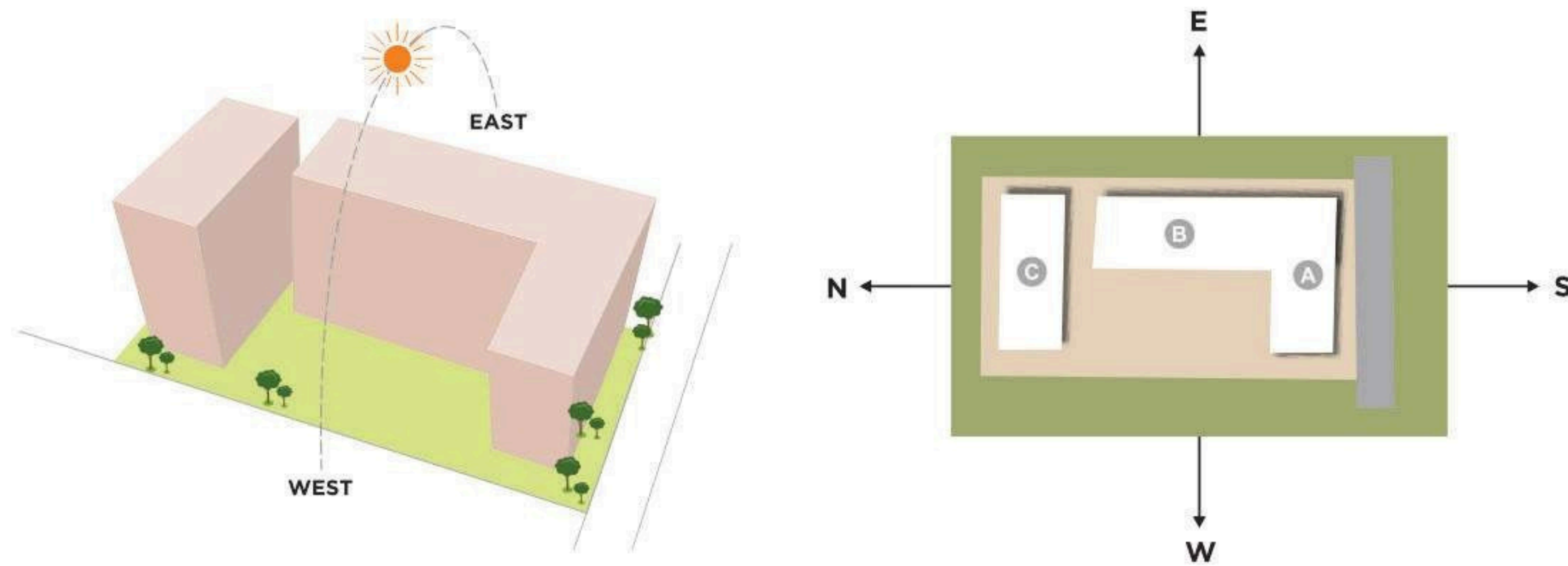
**ADDOWN REALTY**  
— Connecting You To Your Perfect Property —

**4 BHK & 5 BHK DUPLEX APARTMENTS**

*a nature community*

*Only*  
**77**  
*Family*

## SENSIBLY DESIGNED



The towers are intelligently placed in such a way that each apartment enjoys uninterrupted views of its serene surroundings at the same time every apartment gets ample sunlight and air ventilation.

## PROJECT HIGHLIGHTS

**14 STOREY TOWERS**

**VASTU COMPLIANT APARTMENTS ENTRY**

**GRAND FOYER AREA**

**LANDSCAPED TERRACE GARDEN**

**SPACIOUS BALCONY IN ALL FLATS**

**ALLOTTED PARKING SPACE**

**WELL CONNECTED PRIME LOCATION**

4 & 5 bhk distinctive living





---

# A WORLD OF ABSOLUTE HAPPINESS

---

Welcome to a residence that's both exquisite and functional.  
It's time to embrace a dazzling new world where each day  
begins with hope and joy.





A SYMPHONY OF  
MODERN LUXURIES



- |   |   |
|---|---|
|  ENTRANCE GATE                         |  SECURITY CABIN                        |
|  CLUB HOUSE                            |  BANQUET HALL                          |
|  TODDLER PLAY AREA                     |  GYMNASIUM                             |
|  INDOOR GAMES                         |  KIDS' PLAY AREA                      |
|  PICK UP & DROP OFF ZONE             |  CAR PARKING                         |
|  VIDEO DOOR PHONES                   |  CCTV SURVEILLANCE                   |
|  SOCIETY ADMIN OFFICE                |  PARTIAL SOLAR PANEL FOR COMMON AREA |
|  24 X 7 POWER BACKUP FOR COMMON AREA |  EXPERIENTIAL WALKWAY                |
|  CELEBRATION LAWN                    |  MINI THEATER                        |
|  BOX CRICKET PITCH                   |  LIBRARY & WORKSTATION               |



---

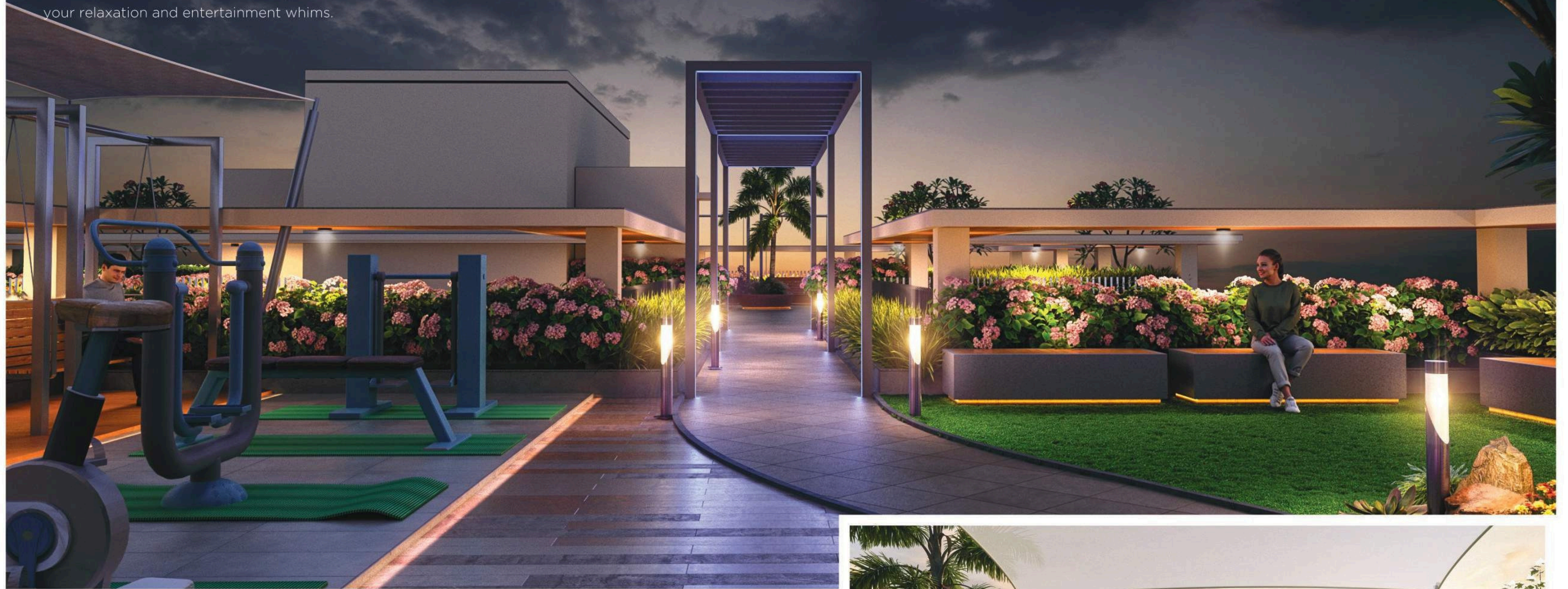
## SPECTACLE OF GORGEOUS GREENS

---

Everywhere you look soothing,  
green landscapes await you.  
Such a captivating sight.

# DESIGNED FOR THE ELITE YOU

State-of-the-art clubhouse catering to all your relaxation and entertainment whims.



CAFÉ WITH INTERNET



PARTY FUNCTION LAWN



FLOWER BEDS



SEATING AREA



OUTDOOR GYM



WALKWAY WITH PERGOLA



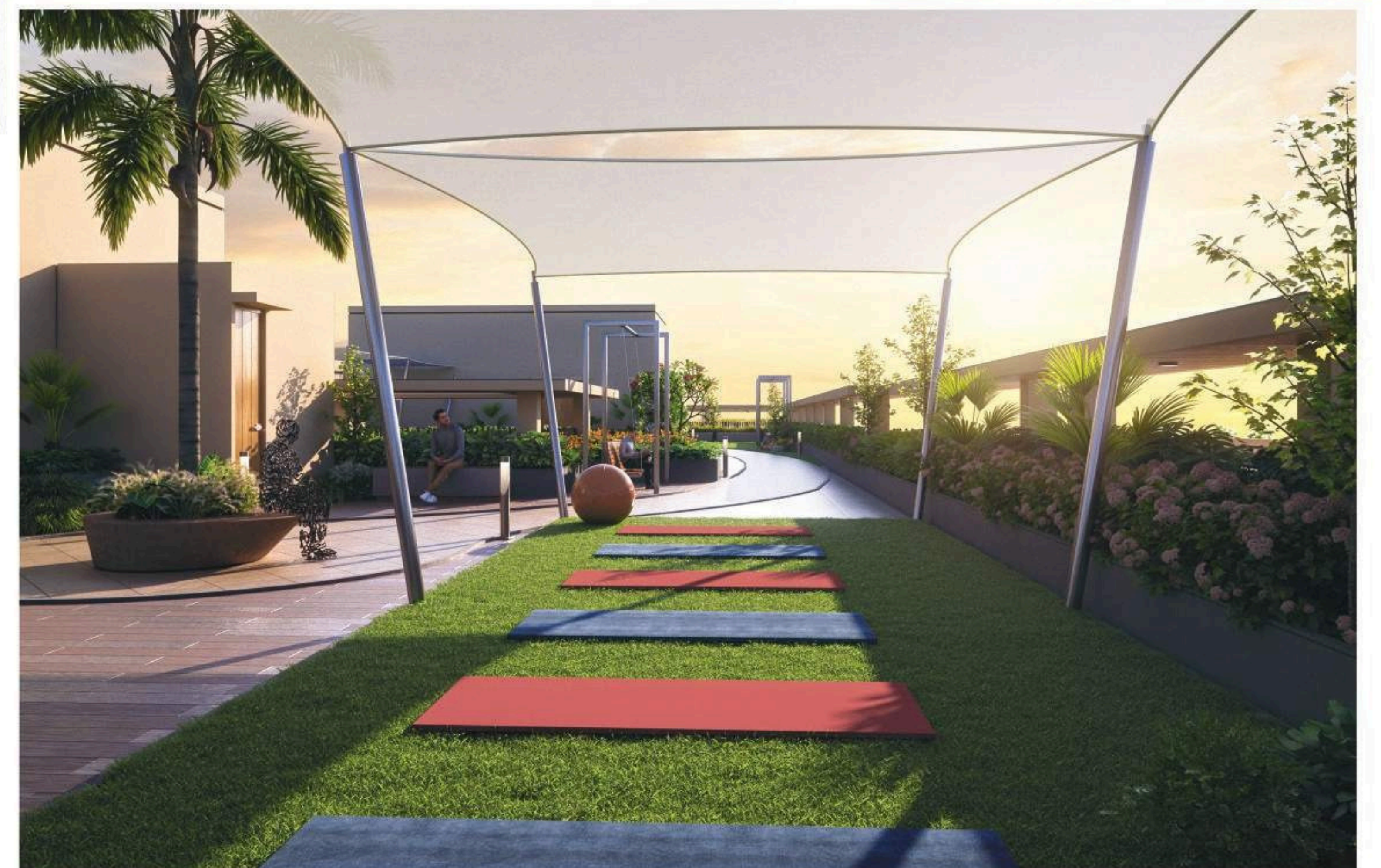
SKATING RING



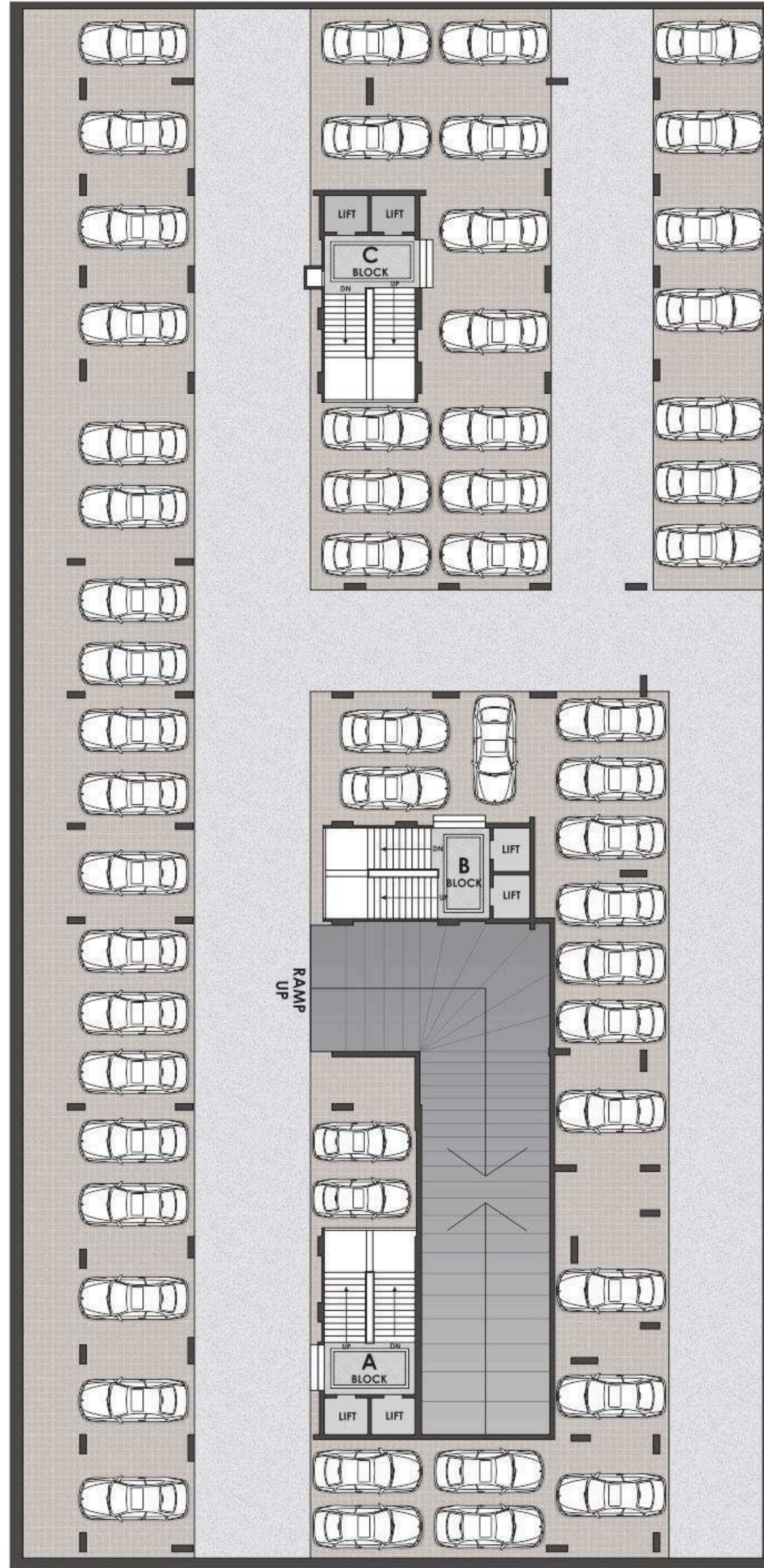
YOGA / MEDITATION AREA



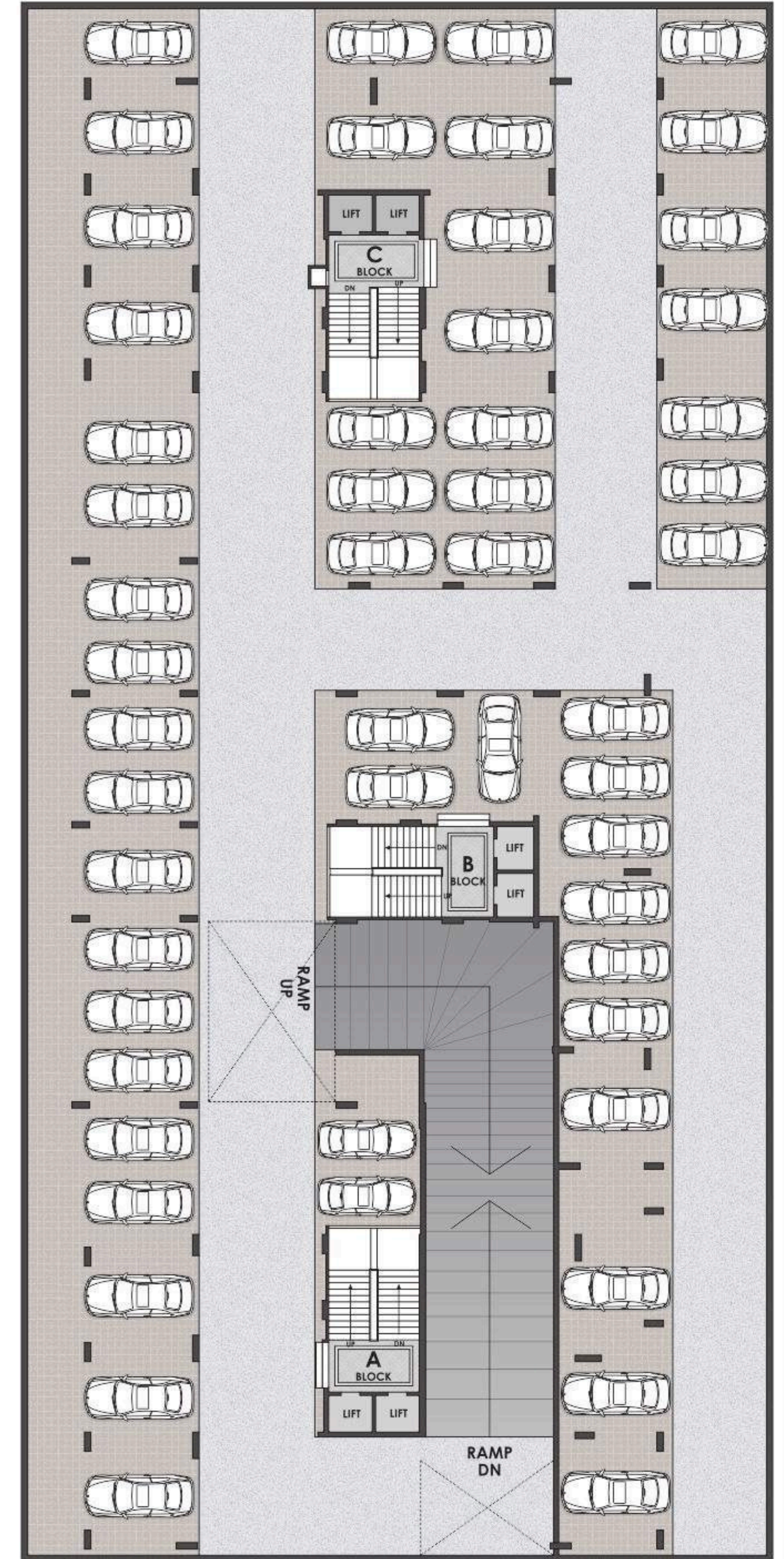
HOPSCOTCH / SNAKE & LADDER GAME



2<sup>nd</sup> BASEMENT  
PLAN



1<sup>st</sup> BASEMENT  
PLAN



# GROUND FLOOR PLAN



## LEGEND

- 01 ENTRANCE GATE
- 02 SECURITY CABIN
- 03 DROP OFF ZONE
- 04 RAMP IN / OUT
- 05 SOCIETY OFFICE
- 06 KITCHEN & WASH AREA
- 07 BANQUET HALL
- 08 ELECTRIC METER ROOM
- 09 ENTRANCE FOYER
- 10 TWO WHEELER PARKING
- 11 SEATING AREA
- 12 STORE ROOM
- 13 GYMNASIUM
- 14 GAZEBO WITH SEATING
- 15 WATER BODY
- 16 LARGE CELEBRATION LAWN
- 17 CHILDREN PLAY AREA
- 18 CANTILEVER SEATING AREA
- 19 BOX CRICKET PITCH
- 20 TODDLER PLAY AREA
- 21 INDOOR GAMES
- 22 LIBRARY / WORK STATION
- 23 MINI THEATER



# TYPICAL FLOOR PLAN

( 1, 3, 5, 7, 9, 11, 13 )



4 BHK APARTMENT

5 BHK DUPLEX APARTMENT



# TYPICAL

FLOOR PLAN

( 2, 4, 6, 8, 10, 12, 14 )



 4 BHK APARTMENT

 5 BHK DUPLEX APARTMENT



# TERRACE

FLOOR PLAN



## LEGEND

- 01 PALM SEATING AREA
- 02 SKATING RING
- 03 SKY CAFÉ
- 04 PANTRY
- 05 TOILET
- 06 WALKWAY WITH PERGOLA
- 07 SEATING AREA
- 08 OUTDOOR GYM
- 09 HOPSCOTCH / SNAKE & LADDER GAME
- 10 YOGA / MEDITATION AREA
- 11 PARTY FUNCTIONAL LAWN



From a cup of morning tea to late night chit chats, this spacious balcony is the place where you would always want to be.

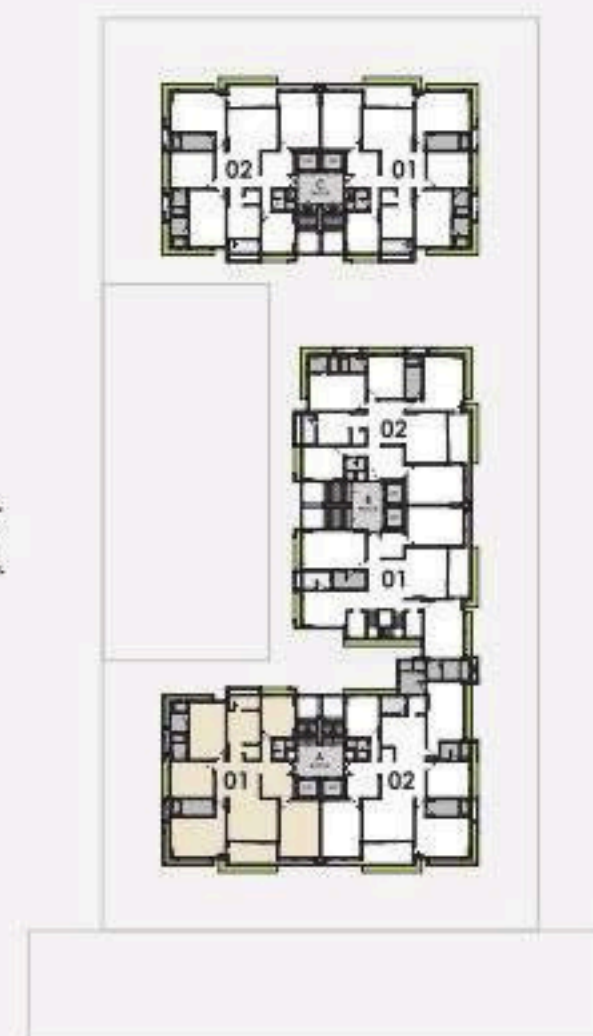




**4** BHK  
UNIT FLOOR PLAN



A BLOCK



**4** BHK  
UNIT FLOOR PLAN



A BLOCK





LIVING ROOM & DINING AREA

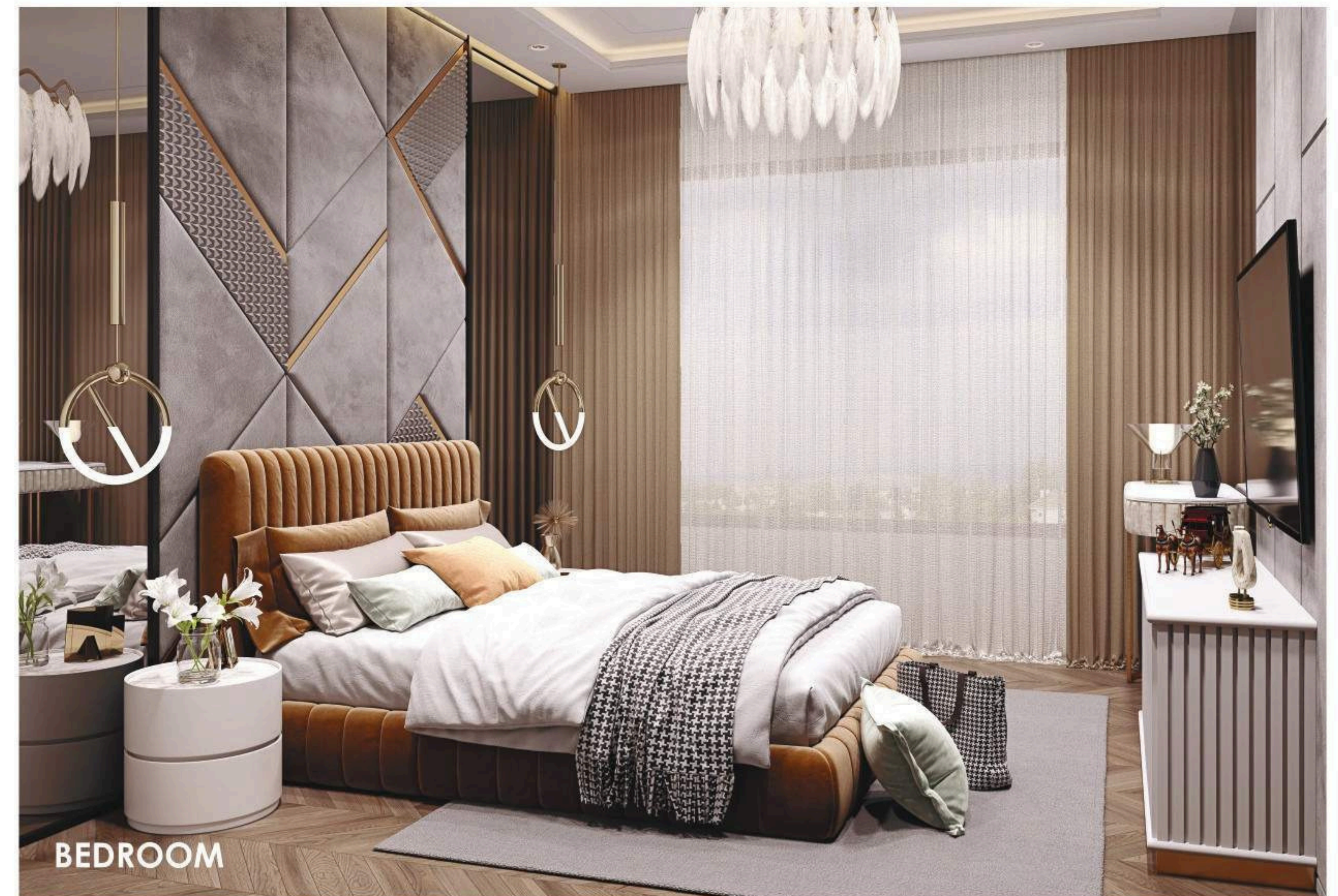
BACKDROP FOR  
ALL PRECIOUS MOMENTS



KITCHEN



BEDROOM



BEDROOM



**5 BHK**  
 DUPLEX UNIT FLOOR PLAN



LOWER LEVEL



**B** BLOCK

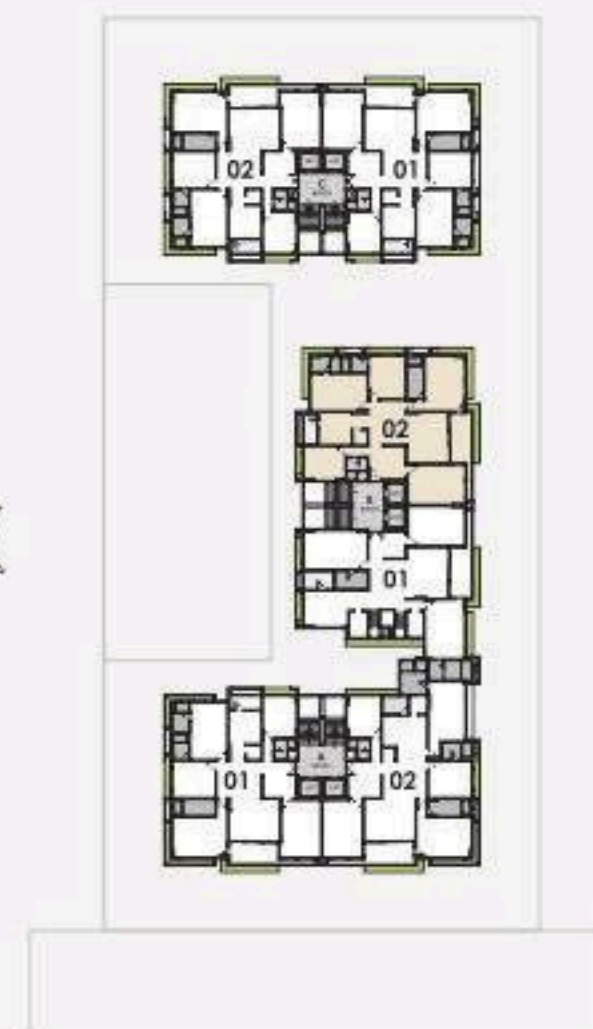
UPPER LEVEL



**4 BHK**  
UNIT FLOOR PLAN



**B** BLOCK



**4 BHK**  
UNIT FLOOR PLAN



**C** BLOCK





# Specifications



## STRUCTURE

- RCC : Earthquake resistant frame structure
- Masonry : AAC Block (External -125 mm thk. Internal -100 mm thk.)
- Plaster : Internal - Single coat mala plaster / exposed RCC finish  
External - Double coat texture plaster



## FLOORING

- Living / Kitchen & Bedrooms : Vitrified tiles (1200 x 1800 / 800 x 1600)
- Balcony : Vitrified wooden finish (1200 x 200)
- Utility : Semi polished kota stone
- Foyers & Stairs : Granite flooring
- Bathroom : Floors - Vitrified matt finish (600 x 600)  
Wall - Vitrified glossy (600 x 1200)



## DOORS & WINDOWS

- Main Door : 35 mm Thick flush door with veneer on both faces
- Other Doors : 30 mm Thick flush door
- Windows : Powder coated aluminium window with stone jaming



## TOILET

- CP Fittings : Hansgrohe / Grohe or equivalent
- Sanitary Ware : Vitra / Duravit / Toto or equivalent
- Plumbing Piping : Ashirvad / Astral or equivalent



## ELECTRIFICATION

- Concealed wiring : Polycab / Havells / Finolex / R R Kabel or equivalent
- Modular switches : Schneider / Anchor or equivalent
- MCB distribution panel : Schneider / Havells or equivalent
- Electrical connection : 3 Phase



## COLOUR

- Internal : Putty finish (Birla white or equivalent)
- External : Different architectural textured finishes with acrylic paints



## WATER PROOFING

- Brickbat coba water proofing in all sunk slab
- China mosaic / Ceramic tiles water proofing on terrace

## GENERAL

- Lift : Machine less automatic lift (MRL)
- Internal Roads : Trimix R.C.C Road with paver Blocks
- Parking : Hollow Plinth with Paved Parking

**NOTES :** • Developer reserve all the rights for any changes in plan, elevation, specification, amenities and other details were in to comply with statutory regulations and shall be binding to all the members. • Any Gov. Duty like GST and any other tax applicable from time to shall be charged extra at actual. • In the event of cancellation of unit for any reason by client, 10% of the basic amount of the unit shall be deducted and balance amount shall be refunded after booking of the same unit. • This brochure is only for advertisement and it shall not be treated as part of legal document. • Changes / Alteration of any nature by member in external elevation and which are affecting the design of the structure shall not be permitted during and after completion of the scheme. • In case of any dispute Ahmedabad court shall prevail.