



ADDOWN REALTY
— Connecting You To Your Perfect Property —

Experience
the aura you
manifested.

ENERGY
EFFICIENT
TOWARDS
SUSTAINABILITY



SOLAR
PANEL



MAXIMUM
VENTILATION



SMART
LIFE

Enrich your aura

with architectural magnificence
that bestows tranquility



EMPOWERED BY
BEAMS OF SUN



Nestled amidst lush greenery, Aura offers an oasis of calm in the heart of the city. With its stunning architecture, thoughtful design and breathtaking views, Aura is a dream come true for those seeking a luxurious and comfortable lifestyle. Experience the joy of living in a serene and peaceful environment, while enjoying the best of urban amenities with the perfect blend of serenity and modern living.



Embrace blissful aura

with the perfect ambience for soulful serenity



GREEN. SIMPLE. SMART





Embody vibrant aura

with beautiful vicinity for a benevolent lifestyle



MODERN LIFE STYLE
WITH NATURAL TOUCH





A tall, modern apartment building with a dark brown facade. The building features a central vertical stack of balconies with plants, flanked by two main wings of balconies. Each balcony has a dark railing and a small window. The building is set against a twilight sky with soft clouds. The ground floor is a retail space with large glass windows and doors.

Ground floor retail space with the following store names: Jini & Jony, Spykar, Levi's, MAX, Reebok, Truma, Titan, and Raymond.

A Life

with exclusive urban amenities
that orchestrate comfortable living



ALLOTTED CAR
PARKING



CCTV CAMERA
SURVEILLANCE



24 HOURS
WATER SUPPLY



ATTRACTIVE
FOYER



SOLAR SYSTEM FOR
COMMON AREA



CHILDREN PLAY AREA



GAZEBO



SECURITY CABIN



AUTOMATED BOOM
BARRIER AT GATE



POWER BACKUP



TERRACE GARDEN



FIRE SAFETY



GYM



GAS PIPELINE



DTH CONNECTION



SENIOR CITIZEN
AREA



PASSENGER LIFT &
STRETCHER LIFT WITH
POWER BACKUP



WIFI ZONE



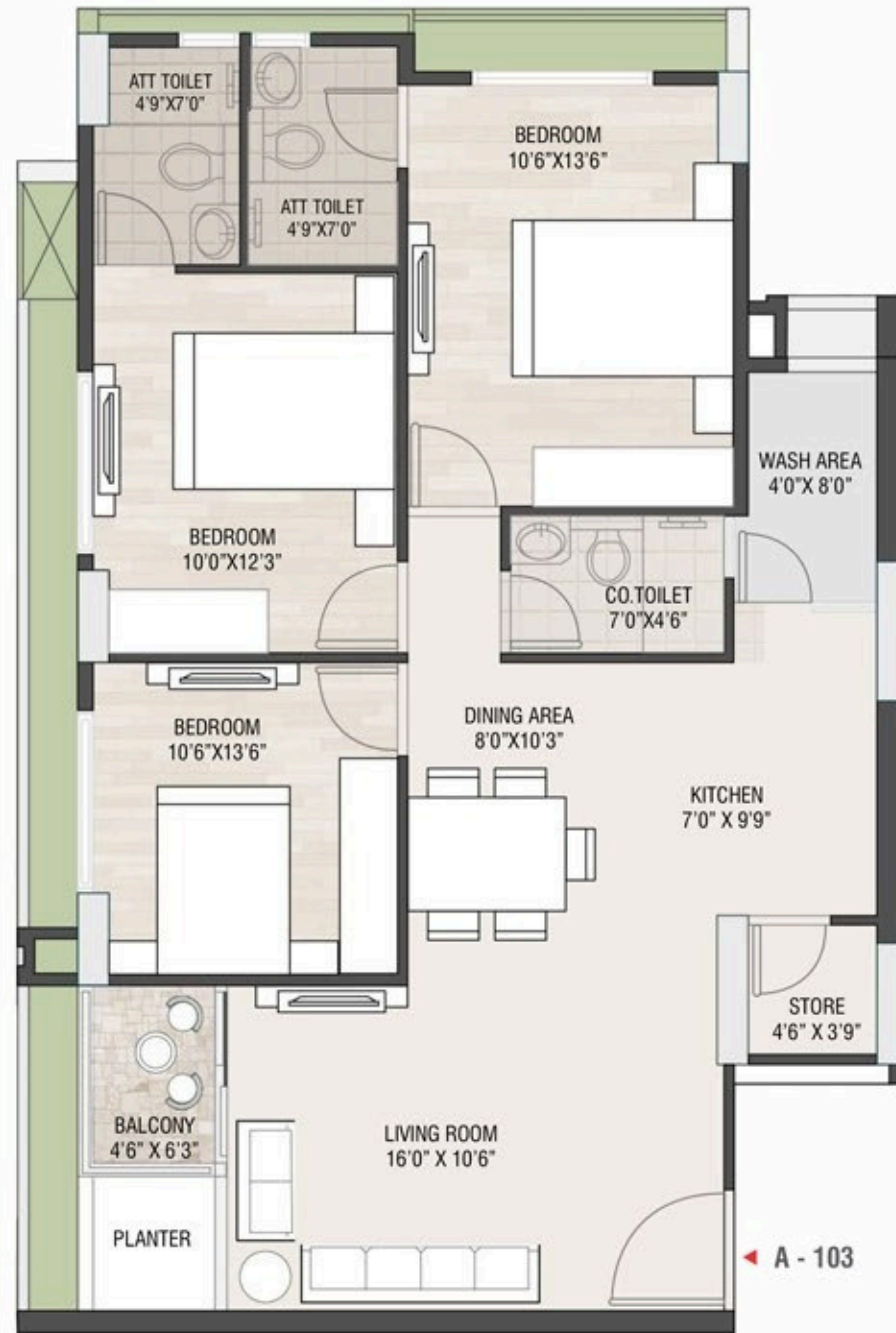




 Ground Floor



 Typical Floor



BLOCK - A
3 BHK UNIT PLAN



BLOCK - A
3 BHK UNIT PLAN

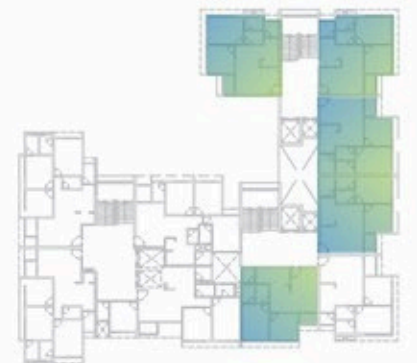




BLOCK - A
3 BHK UNIT PLAN



BLOCK - B&C
3 BHK UNIT PLAN





BLOCK – B&C
2 BHK UNIT PLAN



S
P
E
C
I
F
I
C
A
T
I
O
N
S

STRUCTURE

Earthquake resistance R.C.C. frame structure.

WALL

All internal walls will be finished with putty over mala plaster.
All external wall will be finished with double coat mala plaster with texture finish.

PLUMBING

Concealed plumbing with premium quality pips and fittings for continuous water supply, a common borewell.

FLOOR FINISH

Premium quality designer vitrified tiles in drawing room dining area with kitchen and all bedroom area.

ELECTRIFICATION

Concealed copper flexible wiring with adequate number of electrical points & branded modular switches. TV point drawing room & AC points two bedrooms.

KITCHEN

Ready to use granite finished platform with SS sink, Designer glazed tiles with dado up to beam level. Plumbing and electrical provisions for water purifier & washing machine, stones in store room.

DOORS & WINDOWS

Attractive entrance doors with standard safety lock & other decorative fitting.

TOILETS

Fully glazed designer tiles on bathroom walls upto the lintel level and colour coordinated sanitary ware.

TERRACE

Open terrace finished with suitable proofing with China mosaic flooring for heat reflection.