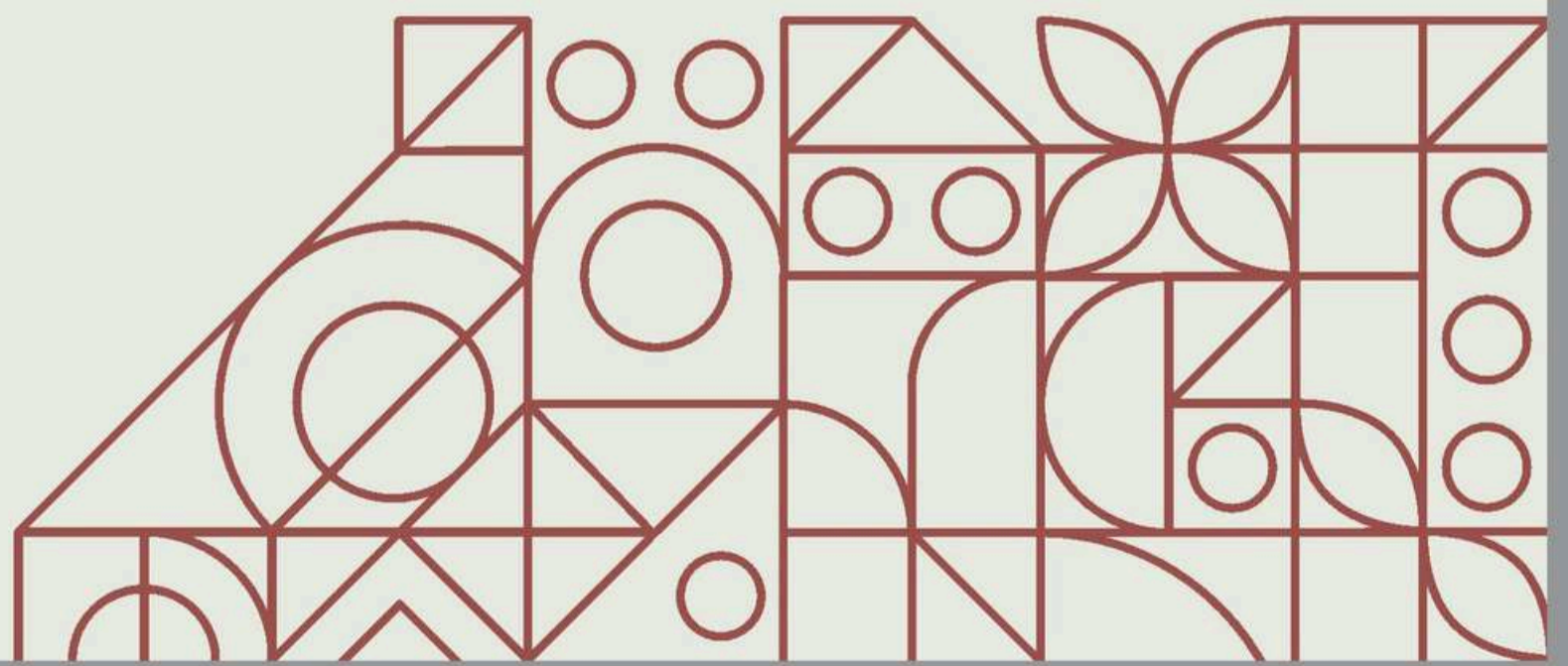


9.25 in



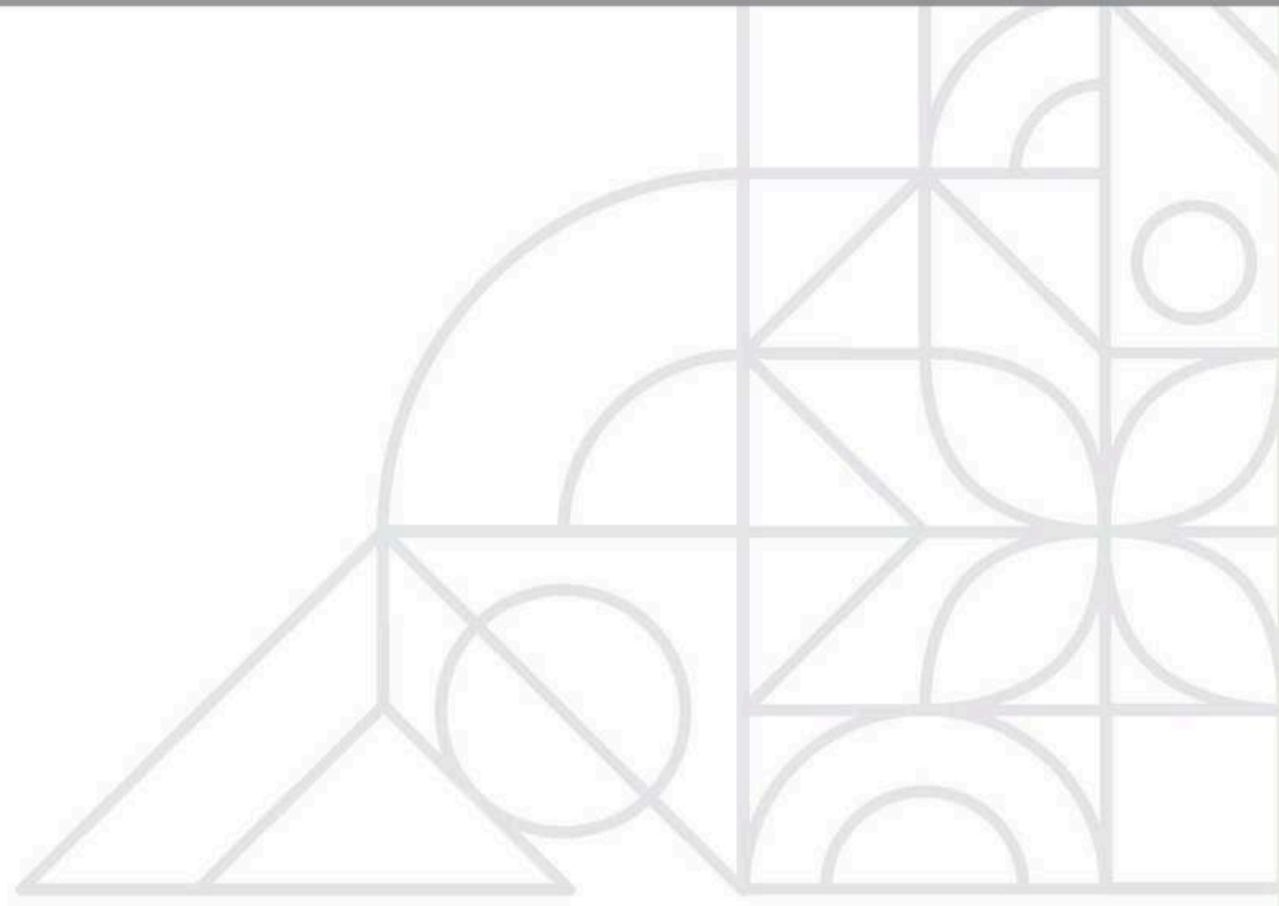
ADDOWN REALTY

— Connecting You To Your Perfect Property —



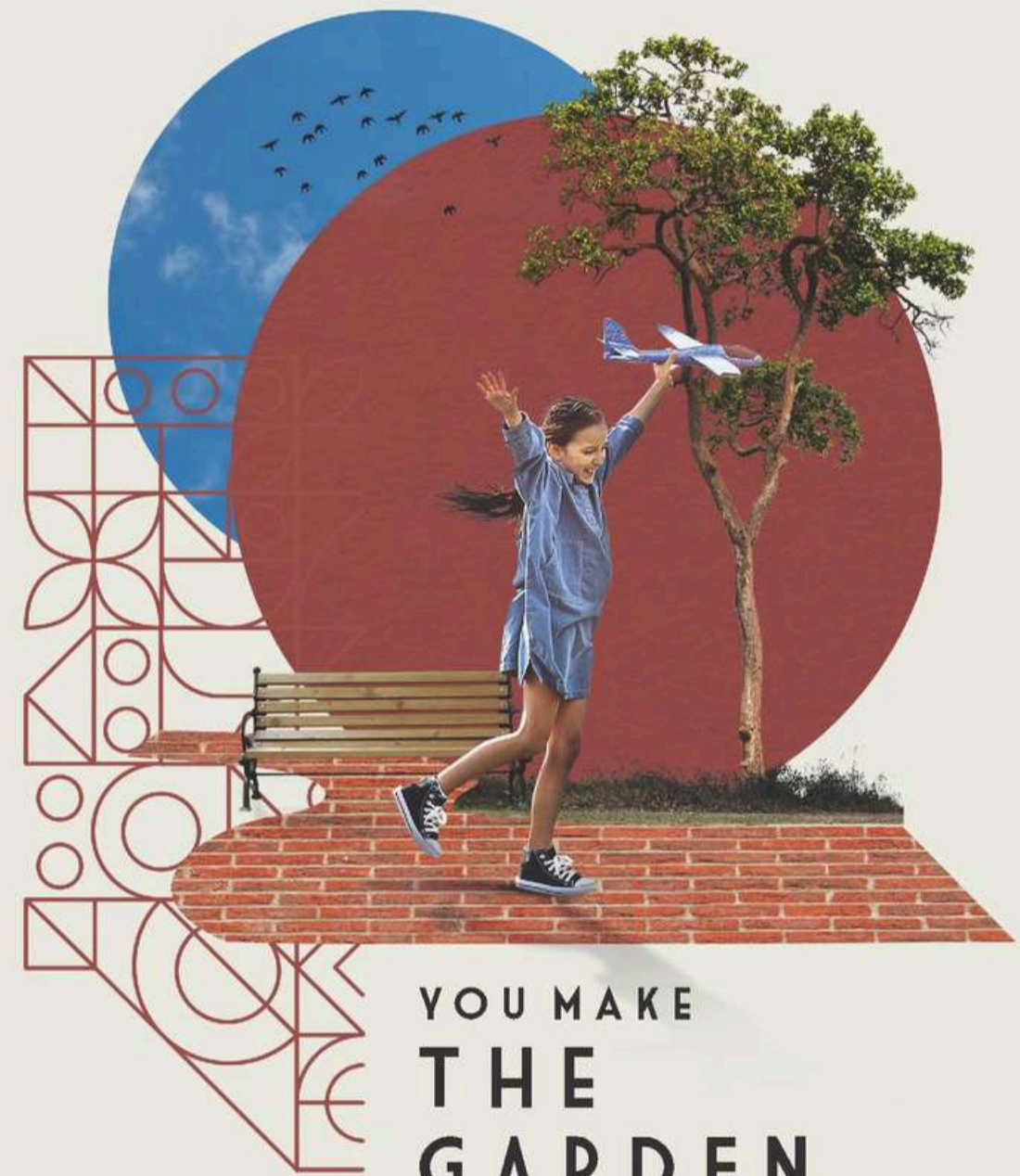
13.50 in





Children are the bounties of joy that add radiance and bliss to any space. Let them frolic and spread the euphoria across the landscaped gardens that are part of the amenities provided here at Luxuria adding to the abundance of the lavish property.

UNIQUE
LUXURIA

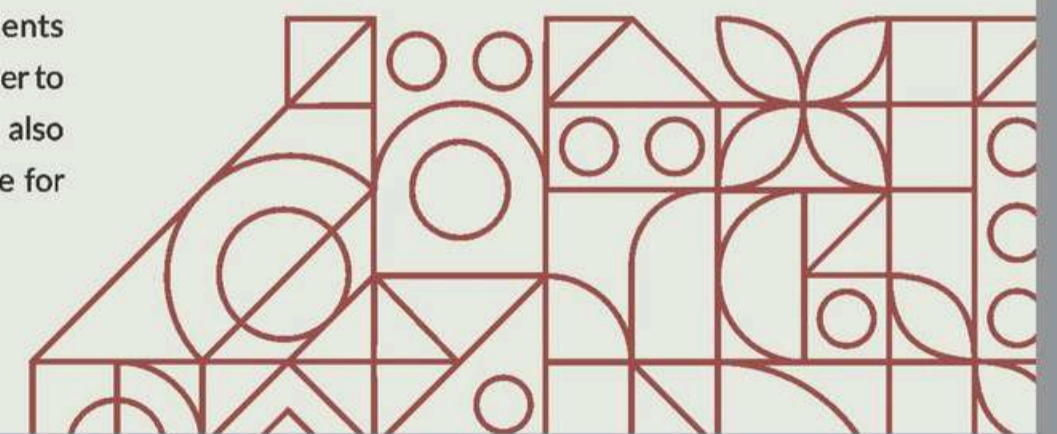


YOU MAKE
**THE
GARDEN
LUXURIOUS**



RESTORE CONNECTIONS TO
**JOYFUL AND NATURAL
LIVING**

Laid-out landscaped gardens offer endless benefits ranging from bringing residents closer to nature, getting everyone together to better know each other. These spaces also help foster a brighter and greener future for the children.



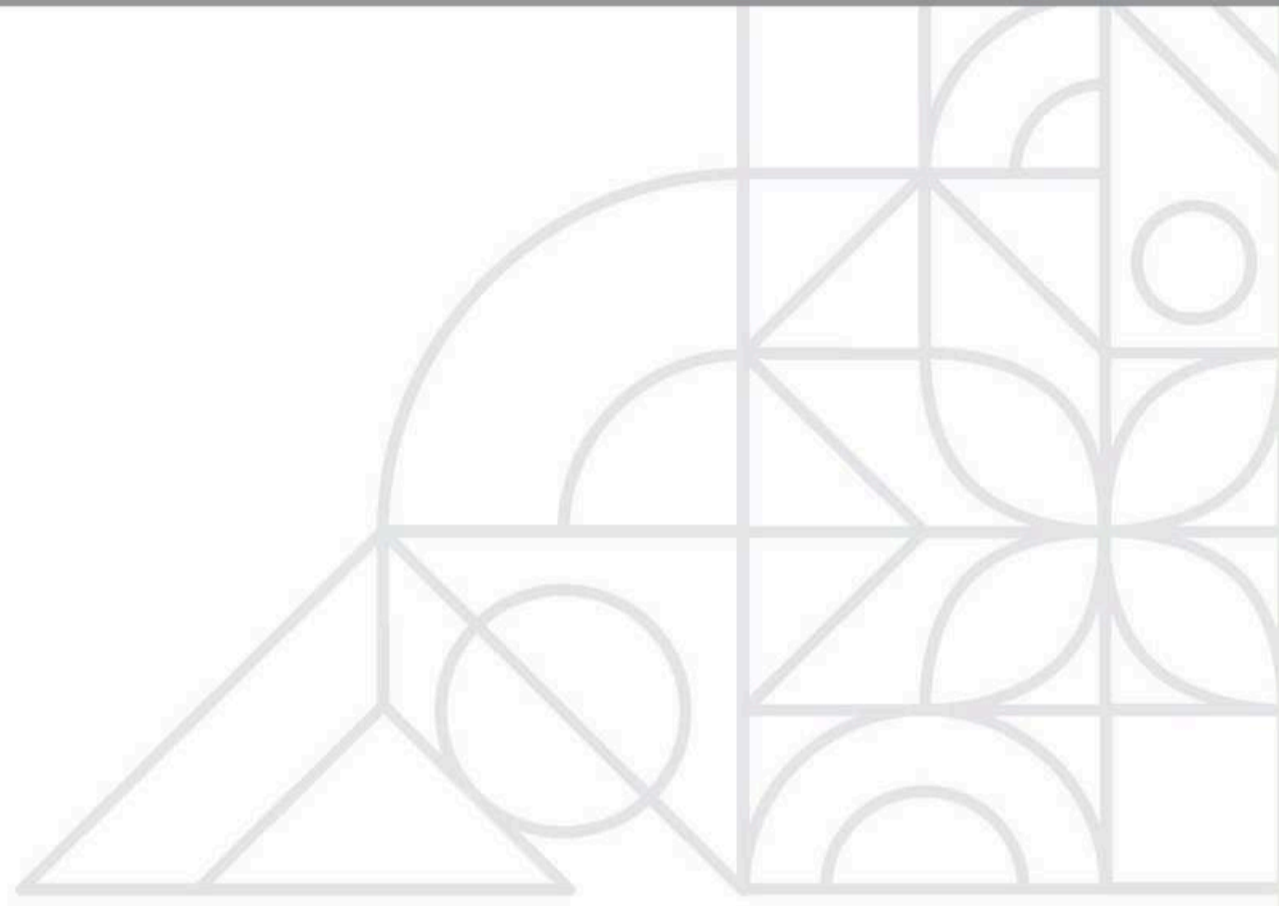


YOU MAKE
THE
GYMNASIUM
LUXURIOUS



Fatherhood can be an amazing journey but being the breadwinner can make it harder to find time for exercise. Fathers can identify ruts in their personal health and add the spectacle to the fully equipped and hygienic workout zones at Luxuria for a healthier long-term future.





Kids love being in and around water and merriment amplifies near the pool area. The splendid swimming pool at Unique Luxuria is guaranteed to swoon and rejuvenate the residents on dreadful summer days.

UNIQUE
LUXURIA

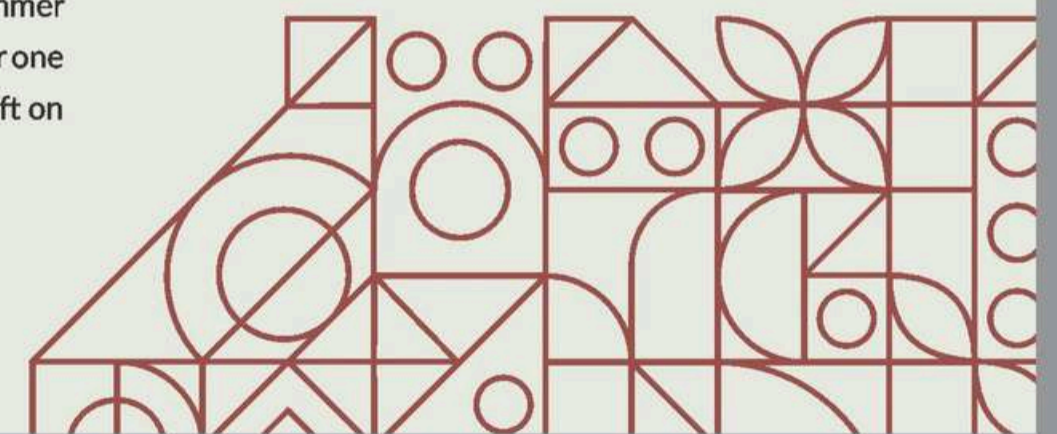


YOU MAKE
THE
SWIMMING POOL
LUXURIOUS



SPRAWLING
**POOLS TO BEAT THE
SWELTERING HEAT**

A refreshing dip in the pool on a hot summer day will be the greatest pleasure, whether one finds bliss in determined laps or lazily drift on the top as time goes by.





YOU MAKE
THE
LIVING ROOM
LUXURIOUS

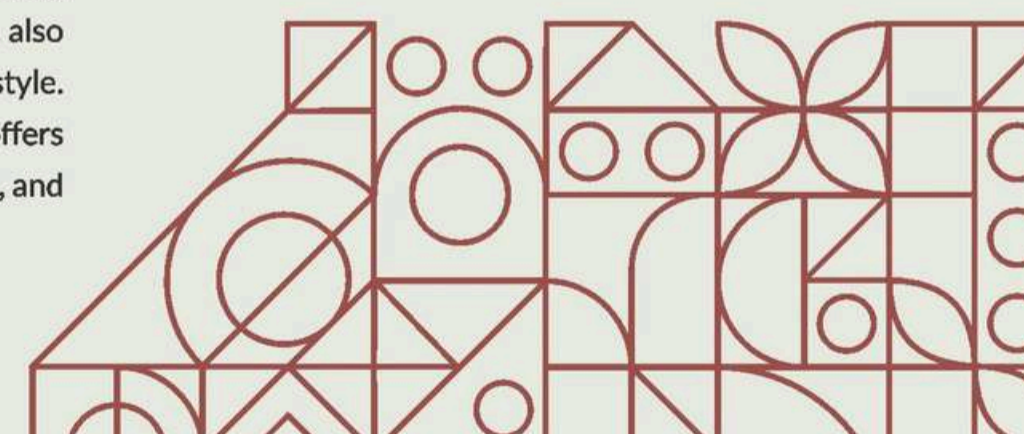


Luxuria's homes await the presence of the homemakers that add affluence to living spaces with their extraordinaire and grace. Homes are the corners of warmth and stability and Luxuria's homes are the choice that one need not think twice upon.



SPACIOUS AND COZY
**MAGNIFICENT LIVING
ROOMS**

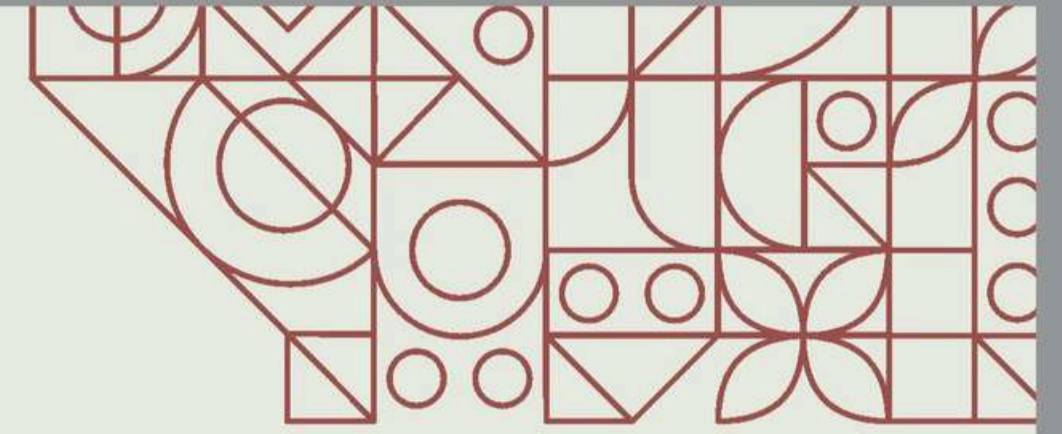
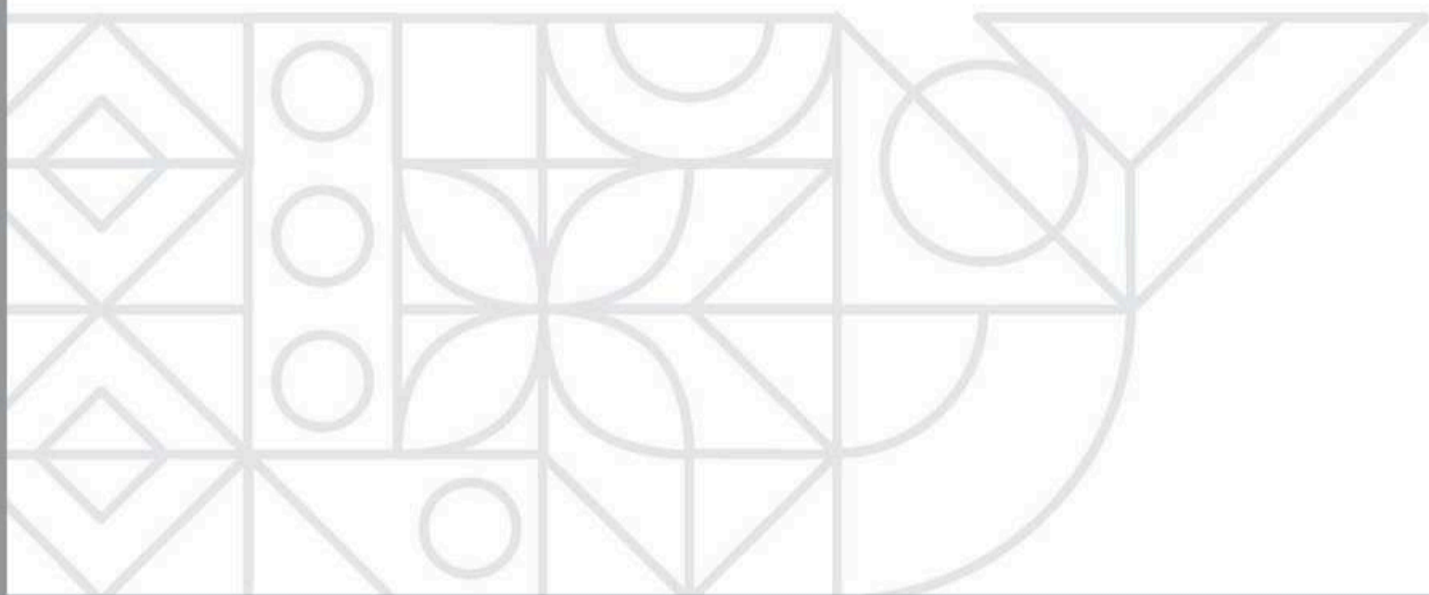
A house's focal point that feels like settling into the oasis that feels inviting while also perfectly embodying the occupant's lifestyle. A functional and stylish home that offers plenty of space for entertaining, relaxing, and socializing.





VAST ORNATE
PALATIAL FOYER

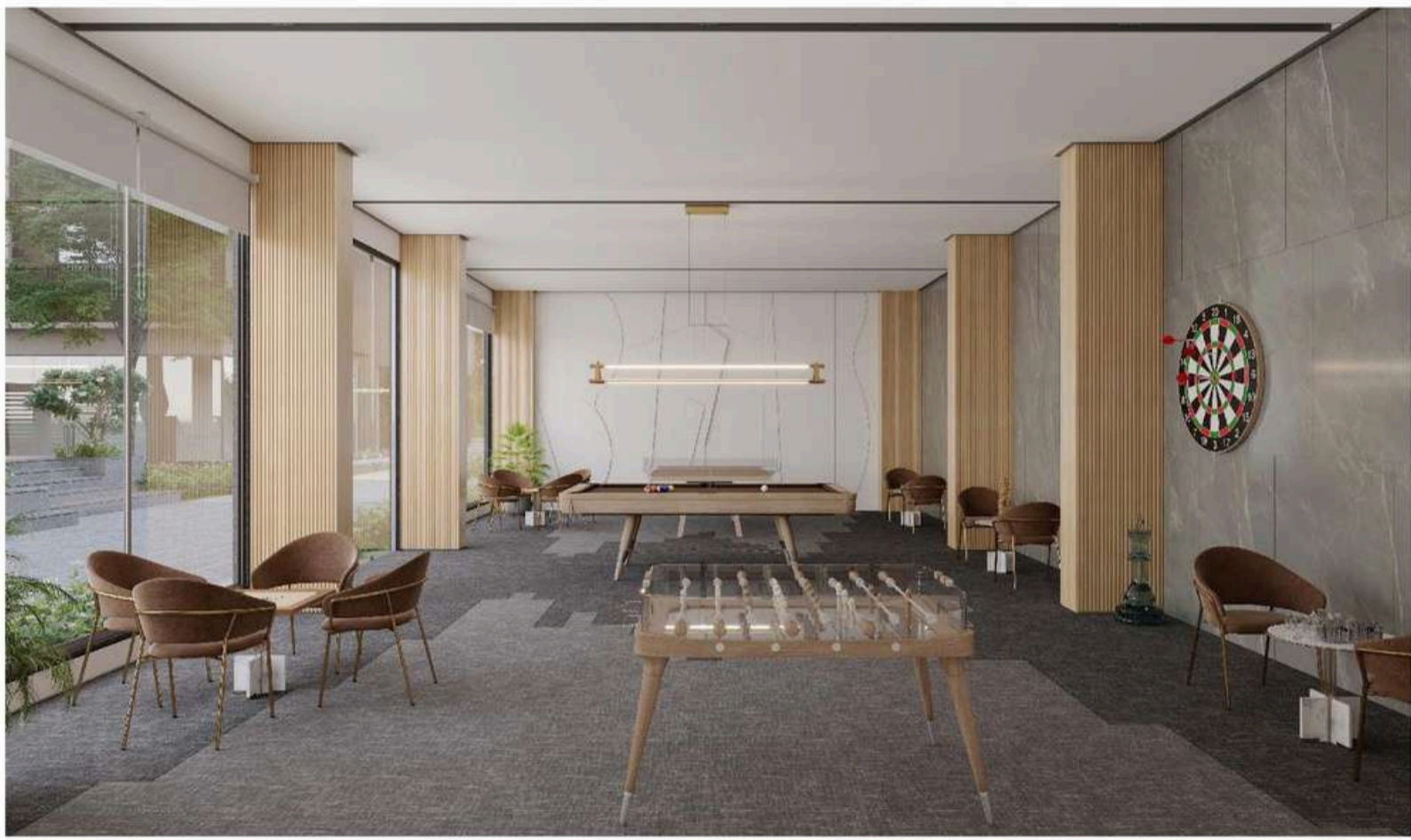
An aesthetic opening for the arriving guests
that gives the taste of opulent living.



GRAND SUMPTUOUS
BANQUET HALL

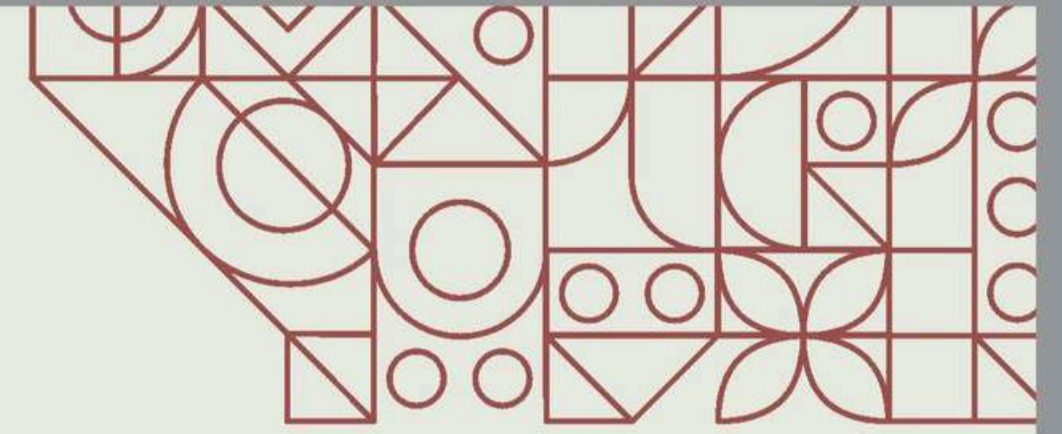
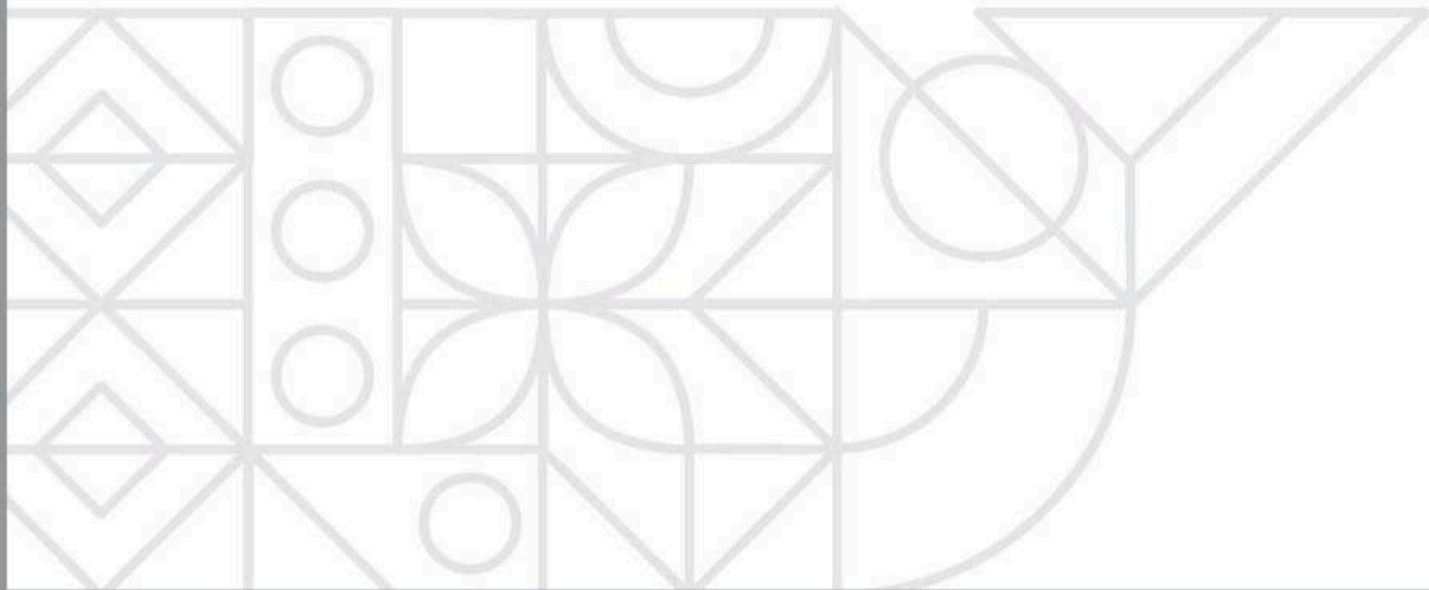
Extravagant banquet hall area providing plenty
of room for celebrations and occasions.





DEDICATED INDOOR GAMES AREA

Stimulating and comfortable environment for
exercising and spending quality time with buddies.



SPLENDIDLY COMFORTABLE DECOROUS LIBRARY

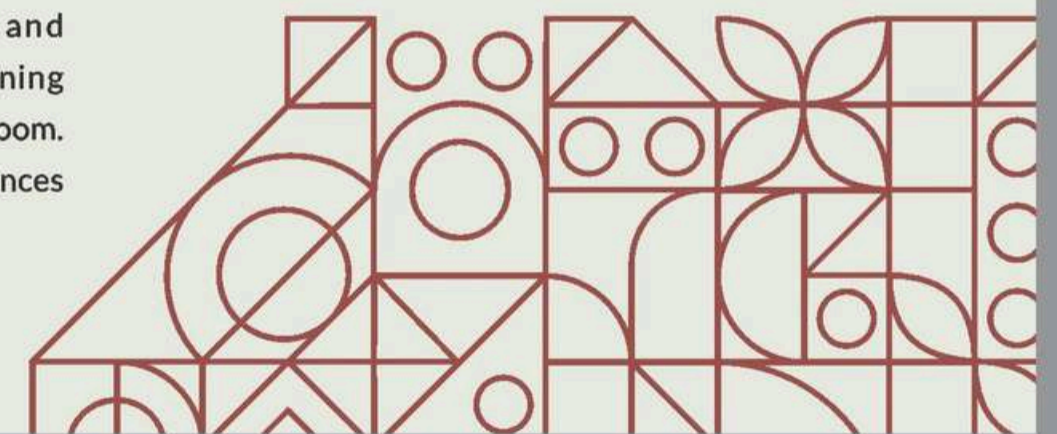
A quiet corner for unwinding and slipping
deep into one of the classics .

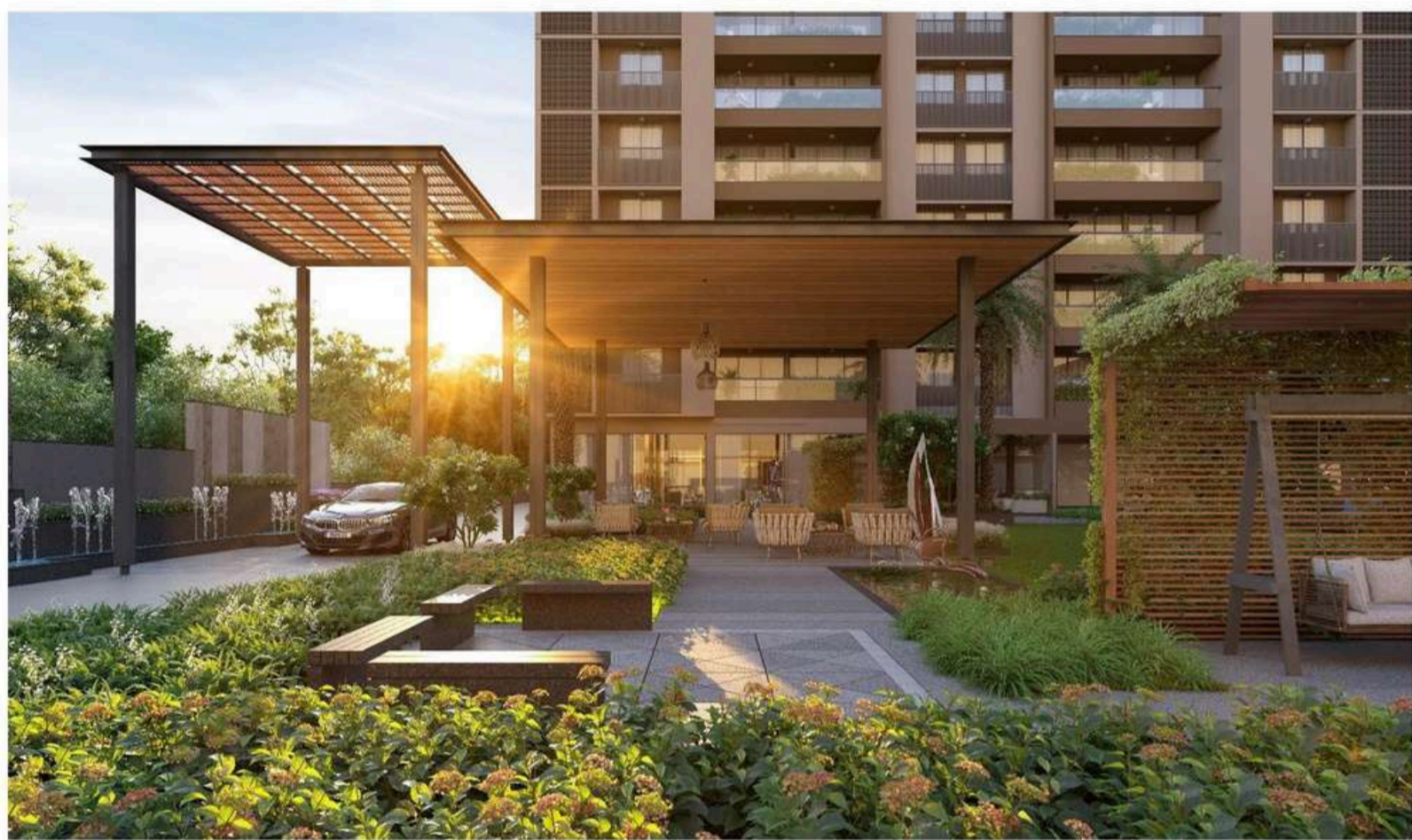




COMMODIOUS AND
EQUIPPED YOGA
ROOM

A calming inviting and relaxing community space for unpacking, practicing and perfecting the alignments and gaining mindfulness in an adequately spaced room. Unroll the Yoga mats without hindrances toward a healthier lifestyle.





GRAND AND TREMENDOUS
GAZEBO

Celebrate gloriously in the ornamental roofed
open gazebo on the society porch itself.

AMENITIES



Amphitheater



Kids Play Area



Multipurpose Gaming Court



Grand Entrance Gate



Double Basement Parking



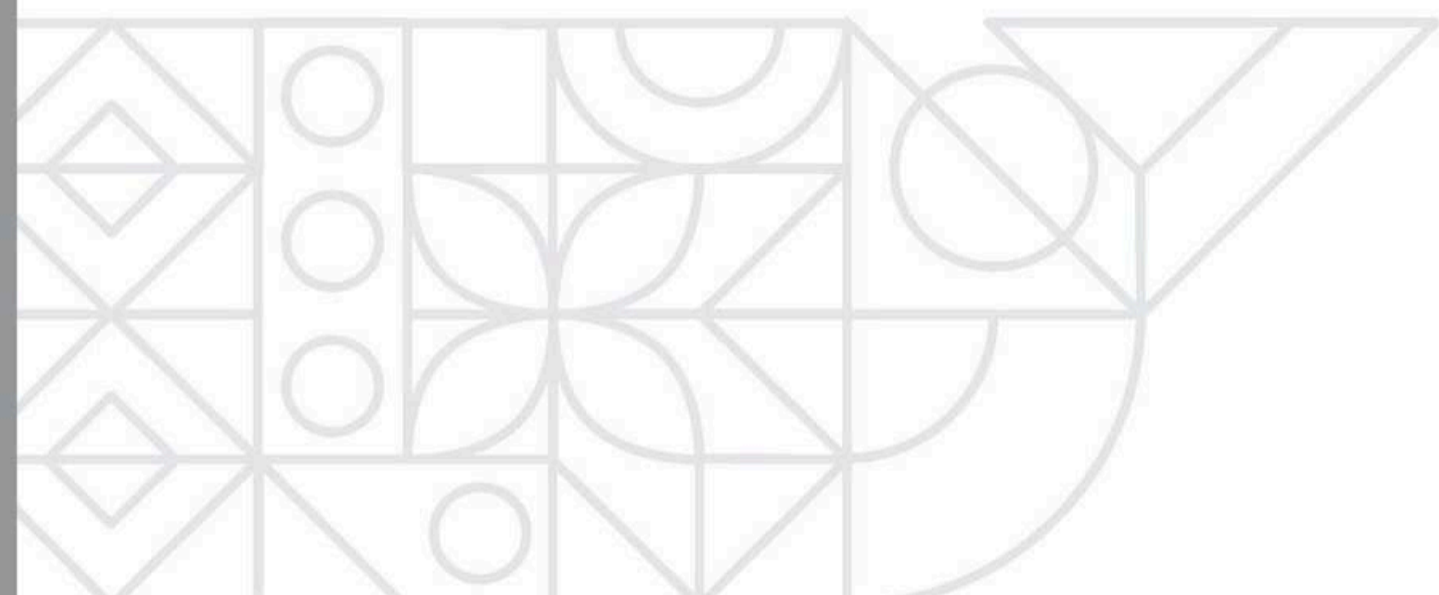
Water Body & Fountain



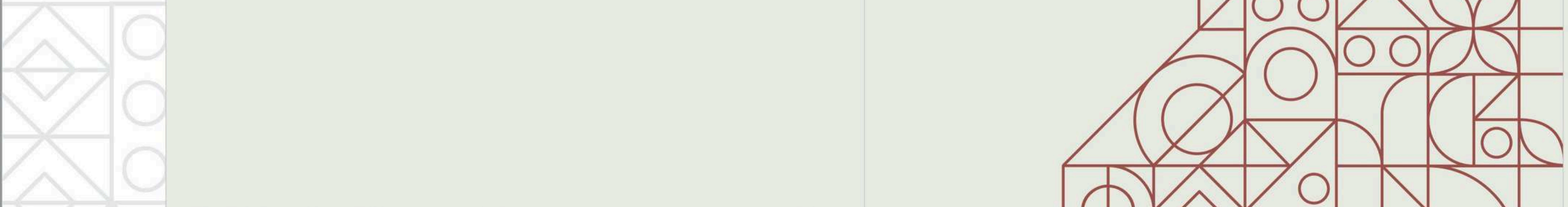
Senior Citizen Sit-out



Security Cabin







FIRST FLOOR



SECOND FLOOR



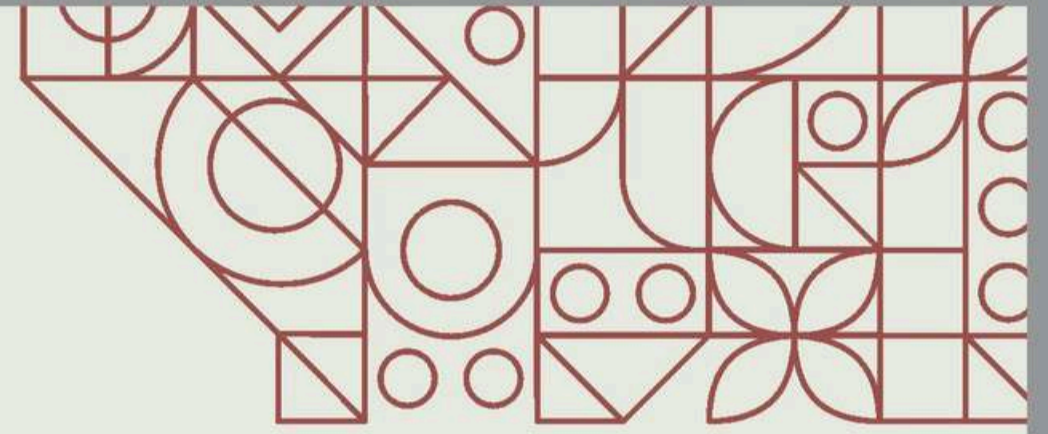
ROAD

TYPICAL FLOOR
 Block - A, B, C (3rd to 7th Floor)
 Block - D (3rd to 9th Floor)



TYPICAL FLOOR
Block - A, B, C (8th Floor)
Block - D (10th Floor)





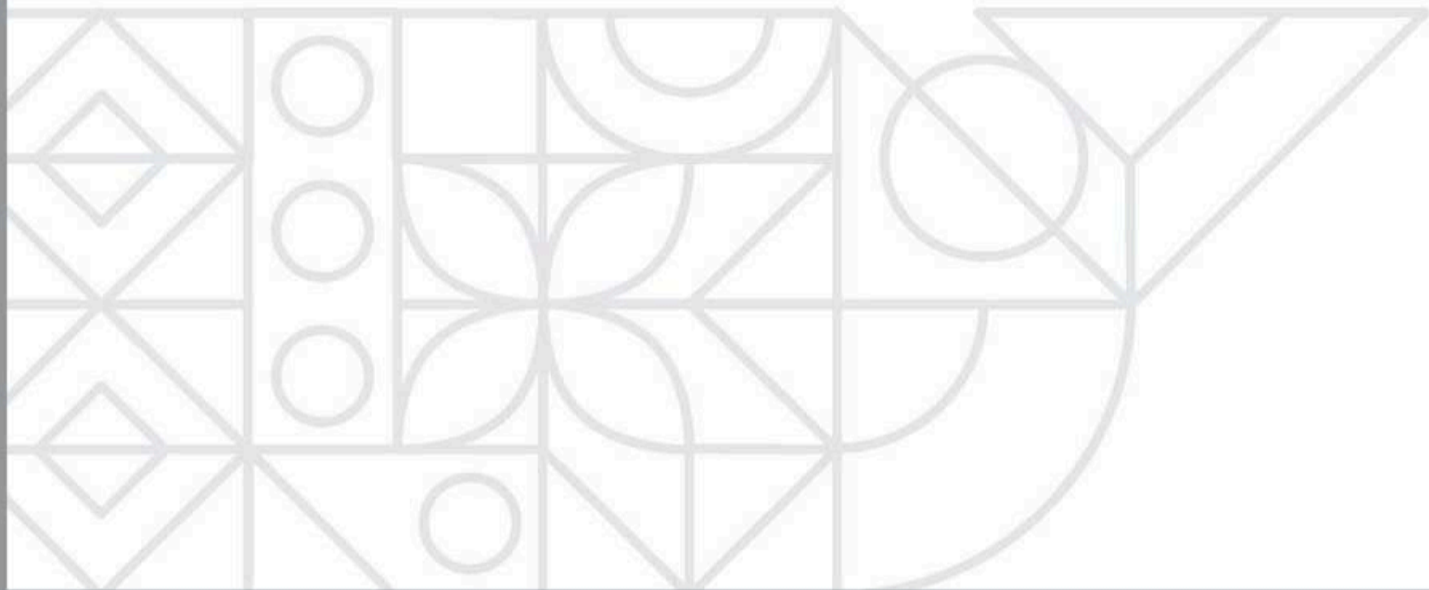
ELEGANTLY PLEASANT AND MODERN BEDROOMS

Intelligently planned essential spaces for relaxing
and recharging that reflect the style of residents.

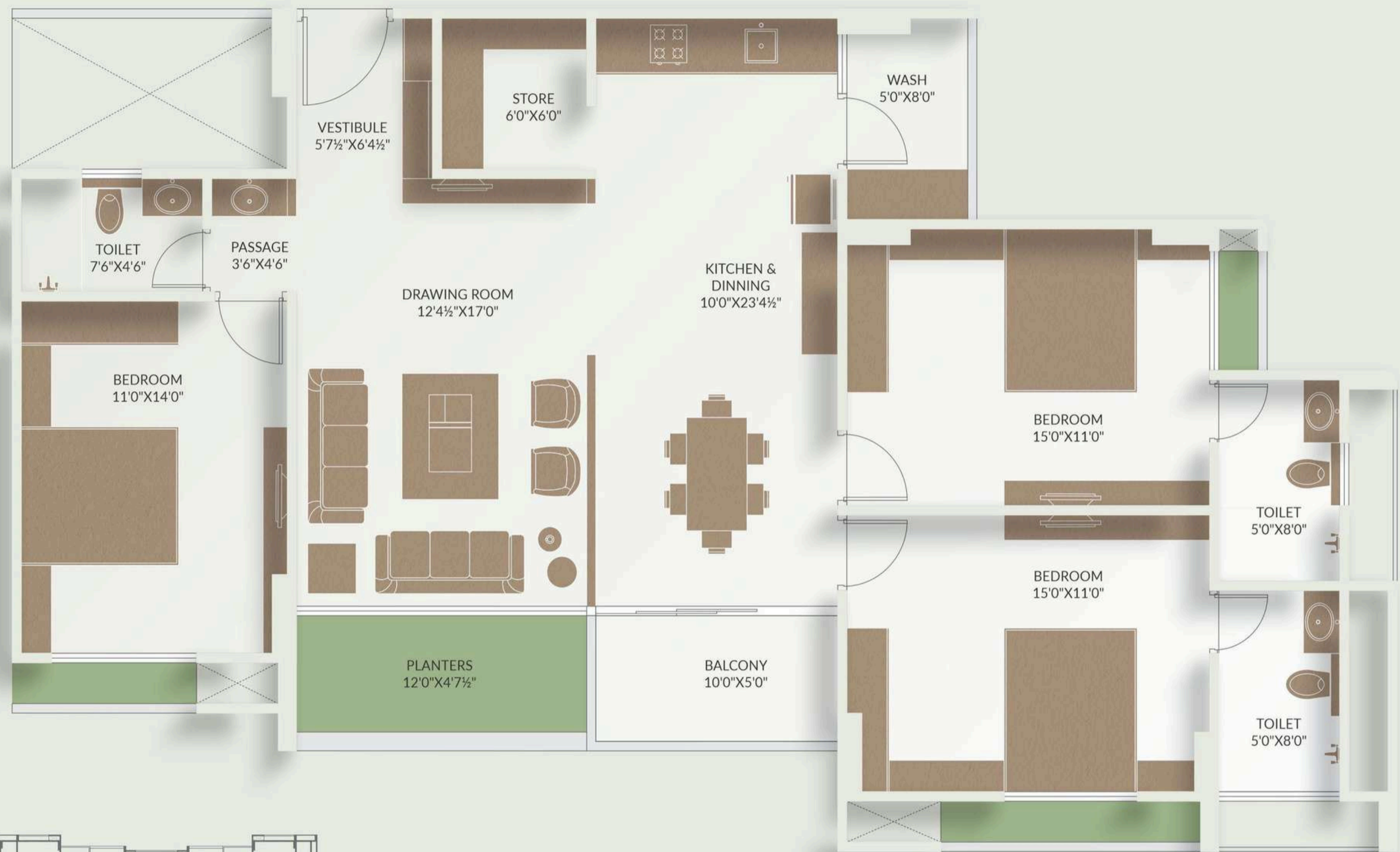


OPEN AND IMMACULATE KITCHEN AREA

A comfortable, functional, and attractive central
spot for important household activities sorted.



TYPE - 1 (3 BHK)
Block - A & D



TYPE - 2 (3 BHK)
Block - B & C





SPECIFICATIONS

STRUCTURE

- RCC frame earthquake resistant structure.

FLOORING

- High quality premium flooring in living, dining & bedrooms.

ELECTRIFICATION

- Concealed copper wiring.
- Premium branded switches with FR wires.

WATER STORAGE

- 24 X7 underground & overhead tank for sufficient water storage.

WALL FINISH

- Double coat plaster.

FITTING AND FIXTURES

- Premium quality fittings & fixtures.

ELEVATORS

- Double basement parking with fully automated branded lifts.

DOORS

- Flush door with plywood frame.

BATHROOM

- Premium CP fittings and sanitary ware.

KITCHEN

- Granite top platform with SS sink and designer tiles.

BALCONY

- Anti skid tiles.

WASH AREA

- Anti skid tiles.

