



**ADDOWN REALTY**

— Connecting You To Your Perfect Property —





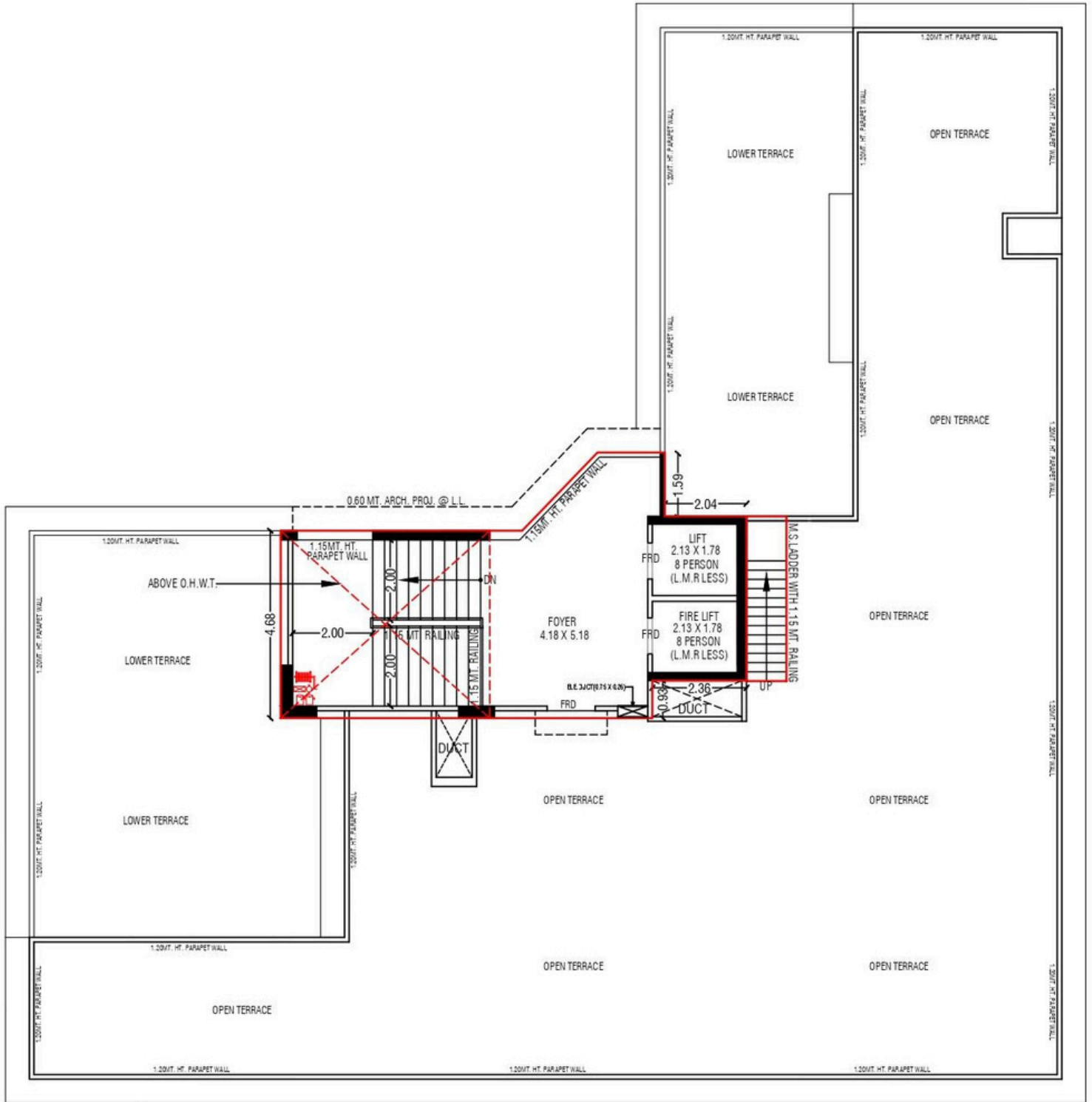
# TYPICAL FLOOR PLAN



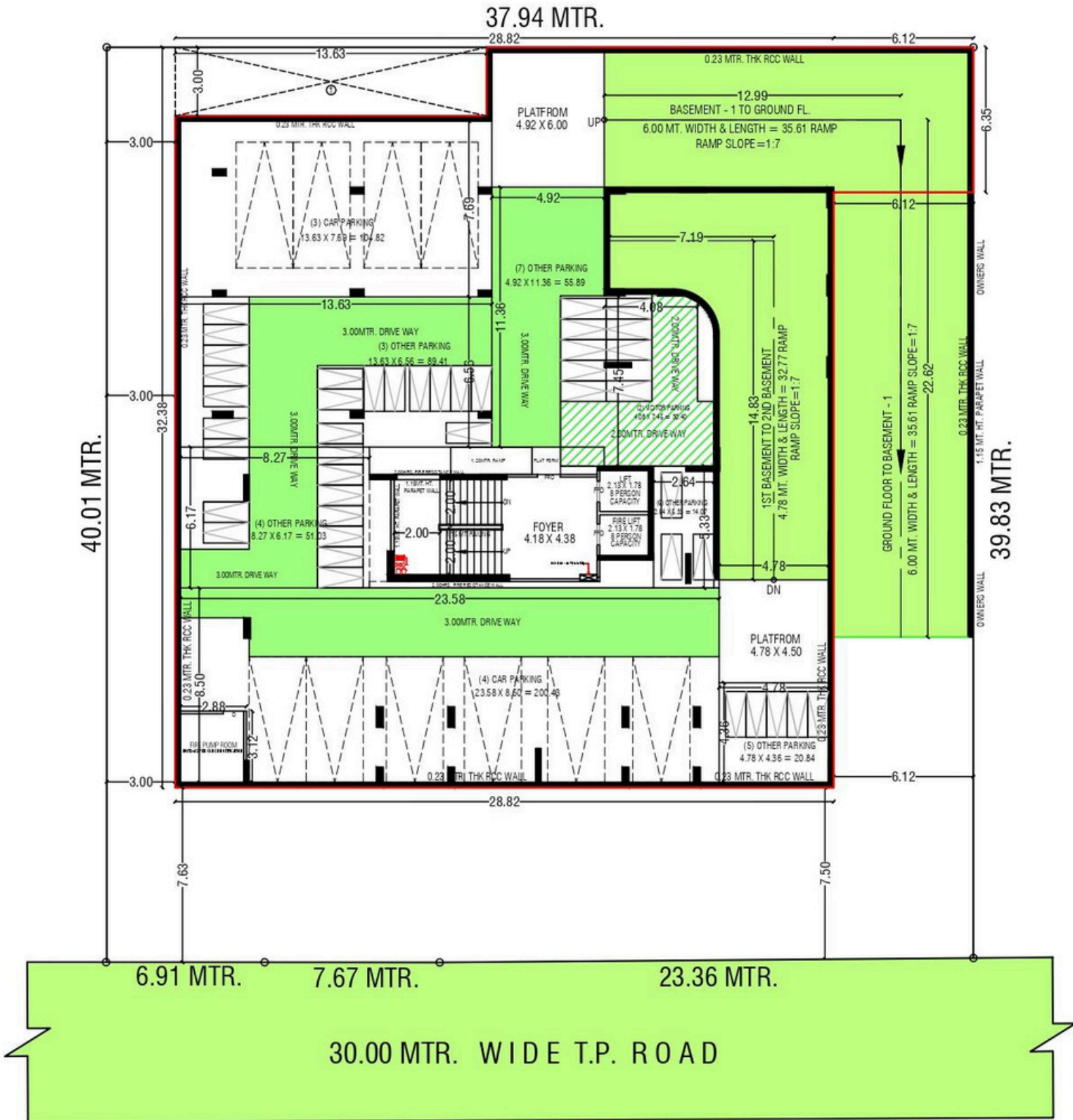




# TERRACE FLOOR PLAN



# 1<sup>ST</sup> BASEMENT PLAN







# SPECIFICATIONS

**STRUCTURE:** Earthquake Resistant R.C.C. Frame Structure

**FLOORING:** Good Quality Vitrified Tiles

**KITCHEN:** Platform With Premium Quality Sink

**WALL FINISH:** Internal Single coat Plaster With Wall Putty. External Double Coat Plaster And Texture  
With Good Quality Acrylic Paint

**DOOR & WINDOWS:** All Plain Flush Door Without Laminate And Colour , Aluminium Section Windows

**ELECTRIFICATION:** 3:Phase Concealed ISI Wiring, Moduler Switches With MCB & ELCB

**TOILET & PLUMBING:** Good Quality Branded Bath Fittings And Sanitary Ware

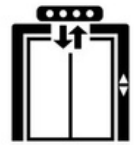
# AMENITIES



LANDSCAPE GARDEN



SEATING AREA



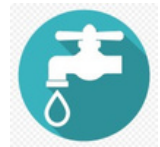
AUTOMATIC LIFT



CHILDREN PLAY



GAS PIPE LINE



BORE WELL



RCC ROAD



24x7 SECURITY



FIRE SAFETY



CCTV



PICKUP POINT