



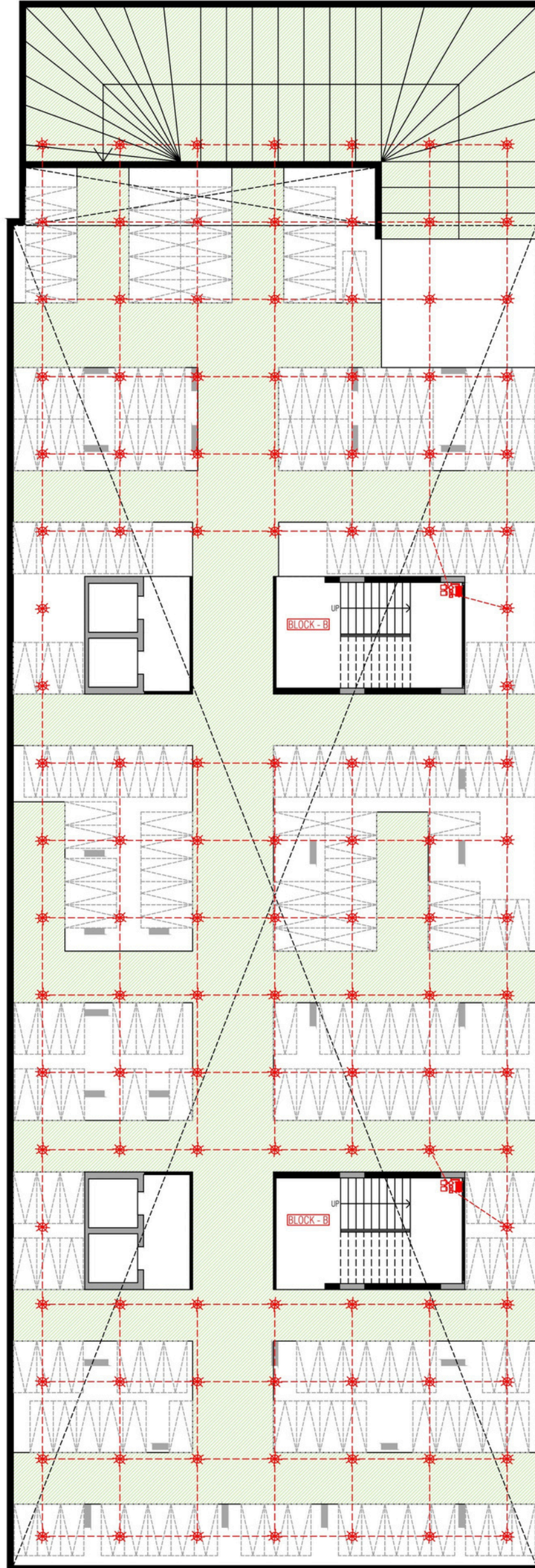
ADDOWN REALTY

— Connecting You To Your Perfect Property —





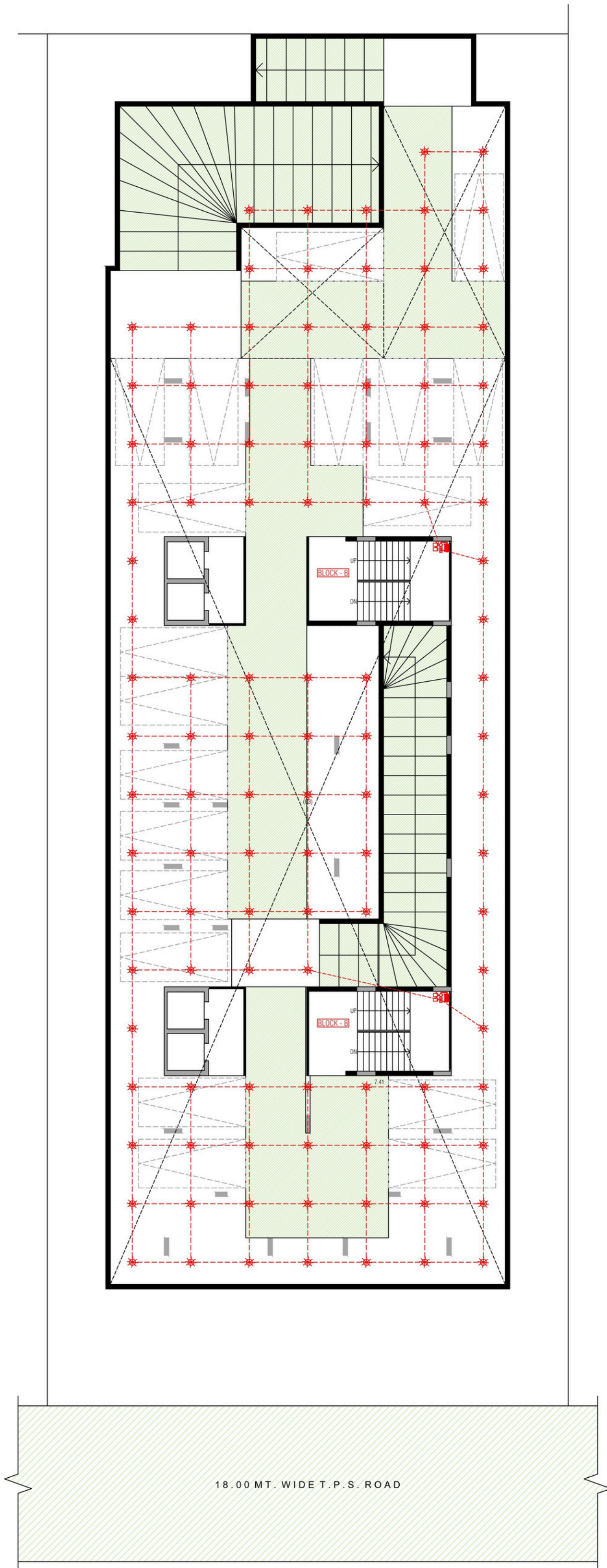
# BASEMENT 2



18.00 MT. WIDE T. P. S. ROAD

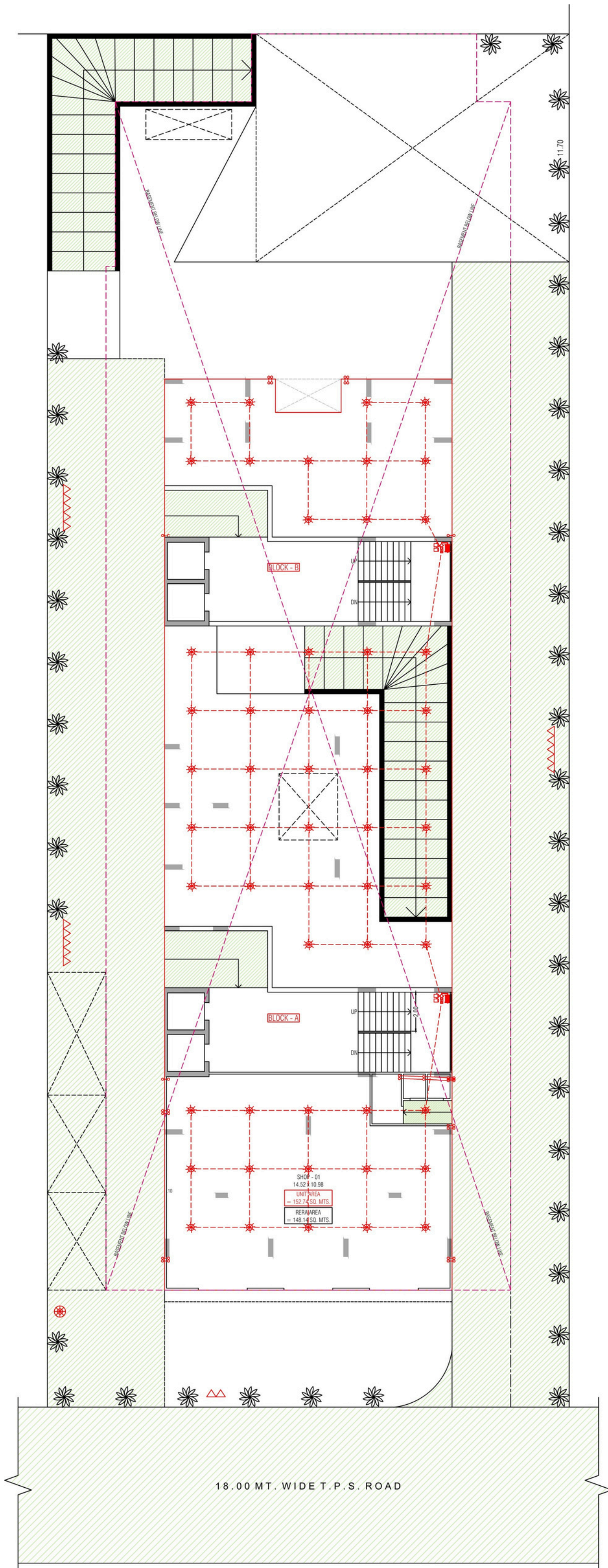


# BASEMENT 1



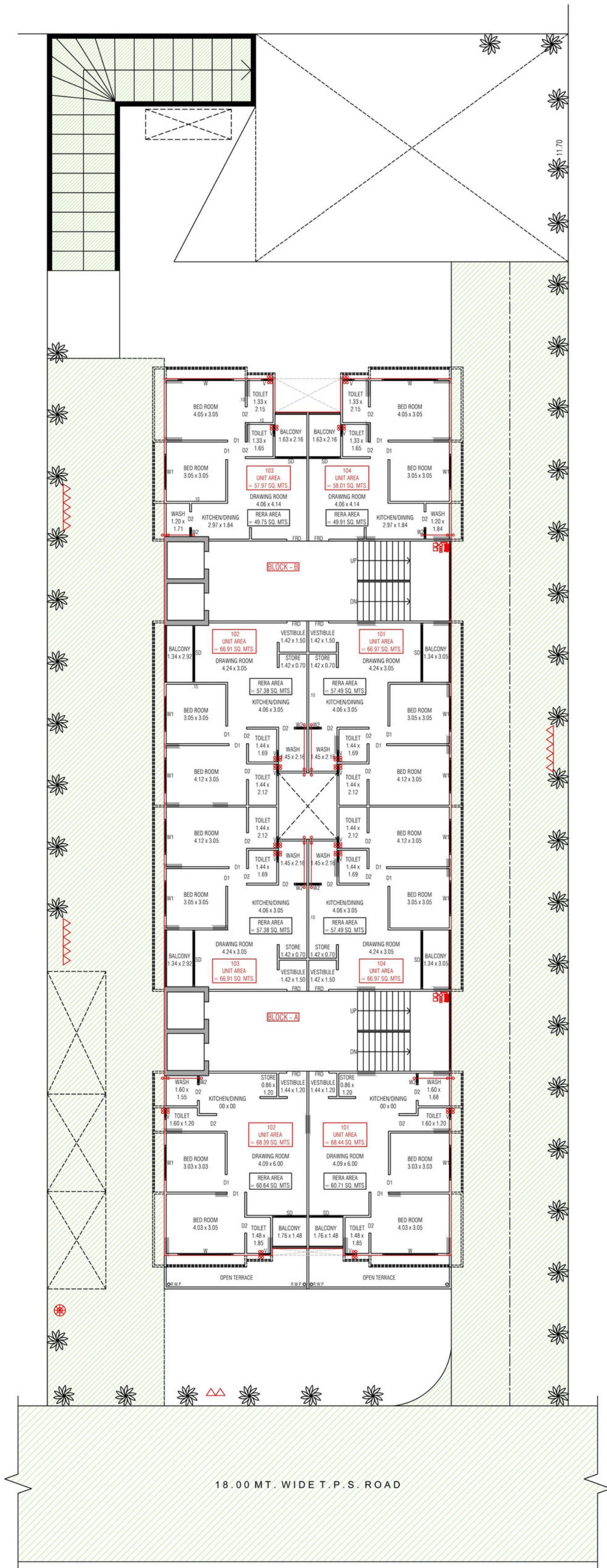


# GROUND FLOOR



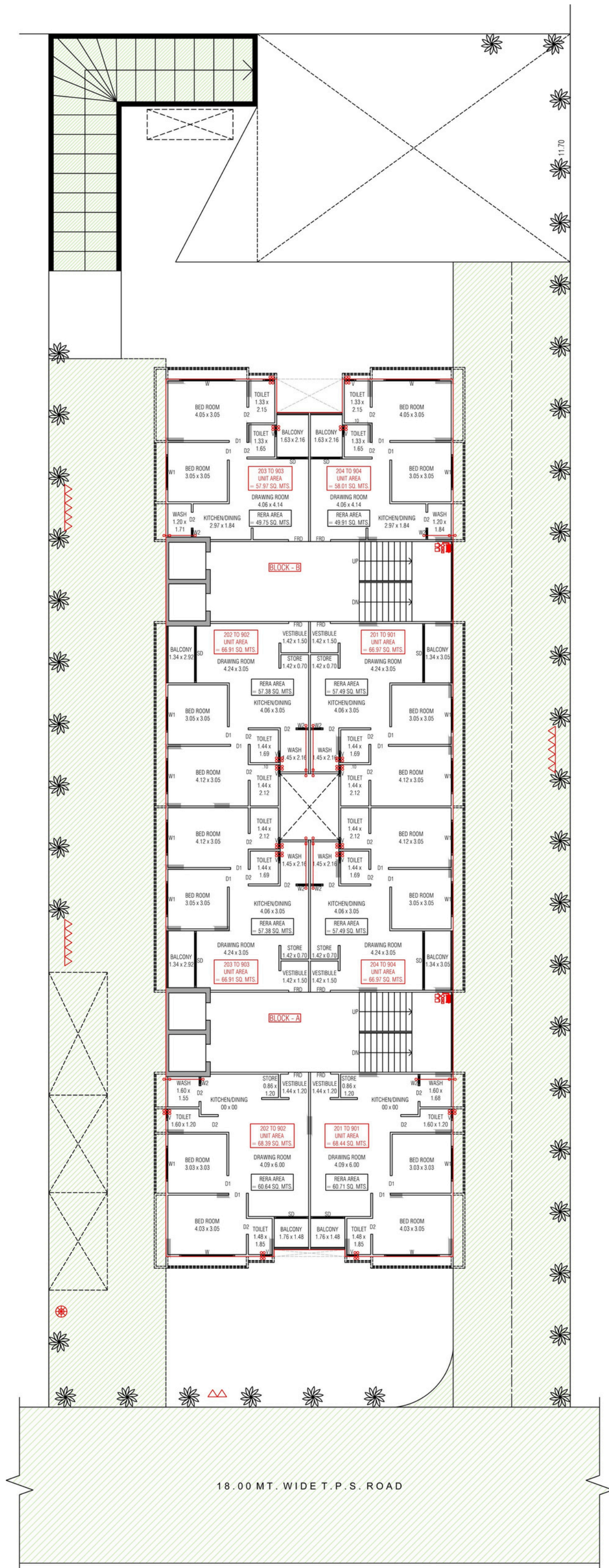


# FIRST FLOOR



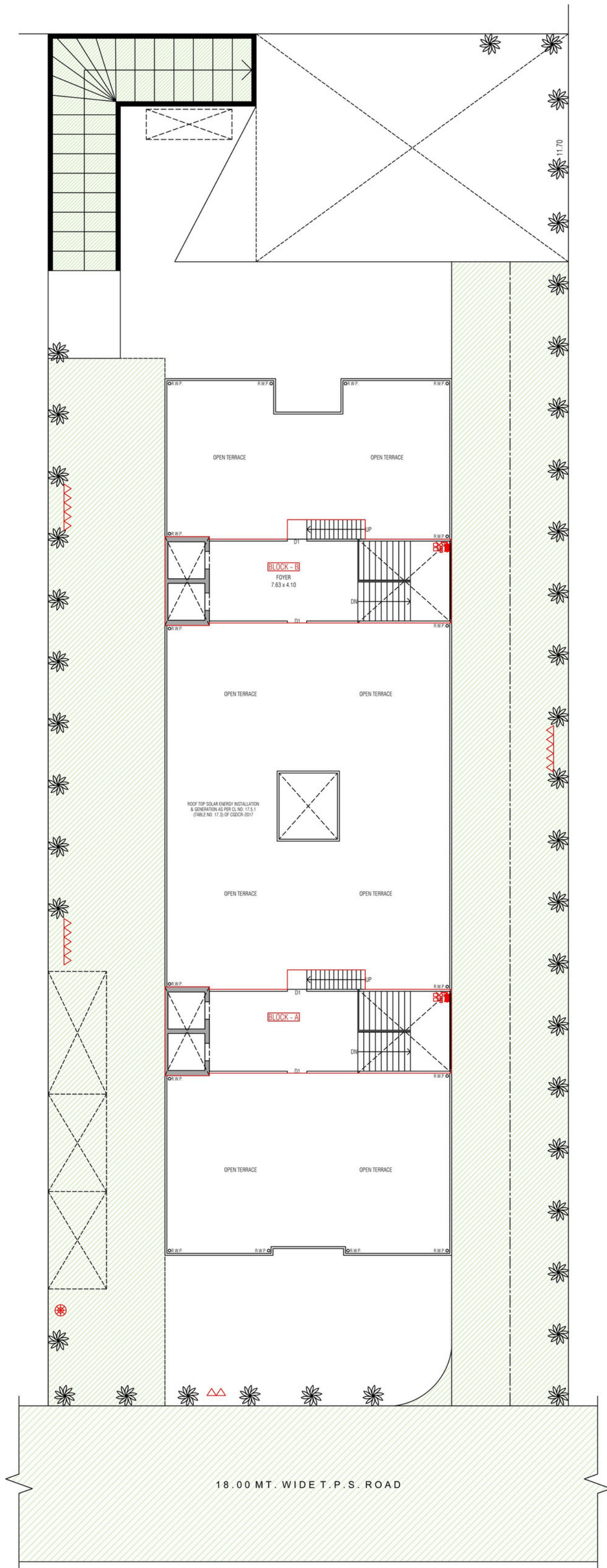


# TYPICAL FLOOR





# TERRACE FLOOR





#### **STRUCTURE**

- R.C.C. Moment frame structure, seismically resistant adhering to IS-CODE guidelines.

#### **FLOORING**

- Vitrified tiles flooring.

#### **KITCHEN**

- Granite platform with Stainless Steel sink.
- Glazed tiles dado up to lintel level.
- Provision for R. O. point with required electrical & plumbing point.

#### **BATHROOMS/TOILET**

- Anti-skid flooring.
- Glazed tiles dado up to lintel level.
- Quality Bathroom accessories and fittings.

#### **DOORS & WINDOWS**

- Laminated flush doors with MS frame.
- Premium quality aluminium section.

#### **WASH AREA**

- Anti-skid flooring.
- Provision for washing machine fittings with electrical and plumbing point.

#### **MECHANICAL ELECTRICAL & PLUMBING**

- Concealed copper wiring with M.C.B / E.L.C.B.
- Plenty of electrical sockets with quality switches.
- Quality U.P.V.C. pipes for regular water supply.
- Quality C.P.V.C. pipes for hot water supply.
- Quality P.V.C pipe for drain.

#### **TERRACE**

- Open terrace with leak proof floor.

#### **PLASTER & PAINTS**

- Inside : Single coat mala plaster with wall putty finish.
- Outside : Double coat mala plaster with texture or exterior paint for attractive elevation.