

FOR OFFICE USE ONLY



ADDOWN REALTY  
— Connecting You To Your Perfect Property —

COMING  
SOON

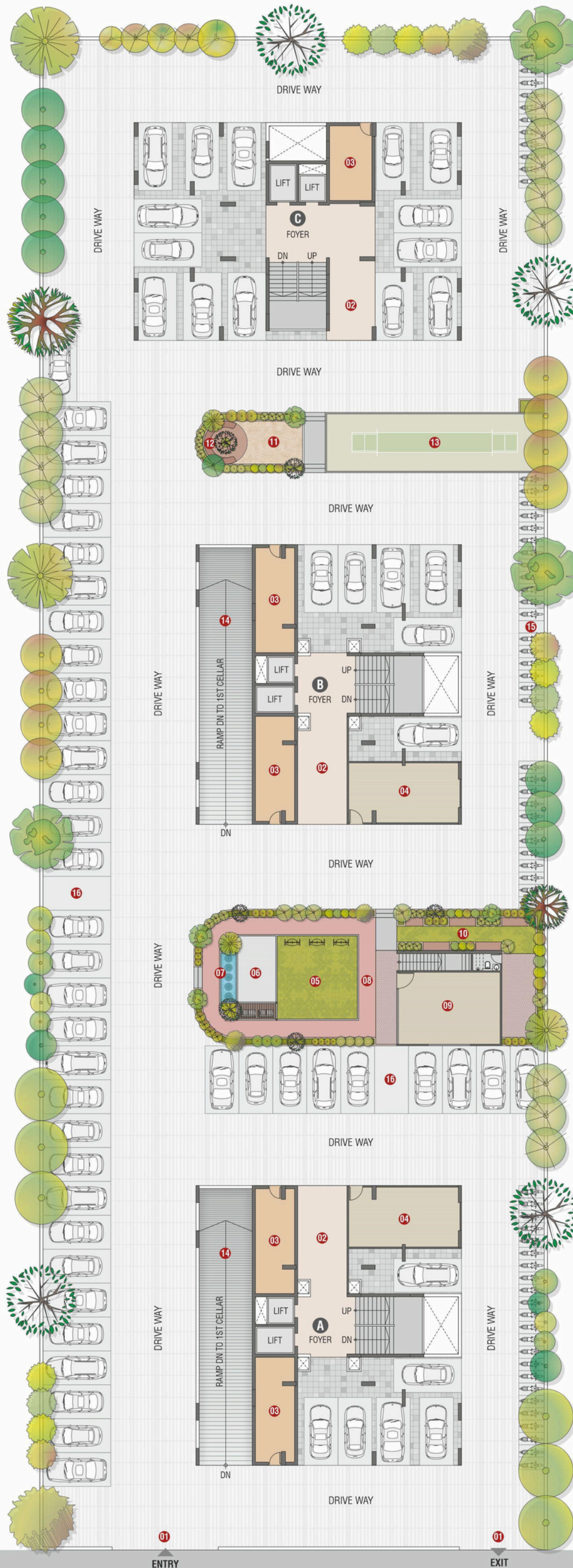


# GROUND FLOOR PLAN



## LEGEND

- 01 ENTRY / EXIT
- 02 ENTRANCE FOYER
- 03 METER ROOM
- 04 AMENITIES ROOM
- 05 PARTY LAWN
- 06 YOGA DECK
- 07 FOUNTAIN
- 08 JOGGING TRACK
- 09 BANQUET HALL
- 10 SENIOR CITIZEN SITTING
- 11 KIDS PLAY AREA
- 12 SEATING
- 13 BOX CRICKET
- 14 RAMP
- 15 BIKE PARKING
- 16 CAR PARKING



01  
ENTRY

01  
EXIT

18.00 MTS. WIDE ROAD

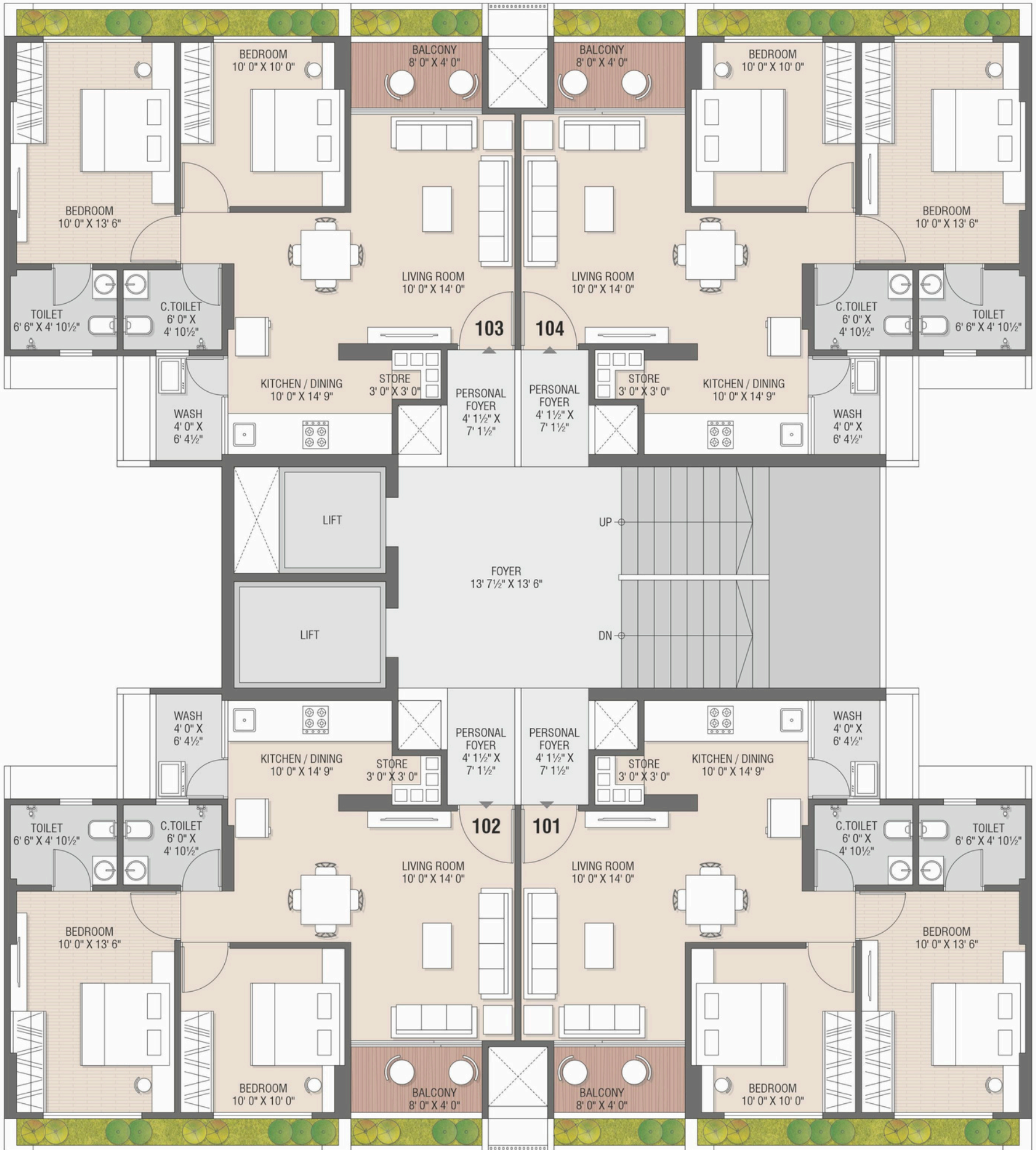
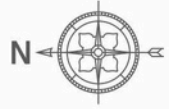
# TYPICAL FLOOR PLAN



# 2 BHK

TYPICAL PLAN

## BLOCK - A+B



# 2 BHK

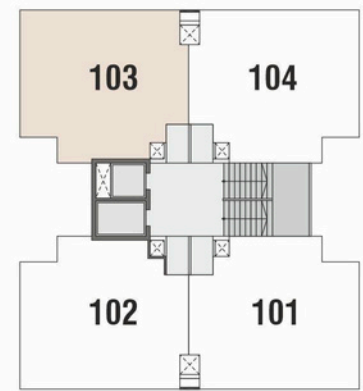
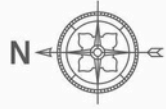
TYPICAL PLAN

## BLOCK - C

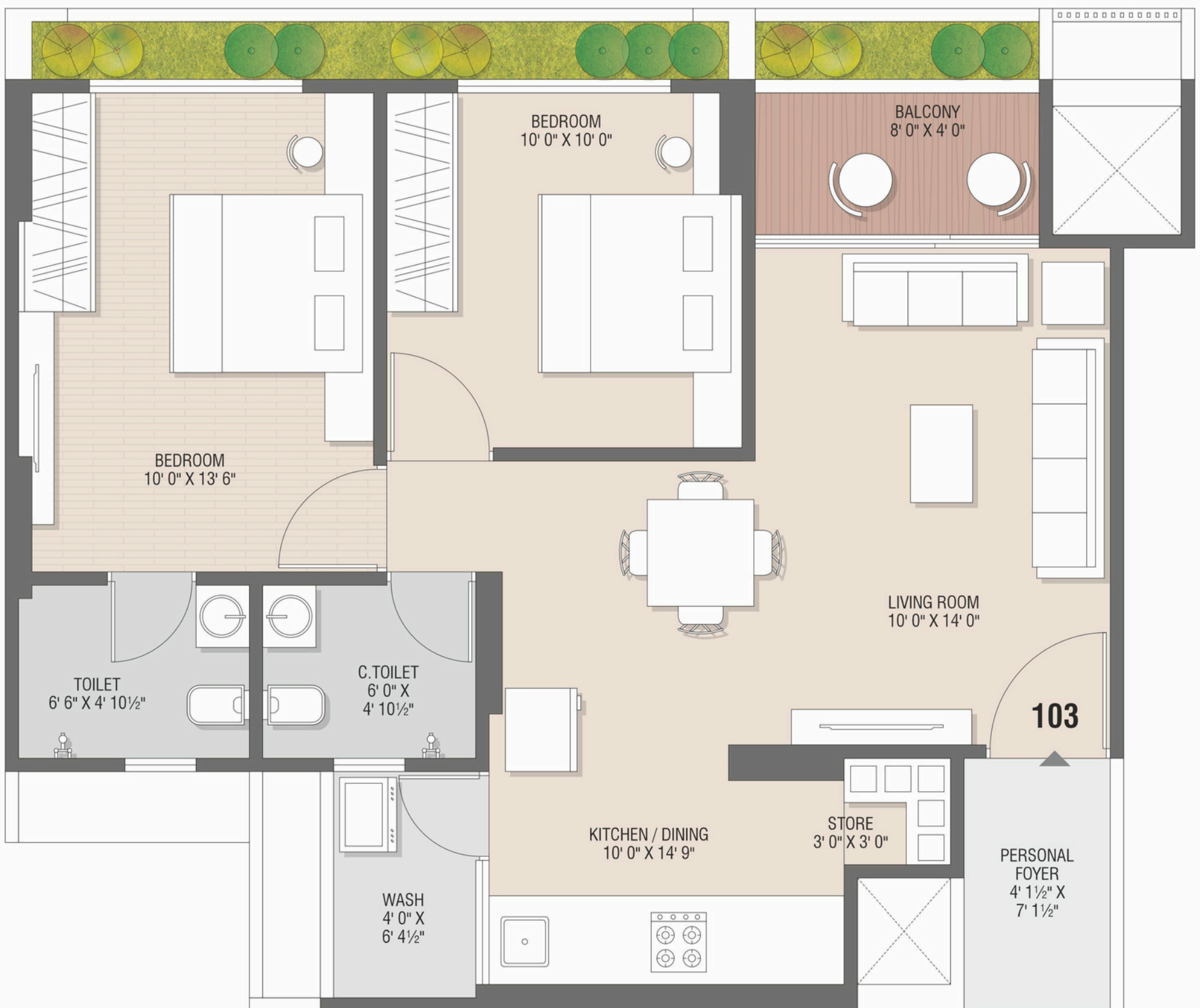


# 2 BHK

TYPICAL UNIT

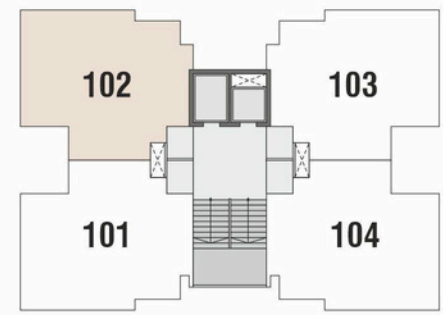
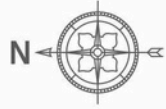


BLOCK - A+B



# 2 BHK

TYPICAL UNIT



BLOCK - C



# SPECIFICATION



**Structure:**  
Earthquake resistant R.C.C. frame structure as per new law.

---



**Flooring:**  
Vitrified tiles for entire flooring in all apartment.

---



**Wall Finish & Elevation:**  
Internal Mala plaster with wall putty.  
Attractive external with double coat sand-faced plaster.

---



**Doors / Windows:**  
Decorative main door & other flush doors with granite frame.  
All windows in aluminum section with granite frame.

---



**Kitchen:**  
Mirror Polished granite platform with SS Sink, Designer glazed tiles.

---



**Electrification:**  
Branded ISI modular switches with concealed copper wiring & an adequate number of points.  
MCB Distribution panel.

---



**Plumbing:**  
ISI CPVC and UPVC pipes for water supply, PVC & SWR Pipes for solid waste and drainage systems.  
Percolation recharge wells as per the norms, Branded CP Fittings.

---



**Toilet:**  
Designer tiles on floor and walls up to lintel level, Branded sanitary & bath fittings.

---



**Terrace:**  
Brick - Bat concrete with china mosaic for heat reflection and thermal insulation.

---



**Lift:**  
1 Standard ISI Branded Passenger Lift & Stretcher lift

---



**Power Backup:**  
DG Set for power backup