



ADDOWN REALTY

— Connecting You To Your Perfect Property —





WHERE LIFE IS
A SYMPHONY OF
Happiness



A one-of-its-kind residential project elevating the benchmarks of quality of life with its remarkable planning, fantastic luxuries and delightful lifestyle amenities.

G+7
Storeyed
tower

04
BHK Serene
living space

01
Wing with
elegant elevation

14+
Lifestyle
amenities

02
Side road
project

13
Limited
edition living



EXPERIENCE BLISSFUL
Greenery

SWARA
LAVANYA

THE MOST GORGEOUS
SPACE OF YOUR

Home

When most people dream about having one balcony in their apartment; you get to enjoy the mesmerising sky views and open spaces from the spacious balcony attached to your luxurious abode.

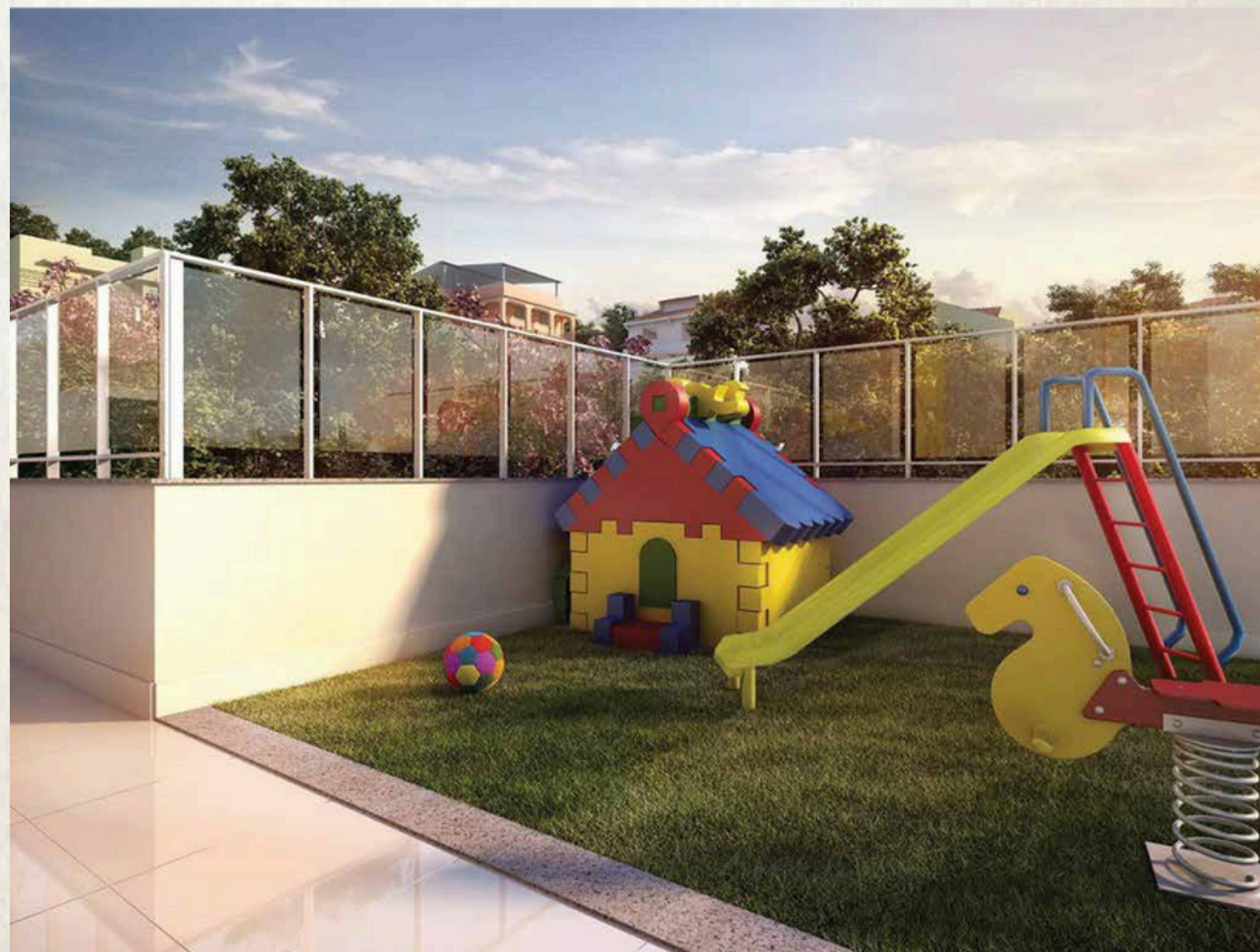




The Healthy Life



Immerse yourself in a lifestyle of wellness and leisure at our tower. Stay active and energized with our gym facility, perfect for your daily routine. Explore and play freely in our dedicated children's play area, thoughtfully designed just for them.

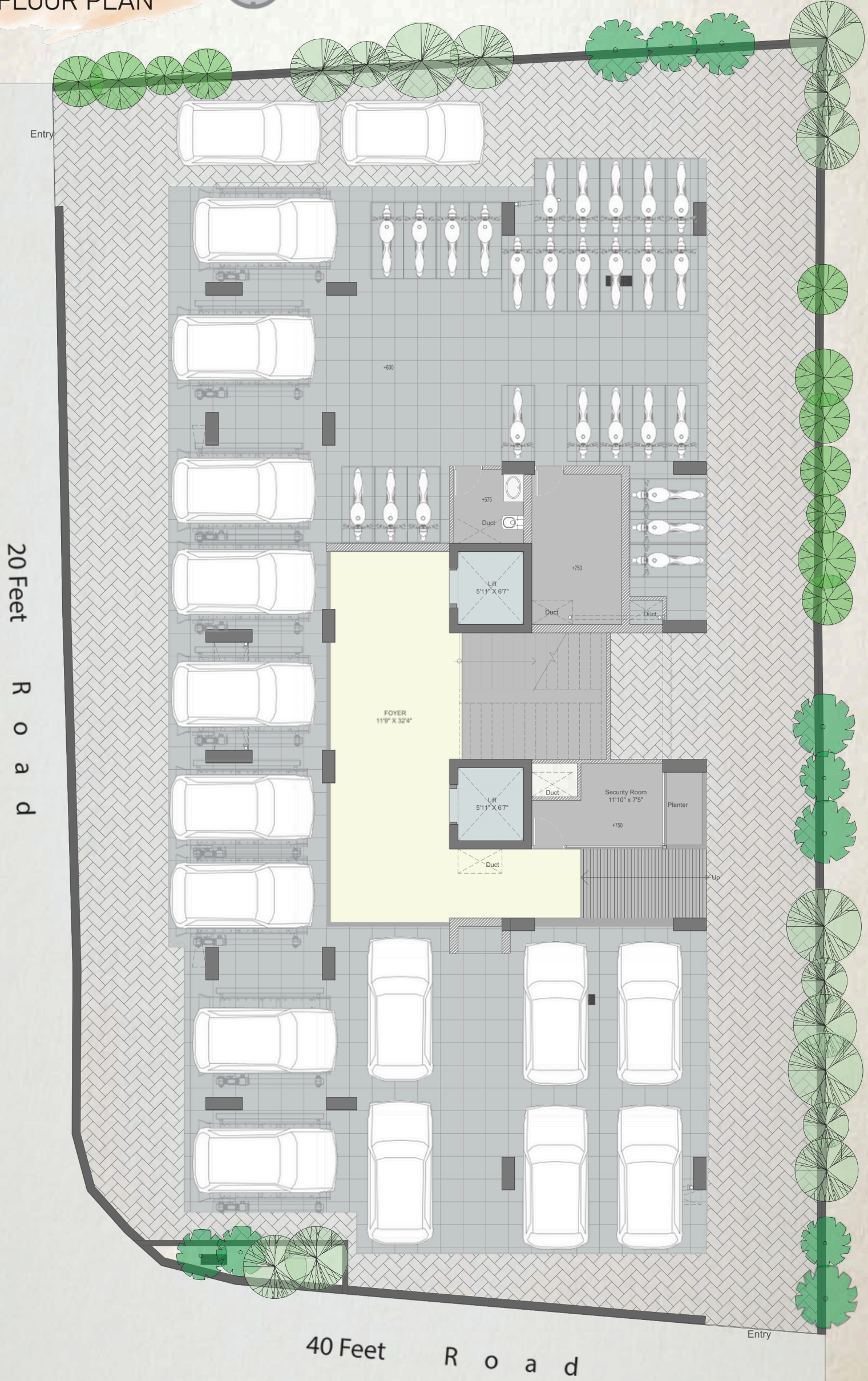


EXPLORE DELIGHTS
OF THE *Terrace*

The breathtakingly beautiful views of the skyline are the added bonus so you can enjoy while indulging in the modern amenities.



GROUND FLOOR PLAN



Truly Planned To
Perfection

Anything and everything you can wish for to live a wholesome life is here, making it a nirvana of utter bliss and joy.

14+ Lifestyle amenities



STACK CAR PARKING



PERSONAL LIFT WITH CARD ACCESS



TERRACE GARDEN



GAZEBO WITH SITOUT



GYMNASIUM



SOLAR PANEL ON ROOF TOP



CHILDREN PLAY AREA



HIGH CLASS CCTV SECURITY



SECURITY CABIN



WOODEN YOGA DECK ON TERRACE



SENIOR CITIZEN SEATING AREA



INDOOR GAMES



INTERCOMME SYSTEM LINK WITH RECEPTION



ENTRANCE FOYER WITH SEATING AREA

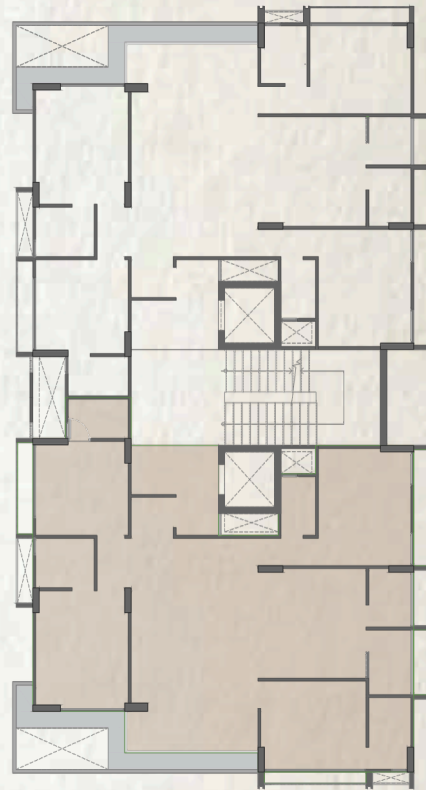
TYPICAL FLOOR PLAN



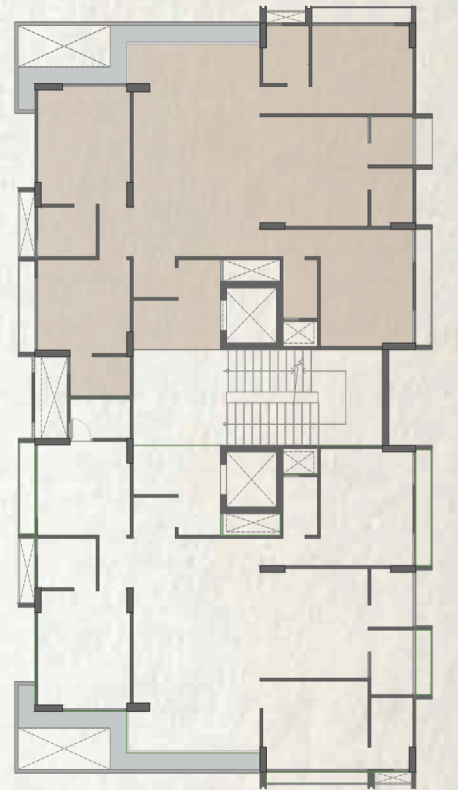
TERRACE FLOOR PLAN



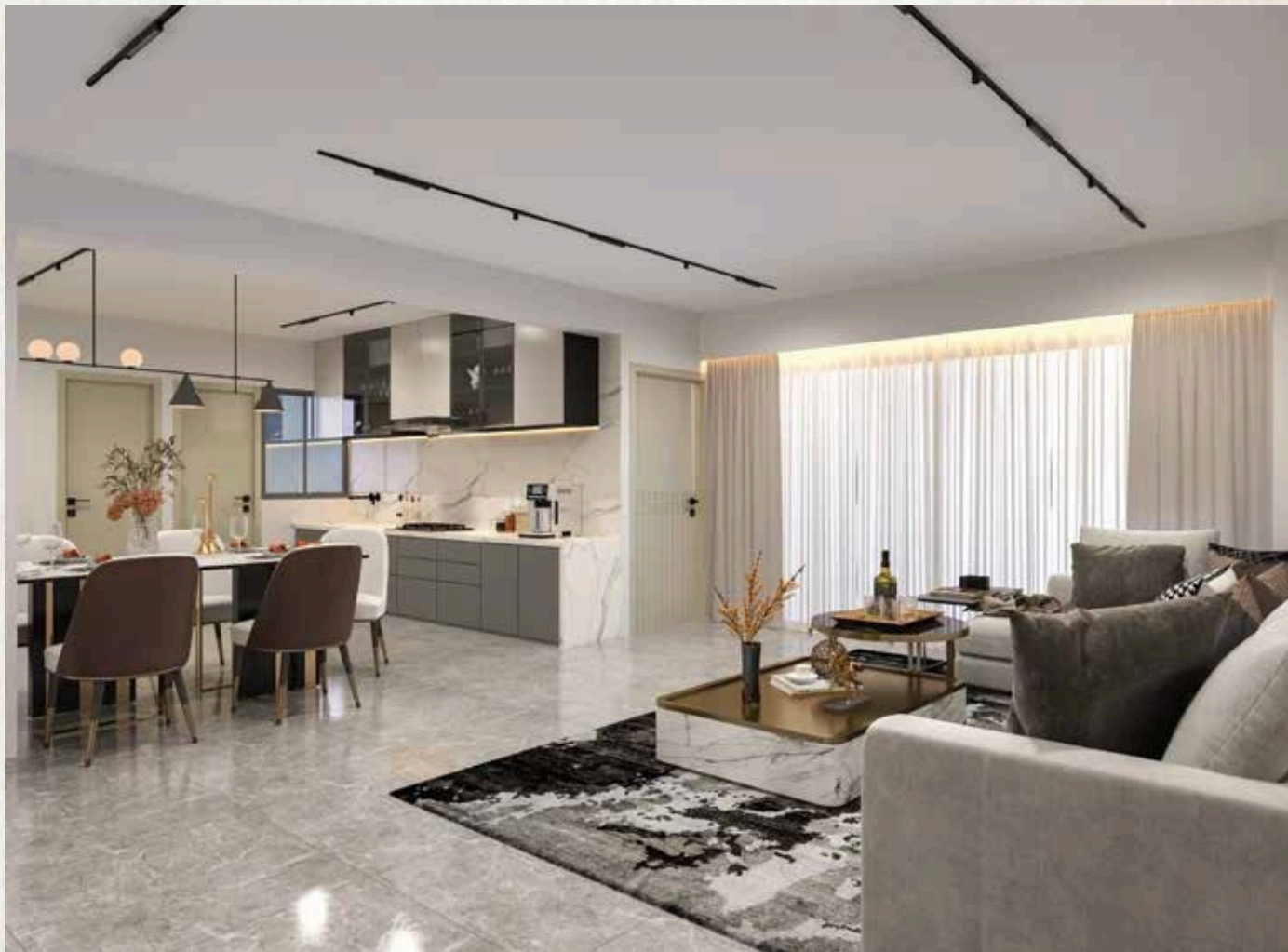
UNIT - A FLOOR PLAN



UNIT - B FLOOR PLAN



UNIT - A 3D VIEW



Salient Features & Amenities

- Automatic Elevator
- PNG gas connection provision
- Sufficient ample parking space
- Effective anti-termite treatment
- 24 Hrs. water supply
- 24 Hrs. security personnel
- Pleasant terrace garden with gazebo and individual sit-outs.
- Solar panel at roof-top generates clean energy for common utility energy consumption.

Specification



Flooring

- Premium vitrified tiles flooring



Door

- Main Door: Flush Door with Laminated Sheet Both side with wooden frame
- Internal Door: Flush Door with Laminated Sheet Both side with wooden frame/engineering ply frame



Window

- International Quality powder coating aluminum with 5mm glass



Wash Area

- Floor : Kota or Rustic vitrified tiles
- Dedo : Premium ceramic or vitrified tiles



Paints

- Inside : Putty finish
- Outside : Acrylic paint / Texture



Balcony

- Rustic tiles / Granite



Kitchen & Store

- Flooring : Vitrified Tiles
- Platform : Natural granite
- Dado : Premium ceramic tiles
- Store Shelf : DP Kota / Granite Shelf



Electrification

- 3 phase power connection
- Conceal ISI copper wiring with modular switches
- MCB distribution panel



Security

- Video door phone security system
- Entire campus covered under CCTV surveillance



Toilets

- Premium ceramic tiles upto lintel level
- Granite / counter basin
- EWC-Wall hung type- Jaquar, Kohler / equivalent
- CP Brass fitting- Jaquar, Kohler / equivalent



Railings

- MS / Toughened glass railing