



ADDOWN REALTY

— Connecting You To Your Perfect Property —

Elevate Your Life, Embrace Your Dreams



A

Right in the middle of the city, yet so peaceful and green —Addor Arise is where easy access meets quiet living, your perfect spot in the city that feels like a peaceful escape.

3

BHK

2

Exclusive
Residential
Towers

14Storeys
Each



Amenities

Multipurpose Club Room: Expansive spaces designed for leisure, including indoor games, catering to diverse interests and ages.

Children Play Area: A vibrant, safe space where children can play, learn, and grow, fostering a sense of community and joy.

On-site Healthcare: Access to a dedicated medical room for health emergencies, ensuring peace of mind and well-being.

Terrace Garden: A tranquil garden space, offering a peaceful oasis amidst the bustling city life.

Senior Citizen Sit-Outs: Thoughtfully designed areas for relaxation and socializing, embracing the needs of our elderly residents.

Advanced 3-Tier Security System: Comprehensive security measures in place to ensure the safety of every resident.

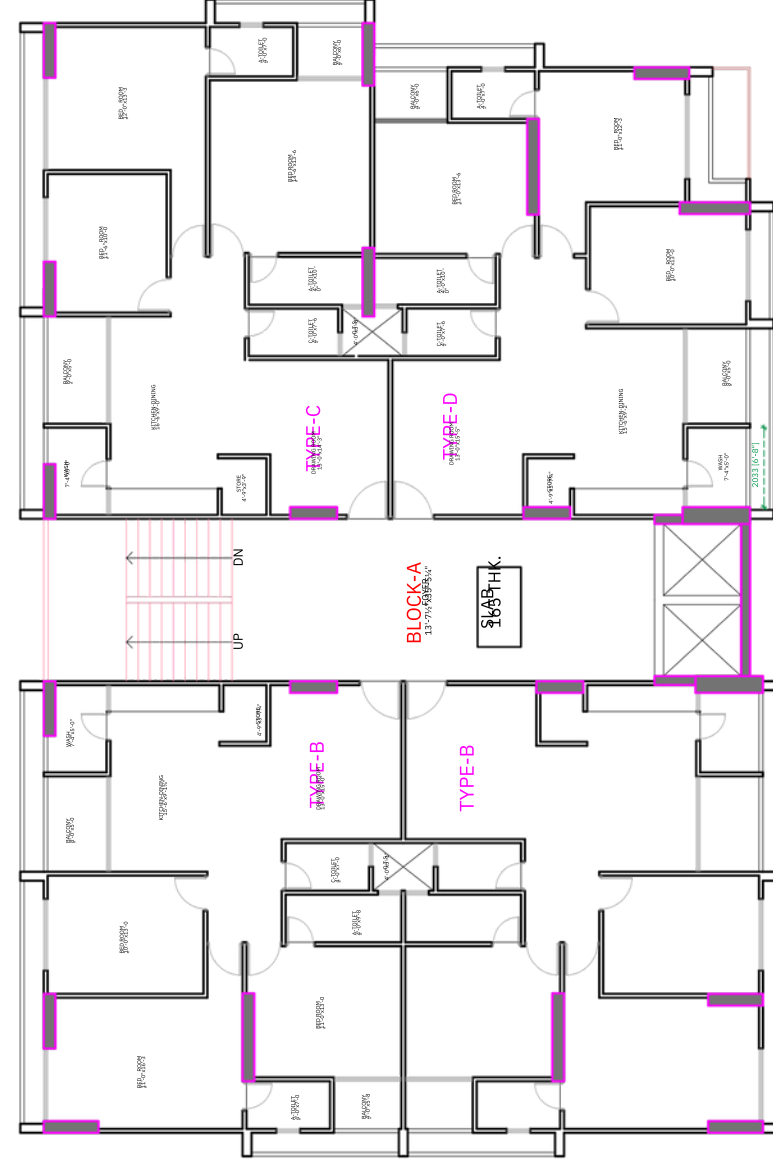
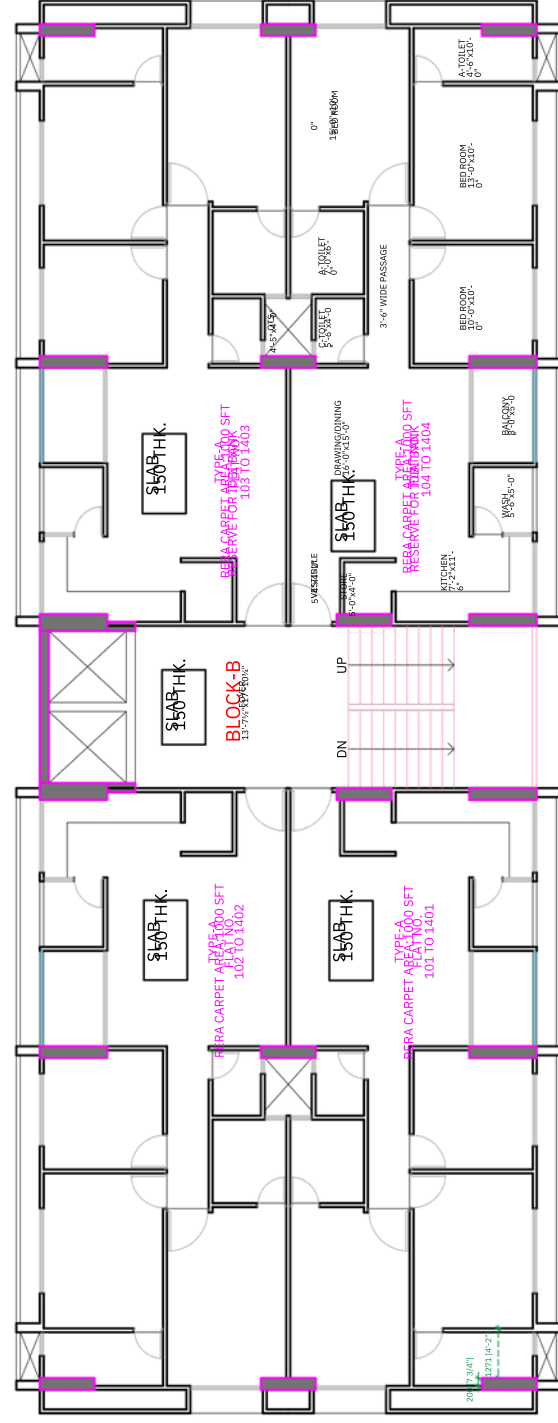




Master Plan

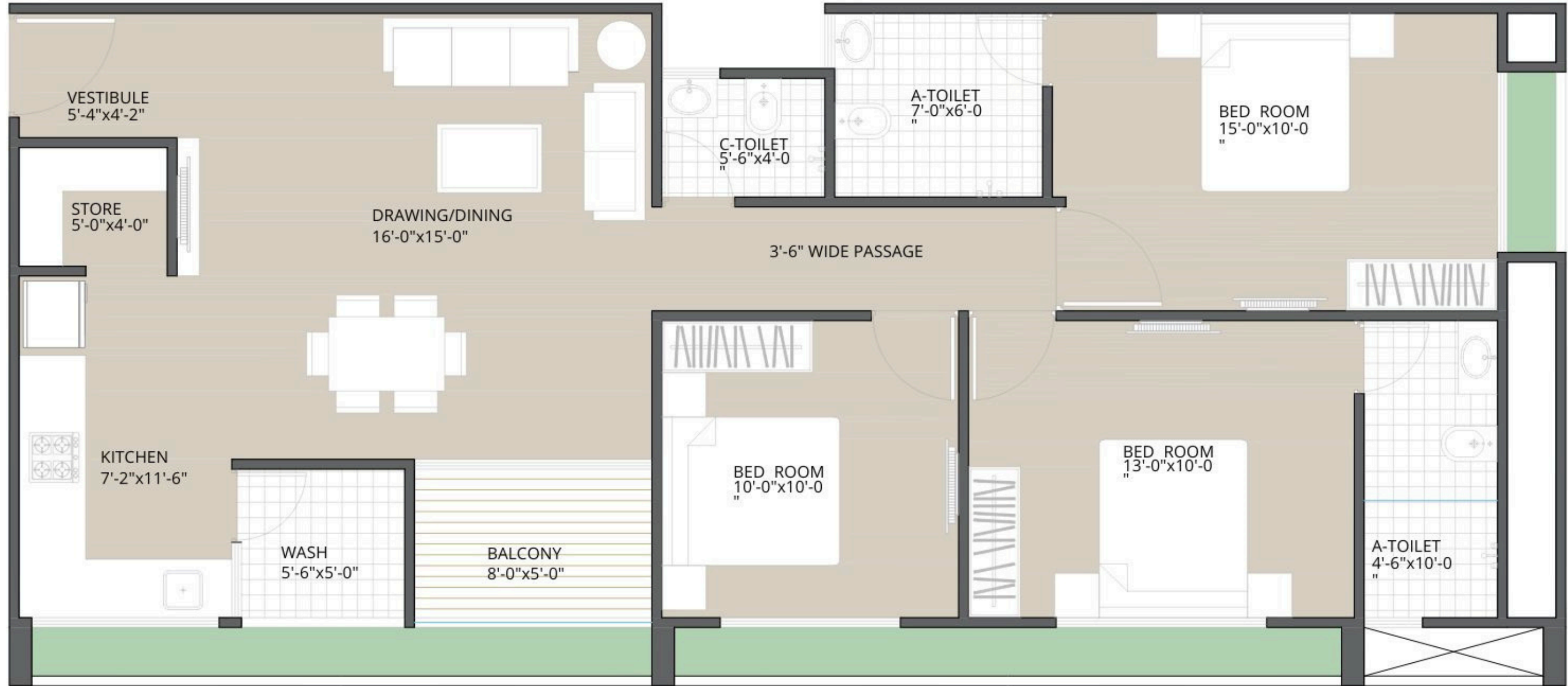
TYPE-A
1881 SQFT

TYPE-B
2043 SQFT
TYPE-C
2097 SQFT
TYPE-D
2007 SQFT

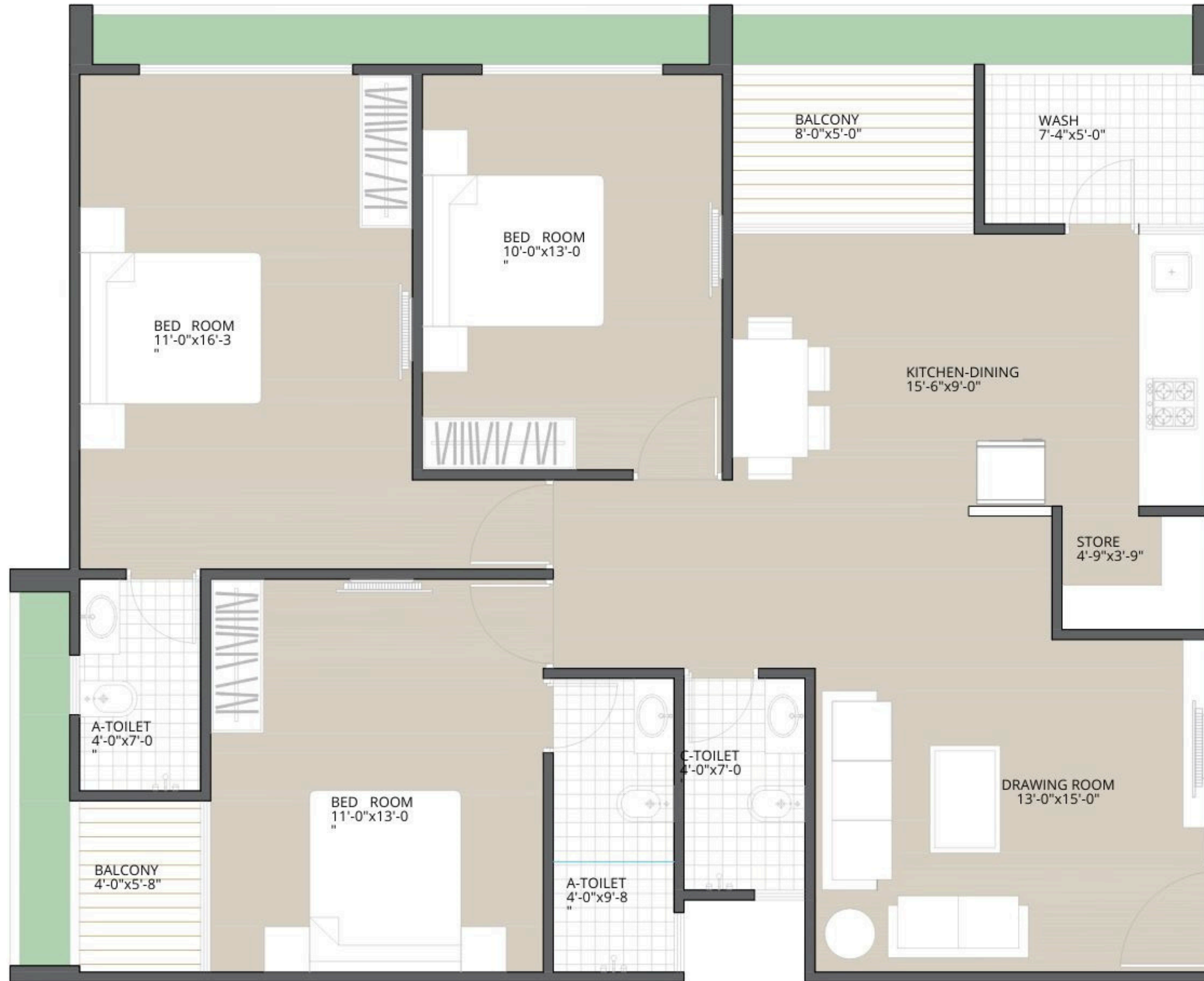


COMMON PLOT
345.76 SYD

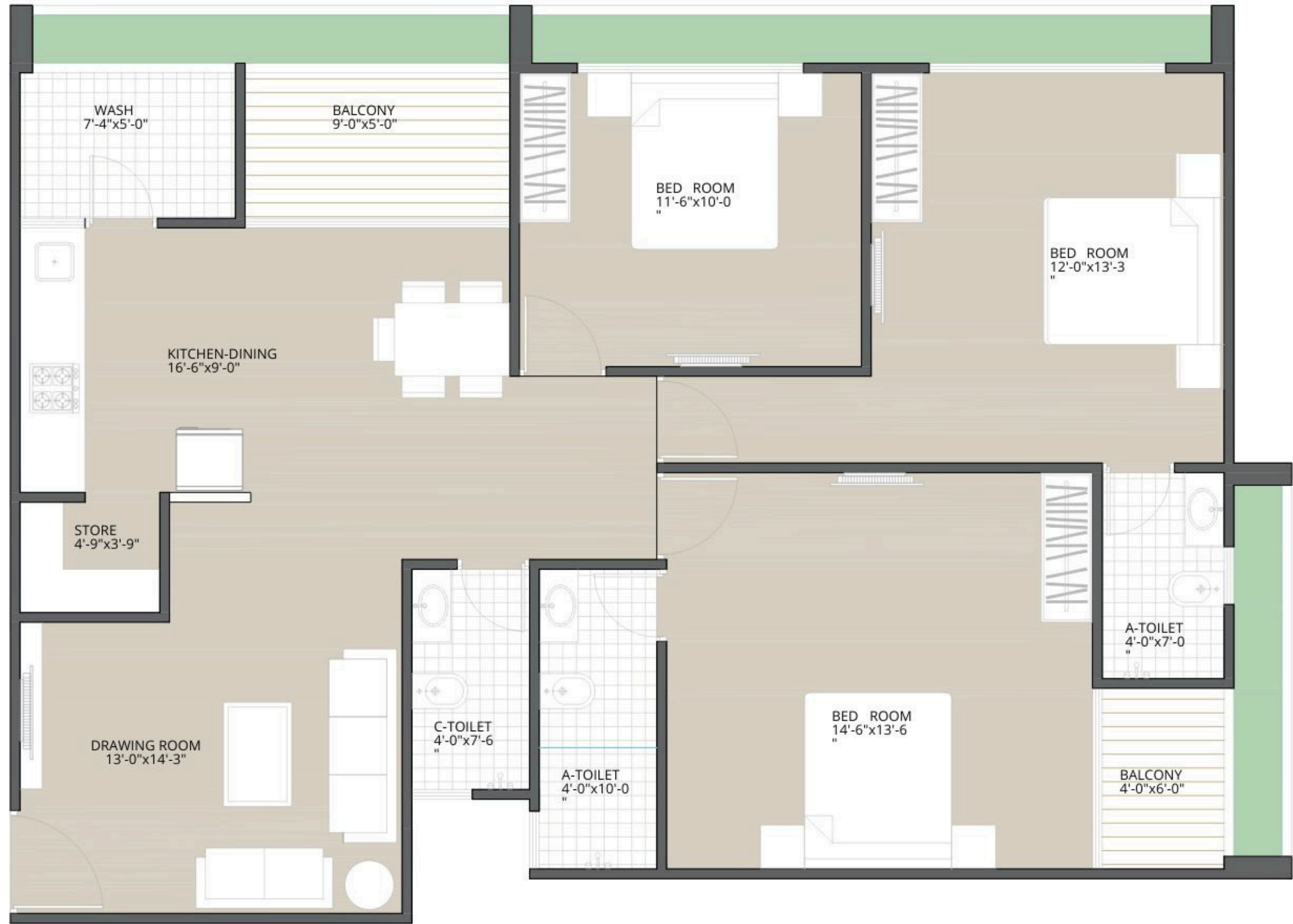
Type A
1881 sq ft.



Type B
2043 sq ft.



Type C
2097 sq ft.



Type D
2007 sq ft.



TOWER	Flat No. 1 (101-1401)	Flat No. 2 (102-1402)	Flat No. 3 (103-1403)	Flat No. 4 (104-1404)
Tower A (Tentative S.B.A)	2043	2043	2097	2007

TOWER	Flat No. 1 (101-1401)	Flat No. 2 (102-1402)	Flat No. 3 (103-1403)	Flat No. 4 (104-1404)
Tower B (Tentative S.B.A)	1881	1881	1881	1881



On the way from Panjrapol Cross Road to Gujarat University, surrounded by iconic landmarks and vibrant city life, unveiling the essence of luxury living.

5

Mins from
C.G. Road

10 Mins
15 Mins

Ashram Road

S.G. Road

In Close
Proximity **to**

Educational Institutes	Public Commute	Religious Spots	Public Park
Gujarat University	BRTS Bus Stop	Dada Saheb Jain Derasar	Law Garden
Ahmedabad University	Metro Station	Shree Kashta Bhajan Hanuman Mandir	Parimal Garden

Specifications

- **Entryways:** Elegant doors featuring a laminate finish and premium hardware for a welcoming first impression.
- **Bathrooms:** Floors and walls adorned with vitrified tiles reaching up to the lintel, complemented by stylish granite basin counters, enhancing every bathroom.
- **Electrical Framework:** Modern modular switches and efficient 3-phase concealed copper wiring ensure safety and convenience across all rooms, including smart provisions for TV, cable, telephone, and WIFI in the living area.
- **Impeccable Finishes Inside and Out:** Interior walls and ceilings are smoothly plastered and finished with putty for a flawless appearance, while external walls receive a double coat of plaster and are adorned with durable, textured acrylic paint.
- **Balconies:** A choice of vitrified tiles or granite flooring creates a stunning outdoor retreat for relaxation and views.
- **Kitchens:** Functional elegance with ceramic tile backsplashes up to the lintel level, sleek vitrified tile flooring, a durable stainless steel sink, and a provision for an R.O. water system for the ultimate culinary experience.
- **Superior Plumbing Solutions:** High-quality CPVC for water supply and PVC for soil, waste, and drainage systems, paired with top-tier sanitary and CP fittings for enduring performance.
- **Wash Areas:** Designed with either vitrified or granite flooring and ceramic tile dado, including a provision for a washing machine, blending functionality with style.
- **Windows:** Powder-coated aluminum sliding windows framed with stone jambs, offering durability, style, and panoramic views.
- **Floorings:** Living, dining, and bedroom spaces are graced with luxurious vitrified tiles for a cohesive and elegant aesthetic.
- **Innovative Roofing:** A rooftop finished with China mosaic for aesthetics, coupled with comprehensive waterproofing solutions for ultimate protection and comfort.