



ADDOWN REALTY

— Connecting You To Your Perfect Property —

inspired by  
*nature*

21 STOREYS  
OF EXTRAORDINARY  
LIVING

TAKING YOU  
ON A DELIGHTFUL  
JOURNEY  
TO THE SKIES



## TRANSCENDING THE LIMITS OF ARCHITECTURE

These thoughtfully designed architectural marvels aren't just places to live - they're statements, symbols of success, and testaments to daring dreams.



All sides open



Only 2 units per floor



Spacious balcony of 360 sq.ft



Spacious foyer gives better air ventilation



ALABHYA

**SOARING**  
TO THE NEW  
HEIGHTS OF  
LUXURY





# THE GLORY OF HAVING YOUR OWN PIECE OF THE SKY

From panoramic vistas to exclusive amenities, these apartments redefine luxury living in the most epic way possible. And the sense of pride that comes with calling these magnificent residences your home is simply priceless.

ADORNED  
WITH NATURE'S  
CHARMING  
ELEMENTS



SOAK IN  
SPLENDOR  
THAT GREET'S  
WITH FLAIR



# SERENE GREENERY

THAT SOOTHES  
THE SOUL





EXPERIENCE  
PLEASURES  
OF RESORT-LIKE  
**LIFESTYLE**

**OPULENT  
AMENITIES**

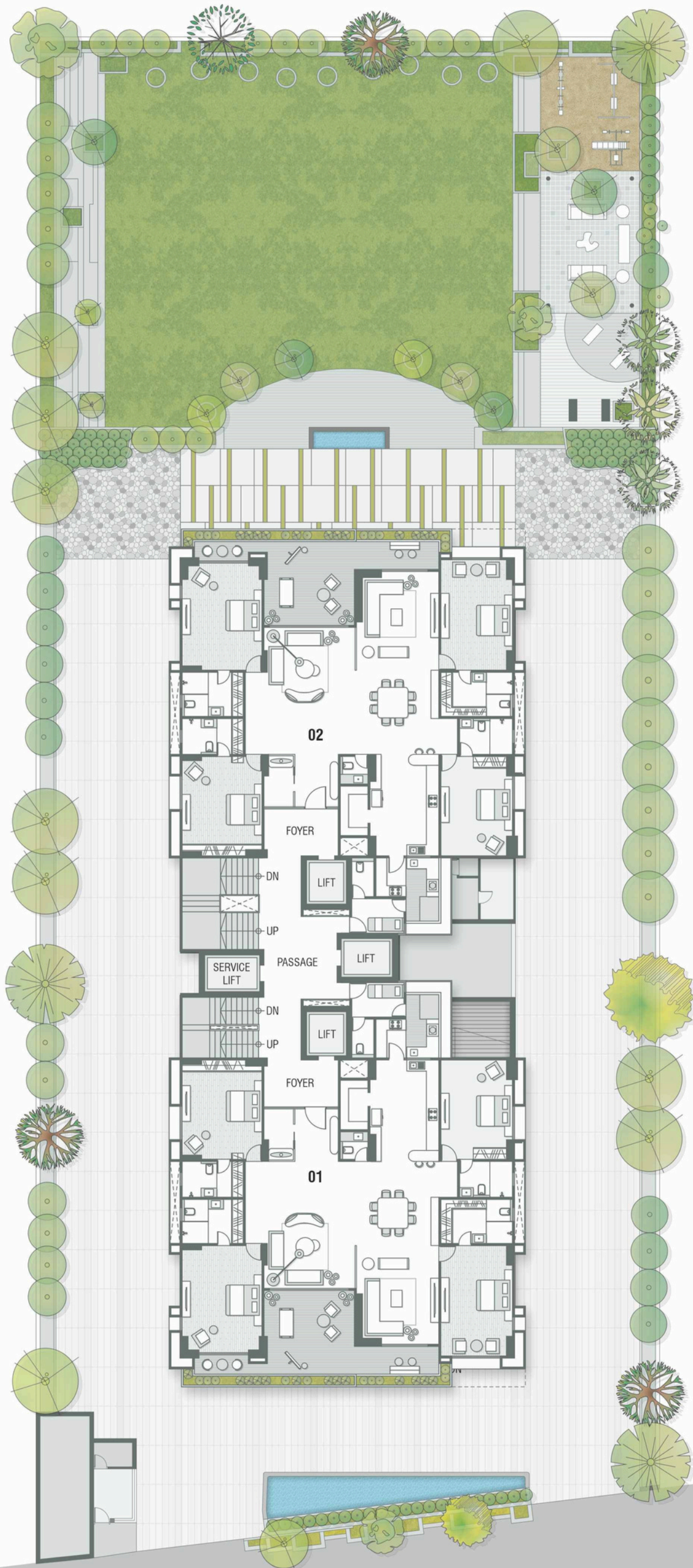


**WHERE  
ELEGANCE  
COMES ALIVE**

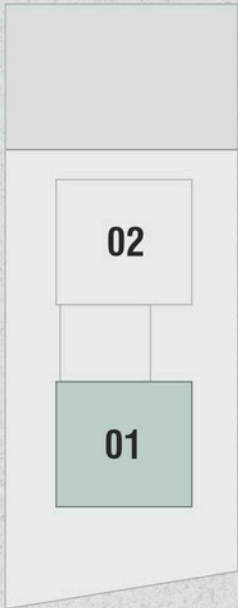
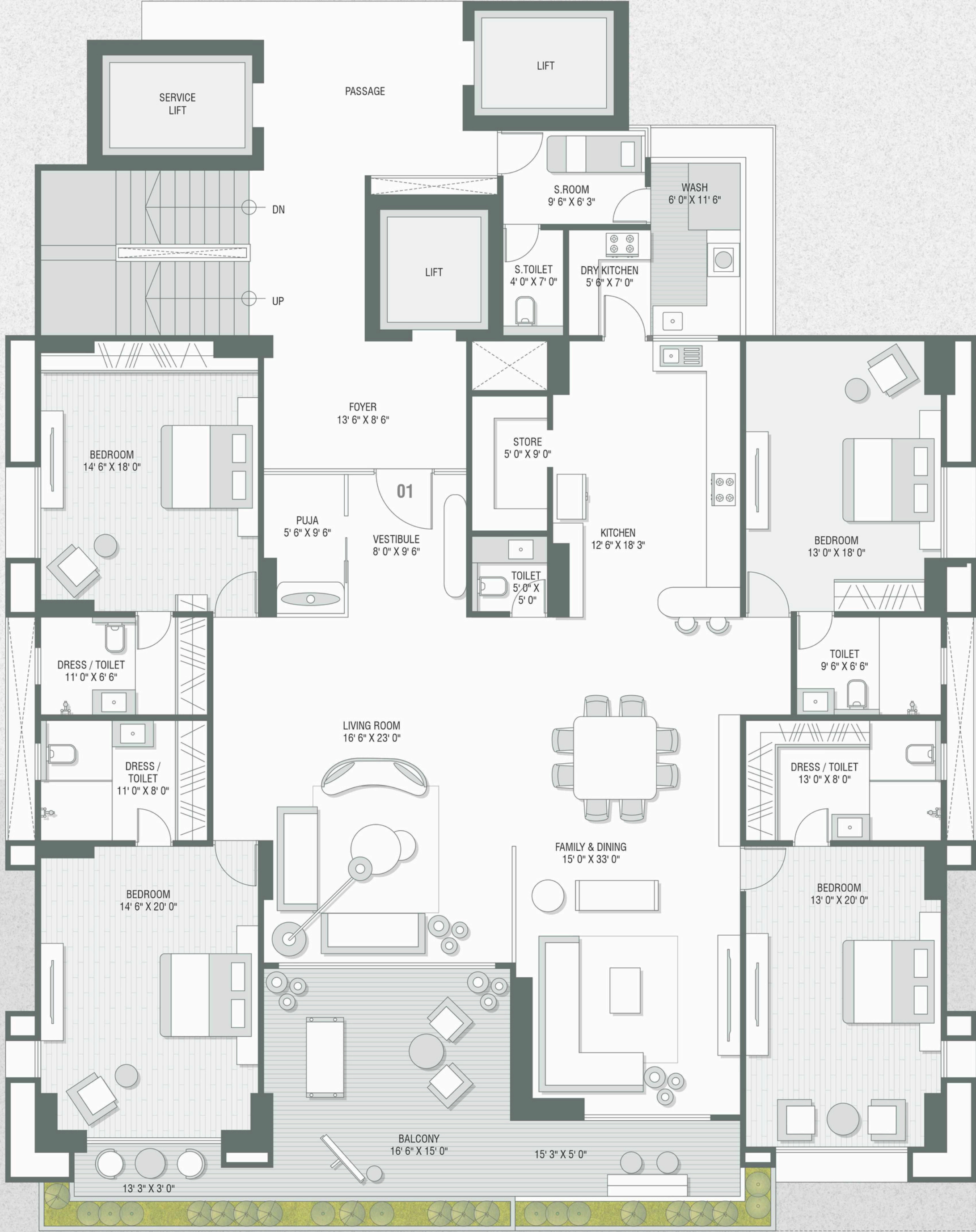
The open-concept living space, adorned with floor-to-ceiling windows, allows for ample natural light and pristine breeze. It's like a plain canvas waiting to be turned into a masterpiece of your choice.

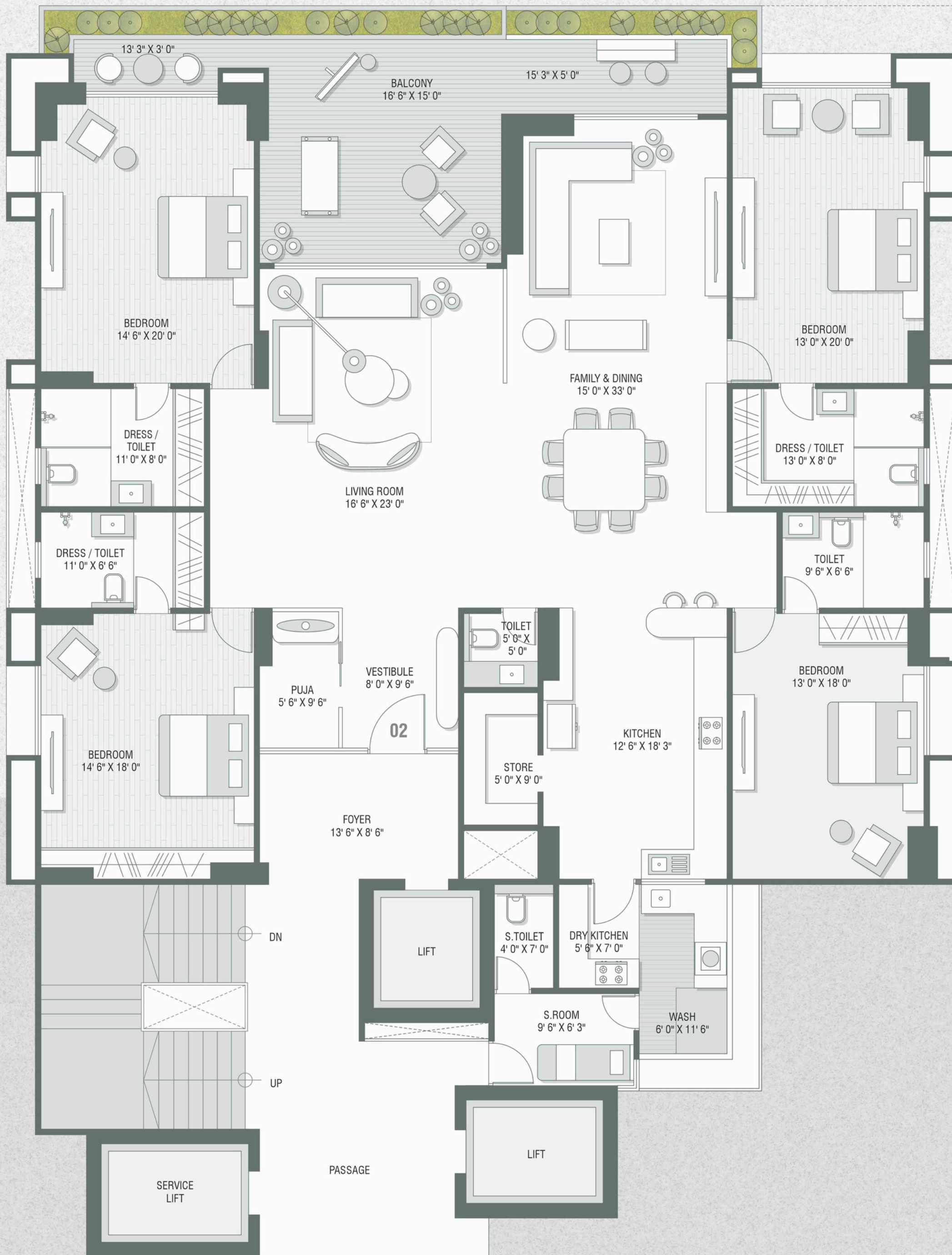


TYPICAL  
FLOOR PLAN

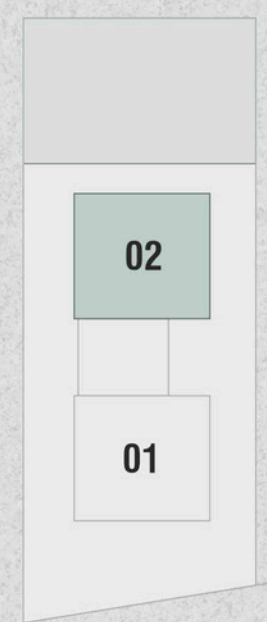


4 BHK  
FLOOR PLAN





4 BHK  
FLOOR PLAN





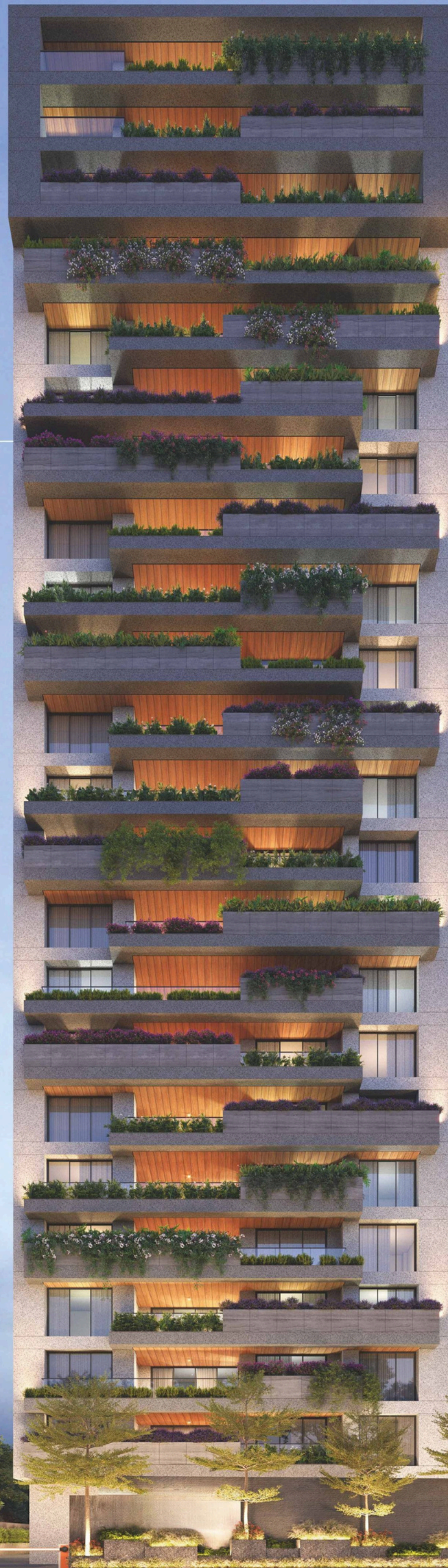
COUNT  
MEMORIES  
NOT THE  
CALORIES

FROM SUNRISE  
**TO SUNSET,**  
THE BEAUTIFUL  
VIEWS AWAIT



THE PRIVILEGE  
OF LIVING  
AMONGST  
THE CLOUDS

'Feeling on top of the world' is no longer just a phrase; it's your reality. From here, the world feels limitless, and the possibilities of joy are endless.



# SPECIFICATION

---

## FLOORING

- Italian Marble in the Vestibule, Drawing Room, Living Room, Dining area
- Premium Italian Vitrified tile flooring for all the bedrooms
- Granite platform with sink and tile dado in kitchen
- Kota Stone in store & wash area

## DOORS & WINDOWS

- Main entrance door with veneer on both sides
- Flush doors in all bedrooms, bathrooms, kitchen & wash-yard
- Windows with high quality domal aluminum section & toughened glass
- Fire resistance door to the wash-yard

## BATHROOMS / TOILET

- High quality branded Fittings ( Kohler or equivalent )
- Anti-skid tile flooring

## ELECTRICAL

- Premium quality brand switches.
- Concealed ISI copper wiring with 3 phase connection.

## HVAC

- VRV provision
- Heat-pump provision

## PROJECT FEATURES

- Only 2 Apartments per floor
- Private foyer for each apartment
- Kids play zone
- Yoga deck
- Gazebo sit-out for senior citizens
- 4 high-speed lifts (2 private,1 service stretcher lift and 1 guest lift.)
- Private lift to apartment with restricted access
- Separate entry for servants directly to the wash area
- 10.6" ft height in apartment
- No common walls between apartments
- 24/7 CCTV Surveillance

---

**RULES & REGULATIONS :** • All rights reserved to Developer for any changes in plan & specification. • Irregular payment shall cause cancellation of booking. • Possession of the Apartment shall be delivered only after full payment. • Change in external elevation shall not be permitted. Internal changes shall be done only with prior permission & shall be charged extra in advance. • Details & dimensions in model & brochure are indicative and for the tentative representation only which should not be treated as legal document and/or consumer act. • Variation in shades & sizes likely in Vitrified & Glazed tiles due to constraints of availability & manufacturing. • Any additional charges or duties levied by the Govt./Local authorities during or after the completion of the scheme will be borne by the purchaser.

---

**Architect**  
Tranquil the design wave

**Structural Consultant**  
Bhoomi Consultant

---

