



ADDOWN REALTY  
— Connecting You To Your Perfect Property —

WELCOME TO  
4 BHK TIMELESS LIVING

LIVE  
LIFE  
UP

**20 STOREYS**  
high rise building

**GLASS**  
Facade

**FREESTANDING**  
Towers

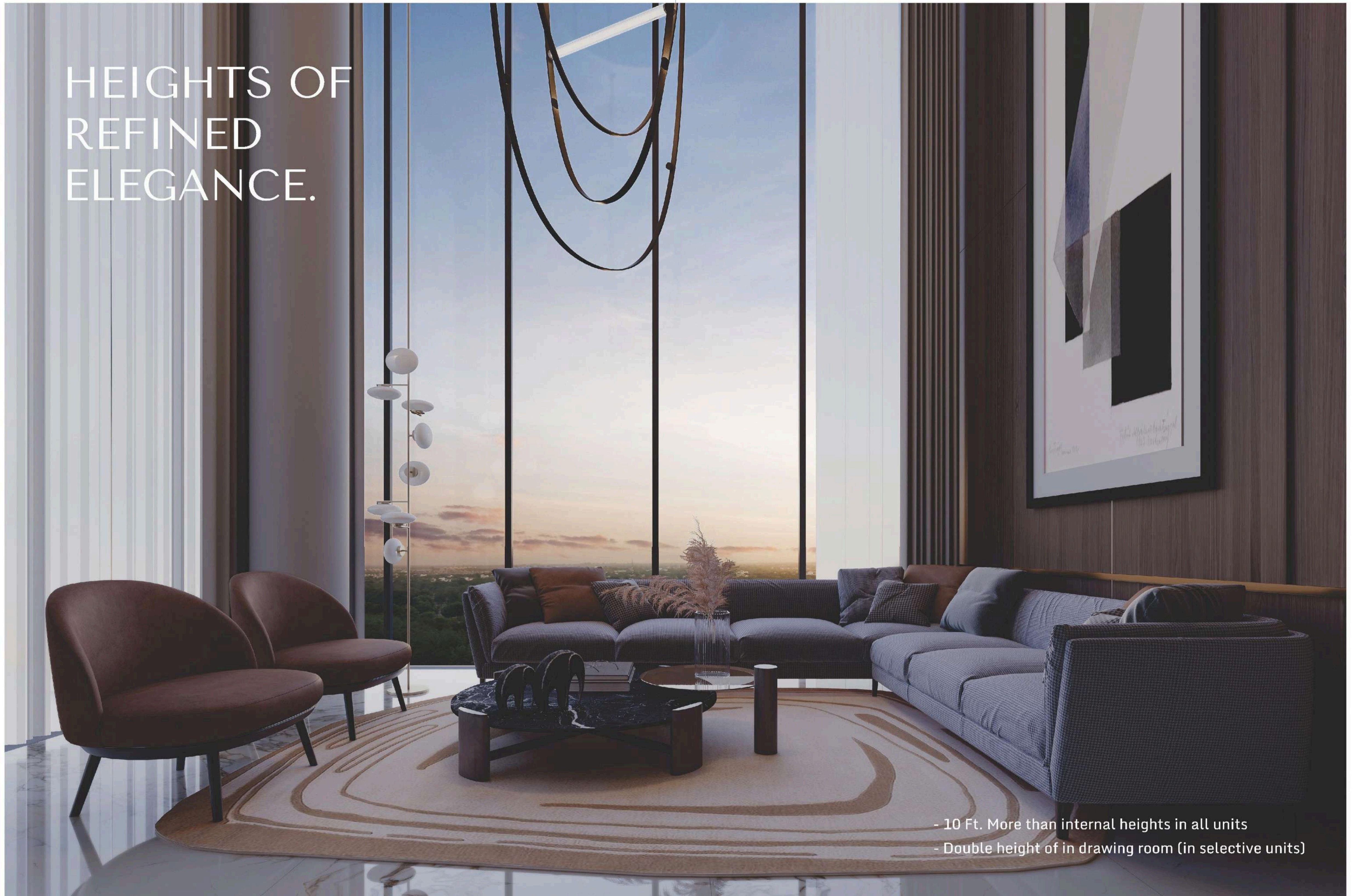
**COLUMN LESS STRUCTURE**  
for formal living /  
family living / dining  
areas

**2 UNITS**  
on each floor

**DOUBLE BASEMENTS**  
for parking



HEIGHTS OF  
REFINED  
ELEGANCE.



- 10 Ft. More than internal heights in all units  
- Double height of in drawing room (in selective units)



CULTIVATING  
LANDSCAPED  
SPREADS.

- 4 towers in 11760 Sq. yds.  
- 50% Landscaping in total plot

LIVE IN  
UNBOUNDED  
ACCESSIBILITY.



# FEATURES

## ELEVATORS

Fully highspeed automated elevators

2 owners elevators (in all towers)

1 service elevator (in all towers)

Key card + fingerprint accessed elevators

## ENTRANCE

Centralised double heighten welcome canopy (welcome foyer)

Reception area (in all towers)

Waiting lounge (in all towers)

## FLOOR

Personal foyer in all units

Exclusive floor planning of duplex



# AMENITIES

## LEISURE

Water body | Cafeteria (Centrally Ac) | Clubhouse (Centrally Ac) | Box cricket  
Indoor games (Pool Table, Table Tennis, Board games) | Women chitchat area  
Multi game court (Basketball, Volleyball, Tennis) | Senior citizen area  
Salon space | Home theater | Library | Swimming Pool | Children play area

## CELEBRATION

Banquet hall (Centralised Ac) | Terrace party place area | Terrace garden  
Barbeque area | Open space for festivals

## HEALTH

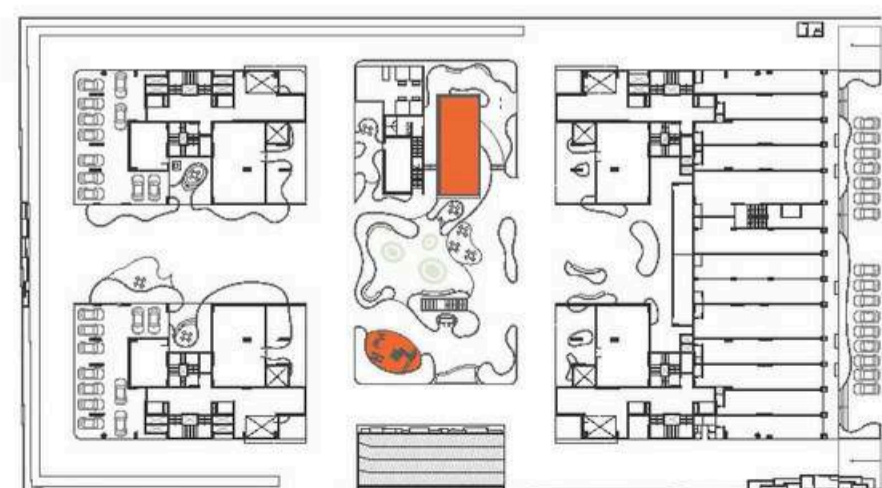
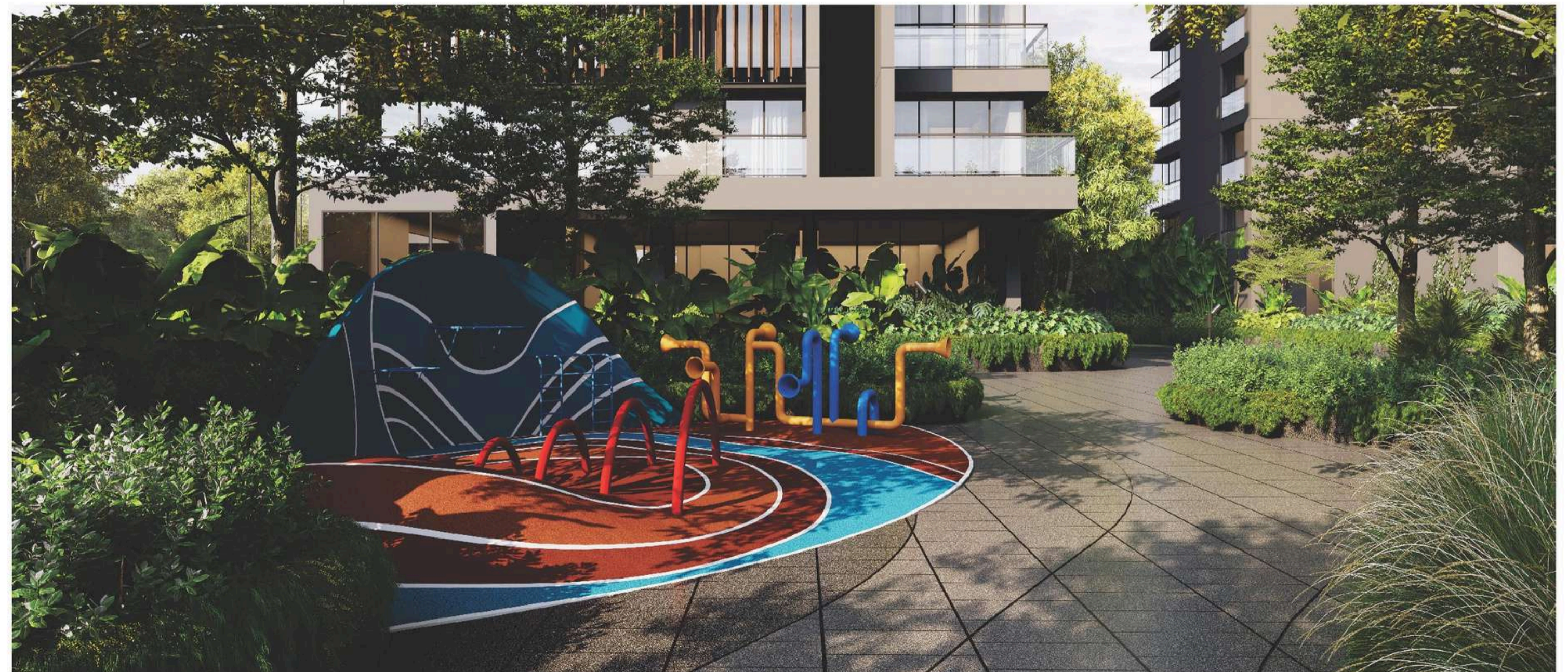
Gymnasium | Yoga - meditation deck

## SECURITY

Security cabin in entrance | Boom barrier vehicle entry | High grade security  
Extremity staircase (emergency) | Video door phone | CCTV in all common area

## PLUSES

Temple | High speed electric vehicle charging (in basement) | Drop off zone  
Pressurised car washing (in basement) | Solar panels in all blocks  
Pressurised water distribution | Generator power backup for common amenities  
Rain water harvesting | Waste disposal room

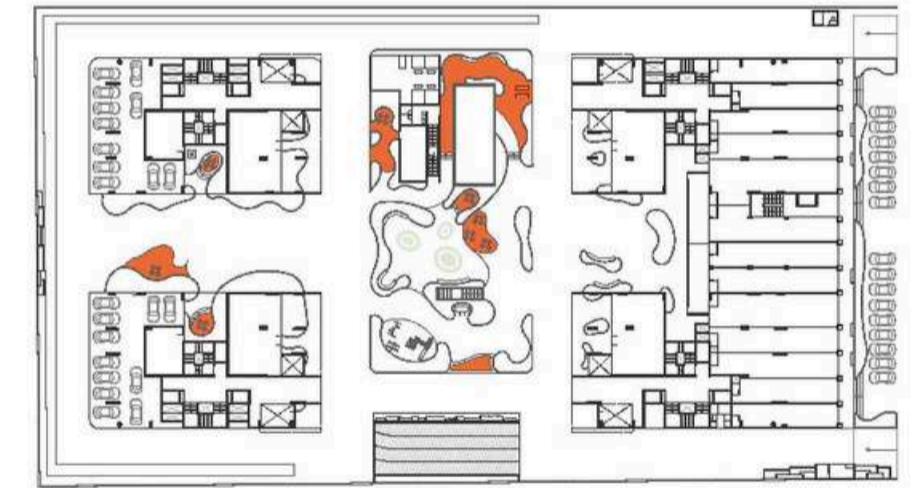
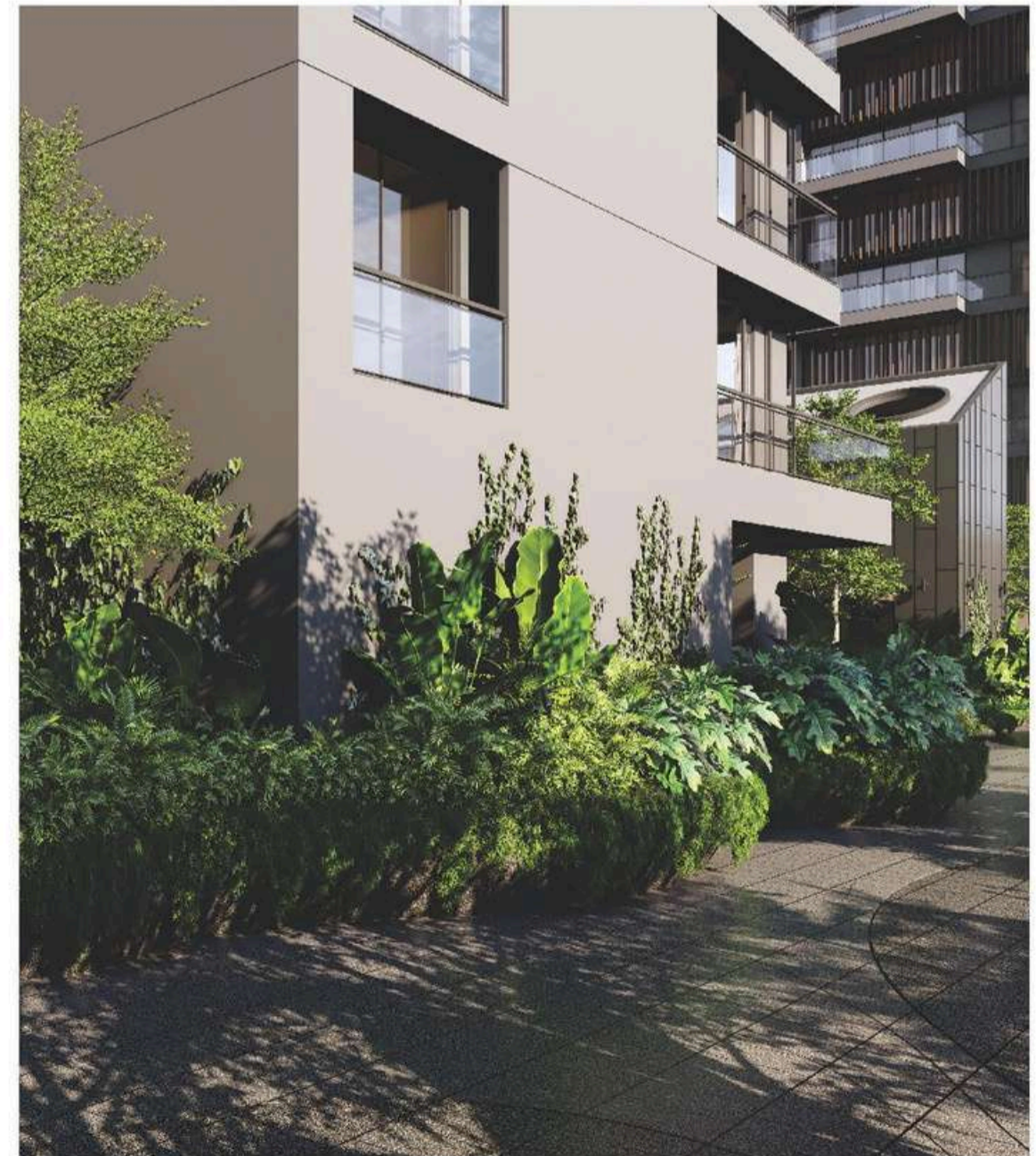
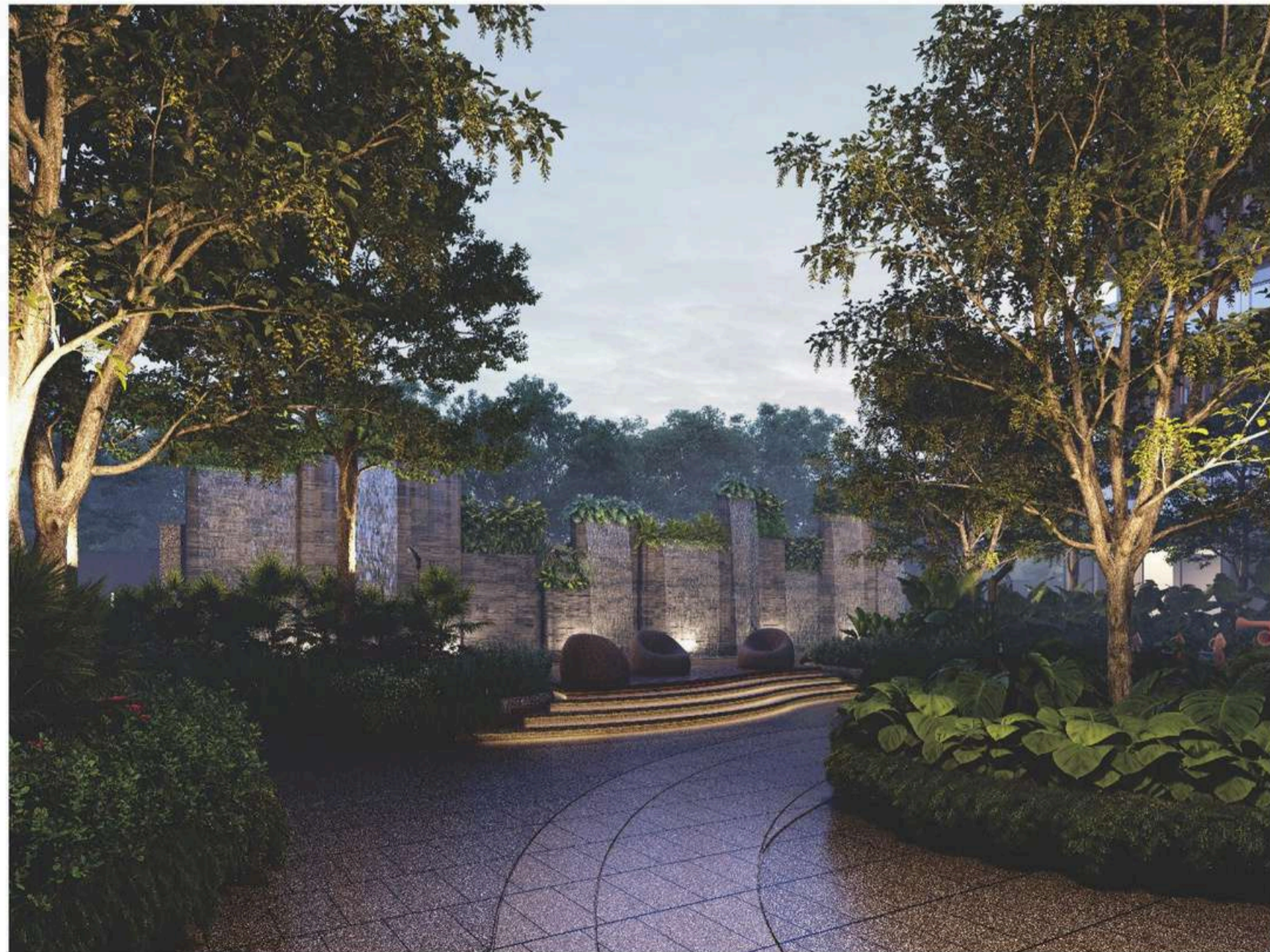


ENTER  
INTO ELEGANT  
REALMS.





TURN TO  
UNWINDING  
MODES.

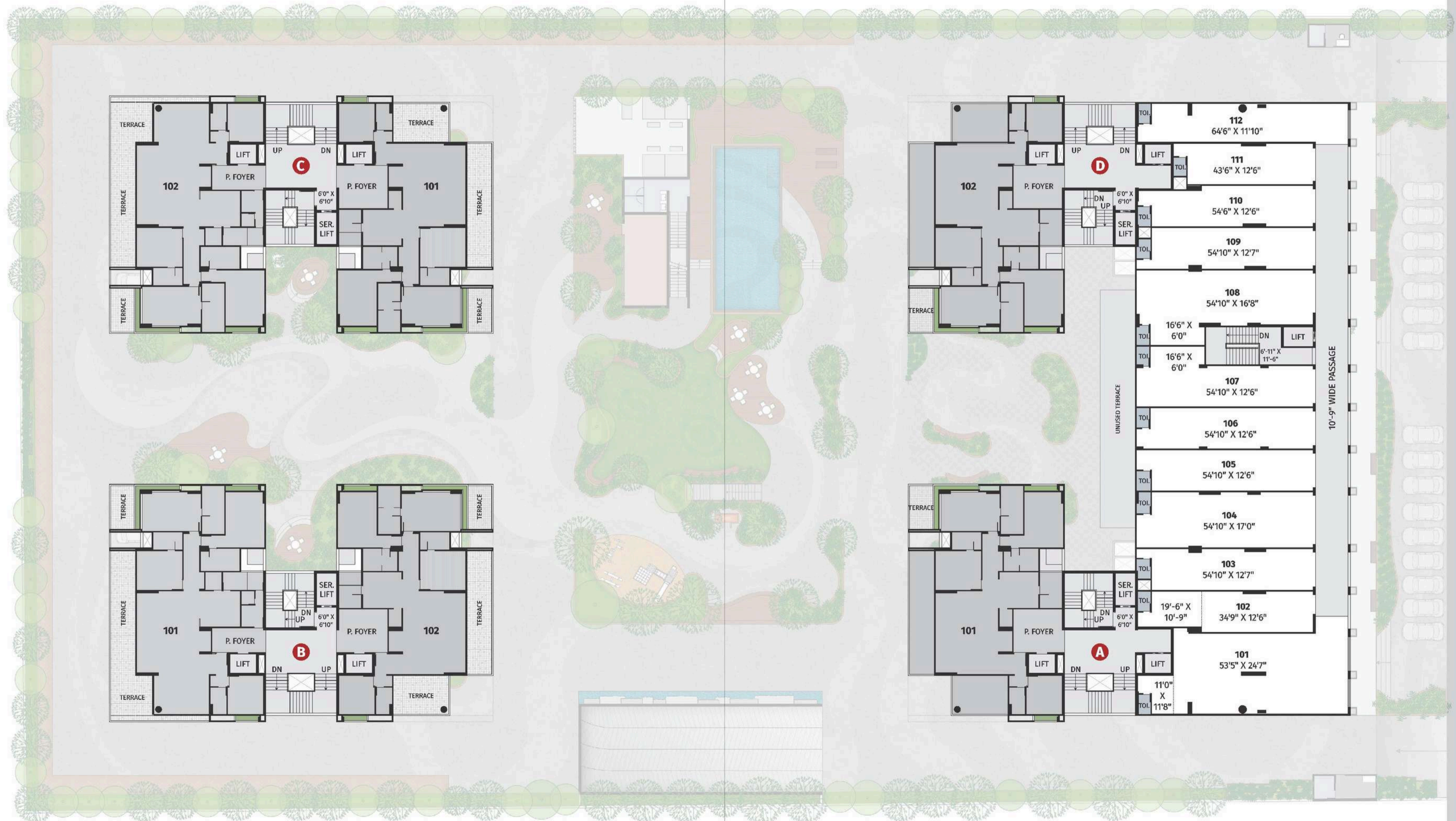


# GROUND FLOOR



# FIRST FLOOR

Tower A & D

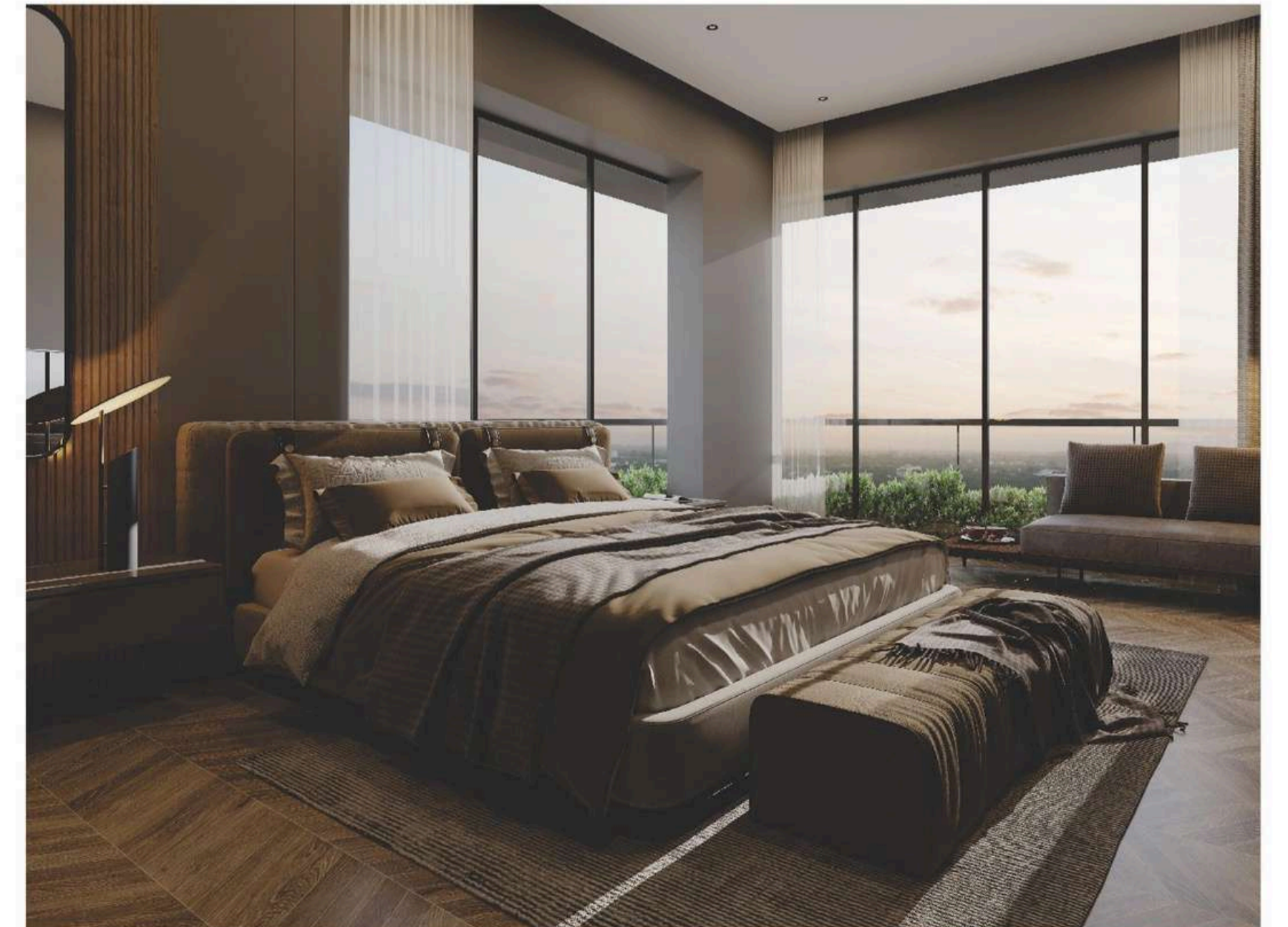


# FIRST FLOOR CLUSTER

Tower B & C



DESIGNED  
TO SERVE  
THE AFFLUENT.



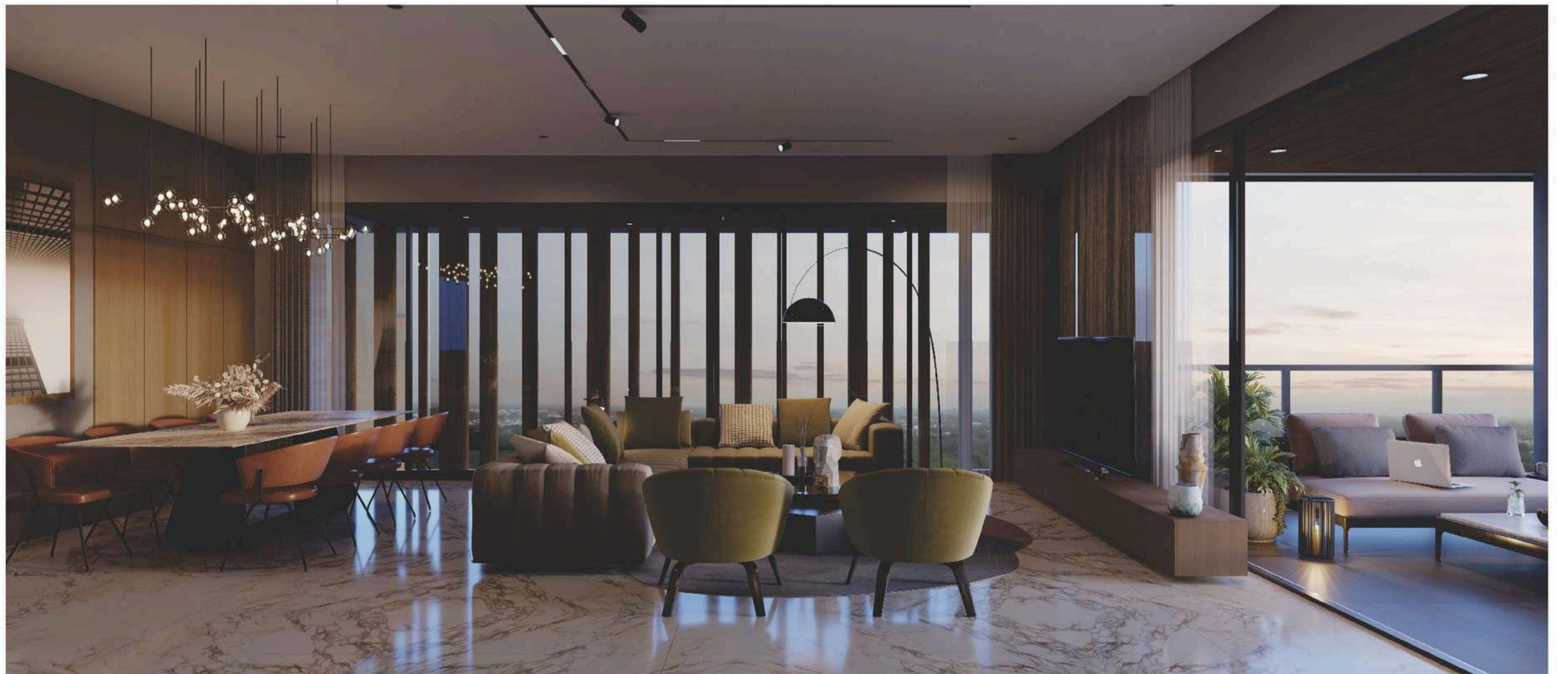
2<sup>ND</sup> | 4<sup>TH</sup> | 6<sup>TH</sup> & 8<sup>TH</sup> FLOOR



3<sup>RD</sup> | 5<sup>TH</sup> & 7<sup>TH</sup> FLOOR



PLANNED  
FOR ELEVATED  
LIVING.



9<sup>TH</sup> | 11<sup>TH</sup> | 12A<sup>TH</sup> | 15<sup>TH</sup> & 17<sup>TH</sup> FLOOR



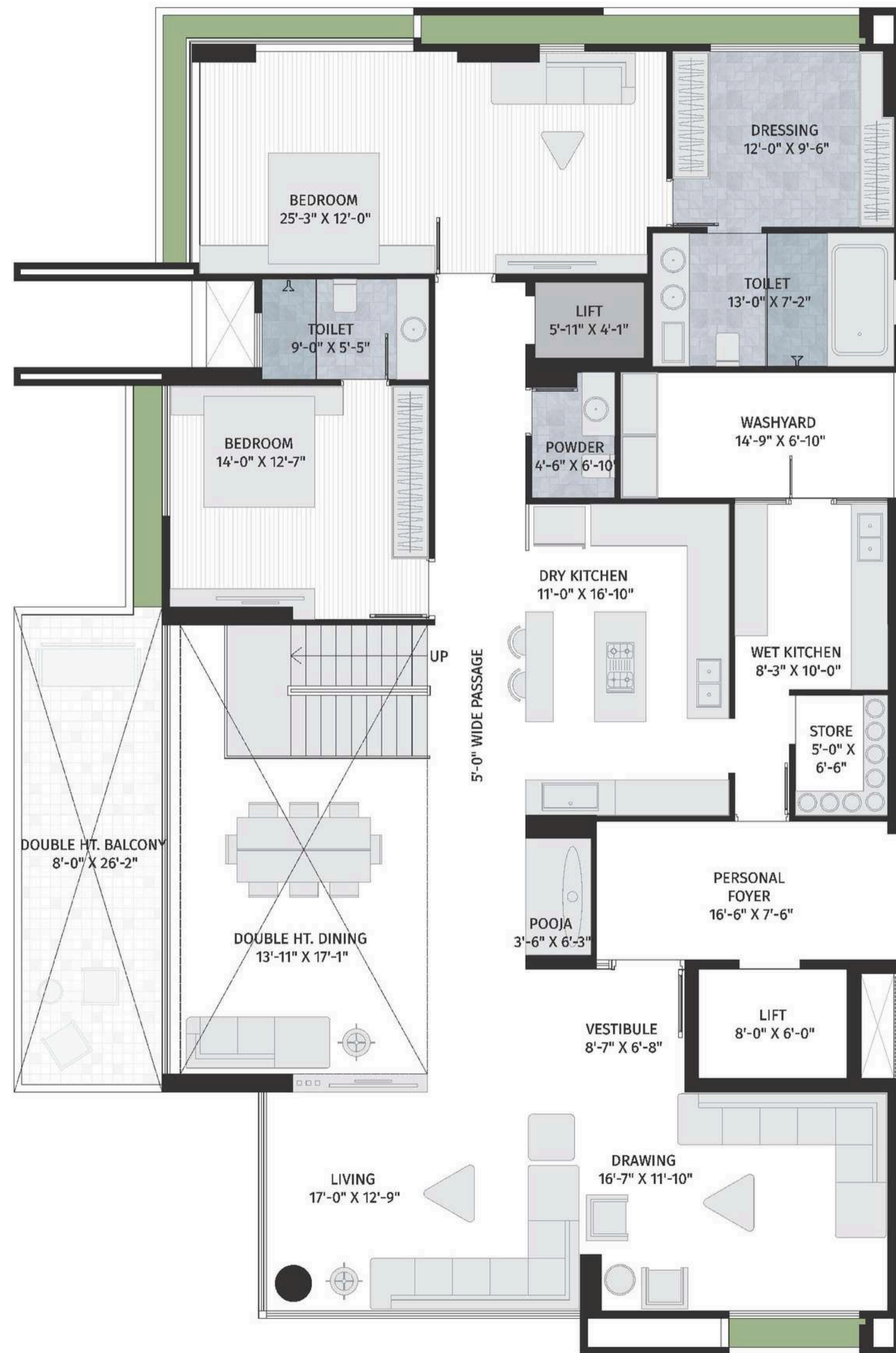
10<sup>TH</sup> | 12<sup>TH</sup> | 14<sup>TH</sup> | 16<sup>TH</sup> & 18<sup>TH</sup> FLOOR



ENGINEERED  
FOR MODERN  
NEEDS.



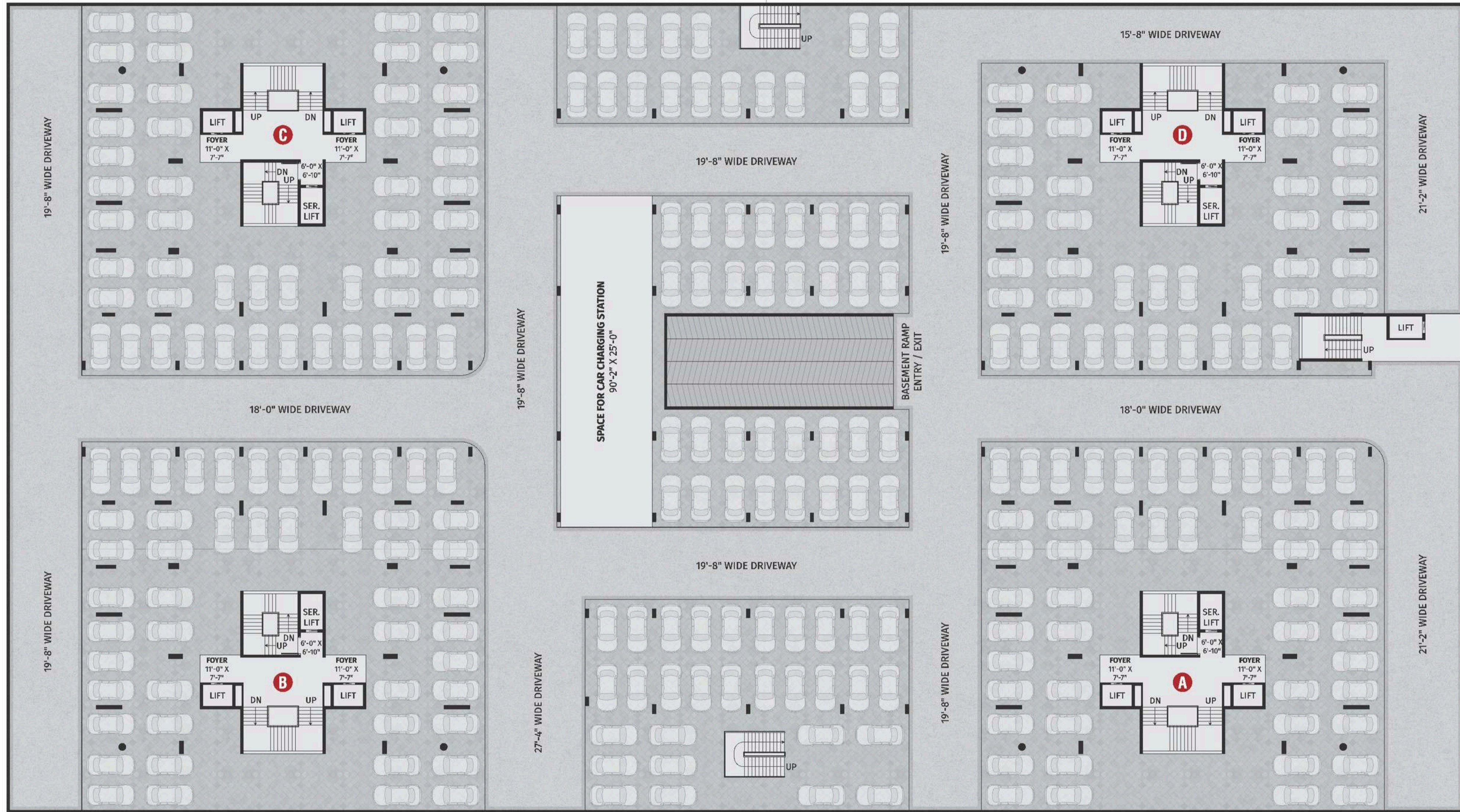
19<sup>TH</sup> FLOOR



20<sup>TH</sup> FLOOR



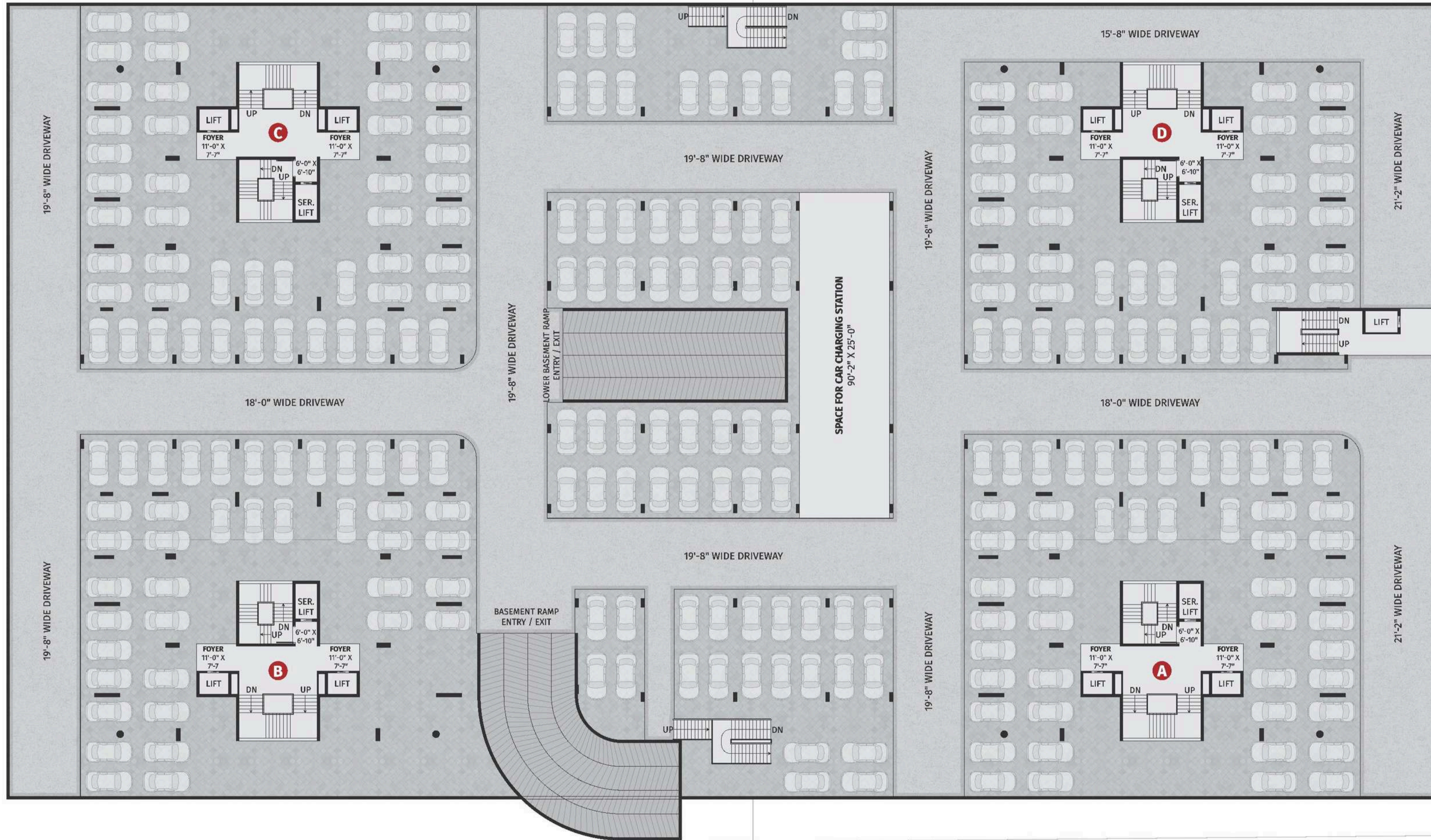
# LOWER BASEMENT



ROAD



# UPPER BASEMENT



ROAD



# SPECIFICATIONS

## FLOORING

- 3 choices of Italian marble in living room, dining, drawing and kitchen.
- Exclusive large size vitrified tiles in bedrooms.
- Anti skid / rustic tiles in balcony.
- 3 quartz choice (as per Italian marble) as kitchen platform.
- Granite flooring in wash yard.
- All toilets with ceramic tiles flooring.
- Kitchen with tiles till dado in platform area.

## SANITARY & PLUMBING

- All sanitary ware of highest standard: Kohler, Toto, Duravit equivalent.
- Chrome plated toilet fittings.
- All toilets with wall hung water closet and wall hung basin.
- Kitchen area with cold & hot water supply.

## ELECTRICAL

- 3 phase power supply for smooth operation of all electrical appliances & automation system.
- ISI modular switches & ISI certified wires in entire electrical wiring.
- Entire unit safeguarded by ISI marked MCB / ELCB.

## DOOR & WINDOWS

- Main door with wooden flush door with open side polished veneer.
- All internal doors with oil painted flush doors.
- Also provide loose doors with all hardware fittings as per client requirements.
- Sliding aluminum section window: Modiguard, Saint-Gobain in all windows and balcony access doors.

## INTERIOR

- Centralized AC / VRV piping provided in all units.
- Each units are equipped with gas pipeline in kitchen.
- Facility for hot water distribution using heat pump in all units.

