



ADD@WN REALTY

— Connecting You To Your Perfect Property —



KILLER

MOBILE STORE

LEVI'S

INFOTECH

NIKE

Reebok



AMENITIES



Decorative
Main Gate



Zula Court



Garden



Boom
Barricade Gate



Elegant
Entrance Foyer



24x7 CCTV
Surveillance



Security Cabin



Solar Panel



Fire Safety



24 Hrs.
Water Supply



Children
Play Area



Senior Citizen
Sitting



Allotted Parking



24X7 Power
Backup

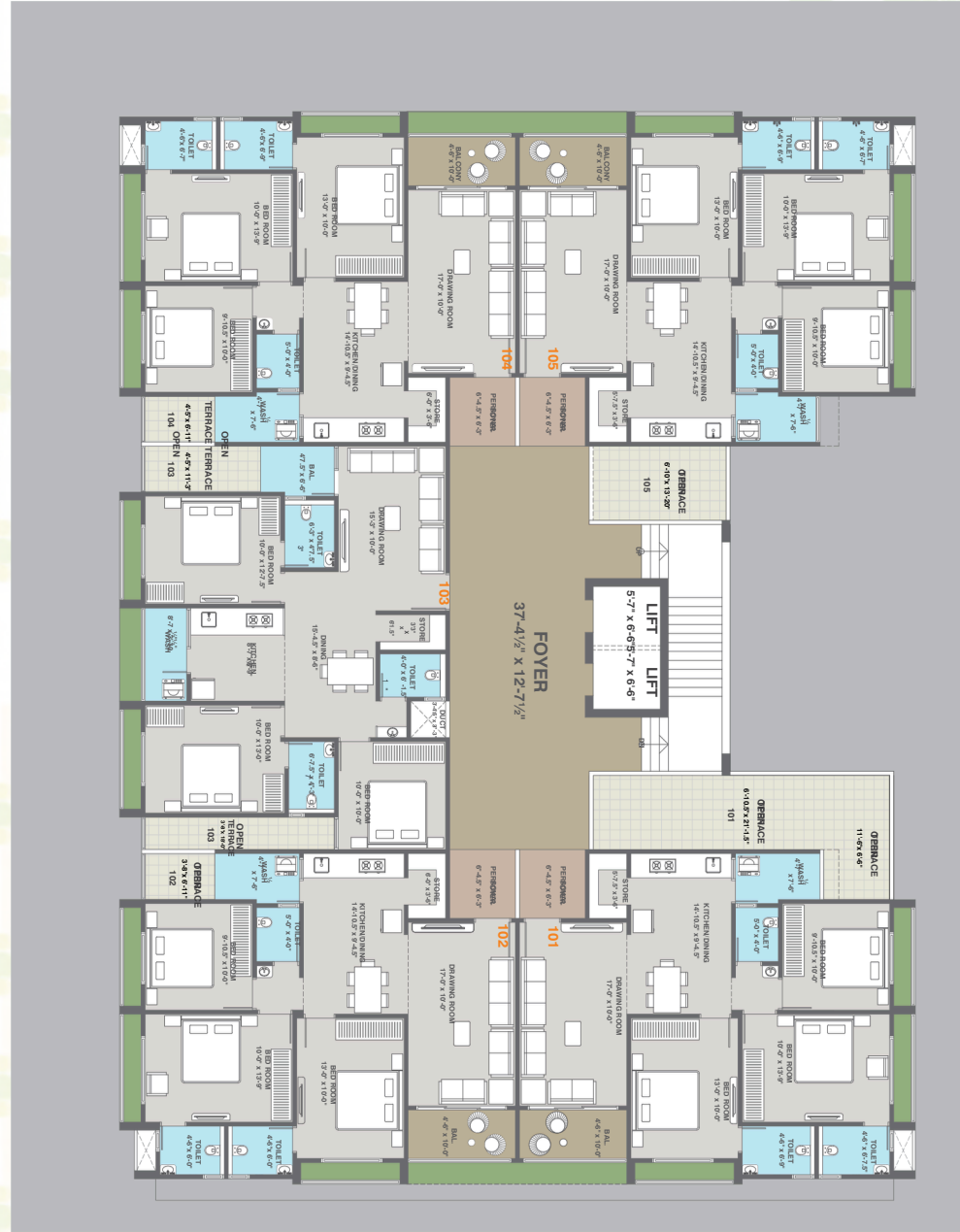
BASEMENT PLAN



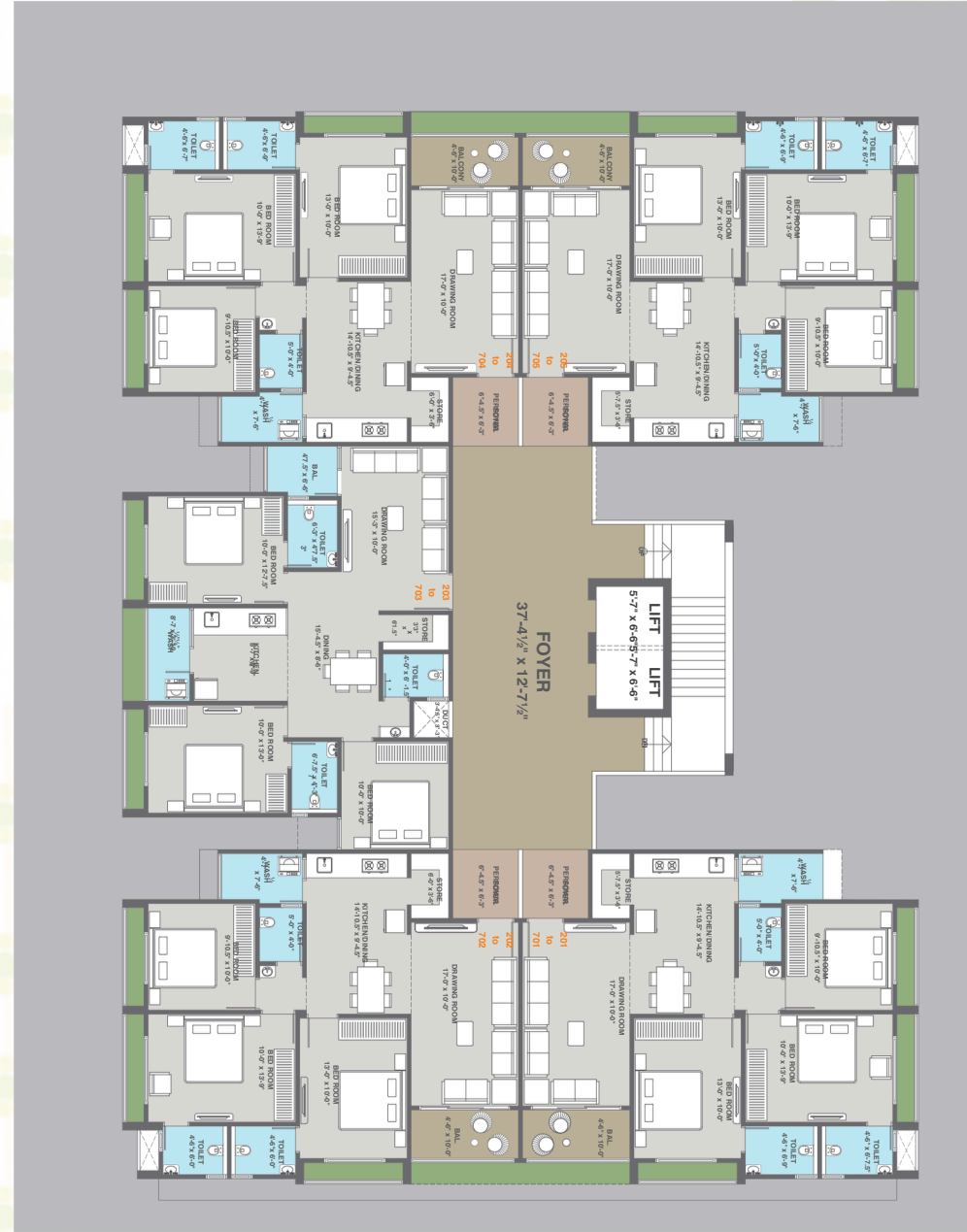
GROUND FLOOR PLAN



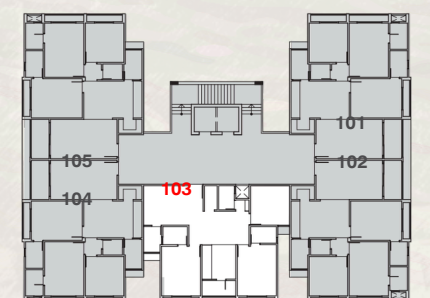
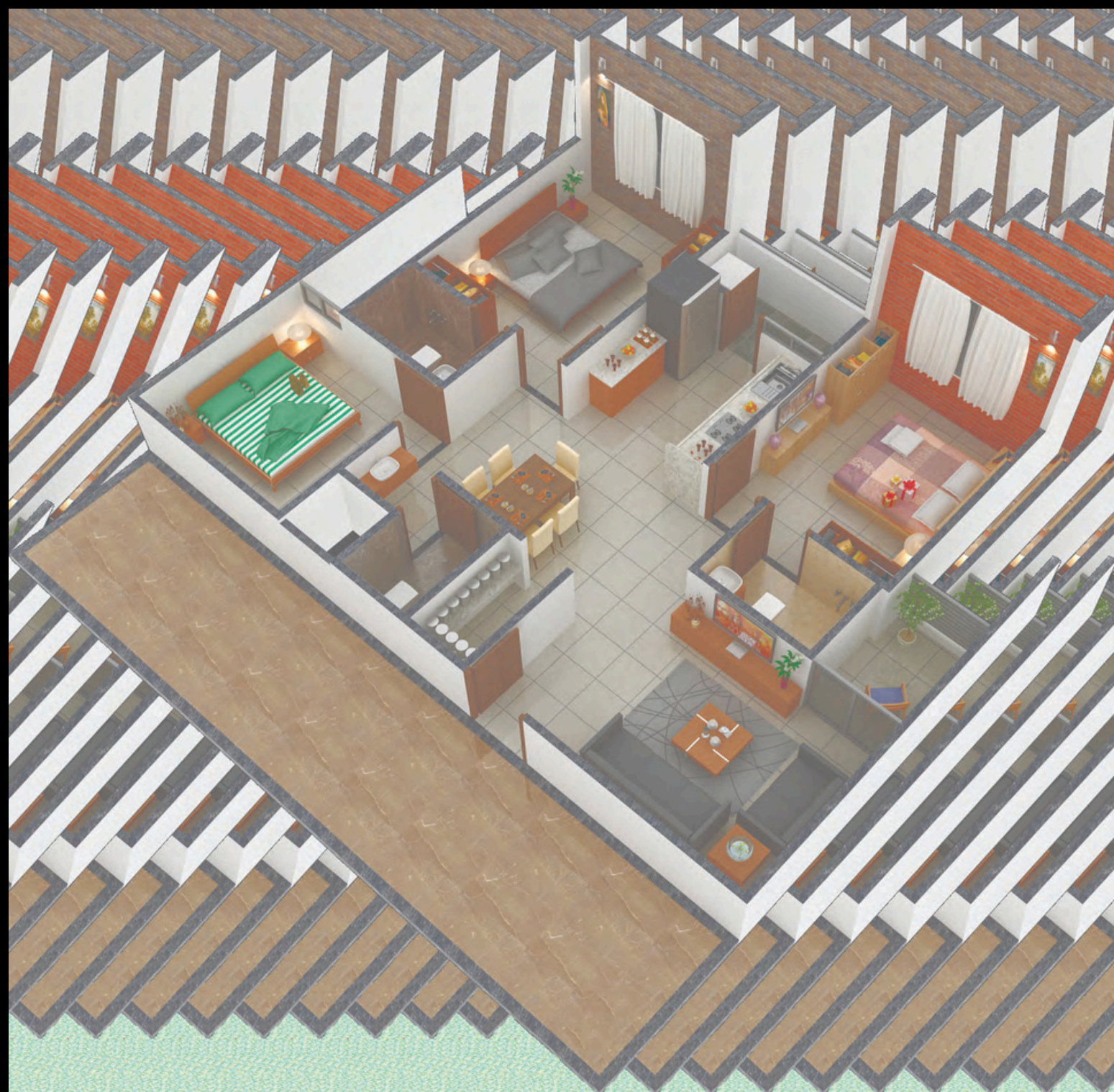
FIRST FLOOR PLAN



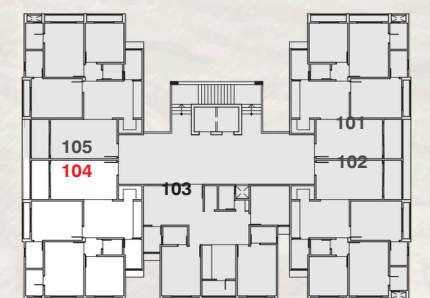
TYPICAL FLOOR PLAN

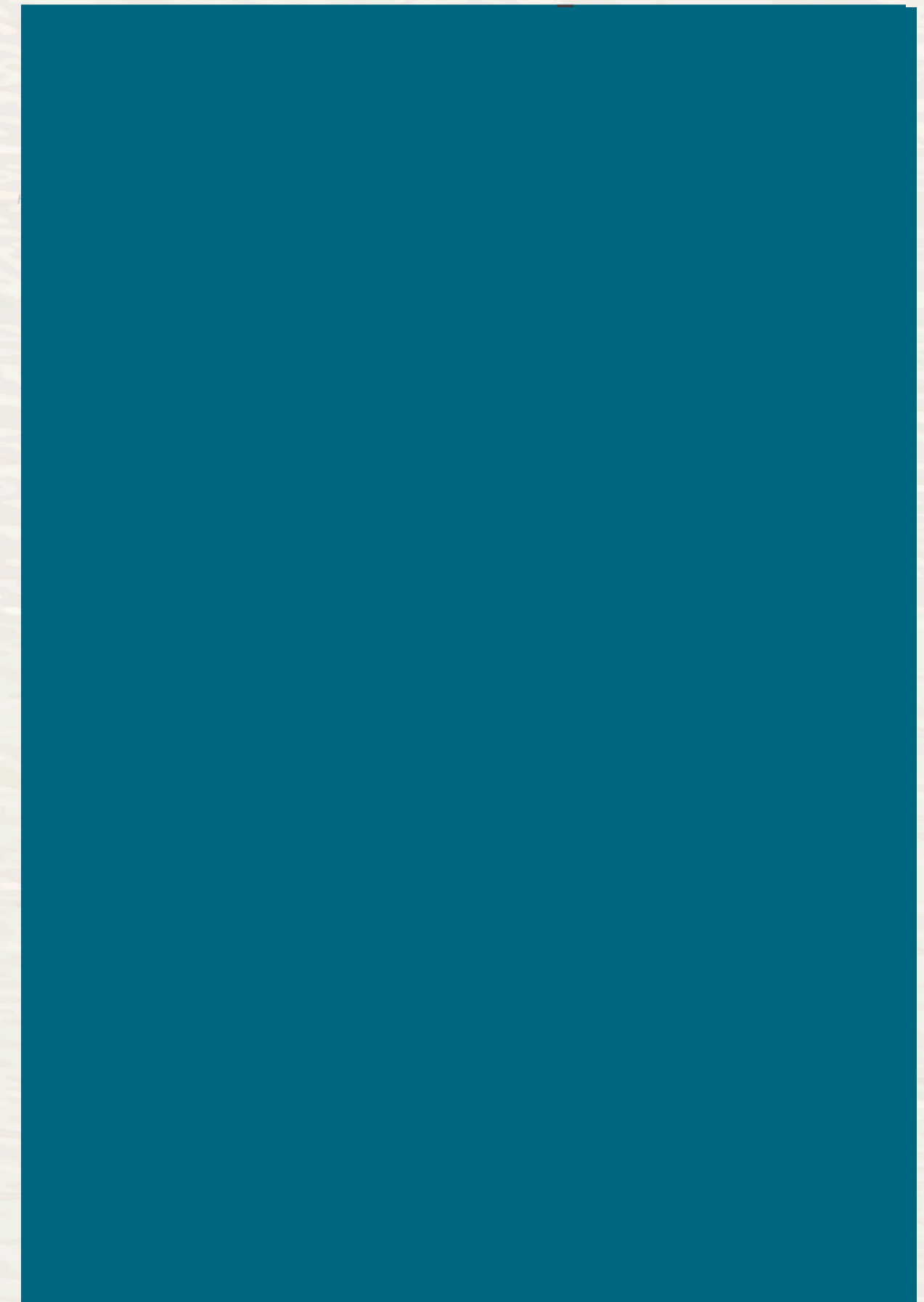


UNIT PLAN



UNIT PLAN





SPECIFICATION

STRUCTURE :

Earthquake Resistant R.C.C. frame structure as per new bylaws.

FLOORING :

Premium quality vitrified tiles in entire apartment

WALL FINISH :

Internal mala plaster with white finish putty.
External double coat sand faced with acrylic paints.

TOILETS AND BATH FITTINGS :

Glazed tiles of leading brand in floor & dado up to beam bottom level.
C.P. fittings of leading brand.

KITCHEN :

Mirror polished granite platform with SS sink.

DOORS AND WINDOWS :

Decorative wooden main entrance door.
All other doors of wooden framed with flushed doors.
Powder coated aluminium windows.

SECURITY :

24X7 security guard.
Well-connected CCTV camera for surveillance.

ELECTRIFICATION :

Concealed copper wiring with adequate electric points.
ELCB & MCB provision for maximum safety.
Premium quality modular switches & accessories in each apartments.