

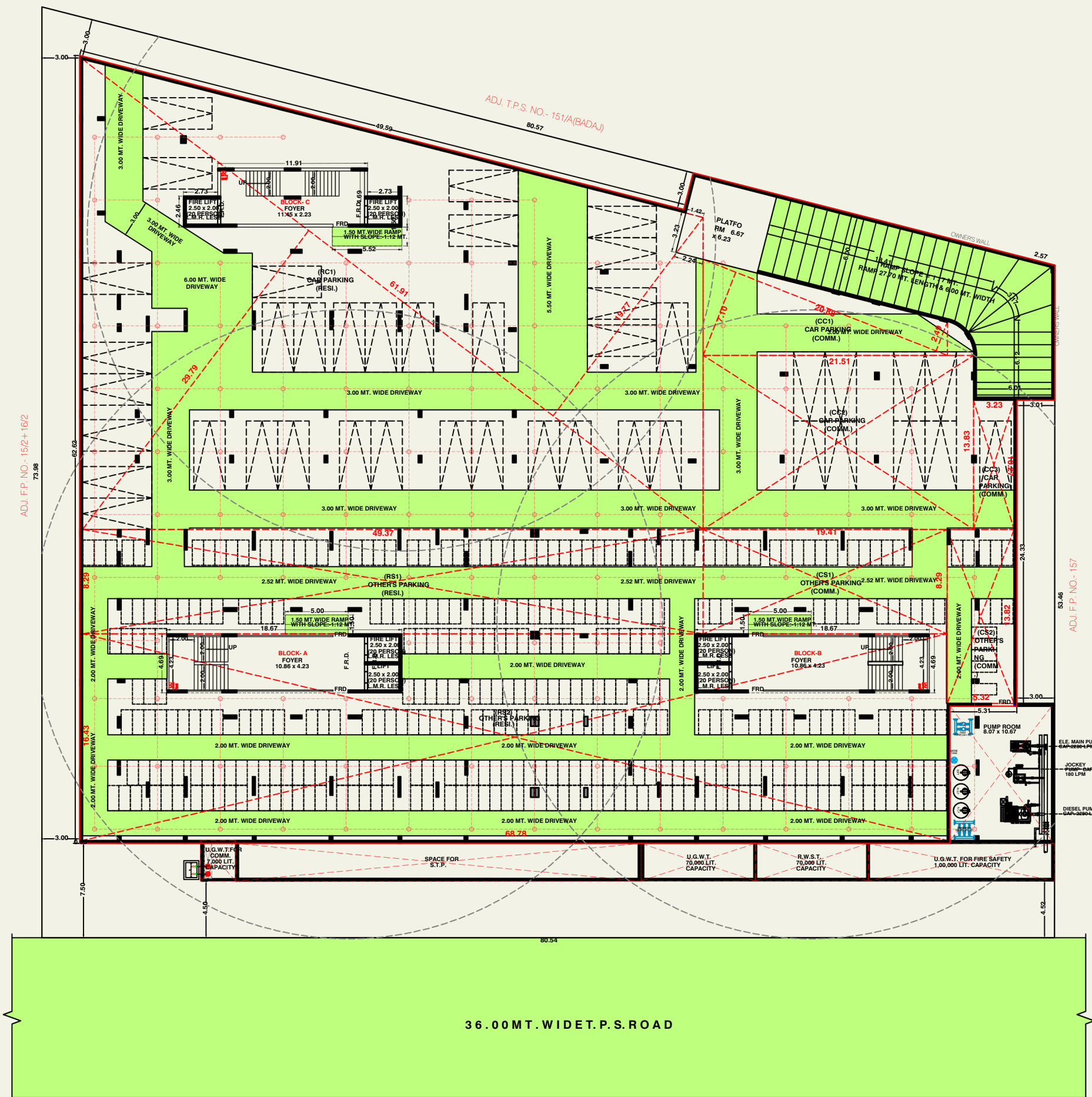


ADDOWN REALTY

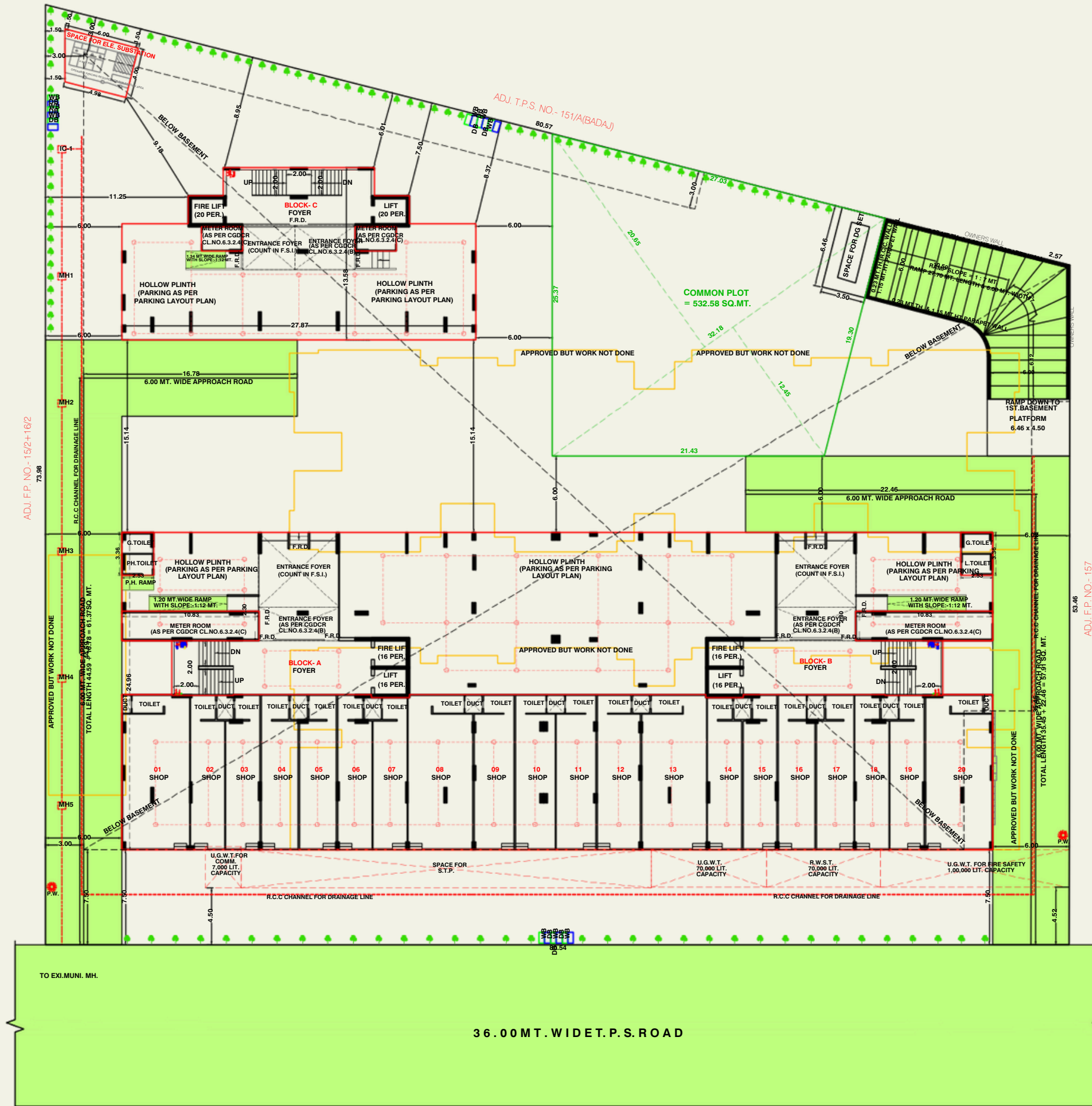
— Connecting You To Your Perfect Property —

Image is only for Representative Purpose

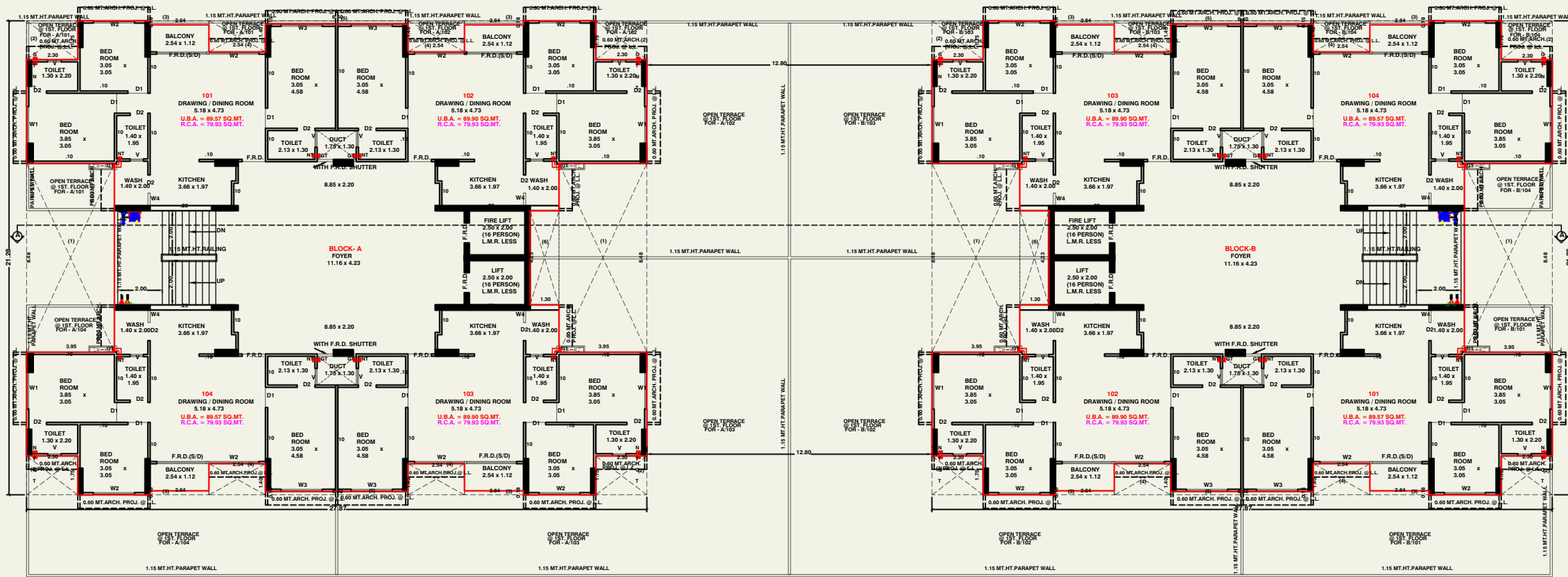




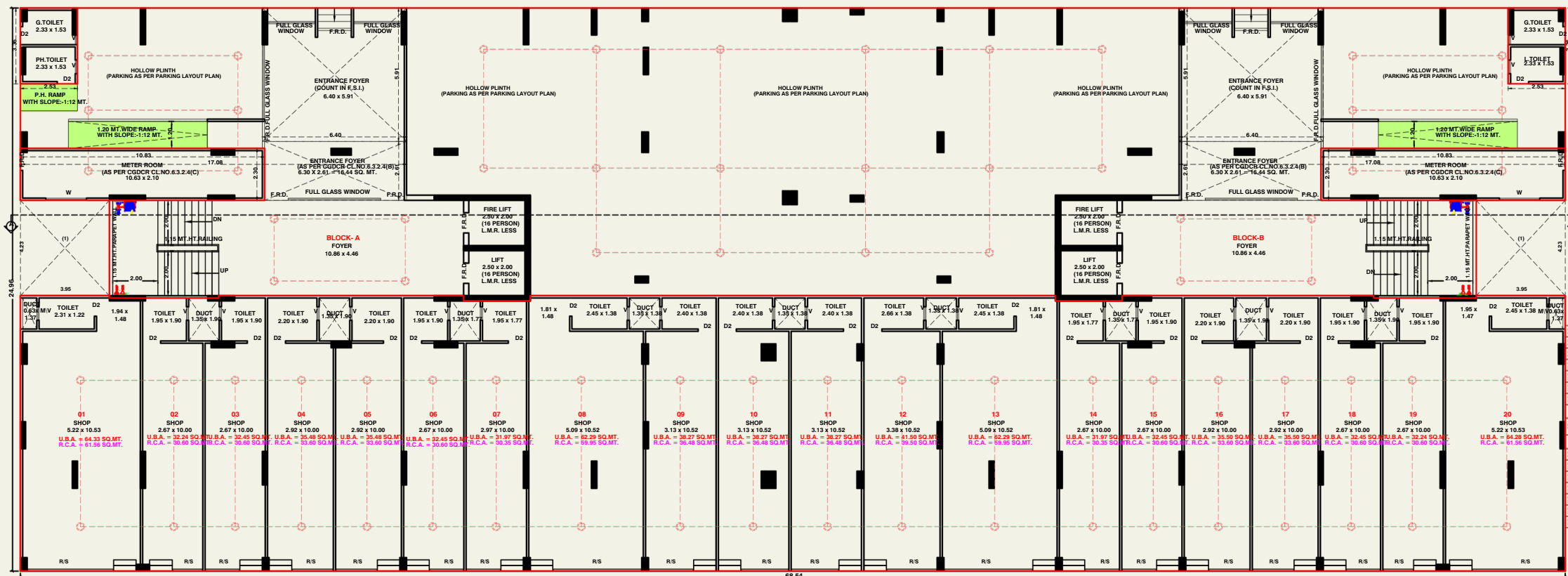
BASEMENT PLAN



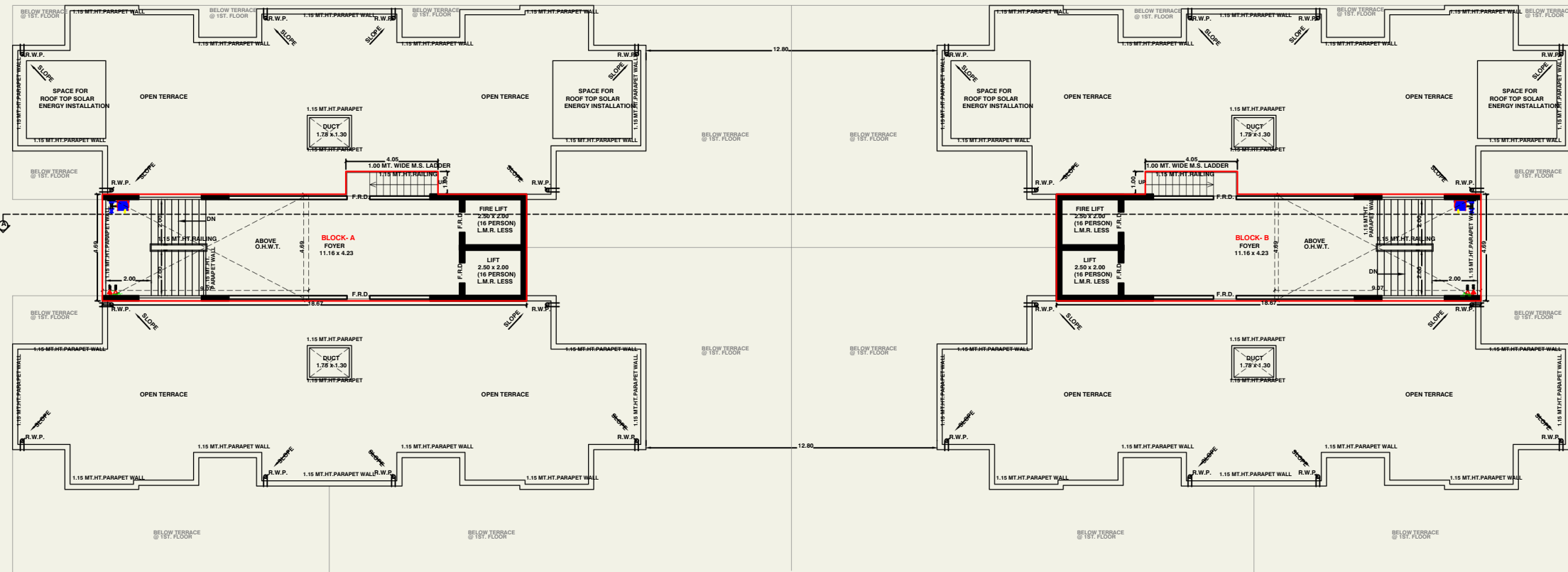
LAYOUT PLAN



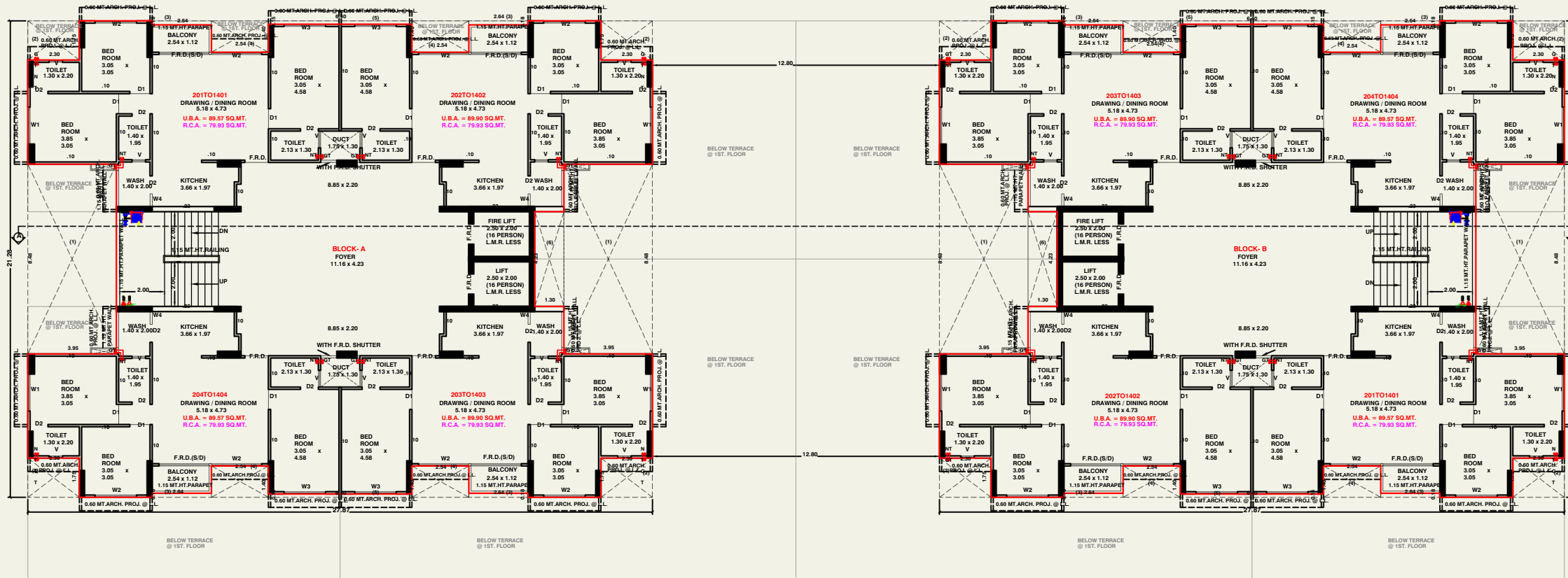
1ST. FLOOR PLAN (BLOCK - A+B)



GROUND FLOOR PLAN (BLOCK - A+B)



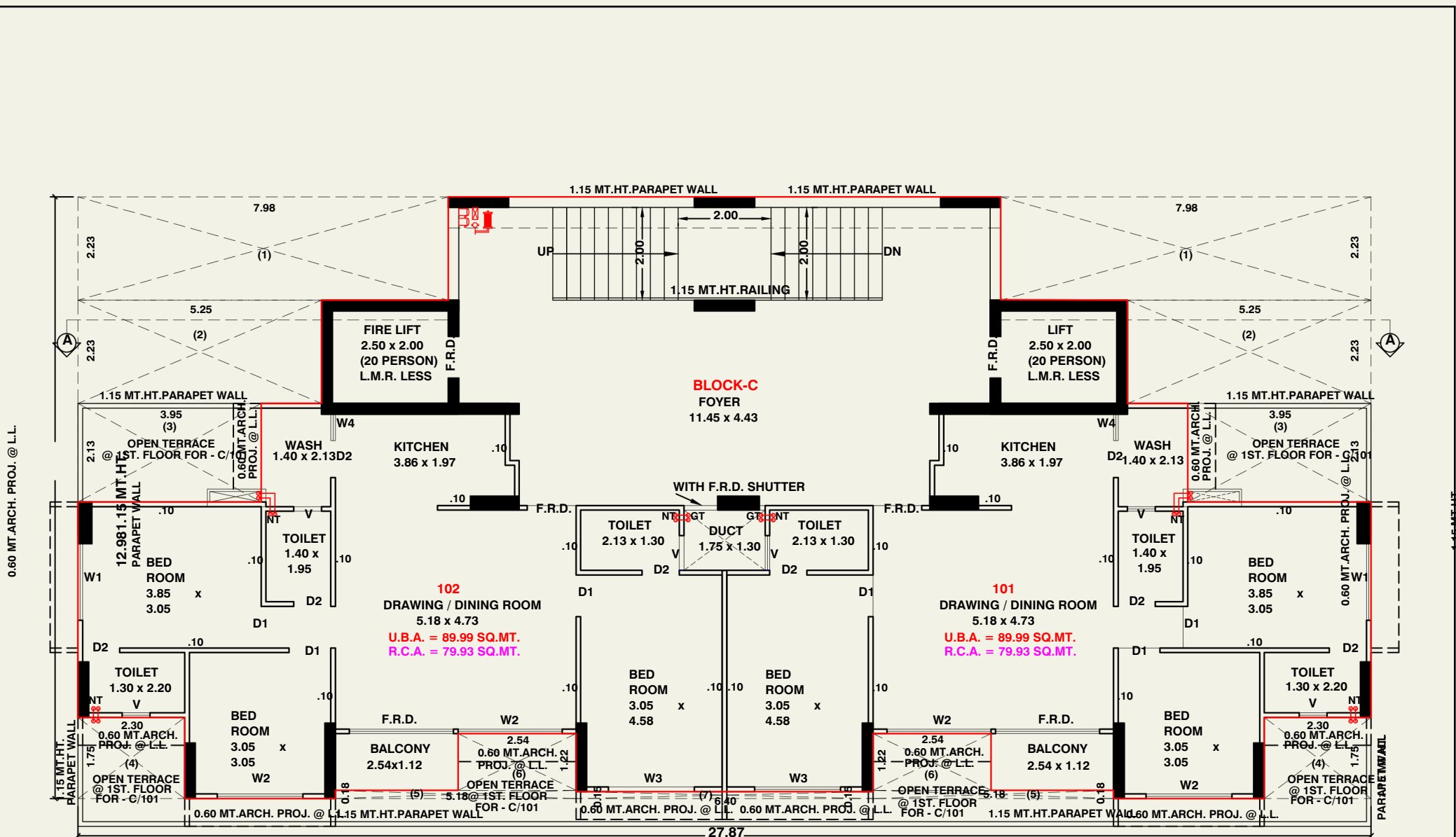
OPEN TERRACE PLAN WITH STAIR CABIN & O.H.W.T. PLAN (BLOCK - A+B)



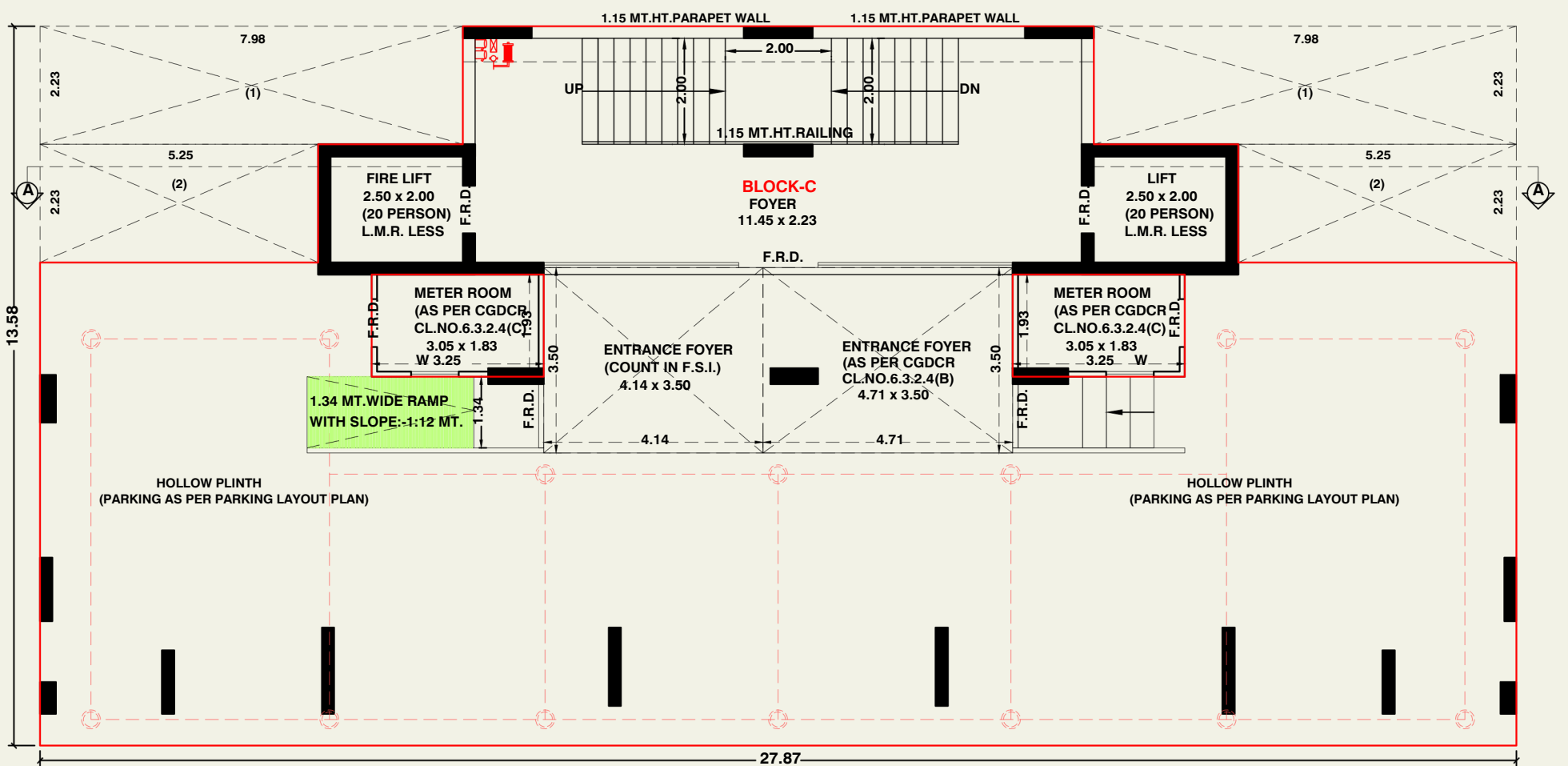
2ND. TO 14TH. FLOOR PLAN (BLOCK - A+B)



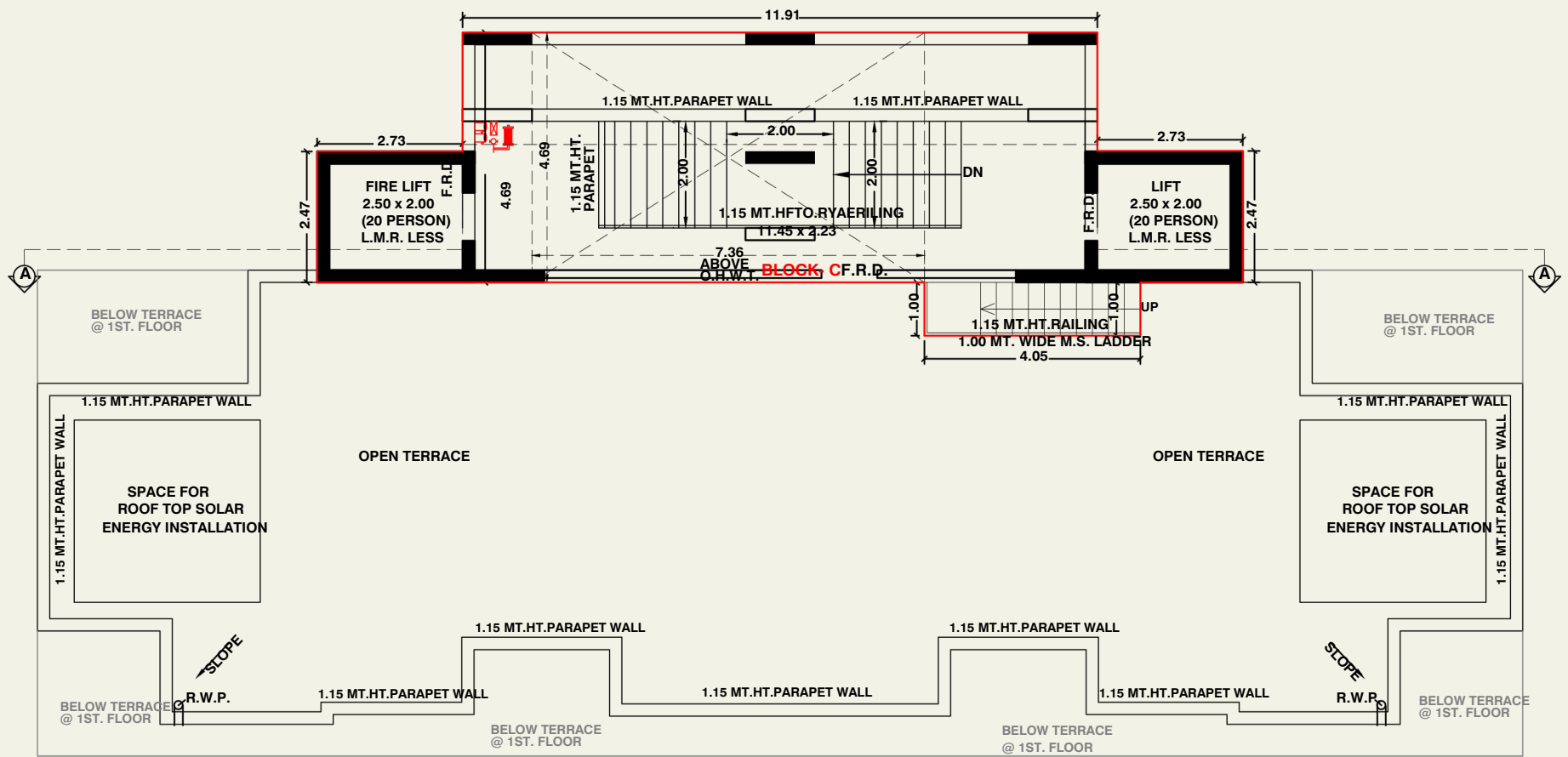
ELEVATION
ELEVATION (BLOCK - A+B)



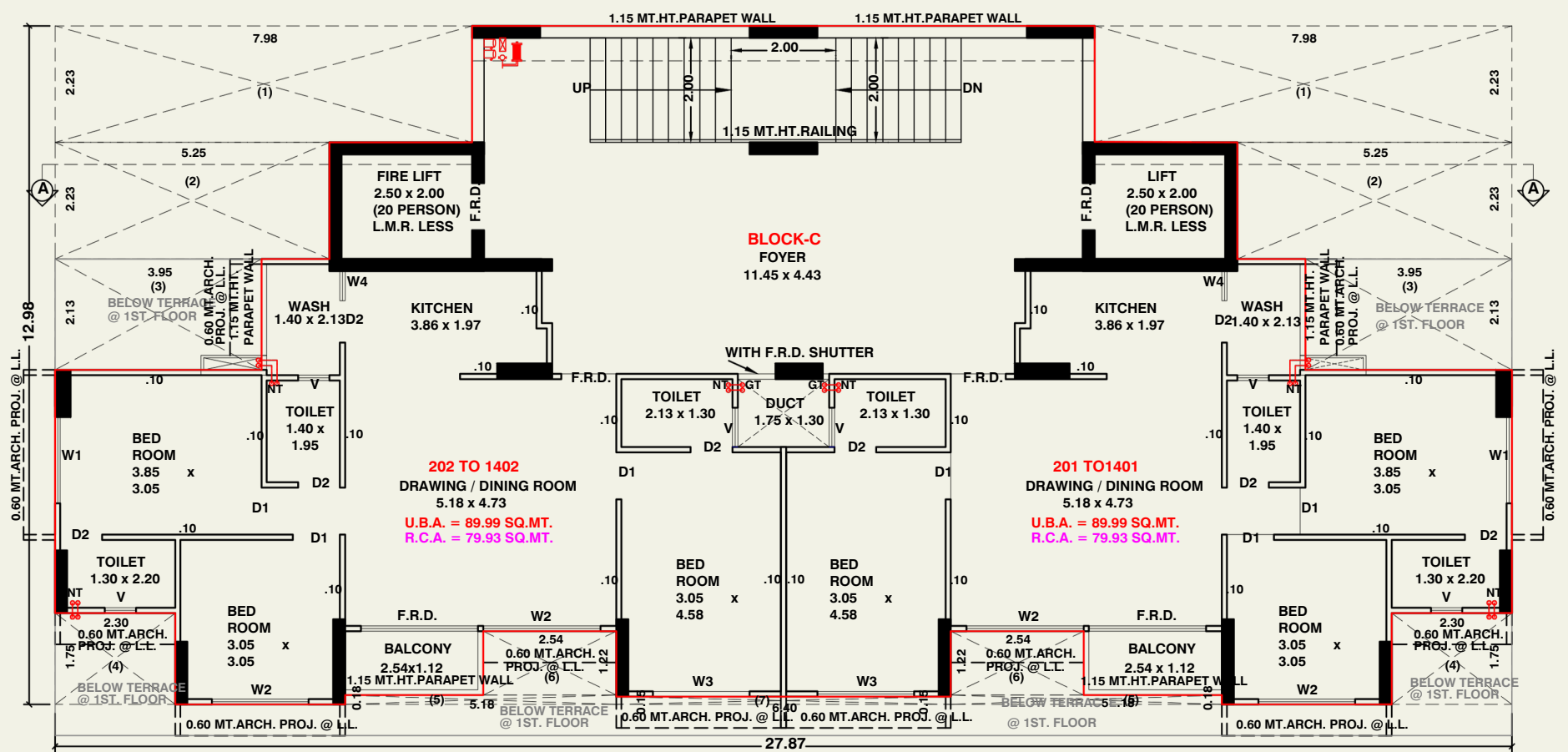
1ST. FLOOR PLAN (BLOCK - C)



GROUND FLOOR PLAN (BLOCK - C)

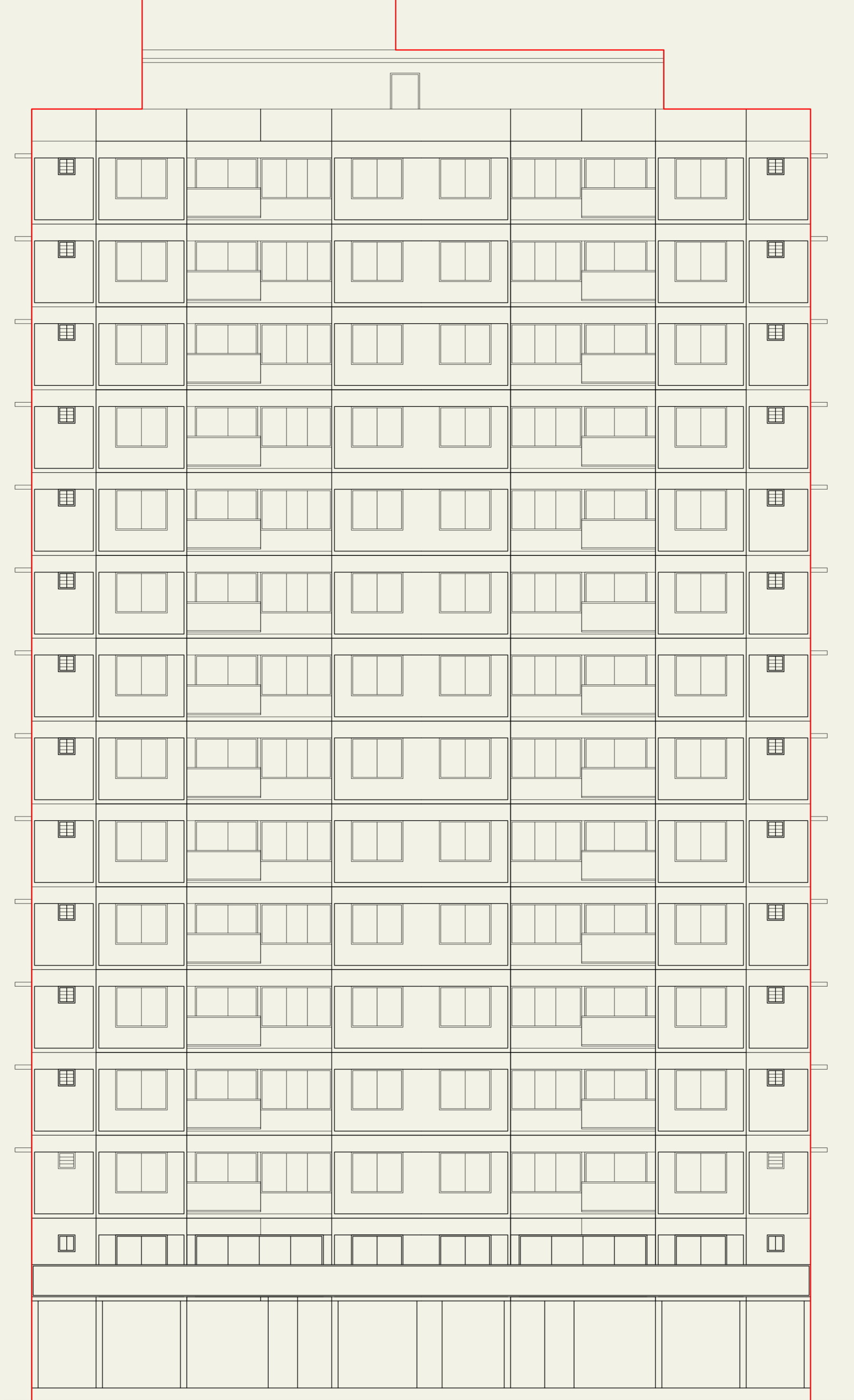


OPEN TERRACE PLAN WITH STAIR CABIN & O.H.W.T. PLAN (BLOCK - C)



2ND. TO 14TH. FLOOR PLAN (BLOCK - C)

LIGHTNING
ARRESTER



ELEVATION

ELEVATION (BLOCK - C)

Image is only for Representative Purpose



SPECIFICATIONS

Structure -

- Earthquake resistance R.C.C. frame structure with block masonry wall.

Wall Finish -

- Internal single coat plaster with white putty
- External double coat sand faced plaster with Acrylic paint

Kitchen -

- Granite top platform with S.S. Sink
- Dado upto lintel level

Flooring -

- Vitrified tiles
- China mosaic in terrace

Door and Windows -

- Decorative main door
- All doors are laminated flush door
- Aluminum section sliding windows

Toilet Plumbing -

- Glazed tiles on flooring
- Dado upto lintel level
- Concealed plumbing
- Sanitary ware & C.P. fittings

Electrification -

- ISI concealed copper with modular switches
- MCB with electric point

Elevators -

- Two elevators in each block