



ADDOWN REALTY

— Connecting You To Your Perfect Property —

3 BHK elite living

Where you find the sense of spaciousness and infinite happiness.
A contemporary tower with super spacious residence and wide balconies provided in each unit to give the residents a blissful experience.



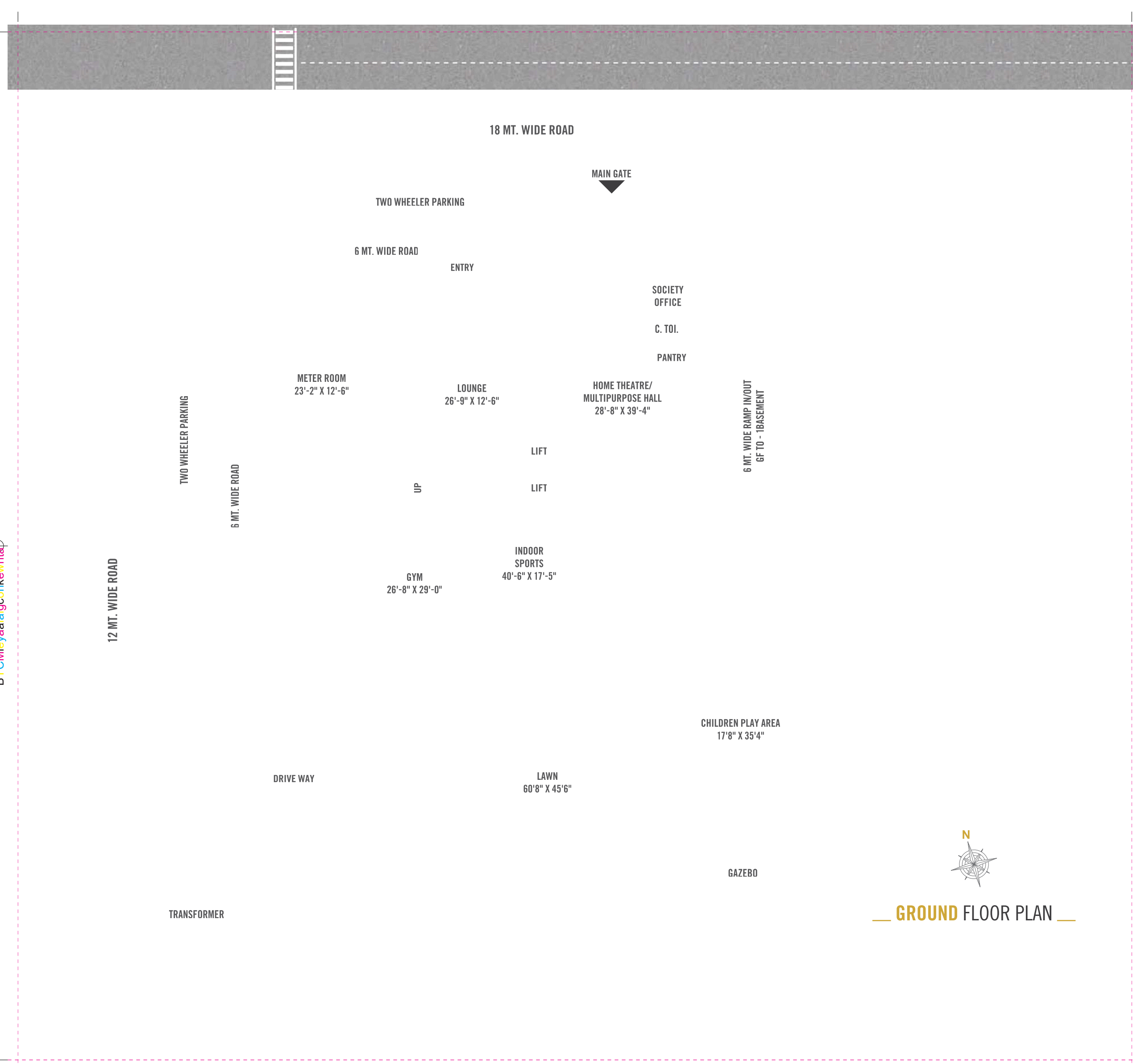
ARTISTIC IMAGES



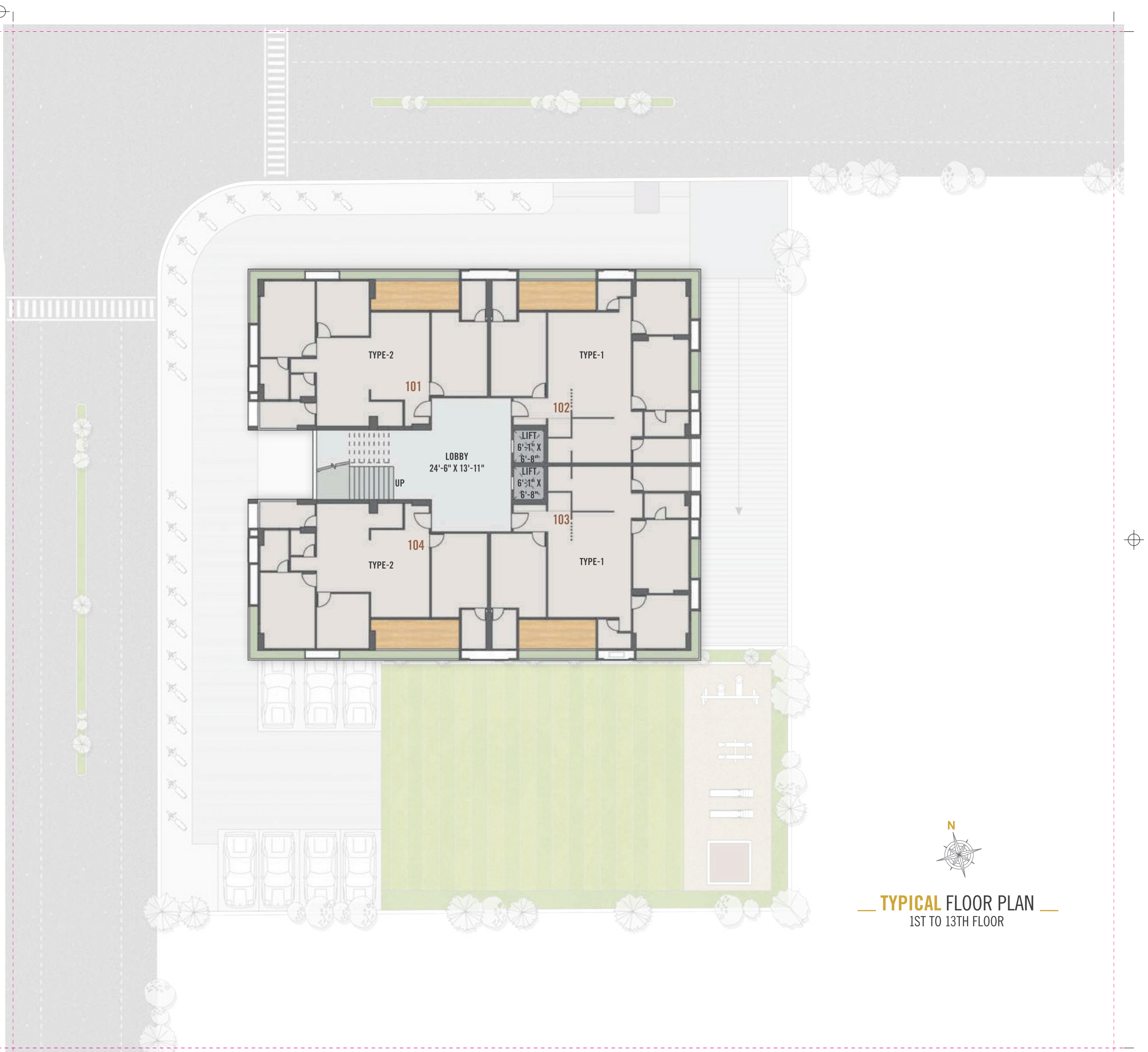
eternal balcony view

The sunshine, the energy, the atmosphere with thoughtfully planned Wide balconies provided in each unit to give the residents a blissful experience and help them connected to nature.





GROUND FLOOR PLAN



TYPICAL FLOOR PLAN
1ST TO 13TH FLOOR




14TH FLOOR PLAN

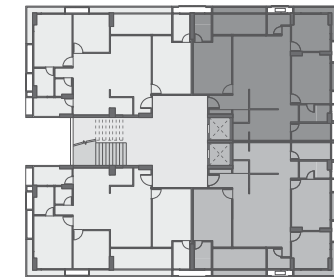


ARTISTIC IMAGES

HEAVEN IS UNDER OUR FEET
 as well as over our heads

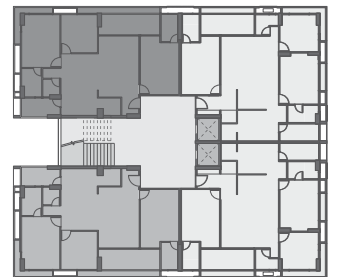
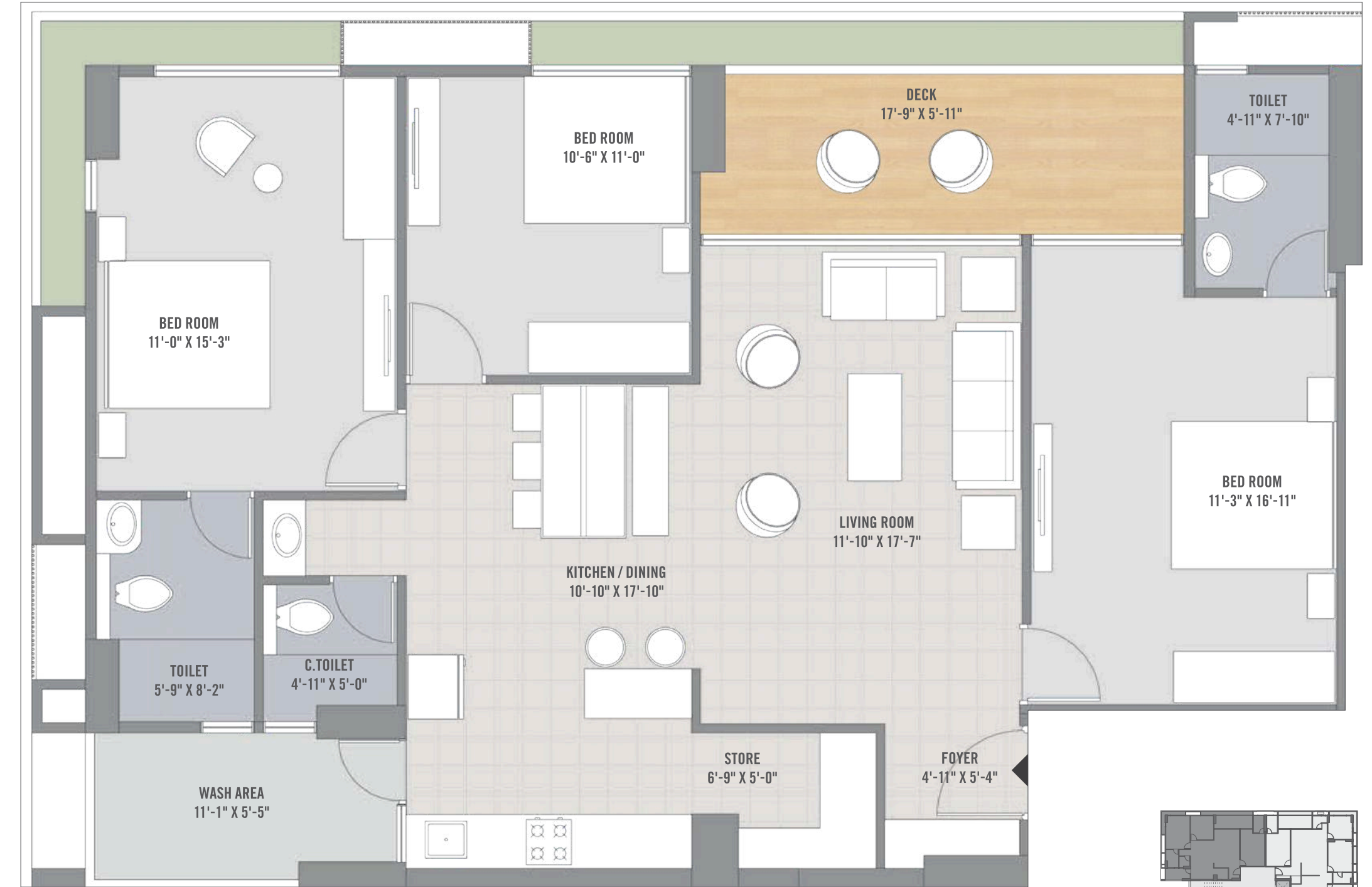
Status 55, This panoramic tower and its harmonious entrance has full of advantages
 beautiful look, green living, secure and safe premises

3 BHK UNIT PLAN



TYPE - 1

3 BHK UNIT PLAN



TYPE - 2



ARTISTIC IMAGES

- ENTRANCE FOYER
- CHILDREN PLAY AREA
- GAZEBO WITH GARDEN
- INDOOR GAMES
- GYM
- MULTIPURPOSE HALL & HOME THEATRE
- LIBRARY
- 2-HIGH SPEED ELEVATORS
- ALLOTTED CAR PARKING
- SECURITY CABIN
-  CCTV CAMERA
- FIRE SAFETY
- 24 X 7 WATER SUPPLY
- FIBER- OPTIC CONNECTION
- INTERCOM FACILITY WITH VDP



ARTISTIC IMAGES

sensational amenities

Conceptual and breathtaking natural surrounding, vast and splendid design, quality construction, ultra morden amenities and much more...



ARTISTIC IMAGES

OUR ON GOING PROJECTS



ASTHA GREENS, 3.5BHK BUNGLOWS
MAHEMDABAD



RADHE INFINITY
COMMERCIAL & RESIDENCE
RAKSHASHAKTI CIRCLE, GANDHINAGAR



SILVER LUXURIA, 4BHK DUPLEX
JAGATPUR

OUR ON COMPLETED PROJECTS



STATUS - 4BHK,
SCIENCE CITY, SOLA



SAMVED GREENVALLEY
(2-3 BHK PREMIUM LIVING)
SARGASAN GANDHINAGAR



ISHWARMAGNA - 3BHK APARTMENT,
MITHAKHALI, AHMEDABAD

SPECIFICATION



STRUCTURE

- **RCC** : Earthquake Resistant Frame Structure.
- **MASONRY** : ACC Blocks (external-125mm Thick, Internal-100mm Thick).
- **PLASTER** : Internal-Single Coat Mala Plaster / External Wall-double Coat Plaster, Textured Finished With Premium Quality Acrylic Paints.



FLOORING

- **LIVING / KITCHEN** : Vitrified Tiles (800mm X 800mm) of Exxaro / Vermora / Simpulo / Qutone or Equivalent.
- **BEDROOMS** : Vitrified Tiles (600mm X 600mm / 800mm X 800mm) of Exxaro / Vermora / Simpulo Qutone or Equivalent.
- **BALCONY** : Ceramic / rustic Tiles of Standard Quality.
- **BATHROOMS** : Anti-skid Ceramic Tiles of Standard Quality.



DOORS

- **MAIN DOOR** : Veneer or Laminated Flush Door.
- **INTERNAL DOOR** : Flush Door with Oil Paint.



WINDOWS

- **SLIDING WINDOWS** : Powder Coated Aluminum Sliding Windows Section of National / Jindal or Equivalent.
- **GLASS** : 4/5 mm Thk. Plain Glass of Saint Gobain / Modi / Indo Asahi.



COLOUR

- **INTERNAL** : Putty Finish (Birla White or Equivalent).
- **EXTERNAL** : 100% Acrylic Paint (Berger / ici / Asian / Nerolec or Equivalent).



ELECTRIFICATION

- **CONCEALED WIRING** : Polycab / Havells / Finolex / RR Cable or Equivalent.
- **MODULAR SWITCHES** : Schneider / Anchor / Havells / Panasonic / L & T or Equivalent.
- **MCB** : Schneider / Havells / Hager / Panasonic / L & T or Equivalent.
- **ELECTRICAL CONNECTION** : 5 KW Per Unit.



TOILETS

- **GLAZED / CERAMIC TILES** : Up to Beam Bottom of Standard Quality.
- **SANITARY WARES** : Kohler, Duravit, Jaquar, Cera, Hindware or Equivalent.
- **CP FITTINGS** : Kohler, Duravit, Jaquar, Cera, Hindware / Plumber or Equivalent.
- **PLUMBING PIPING** : Ashirvad / Astral / Supreme or Equivalent.



WATER PROOFING

- Brickbat Coba + Chemical Waterproofing in all Bathroom Sunk Slab.
- China Mosaic / Ceramic Tiles Waterproofing on Terrace.