



ADDOWN REALTY
— Connecting You To Your Perfect Property —



Where breeze and sunshine
are your forever companions

Bathed in sunlight's artistry,
breathe in fresh air's revitalizing
touch. Find enchantment in
radiant spaces, where positivity
dances.

Here's the breath of fresh AER that you deserve!

Welcome to AER, where we believe in giving you more than just a living space. Our apartments provide ample room for you to dream, explore, and manifest your desires. Discover the epitome of comfortable and airy living in our 3 and 2 BHK apartments. Experience a lifestyle where the gentle breeze and abundant natural light fill your home with a sense of tranquility.



KAVISHA AER



Club House

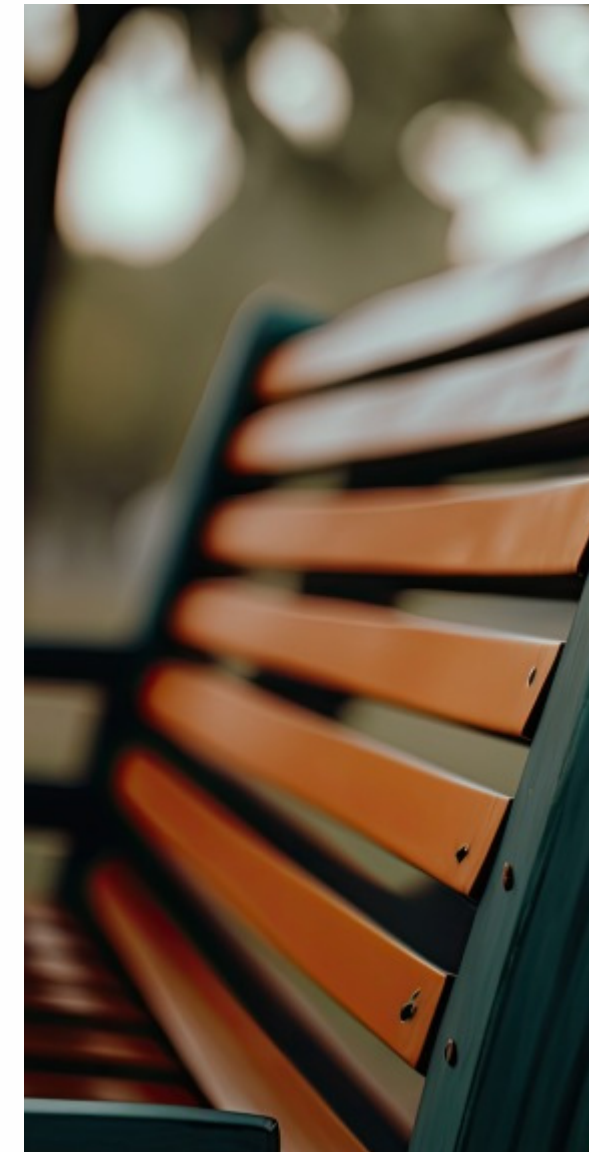
Indoor Games | Gym | Rooftop Café

An oasis of
exquisite pleasures

Step into the exquisite clubhouse, where luxury and leisure intertwine. Connect with fellow residents, host memorable gatherings, and unwind in the opulent surroundings. Here, every moment becomes a cherished memory. Indulge in a friendly game, workout in the gym or savour your favourite food at the rooftop café.



Dive into blissful
escapes



Escape into a world of bliss with AER'S shimmering swimming pool. Immerse yourself in the crystal-clear waters, enjoy leisurely swims, or simply bask in the sun-kissed ambience. Experience the perfect blend of relaxation and rejuvenation as you sit with your friends in the well-designed sit-outs enjoying the air and talking your hearts out.



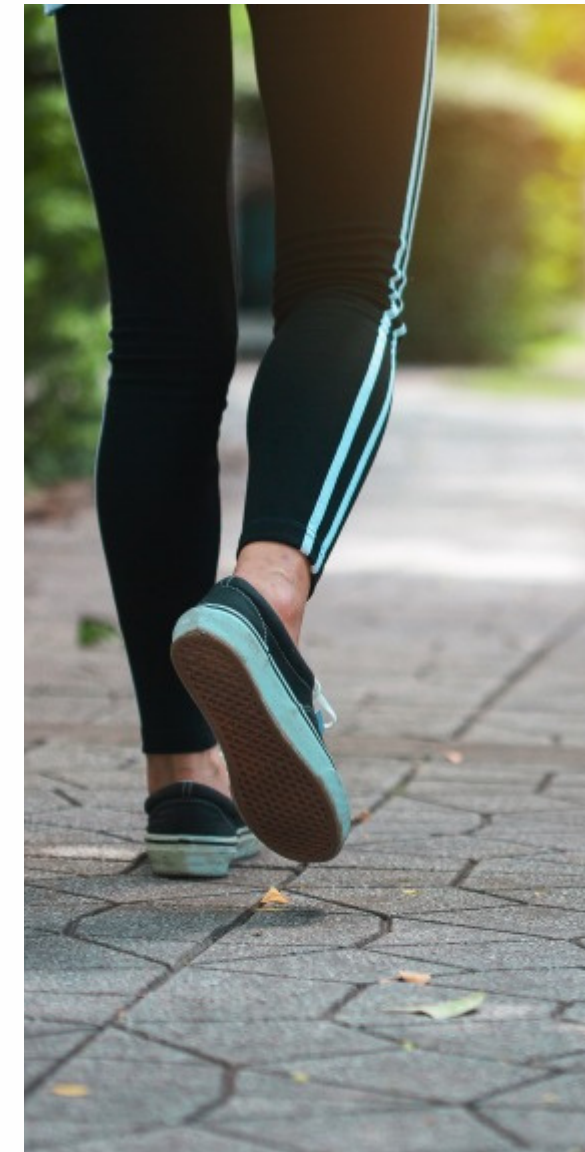
Step into the ultimate realm
of fun and excitement



Live consciously at Kavisha Aer. Bask in the brilliance of rooftop solar panels that power all the common amenities, adding sustainability and reducing maintenance costs. We're not just reducing carbon footprints; we're rewriting the narrative of modern living.



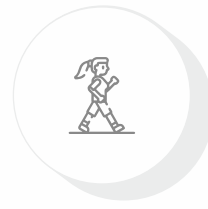
Leisurely stroll in
our landscaped gardens



Immerse yourself in the serene ambience of our meticulously crafted landscaped gardens. Take leisurely strolls picturesque surroundings, allowing nature's tranquility to rejuvenate your mind, body, and soul.



**Terrace
Café**



**Walking
Track**



**Landscape
Area**



**Swimming
Pool**



**Senior Citizen
Sit-out**



Gym



**Children
Play Area**



**Club
House**



**Badminton
Court**



**Indoor
Games**



**Multi-Purpose
Court**



**Mother's
Sit-out**

Unveil a world of luxurious delights

Indulge in a haven of opulence where every desire finds fulfilment. Immerse yourself in a realm of unmatched amenities designed to pamper your senses and elevate your lifestyle. Indulge in the pleasures that await and unlock a life of unrivalled luxury and fulfilment.



GROUND FLOOR



Amenities Legend

1. Planter
2. Tree Pits
3. Parking Area
4. Entrance Area Ramp
5. Entrance Theme Wall With Signage & Theme Planting
6. Security Cabin
7. Avenue Planting
8. Driveway
9. Sit Out
10. Electrical Substation
11. Jogging/walking Track
12. Central Arrival Plaza
13. Senior Citizen's Sit Out
14. Outdoor Activity Area
15. Elemental Raised Circular Planters
16. Central Lawn Area
17. Infinity Swimming Pool
18. Kids Pool
19. Pool Deck With Benches
20. Club House
21. Indoor Games
22. Lounge
23. Changing Rooms
24. Mother's Sit Out Court
25. Outdoor Sit Out
26. Children's Play Area
27. Badminton Court
28. Kids Play Court
29. Multipurpose Play Court
30. Gymnasium
31. Shower Area
32. Waiting / Seating Area
33. Open Roof Top Café
34. Terrace Lounge
35. Pantry

18.00 MT. WIDE ROAD

18.00 MT. WIDE ROAD

EXIT

ENTRY



FIRST FLOOR

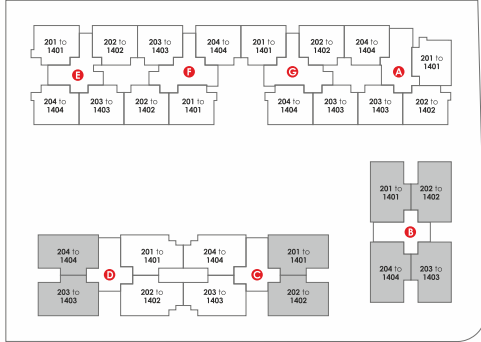
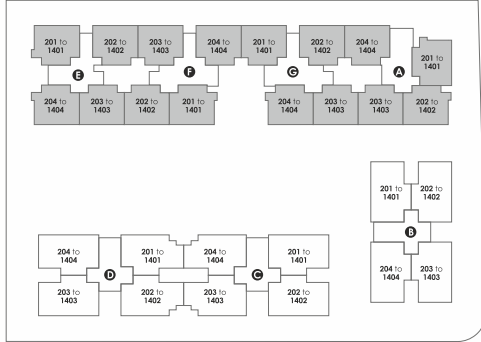


18.00 MT. WIDE ROAD

18.00 MT. WIDE ROAD







2 BED | HALL | KITCHEN

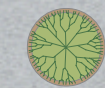
3 BED | HALL | KITCHEN

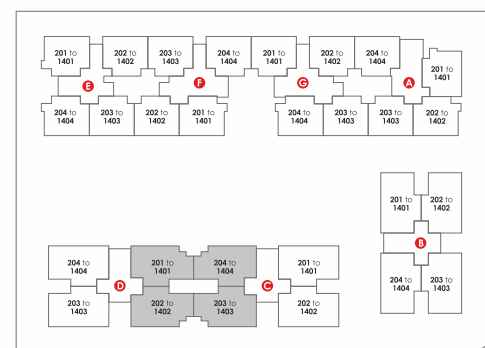
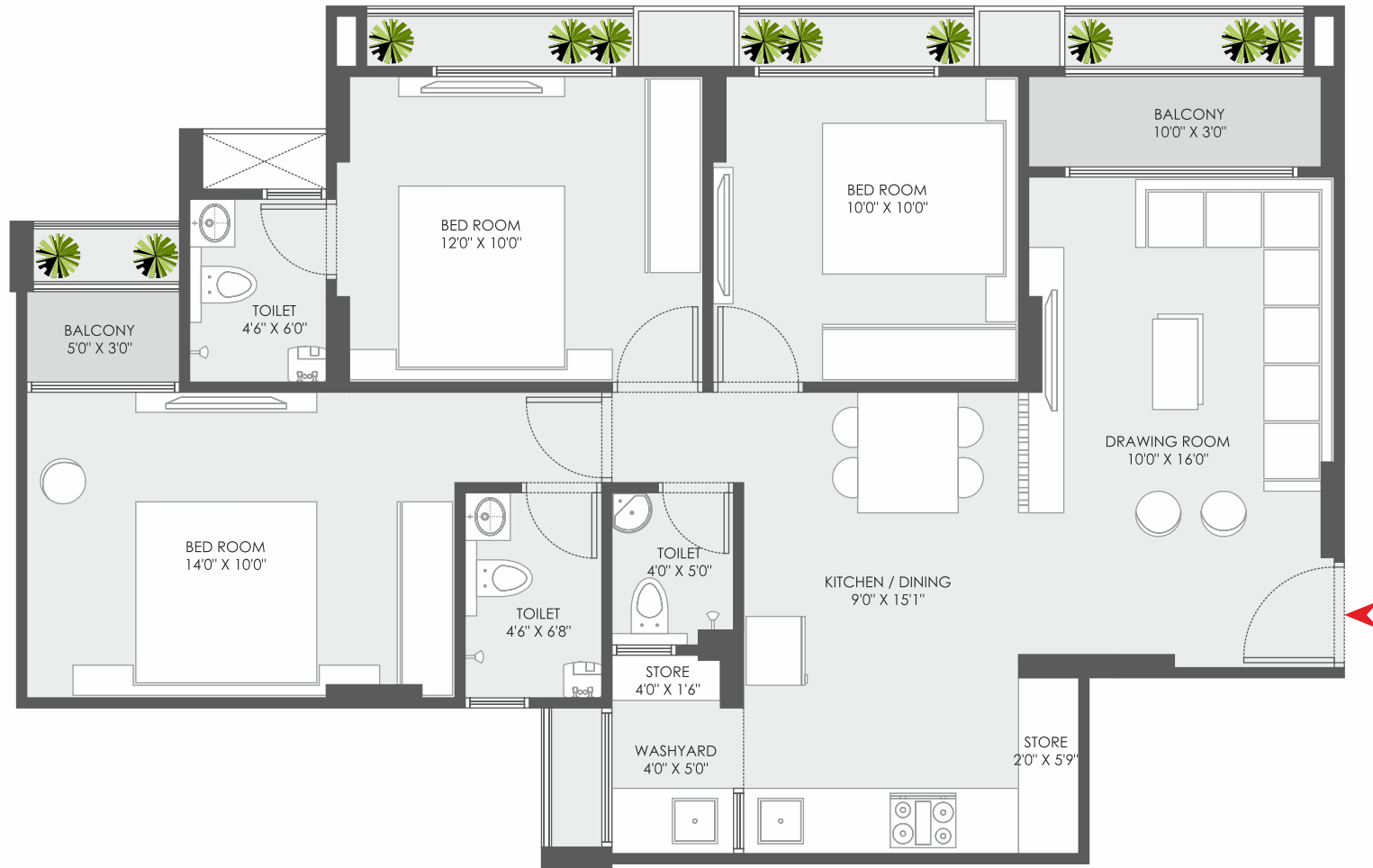
TYPICAL FLOOR



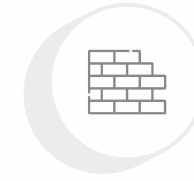
18.00 MT. WIDE ROAD

18.00 MT. WIDE ROAD

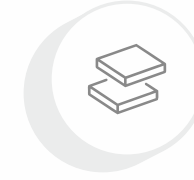




STANDARD SPECIFICATION



- wall finish**
- internal smooth finish mala plaster with putty.
 - external : double coat sand faced plaster or texture finish.



- flooring**
- vitrified tiles flooring in all rooms.



- kitchen**
- standing polished natural granite kitchen.
 - platform with sink & glazed tiles dado above the platform up to lintel level.



- doors**
- decorative main door having lock of reputed company.
 - internal flush doors with colour.



- windows**
- aluminum anodized section sliding windows with glass & stone jambs.



- toilet**
- ceramic tiles flooring in all toilets, glazed tiles dado up to lintel level.



- plumbing**
- concealed plumbing of good quality UPVC & CPVC pipes, C.P. fittings & sanitary ware of reputed brands.



- electrification**
- single phase meter + mcb & elcb tripper with concealed wiring with adequate points with quality fittings.



- paint**
- exterior painting of acrylic paint, internal walls double coat putty finish.



- lifts**
- fine quality fully automatic lifts.